

January 20, 2005

05-051

Adoption of Legislative Priorities for 2005

PREPARED BY: Dr. Preston Pulliams, District President

APPROVED BY: Dr. Preston Pulliams, District President

REPORT: Board policy B 102 requires the Board to consider and approve priorities prior to each legislative session. The Board considered and approved the priorities recommended by the Oregon Community College Association at their October meeting. When meeting with the Portland Community College legislative delegation, the Board will want to discuss those priorities which are of primary importance to PCC, rather than the entire list of OCCA issues. These are:

- Maintaining and improving access for community college students
- Increasing funding for the state community college support fund beyond the level included in the Governor's recommended budget
- Extending eligibility for Oregon Opportunity Grants to part-time students
- Maintaining local college board authority over budget and program decisions
- Avoiding state mandates that place restrictions or requirements on local colleges without funding to support these mandates.

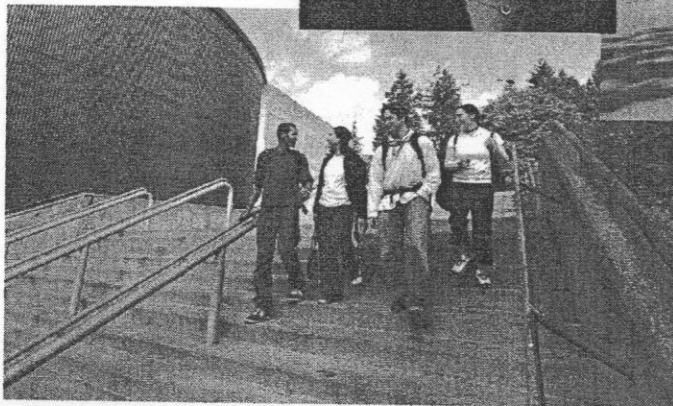
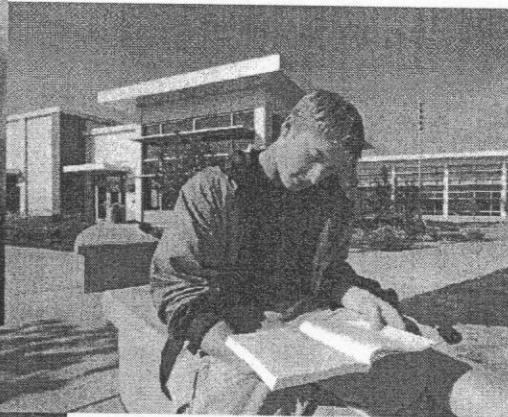
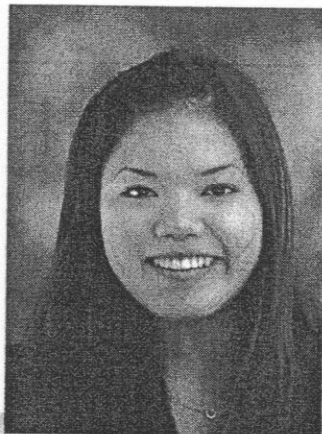
RECOMMENDATION: That the board adopt the priorities listed above.

Director McKinney moved to approve Resolution 05-051 and is passed unanimously.

Portland Community College: 2005 Legislative Priorities

Keeping the Doors of Opportunity Open

- Maintain and improve access for students.
- Increase funding for the community college support fund beyond the level included in the Governor's recommended budget.
- Extend eligibility for Oregon Opportunity Grants to part-time students to provide maximum access for community college students to state financial aid and opportunity grants.
- Continue local college board authority to set tuition rates and establish partnerships with other educational entities to smooth transfer and transition between the various segments of education.
- Avoid state mandates that place restrictions and requirements on local colleges without funding to support these mandates.



**Portland
Community
College**

www.pcc.edu

A Letter to Our Legislators

The PCC Board of Directors and I look forward to working with you during the 2005 legislative session on issues of vital concern to our community. Our top priority is to ensure that residents of the Portland Community College district have access to quality higher education and job training programs.

Investing in community colleges makes good economic sense for Oregon. Every dollar you invest creates opportunities in career and job training programs that put people to work.

Your investment also creates opportunities for people to have access to higher education – a necessity for all working Oregonians these days. And, investing in community colleges provides a pathway for under prepared adults and immigrants to boost their skills and prepare for living-wage jobs.

With adequate resources, community colleges are ready, willing and able to help ensure that Oregon has a well-educated, highly skilled and resilient workforce.

Sincerely,

Preston Pulliams
Preston Pulliams
District President

Dana Anderson
Dana Anderson
Board Chair



*Portland Community College Board of Directors:
Standing, left-to-right: Harold Williams, Karen McKinney, Preston Pulliams
(District President), Jaime Lim, Doreen Margolin. Seated: Dana Anderson,
Bob Palmer, Norma Jean Germond.*

Board of Directors, Portland Community College:

Norma Jean Germond, Zone 1; Harold C. Williams, Zone 2; Robert Palmer, Zone 3; Dana Anderson, Zone 4;
Doreen Margolin, Zone 5; Jaime Lim, Zone 6; Karen McKinney, Zone 7

Improving Access for Students

The Governor's recommended 2005-07 budget level for community colleges is a 5.5 percent decrease from 2003-05 and the lowest level since 1999.

1999-2001 CCSF	\$408 million
2001-2003 CCSF	\$440 million
2003-2005 CCSF	\$410 million
2005-2007 Gov's Rec.	\$388 million

The Governor's recommended budget level would result in a loss of **\$2.5 million to PCC for each of the next two years, or a \$5 million reduction in state funds for the biennium. This will result in 5,400 fewer students being served, on top of the 20,000 students who were shut out in the previous biennium.**

PCC has already **cut 35 academic programs and eliminated 44 faculty and staff positions.** More program reductions will further erode opportunities for students to access PCC programs. **Tuition increased 28 percent from 2002 to 2004.**

This tuition increase has made it more difficult for middle- and low-income students to take as many credits as they may otherwise have wanted to, and may have priced college completely out of reach for many students.

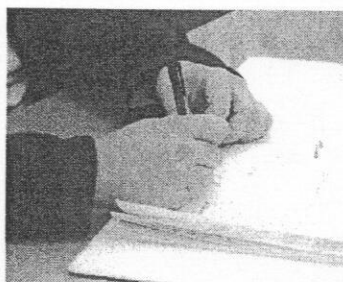
In the past two years alone, state funding for Oregon community colleges has decreased by \$51.3 million.

Oregon community colleges have the highest tuition in the 15 western states. This high tuition, coupled with low student financial aid, has helped create a dramatic decline in head-count and FTE enrollment.

If PCC adopts the average expected statewide tuition increase of 6 percent to help balance the 2005-07 budget, it would bring tuition rates to **\$70 per credit by the middle of the biennium, meaning that a full-time student's yearly tuition would be \$3150 (without fees, books and other expenses).**

If additional resources become available for community colleges, PCC will:

- Increase student financial aid funds
- Reduce tuition generally or offset planned future increases
- Add sections of for-credit instruction
- Enhance ongoing student services



For more information about Portland Community College:

Preston Pulliams, District President

503-977-4365
ppulliam@pcc.edu

Randy McEwen, Vice President

503-977-4334
rmcewen@pcc.edu

Jan Coulton, Legislative Representative

503-577-5889
jcoulton@comcast.net

**David Goldberg, Director of Institutional
Advancement**

503-977-4374
dgoldber@pcc.edu

Campus Presidents:

Algie Gatewood, Cascade

503-978-5302
agatewoo@pcc.edu

Nan Poppe, Extended Learning Campus

503-788-6268
npoppe@pcc.edu

Bill Christopher, Rock Creek

503-614-7305
bchristo@pcc.edu

Paul Hill, Sylvania

503-977-4357
phill@pcc.edu

www.pcc.edu

