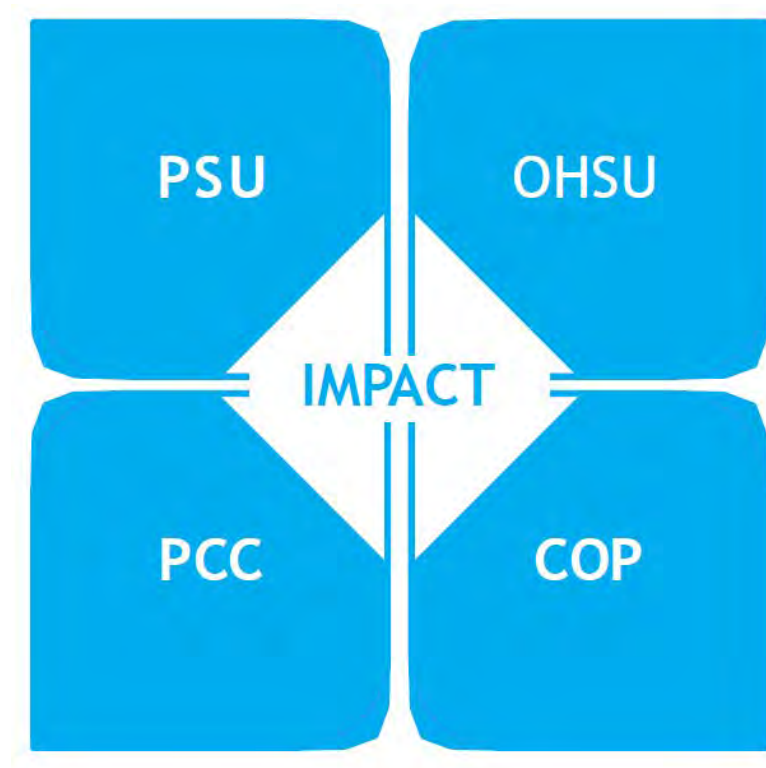


# PCC Dental Program Fourth and Montgomery

# Overview

- Health Professions planning since 2013
- Multiple site options considered
- Funding from 2008 Bond Program
- Total project cost: \$20.9M with \$8M from State/CCWD
- Downtown provides better transit options for clients

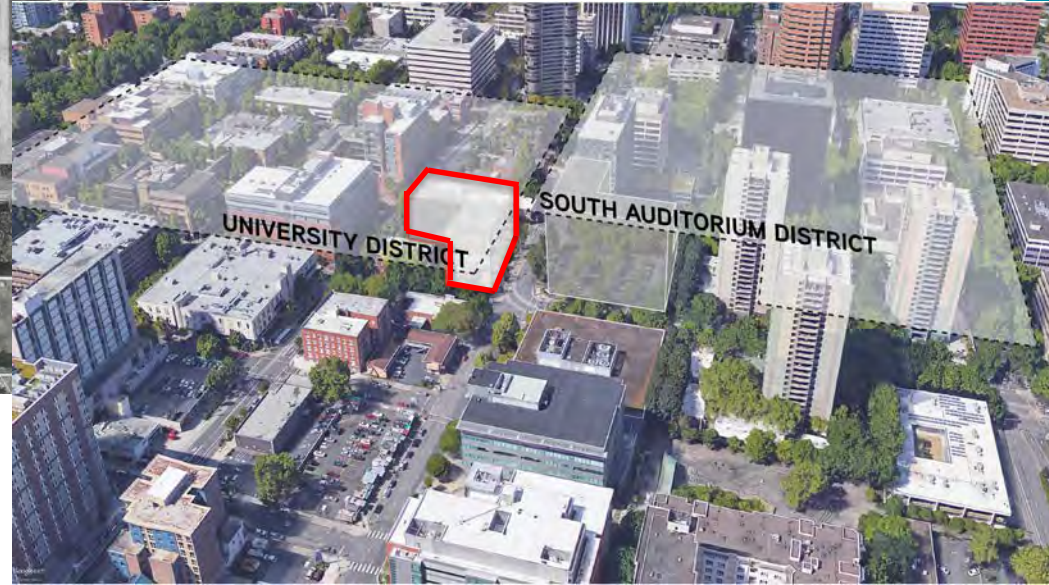
# Project Mission



## 4<sup>th</sup> & Montgomery Guiding Principles

1. Building Community and Inspiring Partnerships
2. Elevating Civic Pride
3. Supporting Varied & Innovative Work, Teaching, & Learning Styles
4. Enhancing Collaboration
5. Optimizing our Workplace
6. Reflecting our Values and Resources
7. Promoting Health and Wellness
8. Welcoming, Inviting, and Safe

# Building Location



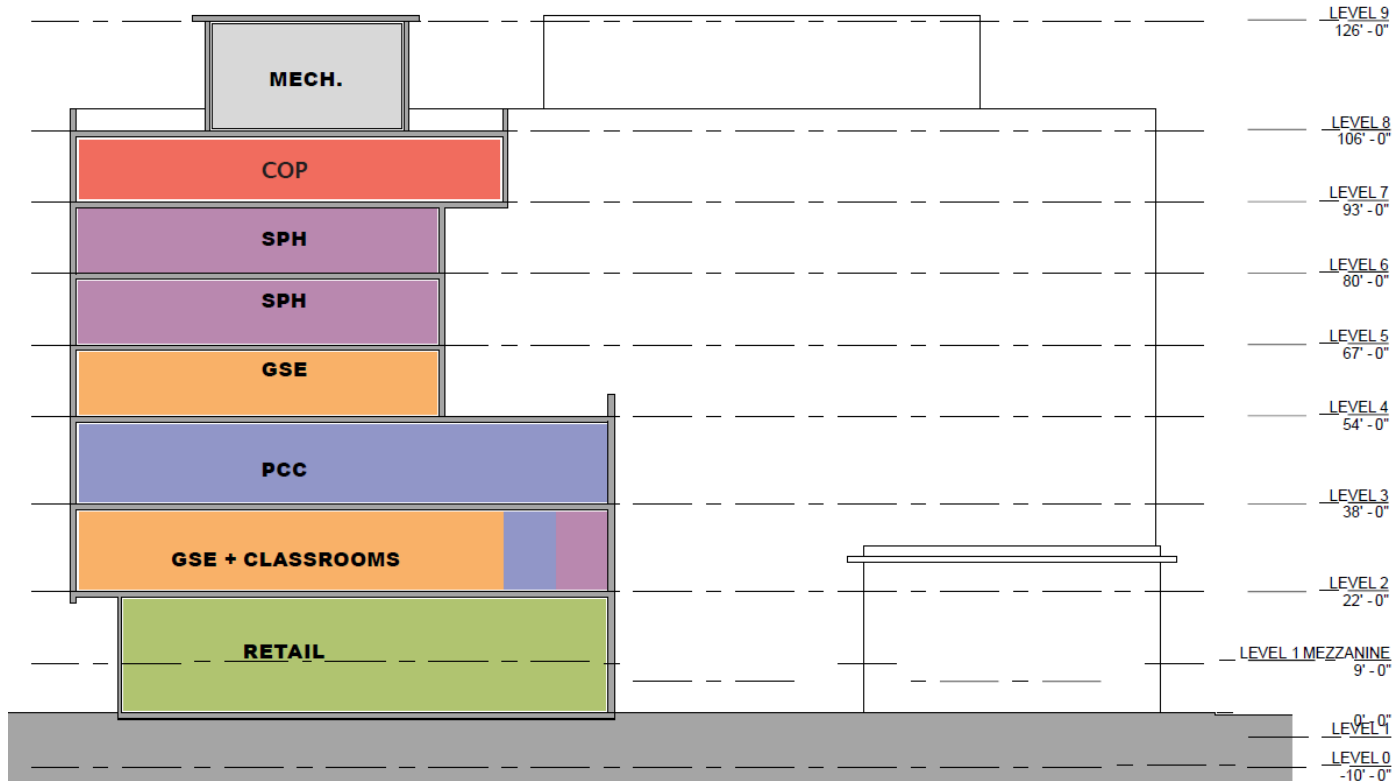
NW Corner – 5<sup>th</sup> & Montgomery



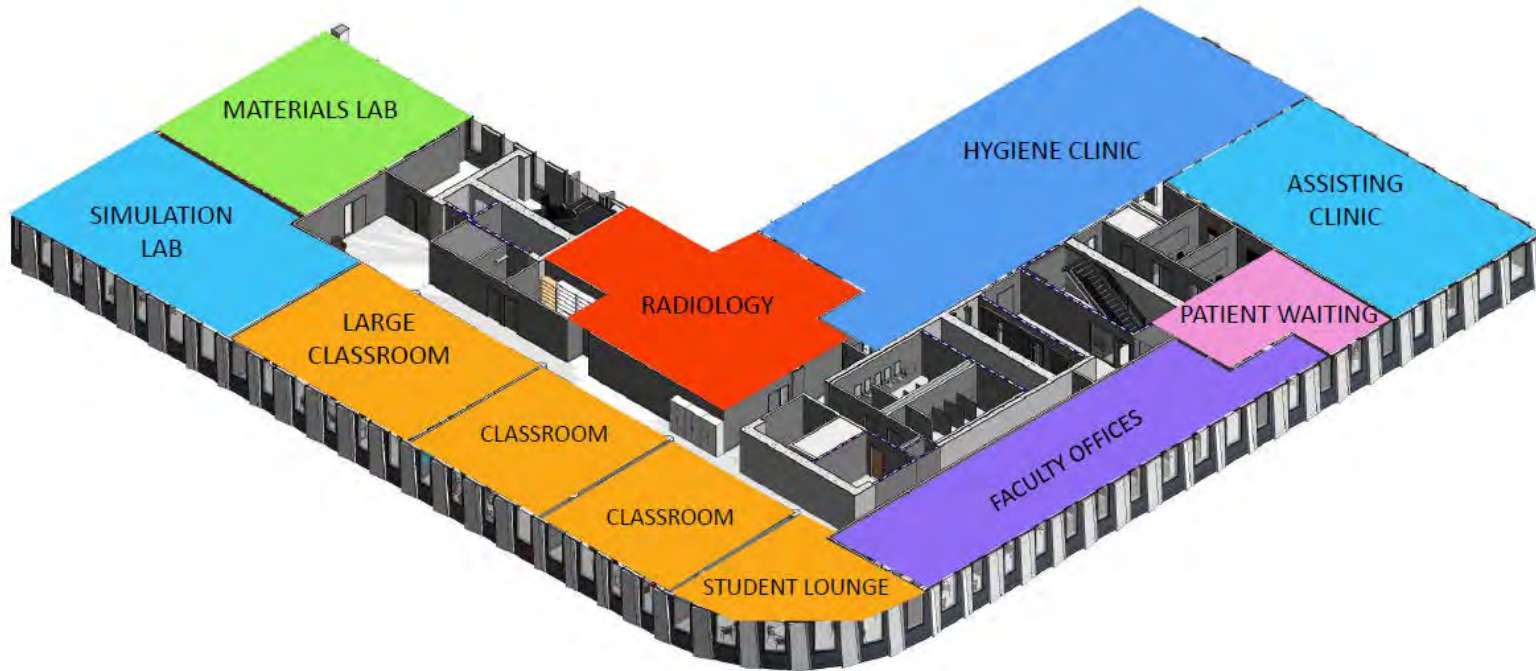
NE Corner – 4<sup>th</sup> & Montgomery



# 4<sup>th</sup> & Montgomery – Building Stacking



# PCC Dental Program – 3<sup>rd</sup> Floor



# SRG Design Team MWDESB + Workforce Diversity

## Current:

- 19.6% MWDESB of Total Contracted Design Phase Services

## MWDESB Participation:

- 74% Woman-Owned Business Enterprise
- 3% Minority-Owned Business Enterprise
- 23% Emerging Small Business

## Goal:

- 20% MWDESB of SRG Negotiated Contracts

# Andersen Construction Team MWDESB + Workforce Diversity

## Projected:

- 23% MWDESB of Andersen Projected Contracts

## MWDESB Participation:

- 19% Woman-Owned Business Enterprise
- 44% Minority-Owned Business Enterprise
- 10% Emerging Small Business
- 27% *Committed but not Categorized*

## Goal:

- 20% MWDESB of Andersen Contracts

# Schedule Milestones

## **Permit Package – Main Building Permit:**

- 11/9/2018 – 95% CDs
- 12/19/2018 – Final CDs

## **Construction:**

- 12/2/2018 – Construction Start
- 10/31/2020 – Construction Finish

## **Occupancy:**

- January 2021 – Winter Term