

FACILITIES PLANNING



Progressive Thinking, Integrated Planning

Portland Community College is Oregon's number one gateway to higher education and lifelong learning. As the region's largest post-secondary institution, PCC serves some 80,000 learners a year across a 1,500-square-mile district. Integrated planning activities across the college help ensure that long-term decision-making is strategic, inclusive and mission-focused. These efforts reflect a larger intention at PCC to create a culture of planning and innovation.

A number of integrated projects are currently under way as part of long-term planning efforts:



Strategic Planning

In 2015, PCC published a strategic vision that has become the college's overall map for ongoing planning and strategic actions.

<https://www.pcc.edu/about/administration/strategic-plan/affordable/>



Integrated
Planning



Facilities Planning

This process launched in fall 2016 to provide a comprehensive framework for assessing PCC's built environment and linking future capital and maintenance needs with strategic goals. The resulting plan will inform accreditation reporting as well as future infrastructure investment.



Academic and Student Affairs Planning

This broad-based, collaborative effort will provide an ongoing process for understanding current and future strengths and needs. The resulting roadmap will ensure continuous improvement of academic programs and services in support of PCC's mission and strategic plan.



IT Planning

This process launched in fall 2016 to provide an institutional blueprint of strategic technology projects that will align to PCC's core strategies as well as to key college-wide planning efforts. The action plan will focus on a 3-5 year timeframe with the goal of driving IT infrastructure, data, applications and processes to best-in-class status for educational technology.

NEED FOR FACILITIES PLANNING

- President's Work Plan – Bridge to 2020
- 2015 Accreditation Report
- Strategic Plan Themes:
 - Ignite a culture of innovation
 - Create a nationally renowned culture for diversity, equity and inclusion

FACILITIES PLANNING

A Phased Approach

Phase 1: An existing conditions assessment

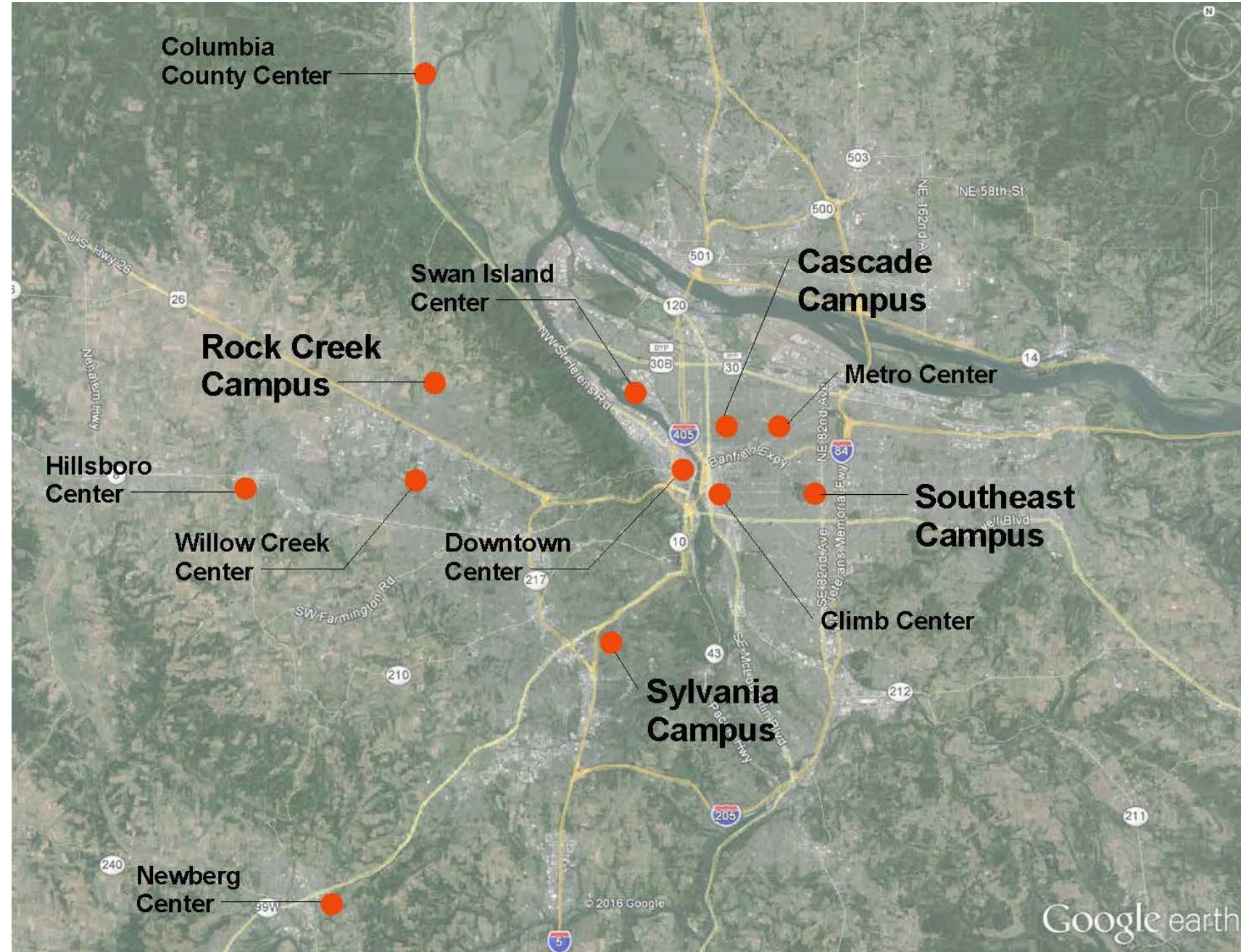
Phase 2: A vision for future college growth



Phase I: Existing Conditions

Existing Conditions

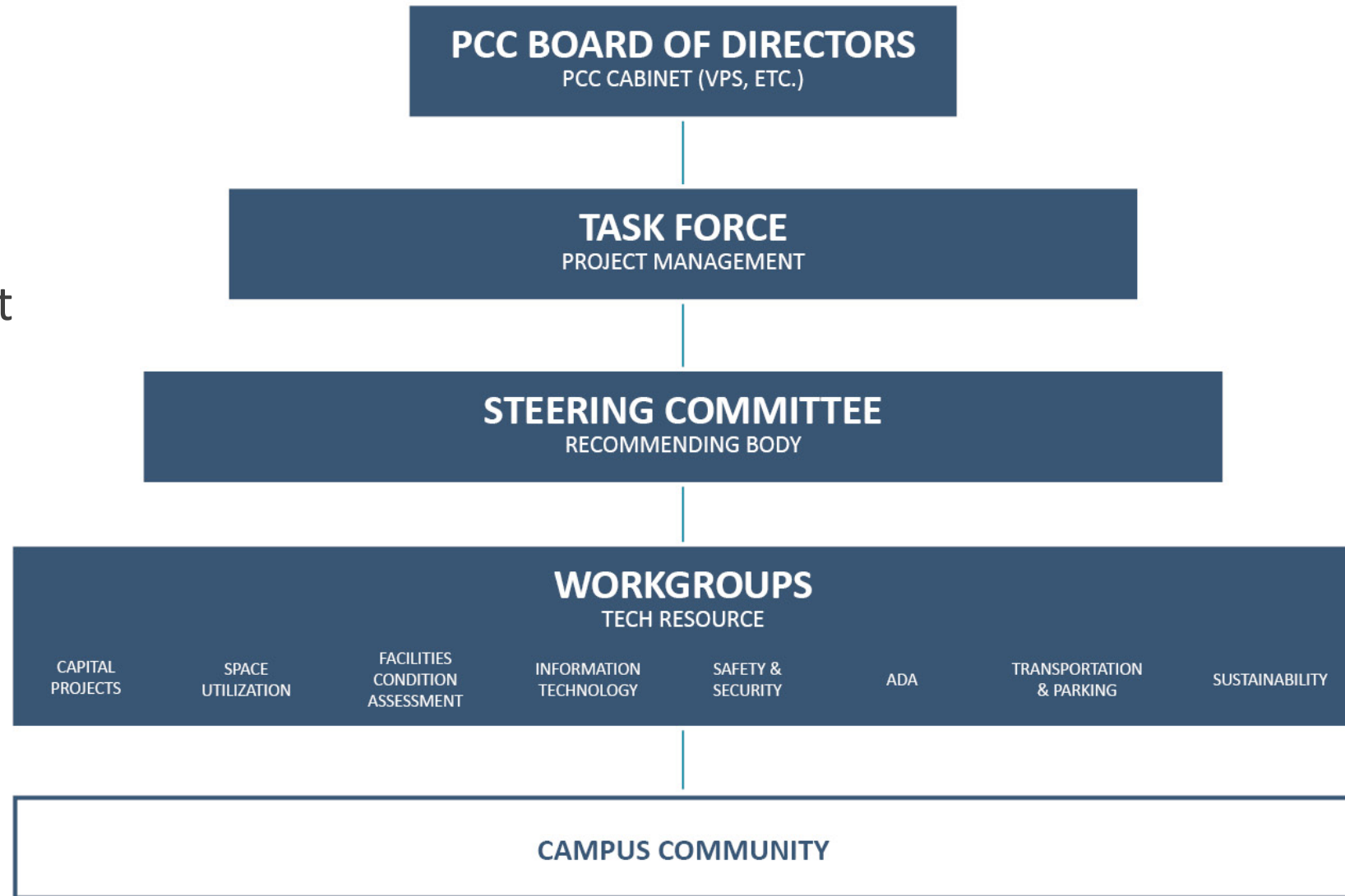
- Discover and document
- Assess all PCC-owned facilities and infrastructure
- Incorporate Critical Race Theory
- Complete Spring 2018



FACILITIES PLANNING PHASE I

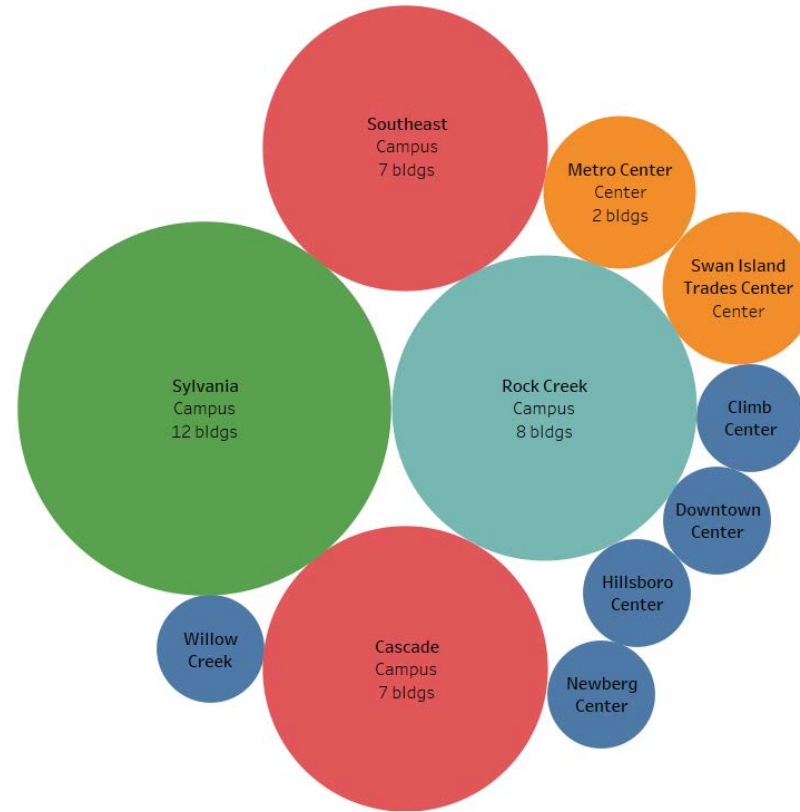
Focus Areas

- Capital Projects
- Space Utilization
- Facility Conditions Assessment
- Information Technology
- Safety and Security
- ADA
- Transportation and Parking
- Sustainability

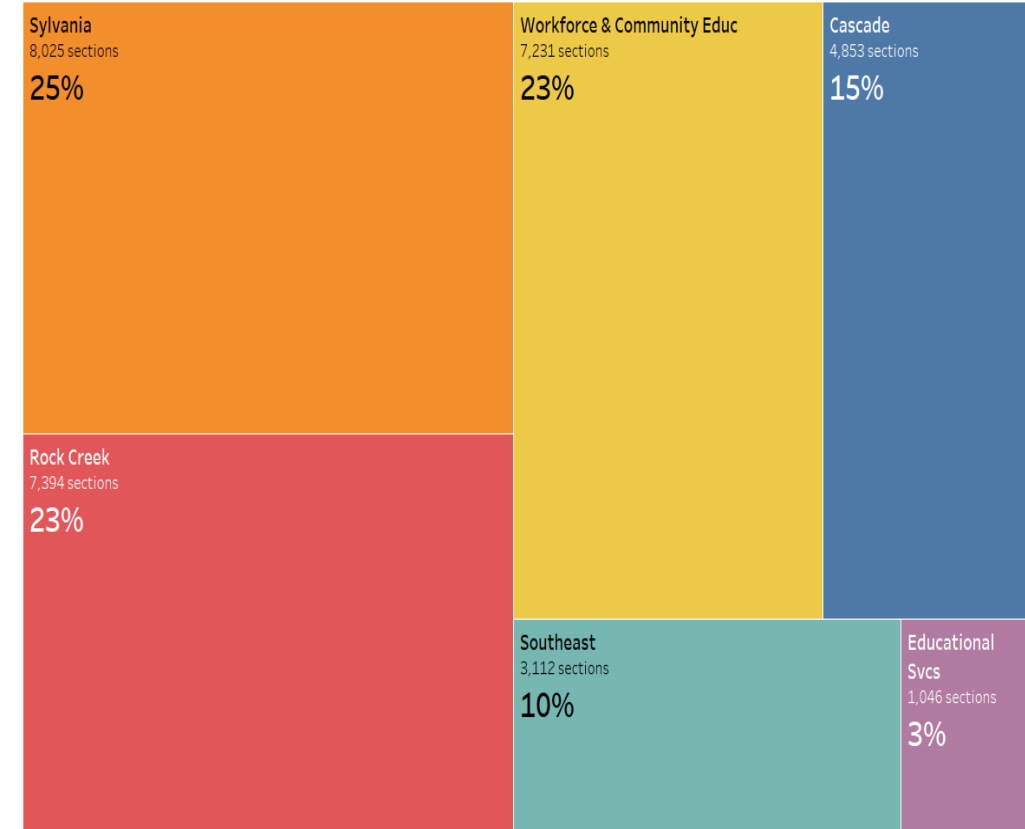


SPACE UTILIZATION

- Inventory and assess instructional space at campuses and centers
- Make recommendations to efficiently manage instructional space



BUILDINGS BY CAMPUS AND CENTER



DISTRIBUTION OF COURSES BY CAMPUS

SPACE UTILIZATION

Room Use

Campus		All Rooms		General Purpose Rooms	
		8am to 5pm	5pm to 10pm	8am to 5pm	5pm to 10pm
Cascade	MTWR	48%	33%	55%	33%
	F	22%	24%	20%	24%
	S	21%	8%	21%	8%
Rock Creek	MTWR	58%	39%	69%	41%
	F	21%	20%	19%	22%
	S	27%	3%	24%	3%
Southeast	MTWR	51%	42%	59%	44%
	F	17%	24%	18%	29%
	S	19%	0%	20%	0%
Sylvania	MTWR	53%	33%	60%	31%
	F	18%	30%	14%	40%
	S	21%	8%	16%	0%

SPACE UTILIZATION

Seat Use

Campus		All Rooms		General Purpose Rooms	
		8am to 5pm	5pm to 10pm	8am to 5pm	5pm to 10pm
Cascade	MTWR	72%	67%	66%	58%
	F	67%	71%	63%	69%
	S	71%	29%	53%	29%
Rock Creek	MTWR	68%	65%	71%	66%
	F	64%	32%	63%	38%
	S	58%	55%	63%	55%
Southeast	MTWR	72%	68%	78%	68%
	F	63%	66%	74%	77%
	S	70%	0%	70%	0%
Sylvania	MTWR	67%	65%	65%	60%
	F	65%	45%	55%	30%
	S	53%	74%	38%	0%

FACILITIES CONDITION ASSESSMENT

Assess all PCC-owned properties identifying elements needing maintenance, repair, modernization or significant investment to determine building component lifespans and repair/replacement costs

FIRE & LIFE SAFETY

- Code issues

INTERIOR FINISHES

- Partition Condition
- Floor Condition
- Base Condition
- Ceiling Condition

DOORS

- Panel Condition
- Hardware Condition
- Clearances per code
- Rating

LANDMARKS, ART, VIEWSHEDS

MECHANICAL, ELECTRICAL, PLUMBING

- Area Served
- Code deficiencies
- System deficiencies
- Action to mitigate deficiency
- Code Violation
- Equipment condition
- Equipment life expectancy
- Maintenance
- Energy efficiency

SKYLIGHTS

- Condition
- Functionality
- Controls / function
- Sufficient light allowance

EXTERIOR ENVELOPE

- Wall finish material condition
- Soffit material finish condition
- Other finish conditions

ROOFING

- Membrane condition
- Roof penetration condition
- Flashing condition
- Roof drainage condition

ECOLOGICAL RESOURCES

- Canopy cover
- Environmental conservation zone
- Riparian value zones
- Wetland boundaries

FACILITIES CONDITION ASSESSMENT

Name	Aggregate	Structure (Seismic)	FLS	ADA	Facilities	Mechanical	Electrical	Plumbing	EUI	Sustainability	I.T.
Amo De Bernardis College Center											
Automotive & Metals Building											
Automotive Storage Building											
Bookstore											
College Services Building											
Communications Technology											
Health Technology Building											
Heat Plant											
Library											
Performing Arts Center											
Social Science Building											
Science Technology Building											
South Classroom Building											
Technology Classroom Building											

ADA

- Evaluate all interior and exterior areas with focus on accessibility from ADA parking to building entrances
- Develop Accessible Travel Networks following paths of travel that serve the majority of users



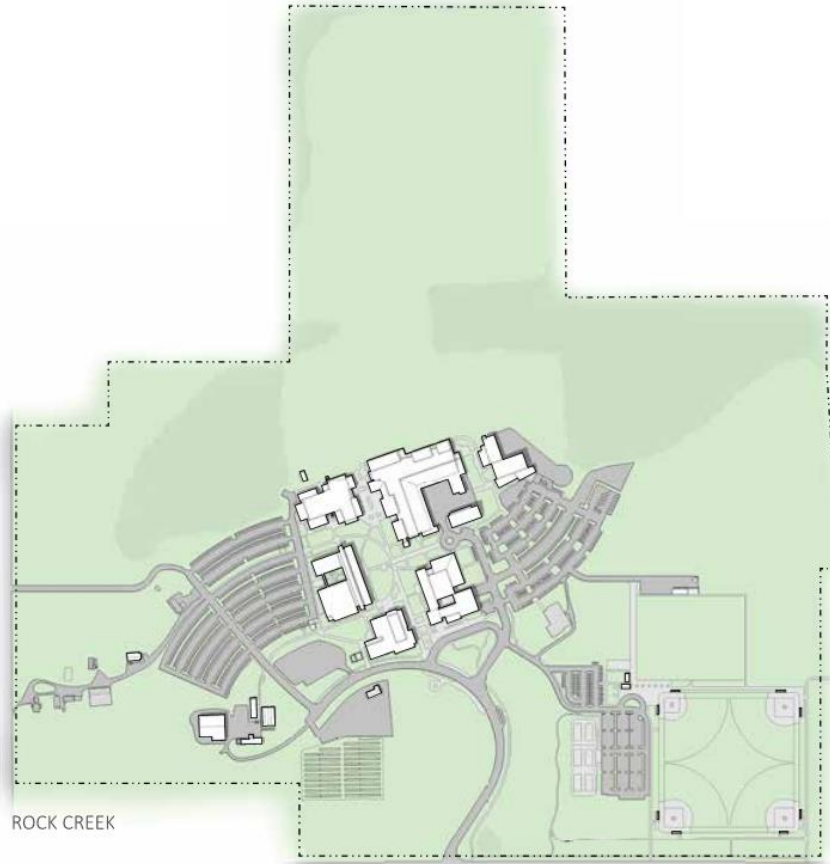
CAMPUS SIZE



CASCADE



SYLVANIA

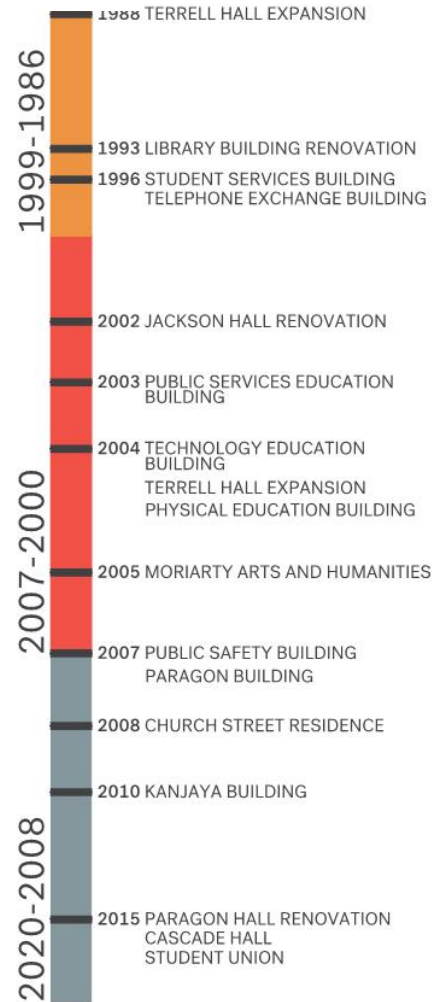


ROCK CREEK



SOUTHEAST

CAMPUS DEVELOPMENT CHRONOLOGY



DEVELOPMENT PATTERNS & OPPORTUNITIES

