

# Newberg Center

July 21, 2016

Board of Directors Meeting  
News & Updates

# Overview

- The People – our staff
- The Place – our building
- The Program – what we offer
- The Partners – community engagement
- The Potential – what we need

# The People

- Full-time Staff:
  - Lynn Montoya Quinn, Director
  - Sarah Elsasser, Orientation & Advising Specialist (filling in for Andrew Black on leave)
  - Fern Berryman, Administrative Assistant
- Professional Support Staff (1 x week):
  - Craig Wickenberg, Counselor
  - Kathleen Noss, Disability Services Counselor



# The People

- NC Casual Staff:

- Michael Miller
- Veronica Montoya-Santana
- Ann Thompson
- Roy Ray

- Faculty

- More than 30 faculty members providing instruction across more than 20 disciplines
- One full-time faculty from Sylvania
- Adjunct instructors who also teach at PCC, George Fox University and other local colleges



# The People – NC Students

## 337 students

- 179 Female (54.6%)
- 149 Male (45.4%)
- **24%** enrolled in remedial/pre-college classes
- **14%** enrolled in career technical classes
- **62%** enrolled in lower division transfer classes

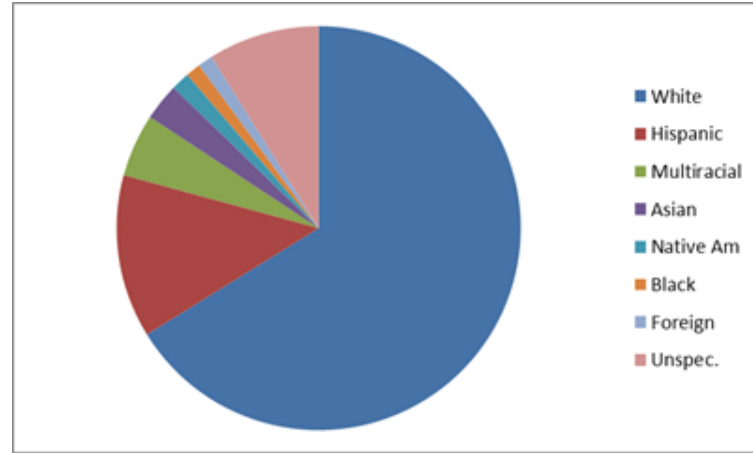
## Enrolled

- 35 Part-time (1-5cr) 11.4%
- 114 Half-time (6-11cr) 37.3%
- 157 Full-time (12+cr) 51.3%
- 63% under 24 years old
- Fall 2015



# Fall 2015 Demographics

Ethnic Group	Count	%
White	223	72.6%
Hispanic/Latino	44	14.3%
Pacific Is	0	0%
Multiracial	17	5.5%
Asian	10	3.3%
Black Amer/African	4	1.3%
Native Am	5	1.6%
Foreign	4	1.3%
Not specified	30	

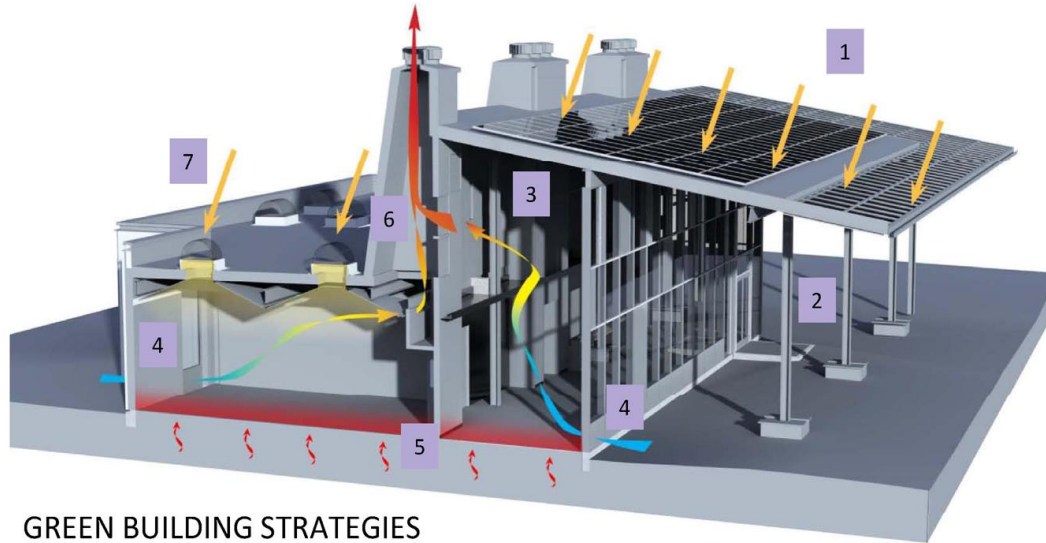


*Many thanks to Laura Massey, IE*

# Enrollment Trends

- 2010-11 = 101.39 FTE
- 2011-12 = 171.76 FTE (Building opened Fall 2011)
- 2012-13 = 166.07 FTE
- 2013-14 = 168.83 FTE
- 2014-15 = 174.05 FTE
- 2105-16 = 148.81 FTE (w/o Su16)

# The Place



## GREEN BUILDING STRATEGIES

- |                        |                      |
|------------------------|----------------------|
| 1. Photovoltaics       | 5. Thermal Mass      |
| 2. Covered Plaza       | 6. Ventilation Stack |
| 3. Fan                 | 7. Skylight          |
| 4. Natural Ventilation |                      |

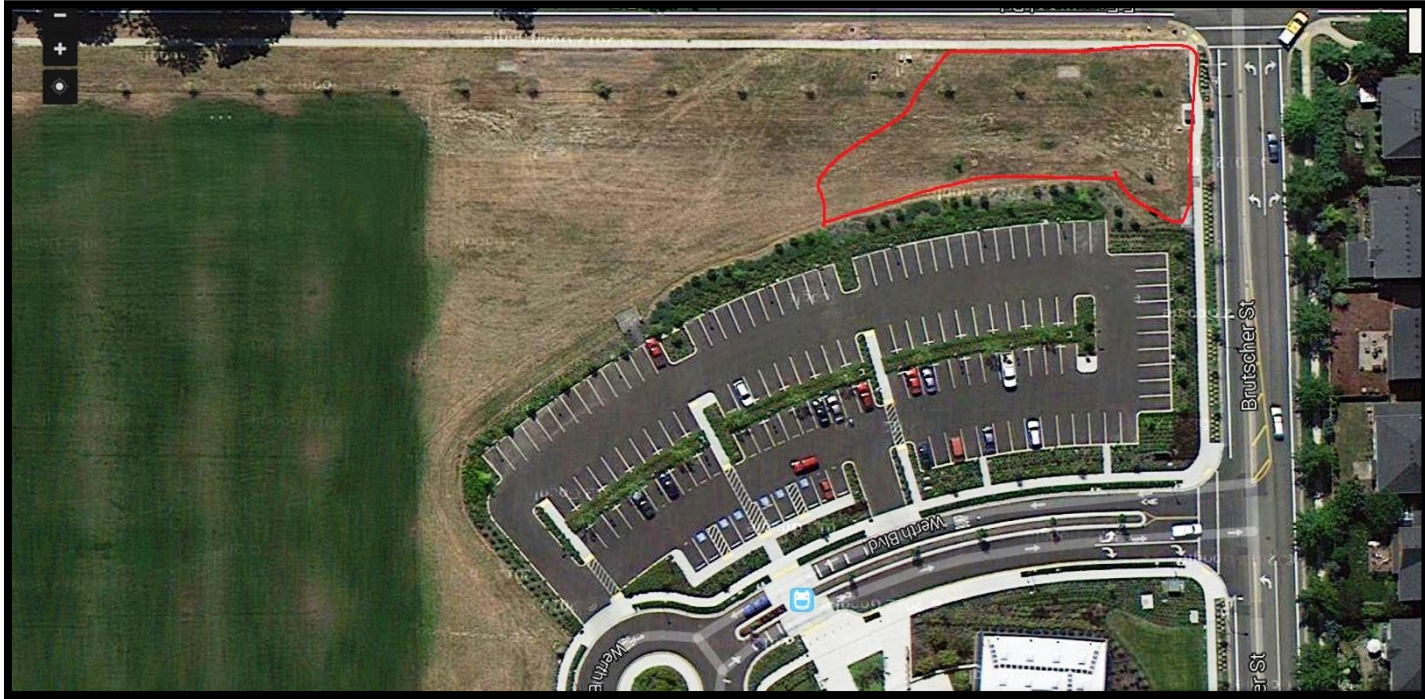


# Building Updates

- Returned to building in late December 2015
- Recommissioning work completed early 2016
- April 2016 energy report showed +26% energy!



# The Place: NC Learning Garden



# The Plan





# 2015-16: TGIF Phase 1



# 2016-17: TGIF Phase 2



# The Program

- Pre-college courses
- LDT & CTE courses
- Non-credit offerings
- Student Services:
  - Placement Testing
  - Orientation
  - Advising
- Career Counseling
- Personal Counseling
- Disability Services
  - Counseling
  - Proctored Testing
- Student Leadership
- Workshops
  - Scholarship
  - Motivational

# NC Courses

- American Sign Language
- Introduction to Photography
- Introduction to Business
- College Survival & Success
- Transfer to a 4 Year School
- Public Speaking
- Microsoft Office Classes
- Computer Information Systems Intro
- Spanish
- History
- Philosophy
- Sociology
- Literature
- Psychology
- Geography
- Economics
- Political Science
- Reading
- Writing
- Math
- English for Speakers of Other Languages
- Stress and Human Health
- Personal Health
- Sociology in Everyday Life
- Beginning Fitness & Walking

# The Partners

- **Projects & Opportunities**

- Welding shop & classes in Newberg High School
- Revitalization Grant for STEM opportunities in NSD
- Classes on-site for business (credit and/or non-credit)
- Dual credit and Expanded Options Program for local high schools (240 NHS, 617 SHS)

- **Events**

- Working with local high schools for events and tours, financial aid days and more
- Participating in Newberg Old Fashion Festival & Sherwood Robin Hood Days
- Sponsoring Tunes on Tuesday

- **Sharing Spaces**

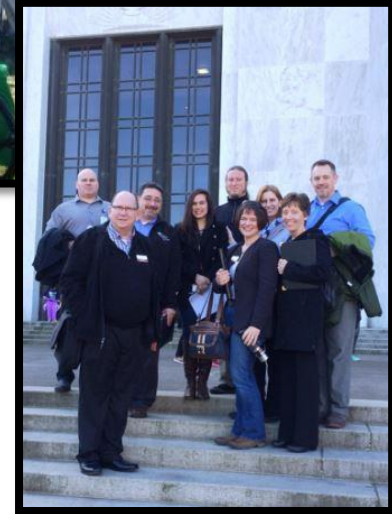
- Chehalem Parks & Recreation District
- Learning Garden at Newberg Center
- Sherwood YMCA
- Room requests



# Scholarships

- PCC Foundation Scholarships
  - Newberg Steel & Fabrication for NHS student with one welding course to attend PCC Welding program
  - Students with Mexican heritage who are graduates of Newberg, Sherwood or St. Paul
  - Resident of Chehalem Valley
- Rotary Youth Leadership Awards (RYLA)
  - NC student awarded scholarship last two years

# In the community



# The Potential

- Refine safety & emergency protocols
- Increase student & faculty support through additional staffing
- Deepen connection with community
- Investigate transportation options
  - Currently a 2 hour bus ride to Sylvania
- Develop culture of sustainability
- Expand course options by utilizing the garden space

# Questions?

# Thank you