



Leveraging Science, Technology and Talent to Create Economic
Growth and Opportunity for the Portland Metro Region

Presentation Overview

- What is the Portland Innovation Quadrant (IQ)?
- Why does the IQ matter?
- IQ First Principles
- Why Innovation Districts? Why Now?
- Portland Context: Fertile Ground for Innovation and Economic Growth
- Big Ideas to Animate the IQ
- Process and Timeline
- Discussion





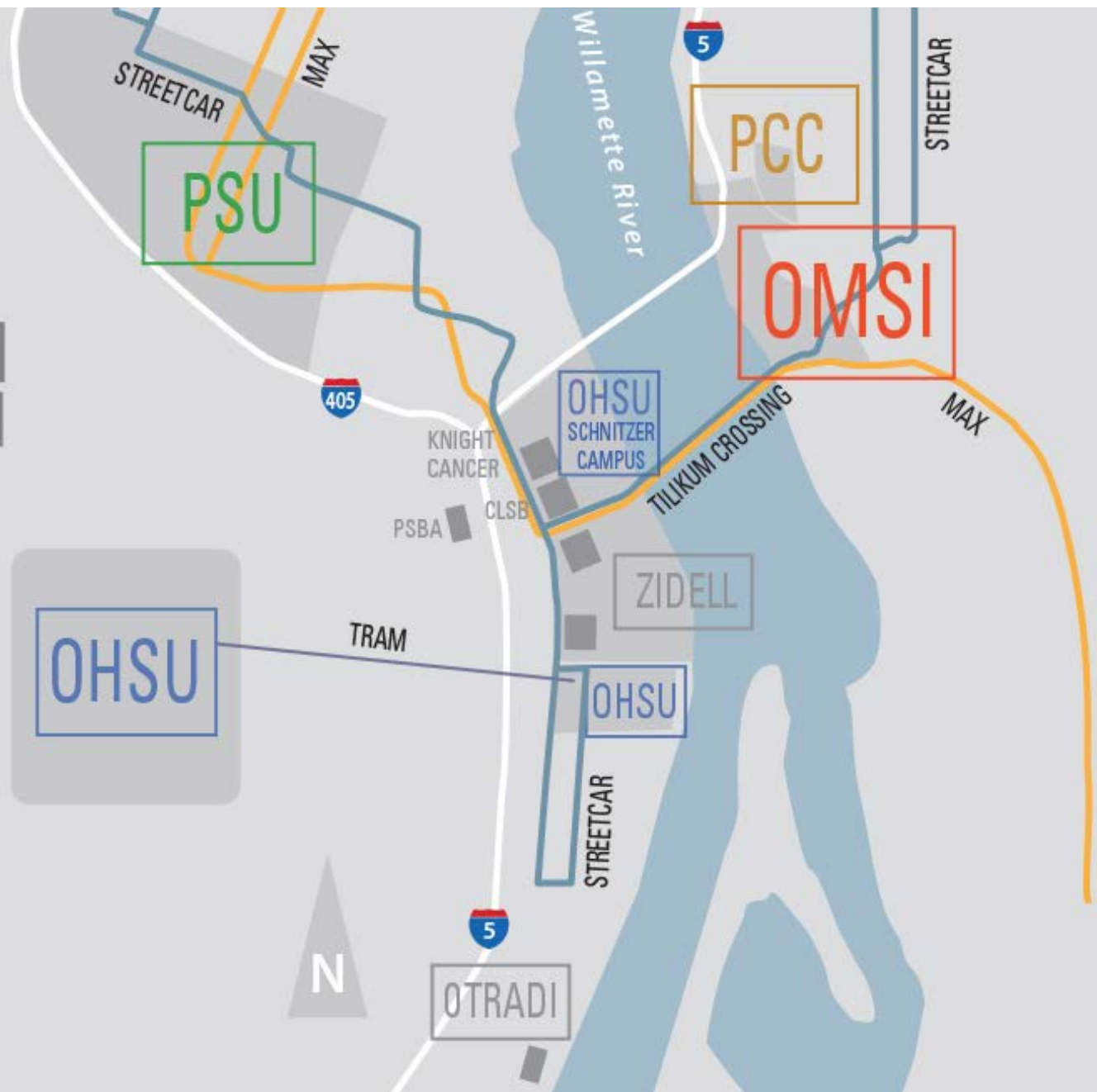
What is the Portland Innovation Quadrant?

The Portland Innovation Quadrant is envisioned as the geographic nerve center of a flourishing innovation ecosystem that attracts talent, entrepreneurs, and investment and propels Portland to global prominence in the cross-collaboration of health, science and technology industries.

The IQ is fueled by a talented STEM workforce cultivated locally through a coordinated STEM career pathway system delivered by 4 anchor institutions (OMSI, PCC, PSU, OHSU) in partnership with regional k-12 school districts and educational partners.



INTERSECTION FOR INNOVATION





Why Does the Innovation Quadrant Matter?

The IQ is a once in a generation opportunity to leverage available land, new infrastructure, and transit investments to amplify a concentrated set of existing and emerging science and technology assets including the Collaborative Life Sciences Building, the Knight Cancer Institute, the OHSU-PSU School of Public Health, OMSI, PCC Climb Center and a thriving ecosystem of business accelerators.

As anchor educational institutions OHSU, PSU, OMSI and PCC have a large stake in the future and success of the IQ.

IQ Strategic Value

1. Attract talent and investment
2. Build workforce pipeline
3. Engage community
4. Build off excellence and expertise of our largest health, science and technology companies – e.g. Intel, Nike, FEI, Providence
5. Promote joint research and development
6. Accelerate tech commercialization, innovation and entrepreneurship
7. Leverage combined partner resources to advocate for and realize shared goals
8. Showcase Portland's leadership in a tangible, geographic district





IQ First Principles

- Accessible to All
- Grow STEM talent pipeline
- Collaborative Leadership
- Inclusive Growth
- Intergenerational
- Compact Urbanism





CORTEX
innovation community

MC

MASSCHALLENGE

Innovation Districts: A New Economic Development Paradigm

“Innovation Districts are geographic areas where leading-edge anchor institutions and companies cluster and connect with start-ups, business incubators, and accelerators. They are physically compact, transit-accessible, and technically wired and offer mixed use housing, office and retail.”

Brookings Metropolitan Policy Program





Why Innovation Districts? Why Now?

- New Geography of Innovation
 - Change in location preferences of people and firms
- Mash-up of technology and traditional industry
 - Open innovation, collaboration and hybridization
- Strong preference for urban location
 - Millennials prioritize transit-oriented, amenity-rich urban core or close-in neighborhoods



Portland Context:

A decade of investment and growth has created Fertile Ground for Innovation

- Major *infrastructure and transit investments* by PDC and TriMet
- Significant *higher education growth, development and investments*
- Robust *entrepreneurial and startup activity* rooted in or near the IQ
- Commitment, vision and investment by *skilled, local real estate developers*
- A *thriving technology ecosystem* composed of large and small companies, industry associations, incubators and investment networks

IQ Assets:

Education & Engagement Reach

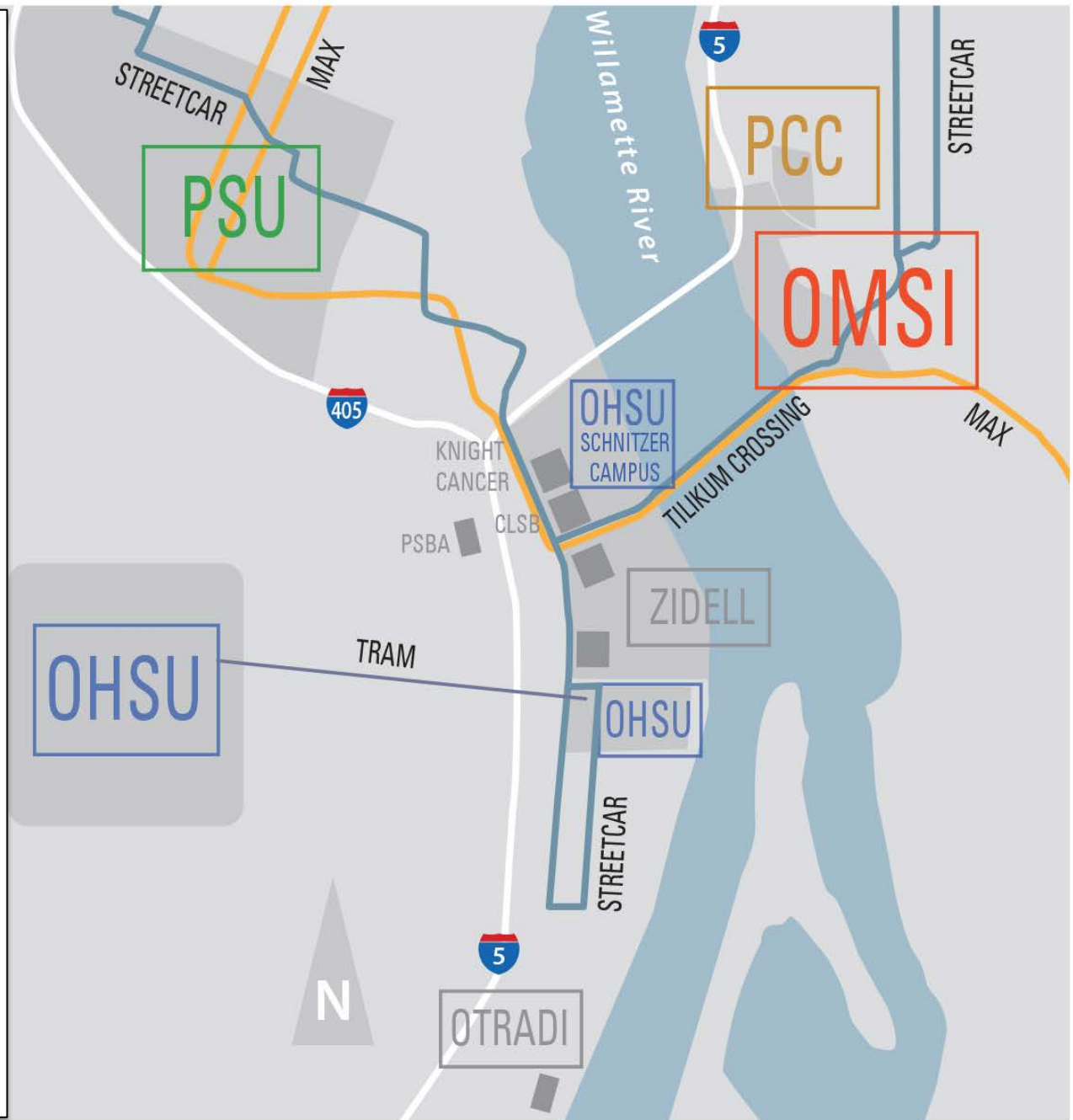
- ☐ OMSI 1M annual reach
- ☐ PCC – 85,295 student body
- ☐ PSU 28,241 student body
- ☐ OHSU 3,342 student body
- ☐ Total employment = 20,000+

Transit & Infrastructure

- ☐ Transit Connectivity – tram, light rail, street car, Tillikum Crossing
- ☐ South Waterfront/Eastbank Esplanade
- ☐ SWF Street Grid
- ☐ Bike Paths
- ☐ Greenspace & parks

Startups and Maker Space

- ☐ Portland State Business Accelerator – 30+ resident companies (software, bio, energy)
- ☐ PCC Small Business Development Center
- ☐ OTRADI – proof-of-concept bioscience laboratories
- ☐ Oregon Bio-Science Accelerator – 15 life science and digital health companies in residence (30 company waiting list)
- ☐ Oregon Bio-Science Association
- ☐ Cambia Direct Health Solutions
- ☐ ADX – maker space, learning center and custom fab
- ☐ The Redd – artisan, local food co-working space
- ☐ Forge Portland – social enterprise co-working space





IQ investments coming on-line

- ☐ Knight Cancer Institute
- ☐ Health and Healing II
- ☐ PSU-OSHU School of Public Health
- ☐ Zidell Block 6
- ☐ PCC Health Professions (exploratory)
- ☐ Ambulatory Hospital
- ☐ Parking + Housing



IQ development sites

- ☐ Shnitzer campus – 26 acres
- ☐ OMSI property – 9 acres
- ☐ Zidell – 30 acres
- ☐ PSU/University Place – 4 acres
- ☐ ODOT Lots



What “Big Ideas” might animate the IQ?

- Understand the megatrends (aging population, AI, robotics, “quantified self,” IoT, climate change)
- Be clear-eyed about assets and opportunities
- Set shared, audacious goals
- Enlist and incentive the ecosystem
- Align interests and build partnerships



“BIG IDEAS”

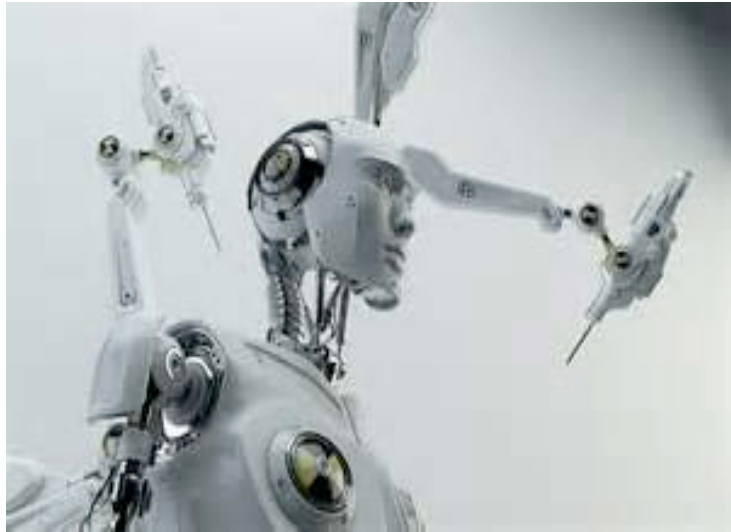


Urban Health in the Digital Age

- Focus on health of urban population through monitoring of air, water, fitness, nutrition and other leading health indicators
- Develop and adopt widespread use of wearables and sensors
- Position Portland as leader in “personalized medicine” and “quantified self”
- Link health with “big data” and “smart city” capabilities



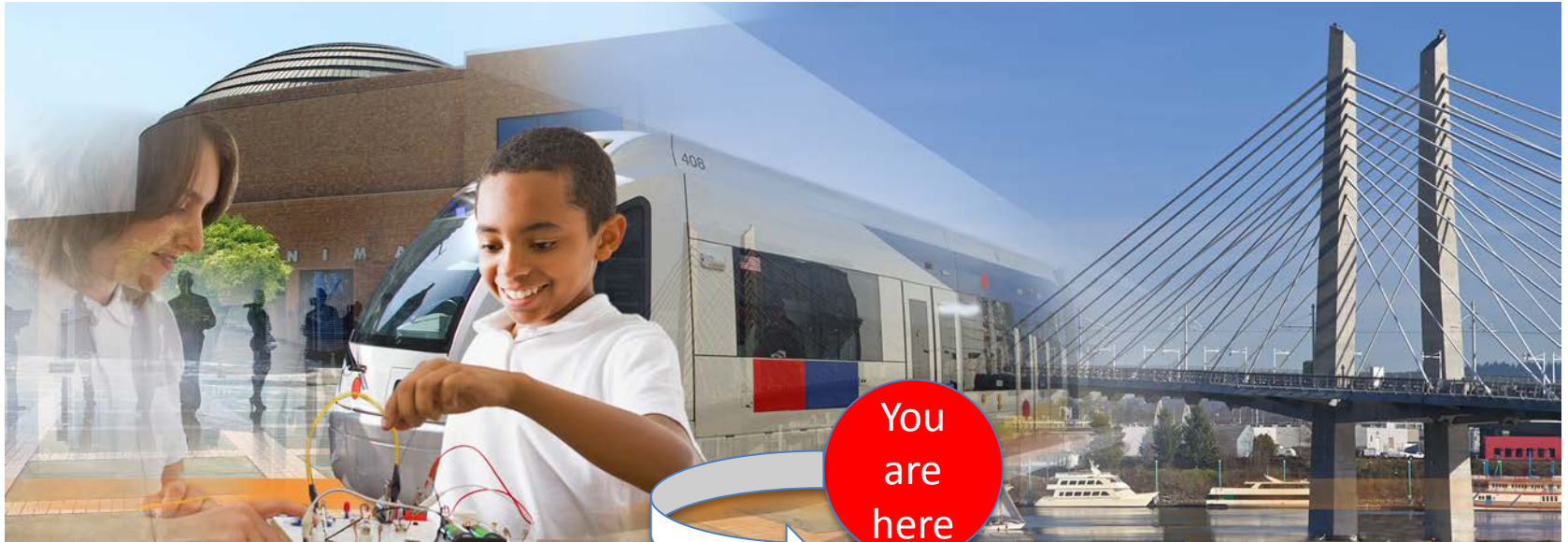
“BIG IDEAS”



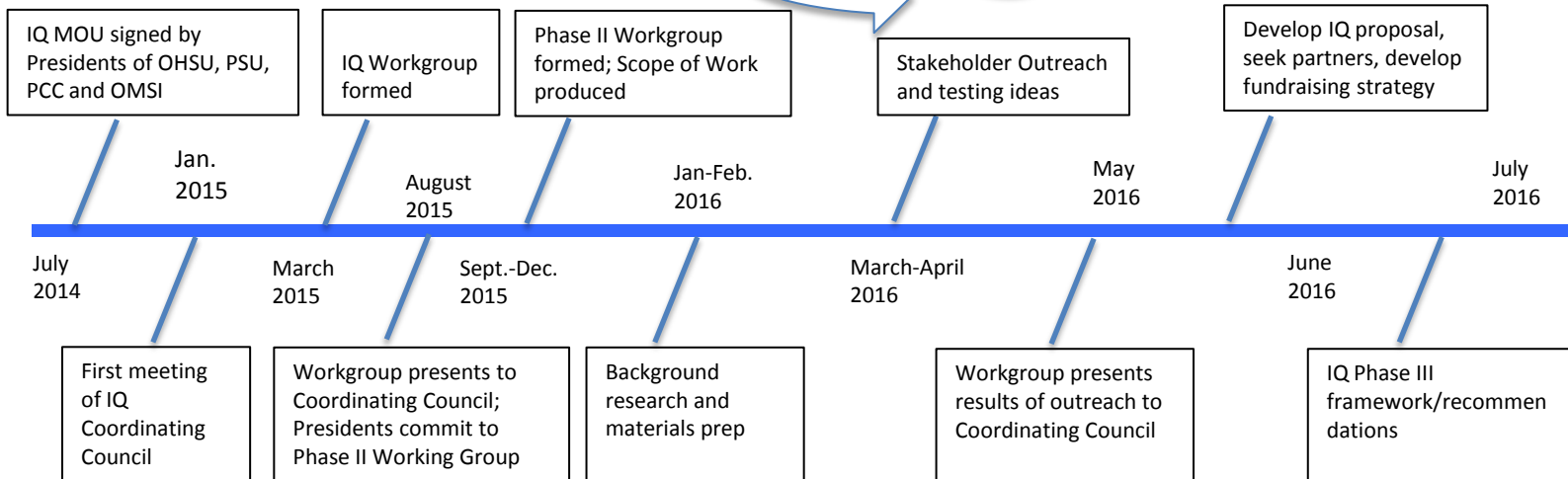
The Future of Making Things

- Factory of the Future (vehicles, devices, sensors, materials)
- Internet of Things (IoT), robotics and artificial intelligence
- A living laboratory to see, touch, design and build health, science, and technology products
- STEM High School located in the IQ
- Interconnected maker spaces





You
are
here



Timeline and Process

For more information please contact:

Erin Flynn

Associate Vice President for Strategic Partnerships

Portland State University

eflynn@pdx.edu

503.725.8490

