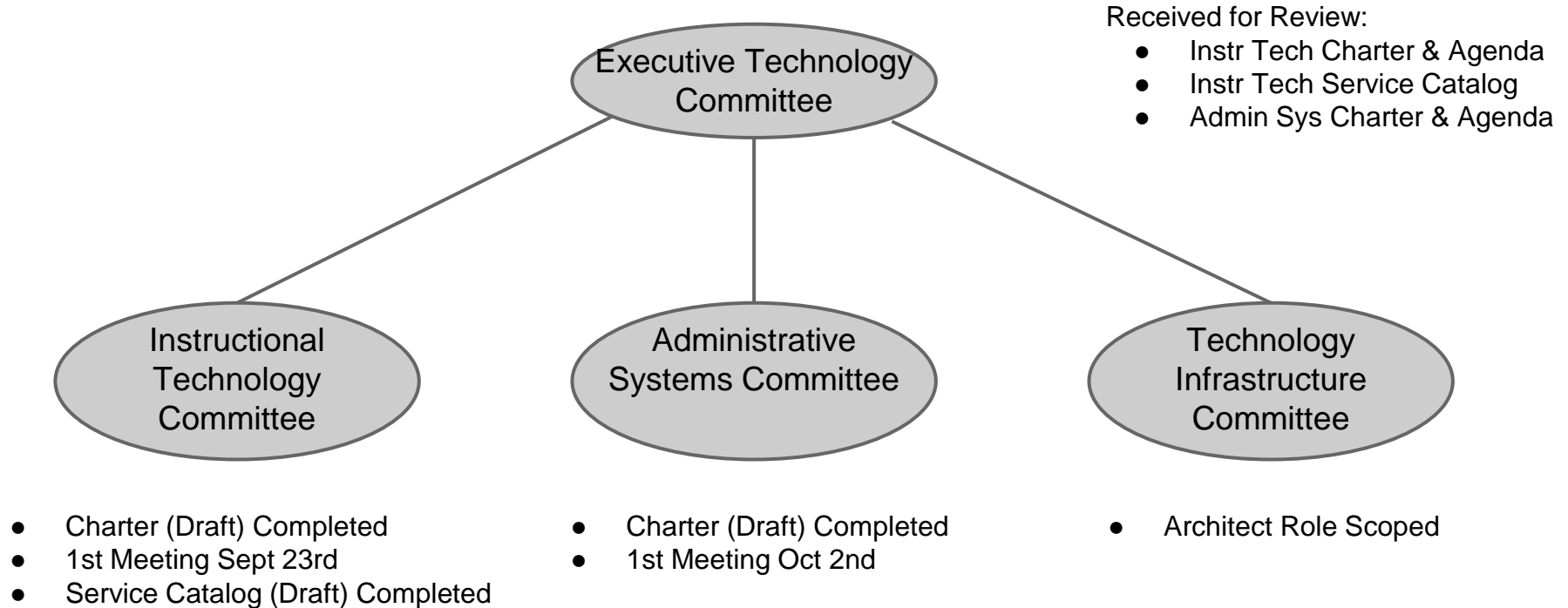


TSS Progress Update

September 2015

Governance Committees - Progress



Information Security Initiatives - Progress

1. **Upgrade McAfee Anti-Virus** to scan for malware on servers & workstations - Complete
2. **Perform Cylance Server Scanning** to detect intrusions - Complete
3. **Comply with PCI Guidelines** to protect credit card data - Complete end of Sept
4. **Network Penetration Test** to determine if credit card data can be stolen - In progress
5. **Harden Workstations** to apply consistent software patches, restrict administrator rights, enforce more complex passwords, impose browser restrictions & join to Active Directory - Dozens of Workstations Complete
6. **Implement Checkpoint Anti-Malware & Anti-BOT Blades** to block malware as it tries to enter the network - Turned on in Default Mode
7. **Implement Security Policies & Awareness** to engage the PCC community in preventing cyber attacks - Updated Draft targeted for Sept 18th
8. **Implement Tenable** to continuously scan for vulnerabilities in infrastructure & provide visibility to logs to identify attacks - Targeted end of Sept
9. **Operationalize Checkpoint Intrusion Protection System** to block more intrusions & attacks - Developing Statement of Work
10. **Comply with HIPAA Guidelines** to protect personal medical data - Developing Plan

Service Catalog - Categories

Applications

Accounts & Passwords

Classrooms & labs

Desktop Services

Email & Collaboration

Infrastructure Svcs (Network, Servers, Storage, Workstations)

Media & events

Security

Training Services

Voice Communications

Web Services

Network Redesign Deployments

Edge Firewalls	Complete
Wireless	Complete
Southeast Campus	Complete
PCI Compliance	Complete
Cascade Campus	Complete
Data Center	Complete
Sylvania Campus	10/9 - 10/11
Rock Creek Campus	10/23 - 10/25
Hampton Square, Capitol Park, etc.	November
Downtown Center	November
Others	Nov - Jan '16