

Transportation and Parking Services

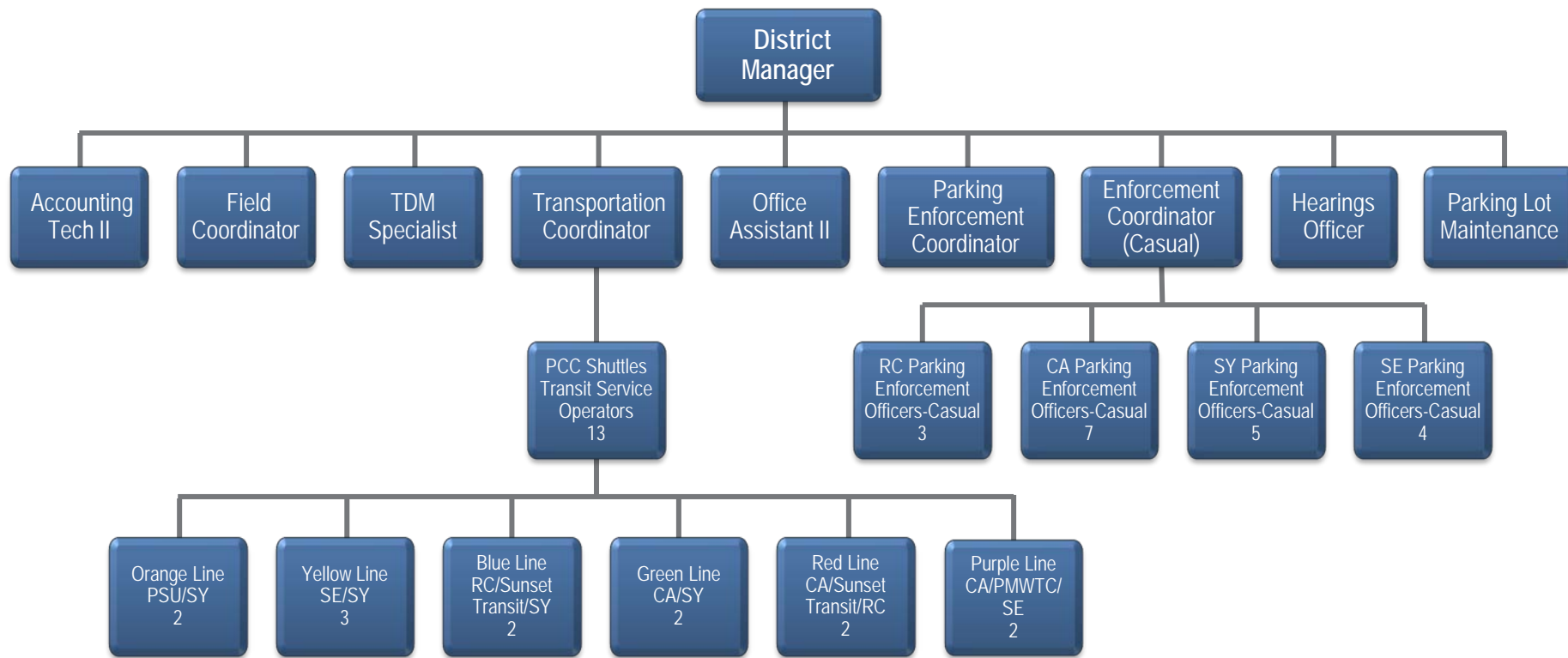
Transportation Demand Management 2015 Update

The Transportation and Parking Services Department is committed to sustainability, and transportation demand management; by reducing the number of single occupancy vehicles traveling to campus.

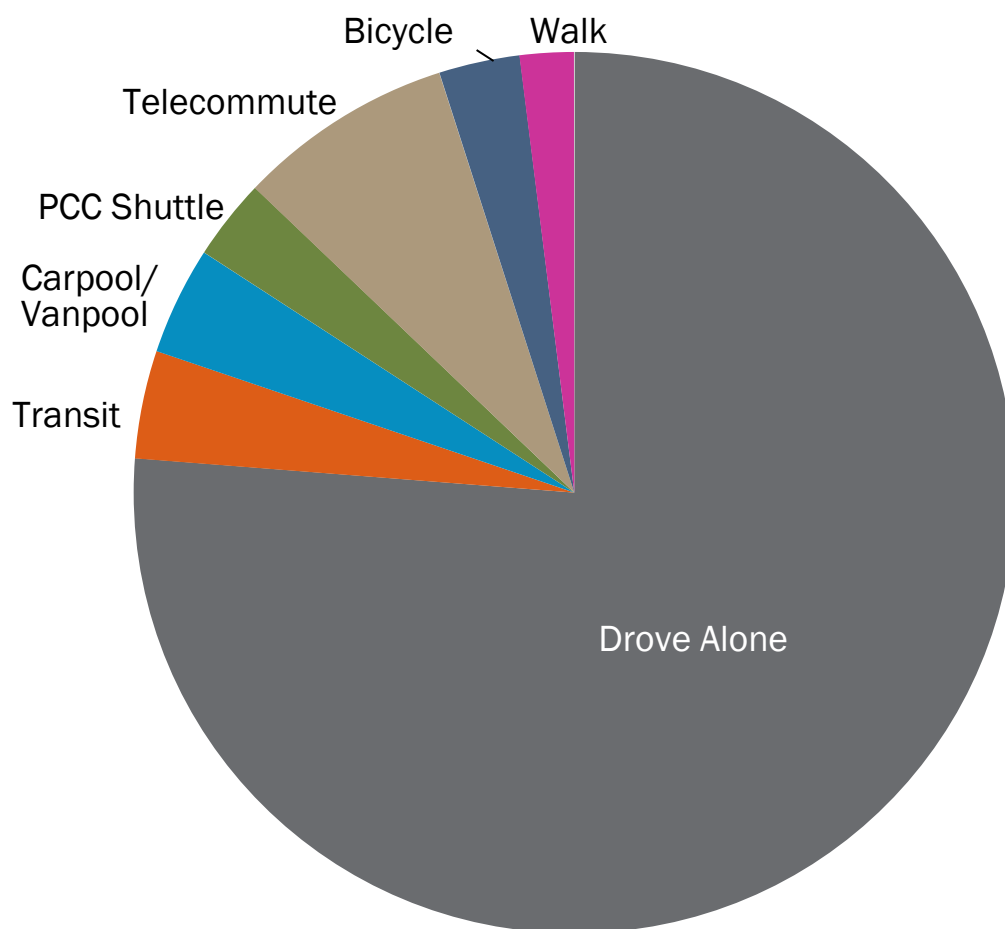
TPS mitigates existing traffic and parking challenges to ensure that all members of the campus community have equal access to all campus facilities.



Mission



TPS Organization Chart

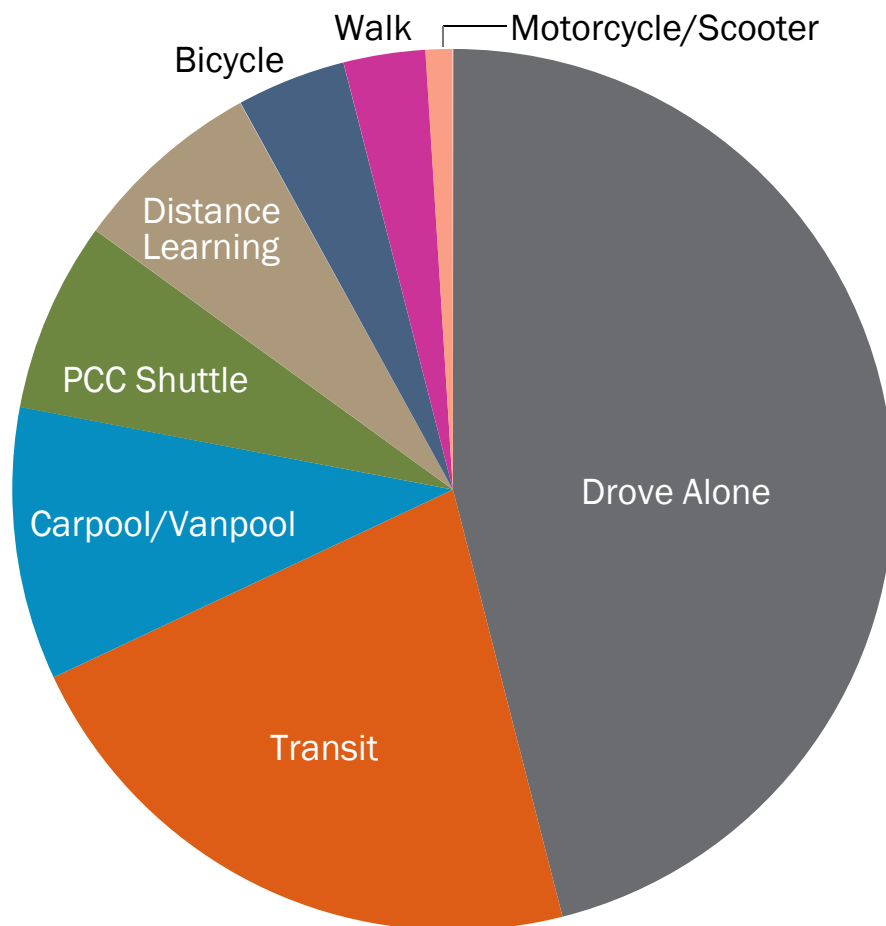


Weekly Trips

- Drove Alone 77% (Target 81%)
- Transit 4%
- Carpool/Vanpool 4%
- PCC Shuttle 3%
- Telecommute 8%
- Bicycle 3%
- Walk 2%

Employee Mode Split

All Campuses Combined (2014 Meets DEQ Target)

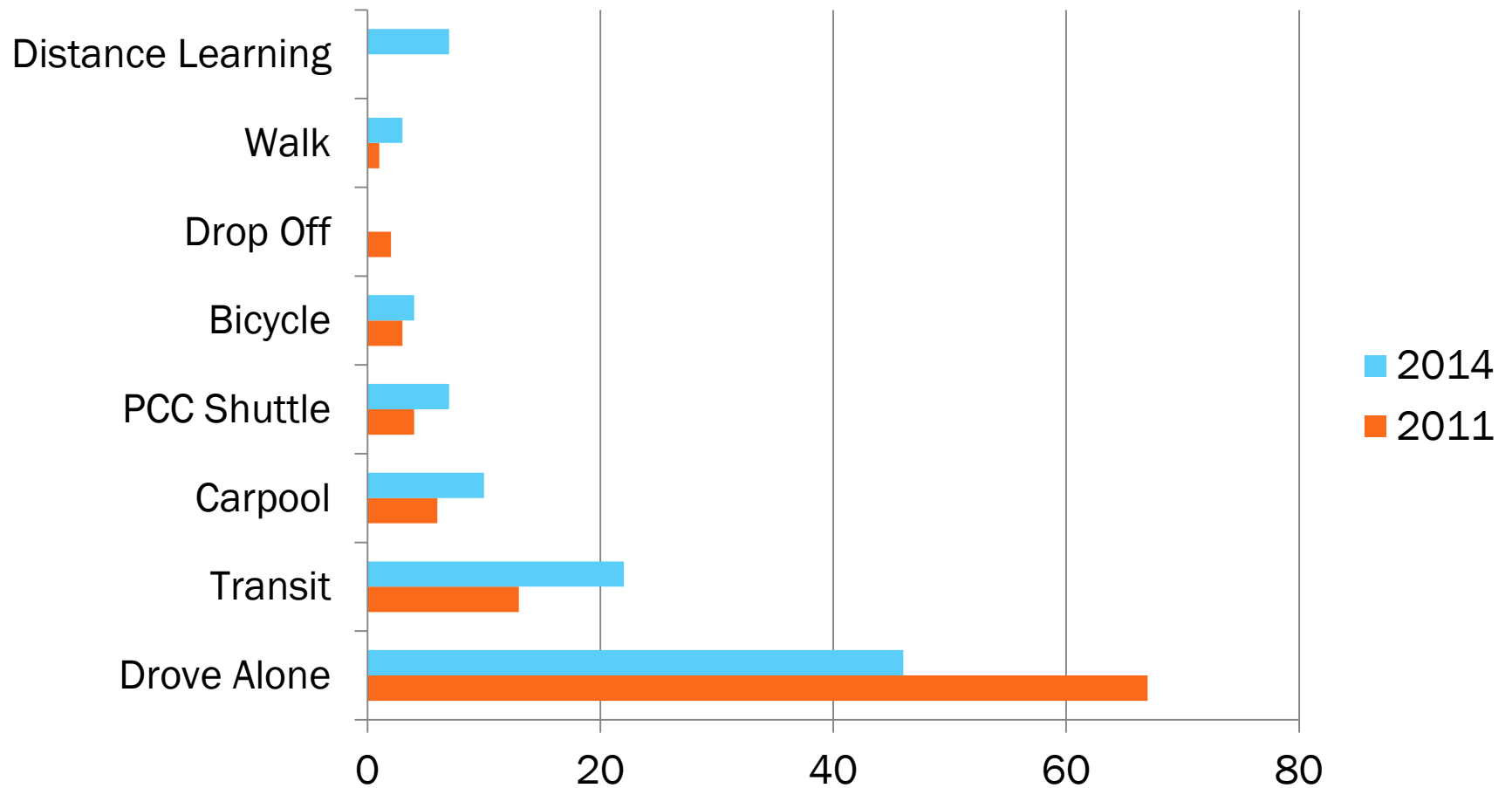


Weekly Trips

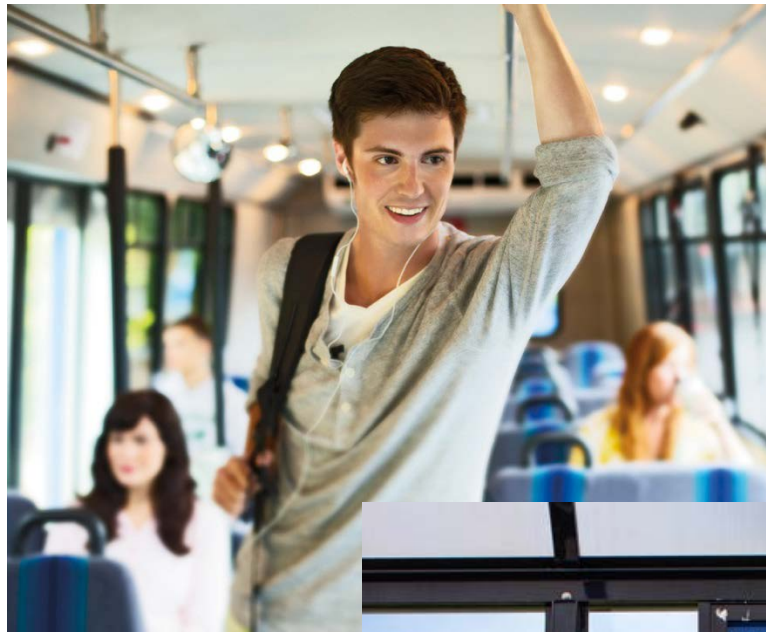
- Drove Alone 46%
- Transit 22%
- Carpool/Vanpool 10%
- PCC Shuttle 7%
- Distance Learning 7%
- Bicycle 4%
- Walk 3%
- Motorcycle/Scooter 1%

Student Mode Split 2014

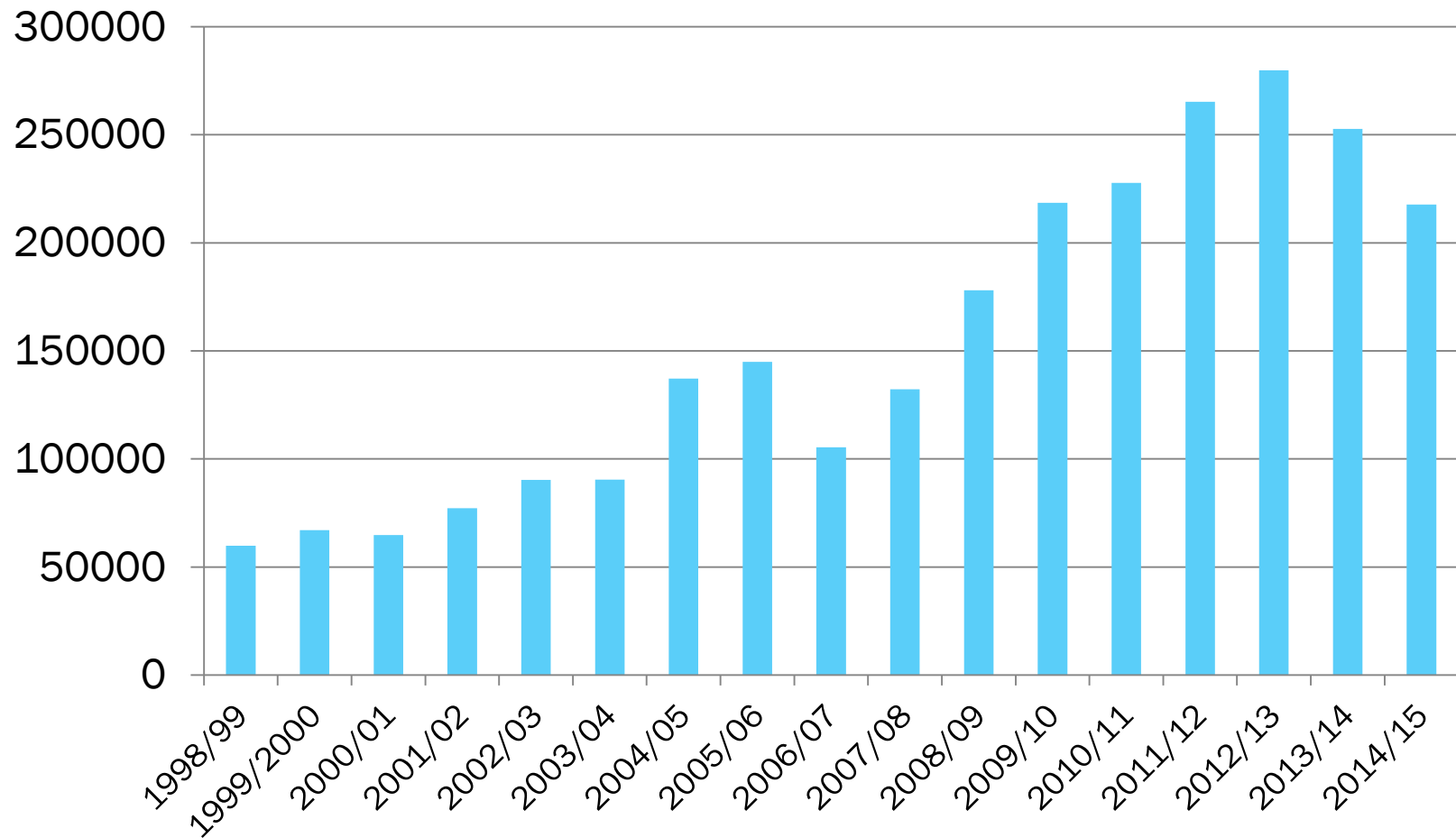
All Campuses Combined



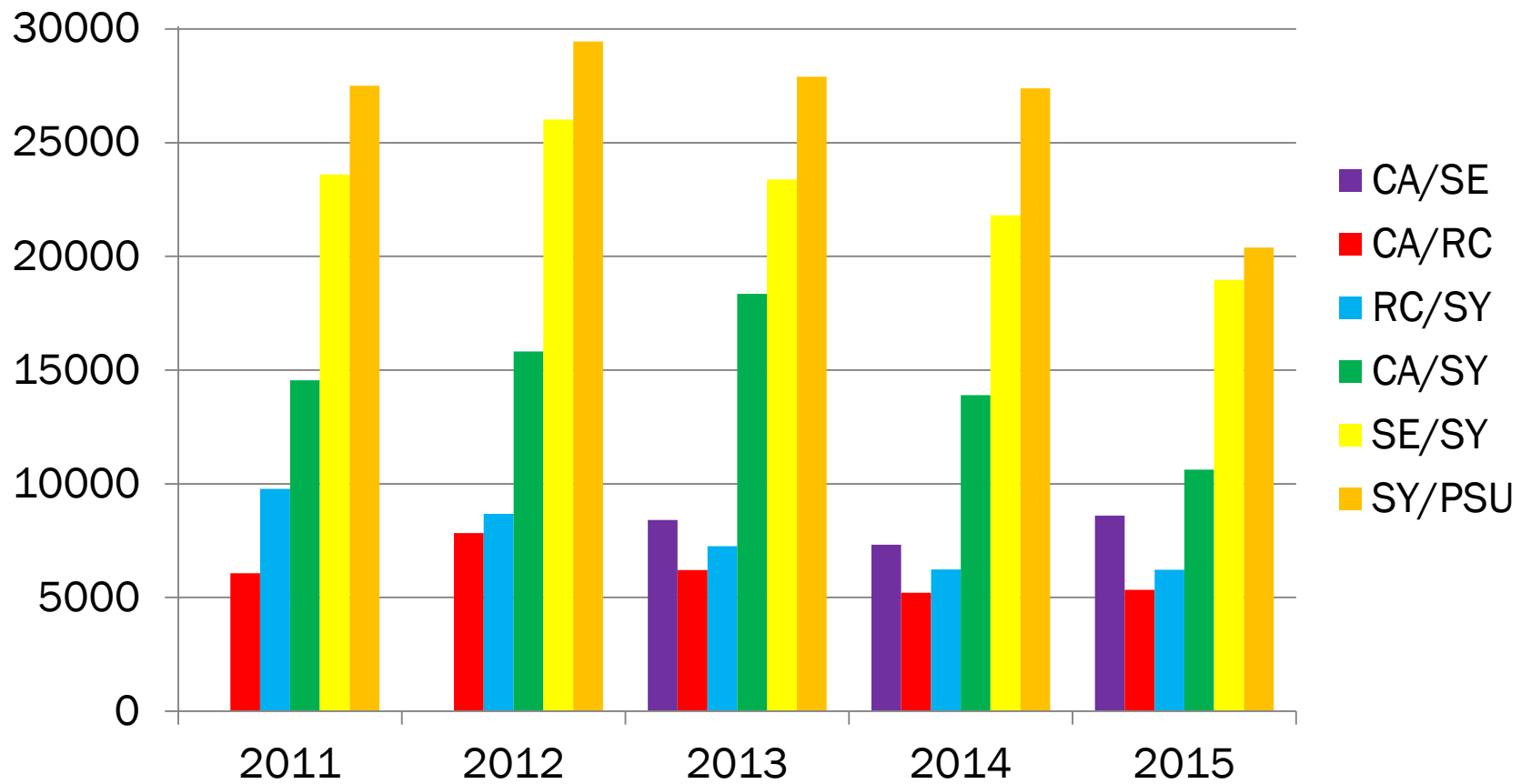
Student Mode Split 2011/2014



PCC Shuttle

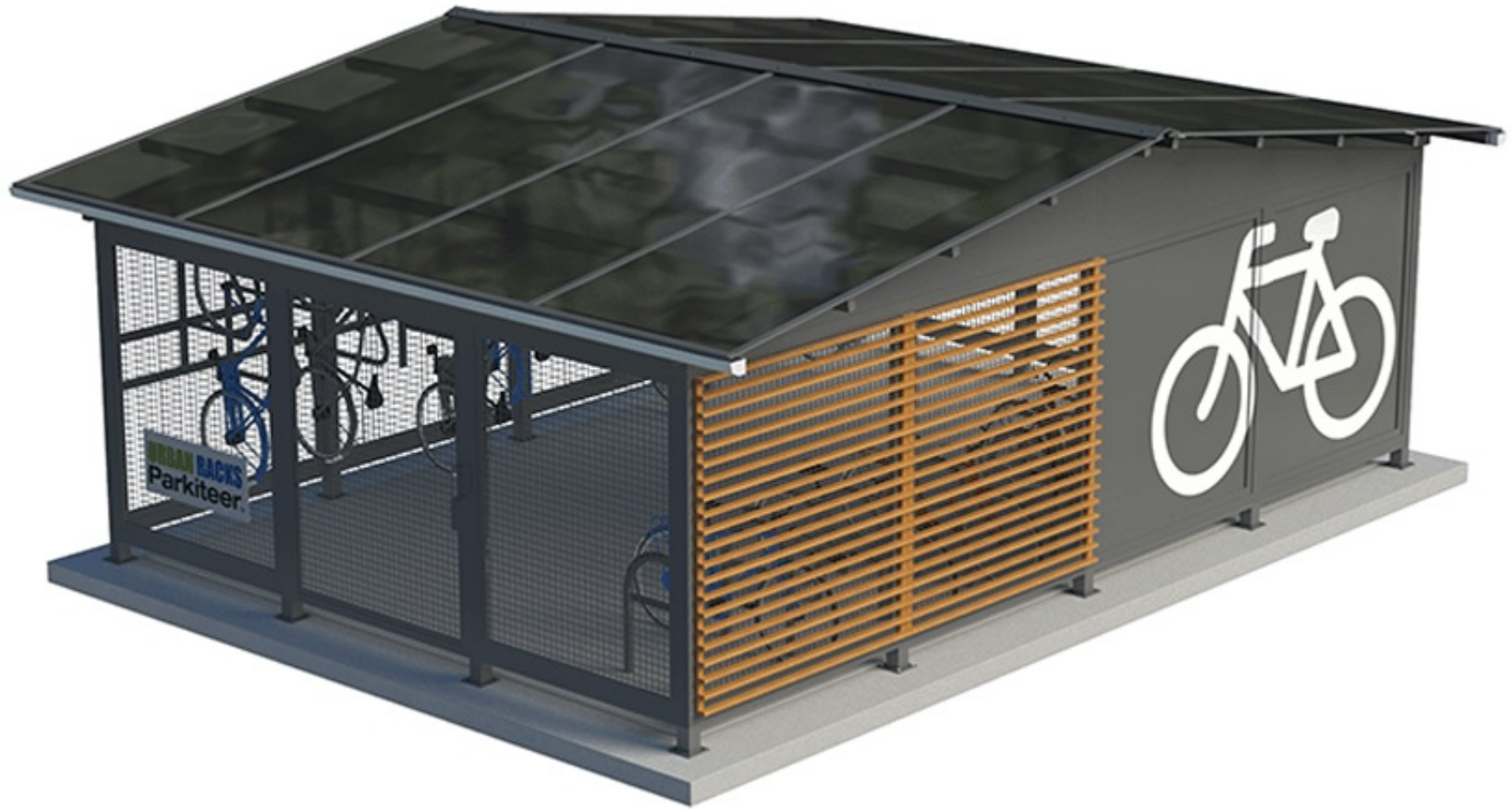


Shuttle Usage by Fiscal Years



Shuttle Usage

Spring Term 2015



Cascade Bike Hub



Cascade Bike Hub

PARTNERING AGENCIES AND ORGANIZATIONS

TriMet

Metro

City of Portland

City of Hillsboro

Hillsboro Chamber of Commerce

Washington County

Westside Transportation Alliance

DEQ

Columbia County Rider

C-Tran

Bike shops

Equipment & Service Providers

ODOT

Car2Go

Neighborhood Associations

Swan Island TMA

Other Higher Education Institutions



Relationships



Westside
Transportation
Alliance



Metro



Partnering Agency / Activities

PCC Campus Activities

Website improvements

Shuttle Brochure

Transportation Options Brochure

Student Orientation Materials

Bike Parking Facilities & Equipment

ASPCC and Student Networking

Tabling at student events

Community Partnering Activities

Regional Transportation,
Safety and Planning

- TriMet
- Metro
- Washington County
- ODOT

Leverage Relationships

- Metro Grant
- PCC Commuter Monitors
- SE Campus Bike Project



Activities



PCC Bicycle Program



PCC Commuter Monitors

Drive Less Save More:

PCC SOUTHEAST

COMING SOON!



CHOOSE WHAT MOVES YOU.

Drive Less Save More:

PCC SOUTHEAST

COMING SOON!



CHOOSE WHAT MOVES YOU.

SE Campus Bike Project



SE Campus Bike Project



Metro Grant

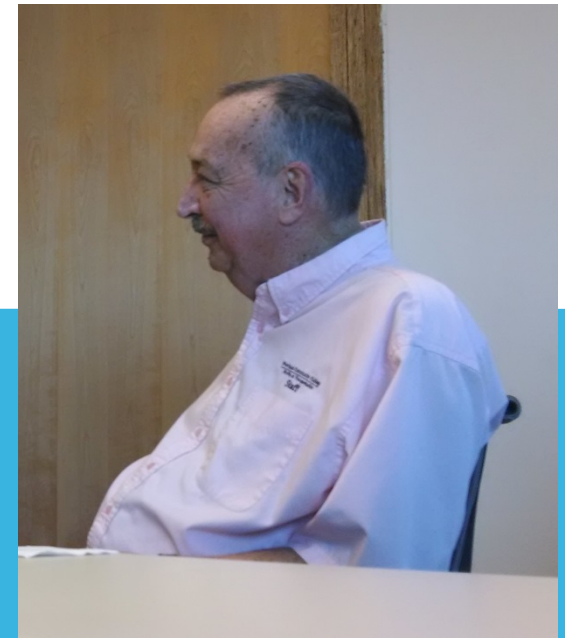
- Communicate with and educate the college community about active transportation and transit/rideshare options via the PCC website, emails, events, and commuter monitors.
- Increase revenues (employee parking permits or fees) to provide employee transportation options; this would require contract negotiated solutions.
- Provide facilities at PCC campuses for bicycle rental programs, repairs and secure bicycle parking.
- Increase PCC Shuttle frequencies and route options as funding becomes available.
- Continue partnering with government agencies and community organizations while pursuing additional leveraging opportunities.

Next Steps

John Garner passed away on June 26th.

John was the District Manager for Parking and Transportation Services beginning his employment with PCC 10 years ago. He had significant achievements including:

- Technological advances such as “Transit Tracker”
- Implementation of the Shuttle service include the graduation shuttle
- Variable daily parking rate options
- Providing Car-To-Go an option to single occupancy vehicle transportation
- Subsidized TriMet Student Passes and Employee TriMet Passes via payroll deduction
- Roadway and parking lot improvements
- Acquisition of energy efficient shuttle buses
- Integrating PCC Shuttle service with TriMet service and “Park and Ride” stations
- Enhanced district-wide neighborhood parking patrol and engaged with neighborhood associations
- Provided additional bike lockers on campuses
- Coordinated with the Bond program during construction
- Helped develop three Transportation Demand Management Studies
- Implemented On-line student permit acquisition.



John Garner

John leaves PCC a better place than when he started.
He will be missed.