

For the first time, Oregon's younger generation is less educated than its older one.



PCC's Future Connect program is changing that.



**FUTURE
CONNECT**

PCC  Foundation
Where Opportunity Happens



The PCC Future Connect program is giving young people the opportunity to succeed in college and career.

WE HAVE A PROBLEM

ONLY ONE-THIRD of Multnomah County high school students will go on to college. **Only half of them will finish.**



Only half of Washington County high school students will go to college.



Only 40% of Washington County high school graduates with low incomes will.

At the same time, Georgetown University's Center on Education and the Workforce predicts that by 2020, **70% of jobs in Oregon will require postsecondary education.**



A community's educational attainment and its economic prosperity are directly linked. According to CEOs for Cities, if the Portland-metro area could increase its college degree attainment rate just one percent, the region would produce an additional \$1.6 billion in per capita income.

To ensure our region continues to thrive, we must create and expand a clear pathway for economically disadvantaged students to earn a college degree.

PCC HAS A SOLUTION THAT WORKS

PORTLAND COMMUNITY COLLEGE, with five decades of proven success helping students earn associate's degrees, transfer to universities and become workforce ready, has a solution: Future Connect.

Future Connect targets low-income, first-generation college students who aspire to attend college, but face barriers to success.

Scholarships + Student Support
= Success

Future Connect opens the door to college—each student receives a scholarship based on financial need. Without this money, these students would not have a shot at college.

But it also provides a guided path through college, whether that's completion of a certificate or degree at PCC or transfer to a four-year college. Without this support, these students would not have a shot at success.

College success coaches help students overcome obstacles and stay in school. They mentor students throughout their college careers with personal, in-depth advising. They are there to help them manage college classes, juggle childcare, find transportation, and overcome self-doubt. It's the one-on-one support students receive at PCC that makes this program stand out.

Future Connect helps students go to college



and complete college.

FUTURE CONNECT CHANGES LIVES

FUTURE CONNECT LAUNCHED in Fall 2011 with a group of 150 Multnomah County students. Since then, the program has enrolled over 600 students. In Fall 2013, the program expanded to include recent high school graduates from Beaverton and Hillsboro. Students enroll as a cohort each fall and stay with the program from two to four years, depending on their goals and needs.

Future Connect students are making significant progress toward their educational and career goals. Future Connect students have interned with the legislature, local government and business; studied abroad; become student government leaders; and earned scholarships to universities. Future Connect graduates are continuing their studies at Portland State, Pacific University, Lewis

“Future Connect helped me in so many ways. I had an amazing coach who inspired me and motivated me, who helped me push myself past my limits, helped me get through one of my toughest times and have a better understanding of where and who I want to be.”

—RAQUEL BARAJAS,
Future Connect alumna and current Pacific University scholarship student

“Since my freshman year in high school, I have wanted to study computer science. Before, I could never picture myself in that type of career because it seemed too far from reality. With the help of the Future Connect team I now see a clear road to the career I dreamed of when I first started high school.”

—ALEJANDRO SERNA,
Future Connect Student

and Clark College, Oregon State University and Brigham Young University, among others. They are on track for careers in psychology, education, medicine, business, engineering, computer science, and more!

“Neither of my parents went to school beyond elementary school. Future Connect helped me get started because I didn’t know anything about going to college. Before I attended PCC, I never knew how intelligent I was. I always told myself that I was not good enough for school. Now at PCC, I am on my way to success.”—Fernando Serralta Poox

“The Future Connect program is the only reason I am in college. I had tried contacting other schools, desperate to get enrolled. I was saved by a spunky and driven beacon of light, my awesome [Future Connect] success coach.”—Denae Miller



FOCUSES ON STUDENTS WHO NEED IT THE MOST



ARE LOW-INCOME

56%

have a household income less than \$20K

83% will be the first in their families to complete college

70% are students of color

AND ACHIEVES SUCCESS



OF FUTURE CONNECT STUDENTS CONTINUE ON TO THEIR SECOND YEAR OF COLLEGE.

Students who continue to have an average GPA of 2.8



THIS IS MORE THAN



THE 20% SUCCESS RATE of college students from similar backgrounds who don’t receive these services.



BE PART OF THE SOLUTION

The problem of low college attainment in our community cannot be solved by one institution alone. Future Connect is an innovative public-private partnership that brings together local government, area businesses, private foundations, school districts, individuals, community organizations and the college.

PCC and donors to the PCC Foundation provide half the cost of the program, which is then matched by the Cities of Beaverton, Hillsboro and Portland.

FROM SOME OF OUR FUNDERS

“Meyer Memorial Trust is a significant funder of PCC’s Future Connect program because it helps youth from diverse racial, cultural and socioeconomic backgrounds succeed in higher education, making our community better for all, a high priority for our foundation.”

– Meyer Memorial Trust, Doug Stamm

We are steadfast supporters of the college and have seen firsthand the power and impact of Future Connect to change students’ lives. There is no greater calling, or reward, than to see these young people flourish.

– Max & Carol Lyons,
Hillsboro Aviation

PGE Foundation’s commitment to Future Connect comes from our desire to give first-generation, low-income college students the support and skills they need to succeed at family-wage skilled trades jobs available at companies like Portland General Electric.

– Carole Morse, PGE Foundation

Transform the lives of our region’s disadvantaged youth and create the educated, thriving region we want to be—through the power of education at PCC.

When you make a gift to the PCC Foundation for Future Connect students, the Cities of Beaverton, Hillsboro and Portland will double your gift as part of a generous matching challenge, up to \$580,000 each year.

Your contribution is essential to helping the next generation of students achieve success. For an investment of just \$2,000, you get a student through a year of college in this innovative, results-oriented program. For \$4,000 you play an integral part in their achieving an associate’s degree. That’s real ROI.



Change lives through Future Connect. Learn more about the PCC Future Connect program and make a donation.

Call 📞 971.722.4382 or visit: 🌐 www.pcc.edu/foundation

Student Stories



MARIUS' STORY

MARIUS IBUYE is a refugee of war-torn Congo who left Africa and emigrated to the U.S. to pursue a better life for himself and his family. He believes the Future Connect program guided him to where he is today: an Oregon State University student.

With assistance from dedicated success coaches who mapped out a plan and stood by ready to help when he found himself overwhelmed with the entire college application process, Ibuye, a 2011 David Douglas High School graduate, is reaching his educational goals.

"I really enjoyed all of my classes at PCC and the instructors were inspiring, encouraging and supportive. It wasn't only about getting good grades but also finding new ways to learn the class material," said Ibuye, who hopes to study in the College of Pharmacy at OHSU once he earns a bachelor's degree.

One major lesson he learned from Future

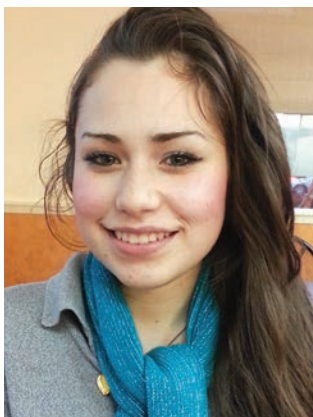
Connect was the importance of regularly meeting with instructors and other college support staff who took time to answer questions and give advice about transferring to OSU.

Once he completes his academic work, Ibuye hopes to become a pharmacist in Portland near his family.

"And now Future Connect coaches are also part of my family," he said.

"Not having the support of Future Connect at PCC and going straight to a four-year university would have been crazy. I feel I'm well prepared and now I can fly at OSU."

MARIUS IBUYE, Future Connect alum and current OSU student



DAISY'S STORY

AS SHE THOUGHT about life after high school graduation, Daisy Toledo considered a full-time job in food service as her best opportunity. Then she heard a counselor talk about Future Connect and she suddenly saw another path open before her.

"I never expected to have enough money to go to college," said the Century High School graduate. "The more I learned the more I realized that this is the perfect program for me."

At first she worried about juggling school, studying and a job but Future Connect coaches helped her create a time management plan. While her schedule is busy she's thriving.

She's also become a more assertive, confident individual who knows how to meet her educational goals. With a 4.0 grade point average during her first term in college she's already researching four-year universities and careers

in the medical field.

Now Daisy is sharing her talents with others. As a member of the Oregon Leadership Institute at PCC's Rock Creek Campus she's working with students on volunteerism and fundraising. She sees it as a good opportunity to network and learn new skills such as public speaking.

"I talk to my friends about Future Connect. I tell them that they can reach their goals because there is a lot of support," said Toledo.

"The classes have been challenging but I'm persistent and my success coach motivates me every day. I believe I have what it takes to be successful in college and to be successful in life."

DAISY TOLEDO, Future Connect student

“When I was in high school, I did not really have anyone who believed in me. Everyone in my family told me I could not make it, I would not graduate but I did. Because of Future Connect, I am able to pursue my dream.”

—**MEYYIEN SAEPHARN**, *Future Connect Student*

Hoffman Construction knows the value of supporting access to education. That’s why we support PCC’s Future Connect program. Ensuring these students succeed is vital to the growth and prosperity of our region’s economy and the local communities where they live and work.

—**WAYNE DRINKWARD**, *Hoffman Construction Company*

“We believe in students until they are ready to believe in themselves.”

—**JOSE ESPARZA**, *Future Connect Success Coach*



To learn more about the PCC Future Connect program

PCC  **Foundation**

call  971.722.4382 or visit:  www.pcc.edu/foundation

12000 S.W. 49th Ave., Portland, OR 97219

P.O. Box 19000, Portland, OR 97280-0990



**Portland
Community
College**

