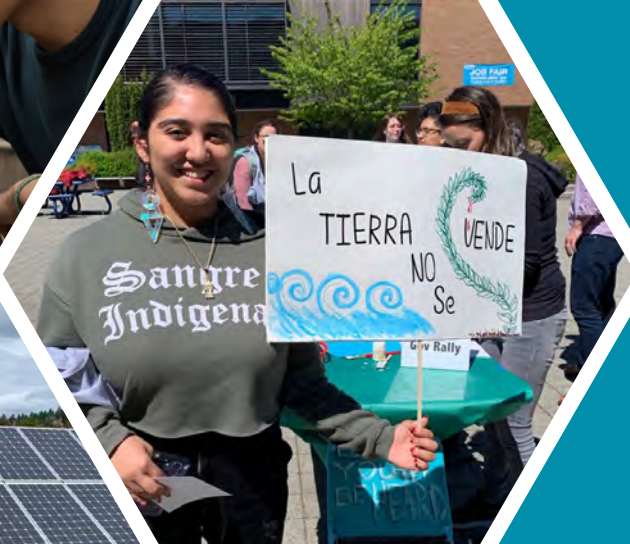




**Portland  
Community  
College**



# 2021 Climate Action Plan

**Resiliency,  
Equity and  
Education for a  
Just Transition**





# Letter from President Mitsui

The year 2020 was a lesson in the interconnectedness of everything. While COVID-19 dominated our public conversation, snippets of our year illustrated how our social, economic and environmental fabric are woven together. In the most devastating way, we experienced how COVID-19 disproportionately affects those who are already our society’s most vulnerable and historically marginalized. And in the backdrop of this, public health experts continue to note the vicious cycle created by environmental racism, wherein disproportionate impacts are exacerbated by a global threat. The destruction wrought from the 2020 wildfire season further highlighted how climate change is also disproportionately impacting society’s most vulnerable and historically marginalized communities, both globally and here at home. It is clear that the problems we face are systemic and require holistic solutions. We are experiencing the impacts of climate change now and we must mitigate future harm, while doing so equitably.

Globally we all have an obligation to address the climate crisis and work towards meeting the United Nations’ 17 goals for the 2030 Agenda for Sustainable Development. PCC has led in this effort locally, by co-founding the Greater Portland Sustainability Education Network (GPSEN). It is one of 166 regional centers for expertise on education for Sustainable Development in the world and is acknowledged by United Nations University. Further, we’ve advanced the global conversation in higher education climate action as a member of the America Is All In network and through participation in two UN Climate Conferences. We’ve received accolades for our efforts, including the 2017 Climate Leadership Award for two-year institutions from Second Nature, and have been recognized as a top performer among community colleges reporting to AASHE’s STARS. We need to continue to take bold action to confront the global climate crisis in support of a just energy and resources transition. With this climate action plan update, PCC will continue to lead by example locally, regionally and globally. I am proud of PCC for taking action to implement our vision of climate justice, based on an equity-focused transition to a resilient, thriving society with net zero greenhouse gas emissions that addresses historical injustices.

This Climate Action Plan was created by dedicated students, staff, faculty and community members during the global pandemic in 2020 and demonstrates PCC’s ability to adapt and be agile while remaining true to our mission. In this plan, we have updated our commitment to achieving carbon neutrality in our own greenhouse gas emissions from 2050 to 2040, which recognizes the global climate justice implications of delayed action for island and coastal communities. This climate action update outlines how PCC will provide sustainability education, support green workforce development, advance community climate justice efforts and train tomorrow’s leaders while working towards resilient, carbon-neutral operations over the next five years. It strives to lift student voices in the regional discussion on climate action, while affirming PCC’s global commitment to Article 12 in the Paris Agreement to enhance climate change education, training, public awareness, public participation and public access to information. Further, each of the four focus areas align with the college’s new Strategic Plan, with equitable student success as the foundation.



PCC President Mark Mitsui

We have less than ten years to limit the most extreme impact of climate change through collective action. This Climate Action Plan keeps us on the path to lead the global community of higher education in climate justice action. While certainly ambitious, this plan is grounded in realistic possibilities and we will work collaboratively across our campuses and centers to implement this climate action plan. The global pandemic has taught us many things—resiliency, creativity and innovation. We learned from the pandemic that we are capable of amazingly agile and equitable change. Our response to the climate crisis shall be just as agile and equitable.

*Mark Mitsui*

# Land Acknowledgement

The campuses and centers of Portland Community College rest on the traditional village sites of Multnomah, Kathlamet and Clackamas bands of the Chinook, Tualatin Kalapuya, Molalla and many other tribes who made their homes along the Columbia River. Multnomah is a band of Chinooks that lived in this area.

We thank the descendants of these tribes for being the original stewards and protectors of these lands since time immemorial. We also acknowledge that Portland, Oregon has one of the largest Urban Native American populations in the U.S. with more than 380 federally recognized tribes represented in the Urban Portland Metropolitan area. We also acknowledge the systemic policies of genocide, relocation and assimilation that still impact many indigenous/Native American families today.

We are honored by the collective work of many Native Nations, leaders and families who are demonstrating resiliency, resistance, revitalization, healing and creativity. We are honored to be guests upon these lands. Thank you, and thanks also to PCC colleagues at Portland State University Indigenous Nations Studies Program for crafting this acknowledgement.

*The intent of this land acknowledgment is to name the history of this land, and by doing so bring attention to the many different ways PCC communities have arrived to this land and how this history has shaped the current climate emergency. We acknowledge that this is stolen land that has been degraded by people of colonial cultures and practices, and that PCC must address colonialism to work towards climate justice.*

*Colonialism remains embedded in many climate change solutions; we acknowledge that the power coming from the large hydroelectric dams in Oregon come from stolen land and that the dams continue to do harm to the river’s ecosystem. The State of Oregon has made it clear in its renewable portfolio standard that large hydroelectric sources are not considered renewable. The renewable energy credits PCC has purchased to date come from both wind sources along the Columbia River and a mixture of solar projects that are located on stolen land.*

*By bringing attention to this history, PCC brings accountability to its climate justice work. It is an active commitment that includes supporting Indigenous sovereignty; promoting honest dialogue around race, racism and colonization; and action to end systemic oppression by interrupting white supremacy culture in the many ways it manifests, degrades and dehumanizes.*





# Executive Summary

PCC’s 2021 Climate Action Plan: Resiliency, Equity and Education for a Just Transition is the college’s five-year roadmap towards climate justice.

Unified under a shared vision, PCC’s 2021 Climate Action Plan establishes a new carbon neutrality goal of 2040 and builds off an impressive amount of work done to date to outline clear pathways for equity-focused climate action to be woven throughout operations, academics, student engagement and future planning.

This Climate Action Plan is part of the college’s integrated planning efforts in support of PCC’s mission to support student success by delivering access to quality education while advancing economic development and promoting sustainability in a collaborative culture of diversity, equity and inclusion.

The planning process was led by PCC’s Sustainability Department with support from a diverse task force that included more than 80 individuals from the college community. The goals of this planning effort were to:

- center equity throughout the entire process
- foster inclusive stakeholder engagement
- use science-based targets to create actionable steps towards GHG mitigation
- align with previous and ongoing campus planning efforts, as well as with broader efforts and commitments in the region

The development of this Climate Action Plan reflects PCC’s commitment to advancing diversity, equity, inclusion and social justice across the college and within the communities it serves. Equity was

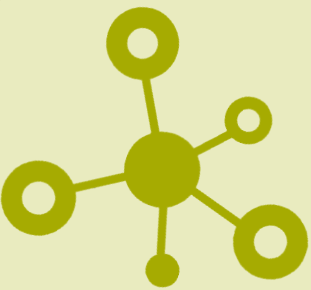
interwoven throughout the planning process and centered in the resulting goals and strategies through the use of a PCC Climate Action Equity Guide and equity decision-making tools.

In the development of this plan, PCC used science-based targets to update its carbon neutrality goal to 2040. In support of climate justice, PCC reduction targets are aligned with the global need for GHG emissions reduction that will keep global warming below a 1.5°C increase from pre-industrial levels. This CAP also integrates resiliency to address the global climate emergency. Resiliency emphasizes both mitigation and adaptation to climate change and calls for equity-focused responses to climate change since the consequences of increasing global temperatures disproportionately impact populations that have contributed least to the climate crisis locally and globally.

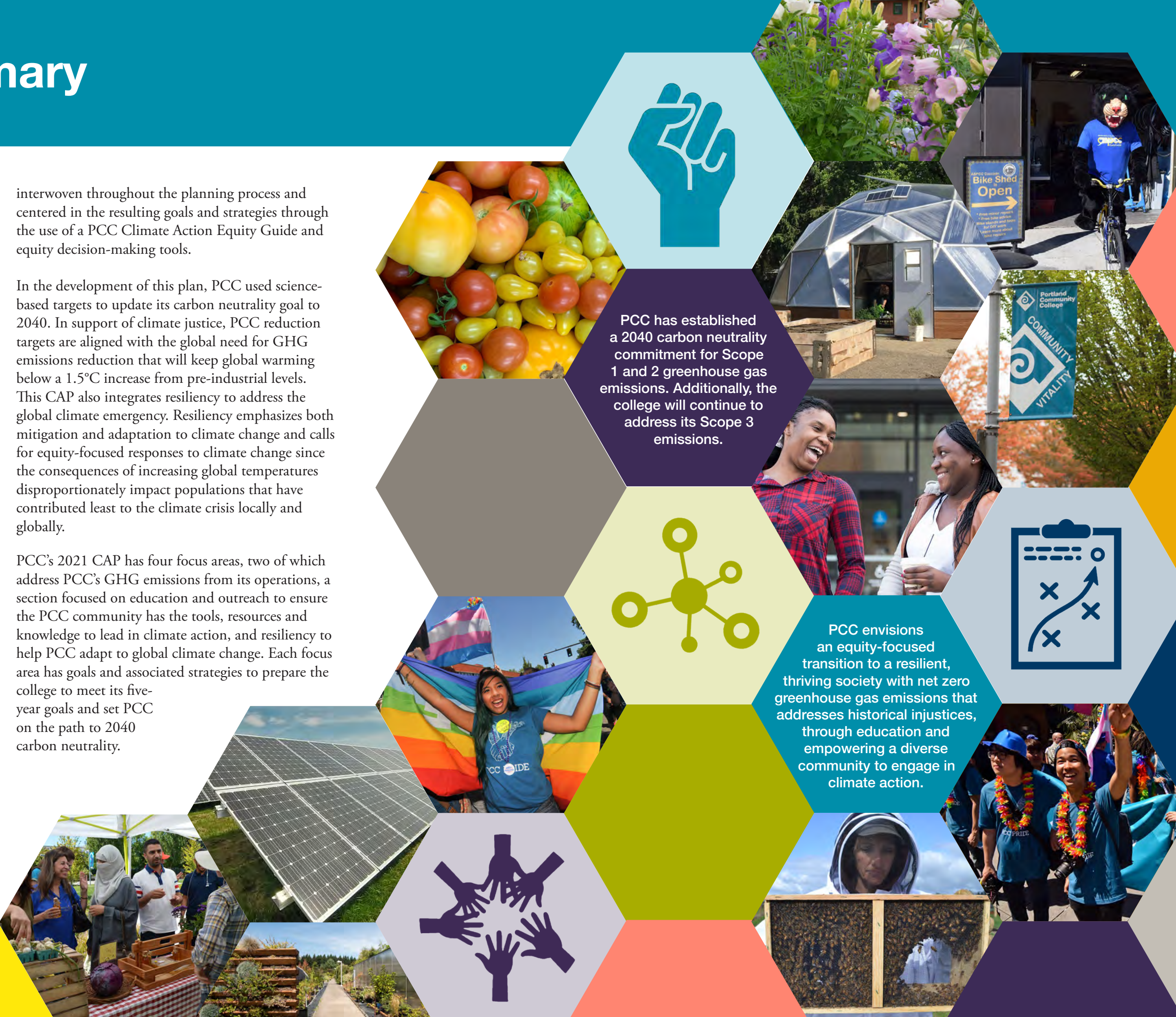
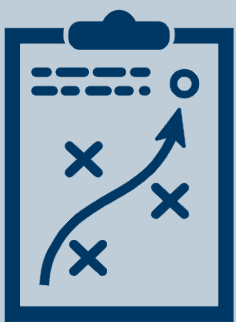
PCC’s 2021 CAP has four focus areas, two of which address PCC’s GHG emissions from its operations, a section focused on education and outreach to ensure the PCC community has the tools, resources and knowledge to lead in climate action, and resiliency to help PCC adapt to global climate change. Each focus area has goals and associated strategies to prepare the college to meet its five-year goals and set PCC on the path to 2040 carbon neutrality.



PCC has established a 2040 carbon neutrality commitment for Scope 1 and 2 greenhouse gas emissions. Additionally, the college will continue to address its Scope 3 emissions.



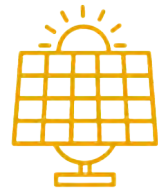
PCC envisions an equity-focused transition to a resilient, thriving society with net zero greenhouse gas emissions that addresses historical injustices, through education and empowering a diverse community to engage in climate action.





# PCC 2021 Climate Action Plan

# Summary of Goals



## Scopes 1 & 2

### GOAL 1 ENERGY REDUCTION

By 2026, PCC has reduced college energy consumption per square foot by 60% below 2006 levels.

### GOAL 2 RENEWABLE ENERGY

By 2026, PCC has reduced its Scopes 1 and 2 greenhouse gas emissions by 75% below 2006 levels through decarbonization of its energy sources.

### GOAL 3 FLEET EMISSIONS REDUCTION

By 2026, PCC has reduced college fleet fuel emissions by 25% below 2006 levels.



## Scope 3

### GOAL 1 SUSTAINABLE TRANSPORTATION AND TRAVEL

By 2026, PCC has reduced commuter and business travel greenhouse gas impacts per full-time equivalent by 20% below the 2006 baseline.

### GOAL 2 SUSTAINABLE PROCUREMENT

By 2026, PCC purchaser and vendor contracts align with PCC's diversity, equity and inclusion, sustainability and climate action goals and values to ensure long-term viability of PCC's enterprise.

### GOAL 3 WATER REDUCTION

By 2026, PCC has reduced the college's water consumption per square foot by 10% below 2019 levels.

### GOAL 4 WASTE DIVERSION

By 2026, PCC has reduced greenhouse gas emissions from solid waste by 50% below 2006 levels.



## Education & Outreach

### GOAL 1 SUSTAINABILITY AND CLIMATE JUSTICE CURRICULUM

By 2026, all students are supported and encouraged to engage with sustainability and climate justice education through student-centered curricular and co-curricular offerings that are equity-conscious.

### GOAL 2 OUTREACH AND ENGAGEMENT

By 2026, the college community is supported with outreach and engagement opportunities to develop the skills, knowledge and practices necessary to lead a life active in sustainability and climate justice.

### GOAL 3 COMMUNITY CONNECTION

By 2026, PCC is an anchor institution to advance sustainability and climate justice in the broader community, with a focus on engagement with Black-, indigenous- and people-of-color-led initiatives and frontline community priorities.



## Resiliency

### GOAL 1 ASSESSMENT AND PLANNING

By 2026, PCC has completed a college resiliency assessment on the vulnerabilities and hazards associated with climate change to ensure the long-term viability of our enterprise. This assessment highlights threats to our frontline and vulnerable communities and centers on those communities.

### GOAL 2 SUPPORT AND RESOURCES

By 2026, all departments and campuses at PCC have equitable access to ongoing financial support and resources for sustainability across all departments and campuses at PCC to ensure long-term viability.

### GOAL 3 ENERGY RESILIENCY

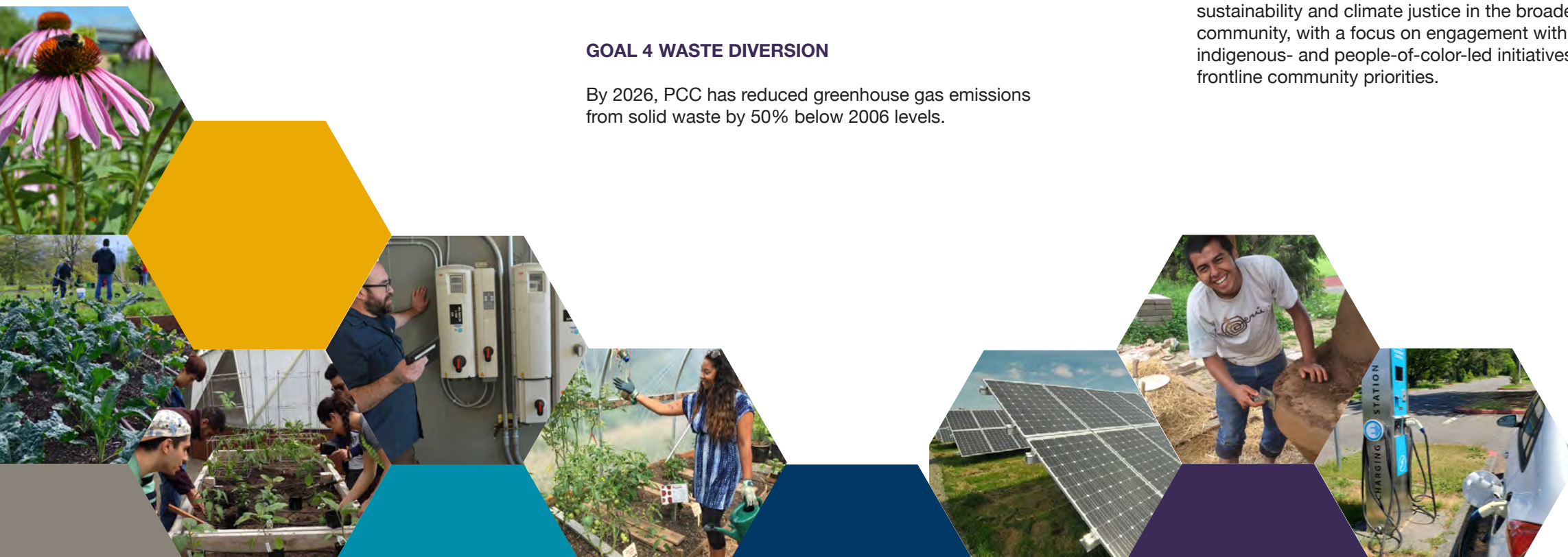
By 2026, PCC has developed energy resiliency strategies to reduce impact from climate change in emergency scenarios and be agile in the face of change.

### GOAL 4 ECOLOGICAL HEALTH AND WELLBEING

By 2026, PCC has incorporated design criteria that promote habitat stewardship and the wellbeing of students, staff, faculty and the neighborhoods the college inhabits. These criteria contribute to healthy learning and working environments, ecosystem health and a sense of belonging for all.

### GOAL 5 ALIGNMENT AND PLANNING

By 2026, PCC has aligned its climate action and resiliency efforts with planning efforts both within PCC and across the region to cultivate sustainability and climate justice with service toward frontline and vulnerability communities as a guidepost.





To review additional resources for the 2021 Climate Action Plan,  
visit the PCC Climate Action Plan website at [pcc.edu/climateaction](https://pcc.edu/climateaction)  
or email [sustainability@pcc.edu](mailto:sustainability@pcc.edu).

