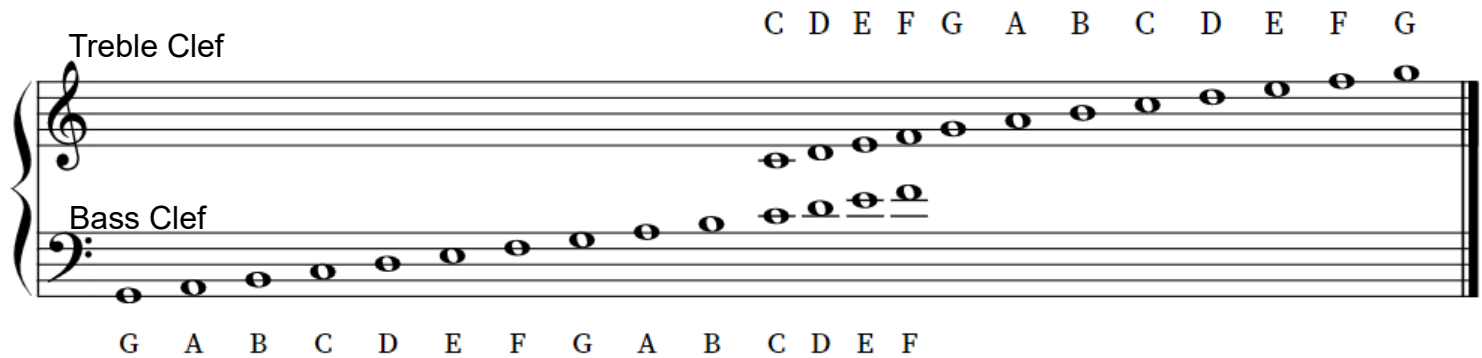


The Grandstaff



4 spaces 5 lines in each clef

Bass Clef Lines: Great Big Dragons Fly Away

Bass Clef Spaces: All Cows Each Grass

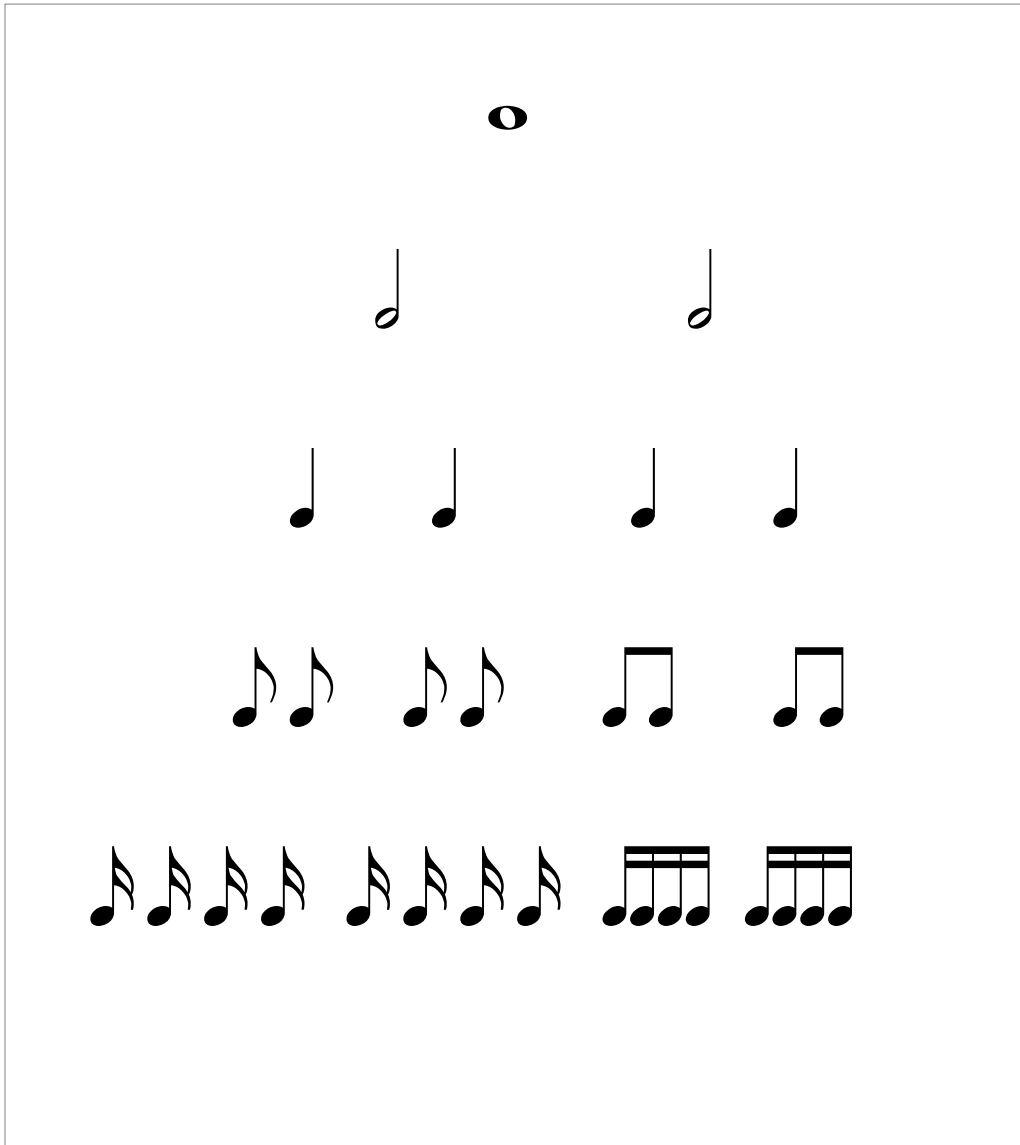
Treble Clef Lines: Every Good Boy Deserves Fudge

Treble Clef Spaces: FACE

Practice identifying
notes with
musicards.net

Rhythm Tree

Rhythm is Math



Whole note = 4 beats

Half note = 2 beats

Quarter note = 1 beat

Eighth note = $\frac{1}{2}$ beat

Sixteenth note = $\frac{1}{4}$ beat

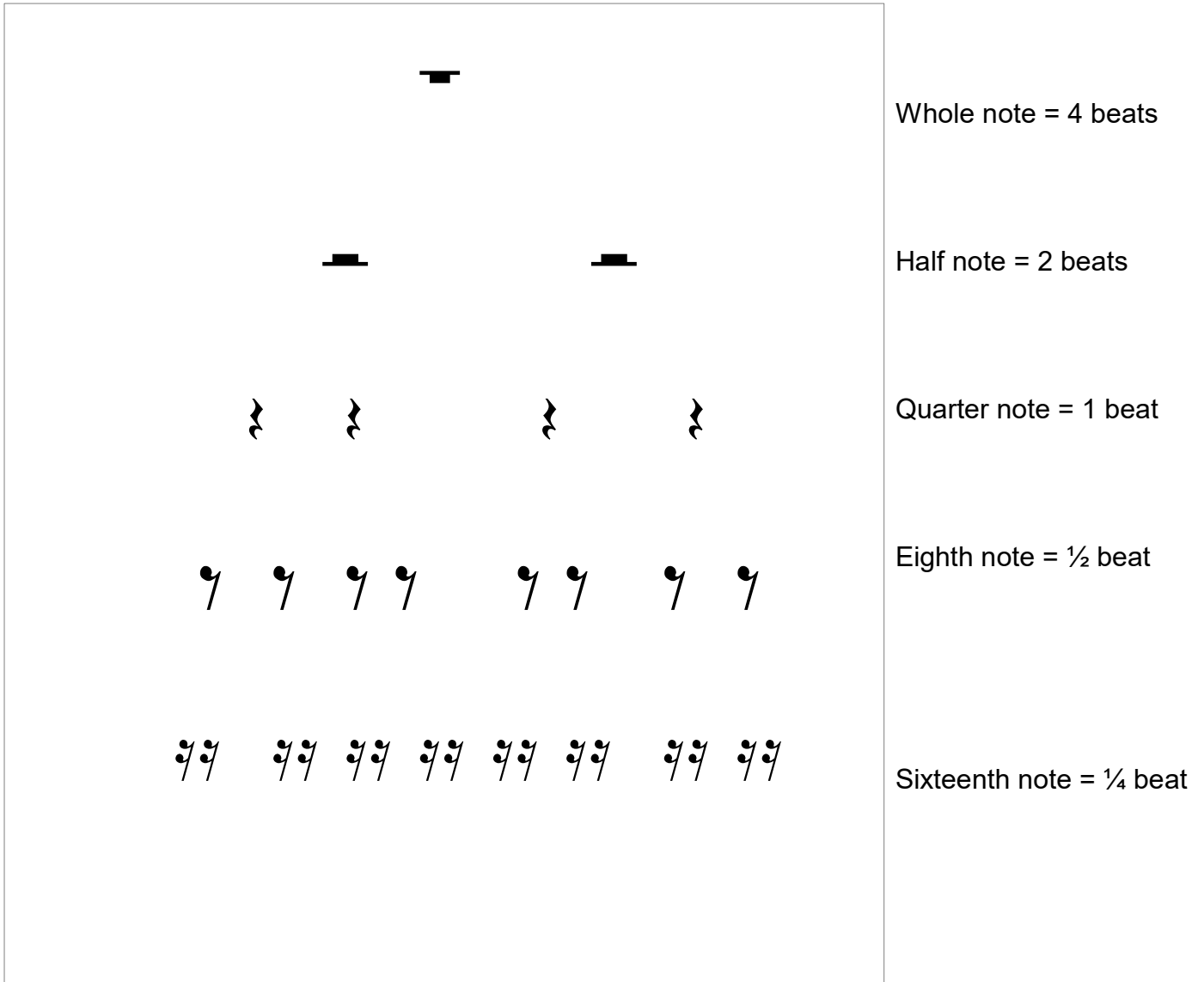
Pulse is like the heart beat of the music, it remains constant.

Rhythm is the division of the pulse.

Using a metronome when practicing music will help to keep the pulse steady.

Rhythm Tree

Rhythm is Math



Pulse is like the heart beat of the music, it remains constant.

Rhythm is the division of the pulse.

Using a metronome when practicing music will help to keep the pulse steady.

Rhythm: The Dot

The dot after a note add $\frac{1}{2}$ the value of the note preceding it

A collection of musical notation examples for dotted notes, arranged in four rows. The first row shows a single whole note with a dot. The second row shows a single half note with a dot. The third row shows two quarter notes with dots, followed by two eighth notes with dots. The fourth row shows four eighth notes with dots.

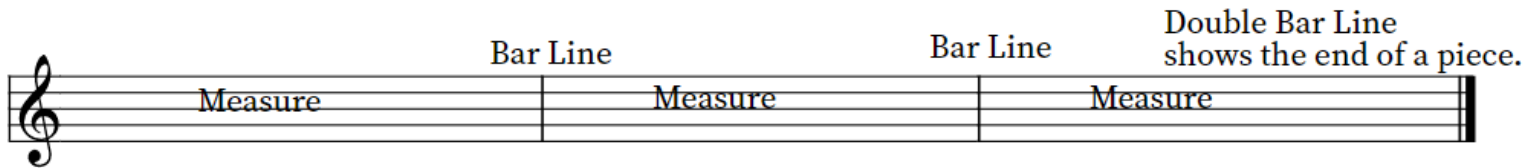
Whole note dot = $4 + 2$
beats

Half note dot = $2 + 1$ beats

Quarter note dot = $1 + \frac{1}{2}$
beat

Eighth note dot = $\frac{1}{2} + \frac{1}{4}$
beat

Measures



A musical staff with a treble clef, divided into three measures by single bar lines. The first measure is labeled "Measure", the second "Measure", and the third "Measure". Above the staff, the text "Bar Line" is placed above the first and second bar lines. Above the third bar line, the text "Double Bar Line shows the end of a piece." is written.

Repeat Signs



Two musical staves with treble clefs. The first staff contains a sequence of six quarter notes, followed by a repeat sign (two dots and a bracket) at the end. Below the staff, the text "Go Back to the beginning" is written. The second staff contains a sequence of three quarter notes, followed by a repeat sign, then another sequence of six quarter notes, followed by a second repeat sign.

Time Signatures

The top number show the number of beats in each measure

4

The bottom number shows what kind of note gets one beat

4

Simple Time



C common time and is the same thing as 4/4



Ties and Slurs

Tie: Curved line on same note Slur: Curved line on different notes



A tie adds the value of the two tied notes

$$\text{♩} + \text{♩} = 4$$

A slur indicates the music should be played or sung smoothly. In singing it also indicates that a sung syllable should be applied to the notes with the slur.

A musical score in 3/4 time, consisting of two staves (treble and bass clefs). The treble staff contains three measures. The first measure has a whole rest. The second measure has a quarter note G4 with a diagonal line pointing to it labeled 'Pick Up'. The third measure has a quarter note G4, a quarter note A4, and a quarter note B4, all grouped under a slur. The lyrics 'A - maz - ing grace' are written below the notes. The bass staff contains three measures, each with a whole rest.