
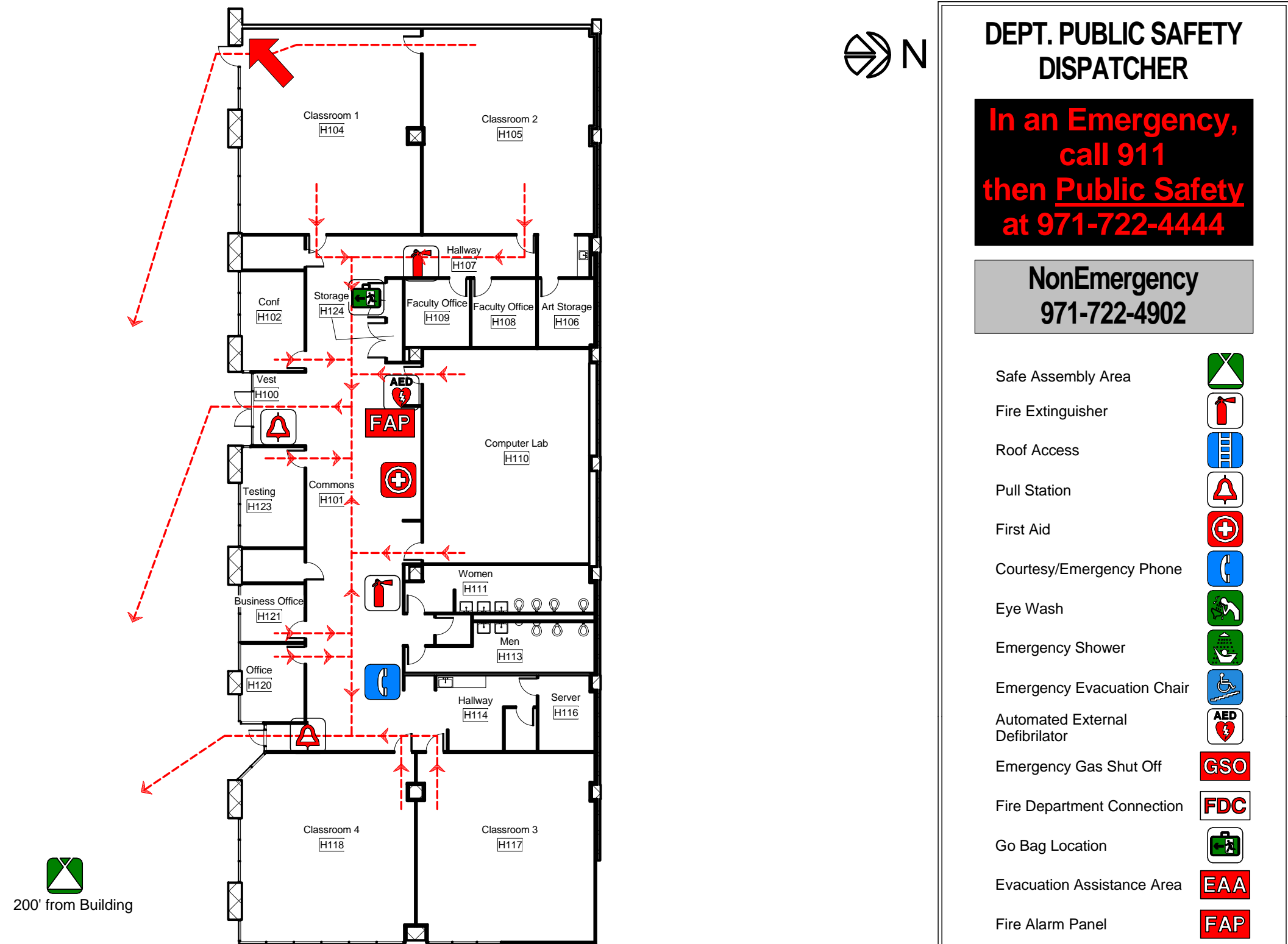


# HC - Hillsboro Center First Floor Plan

You are here 

# Emergency Procedure Evacuation Plan




**DEPT. PUBLIC SAFETY  
DISPATCHER**

**In an Emergency,  
call 911  
then Public Safety  
at 971-722-4444**

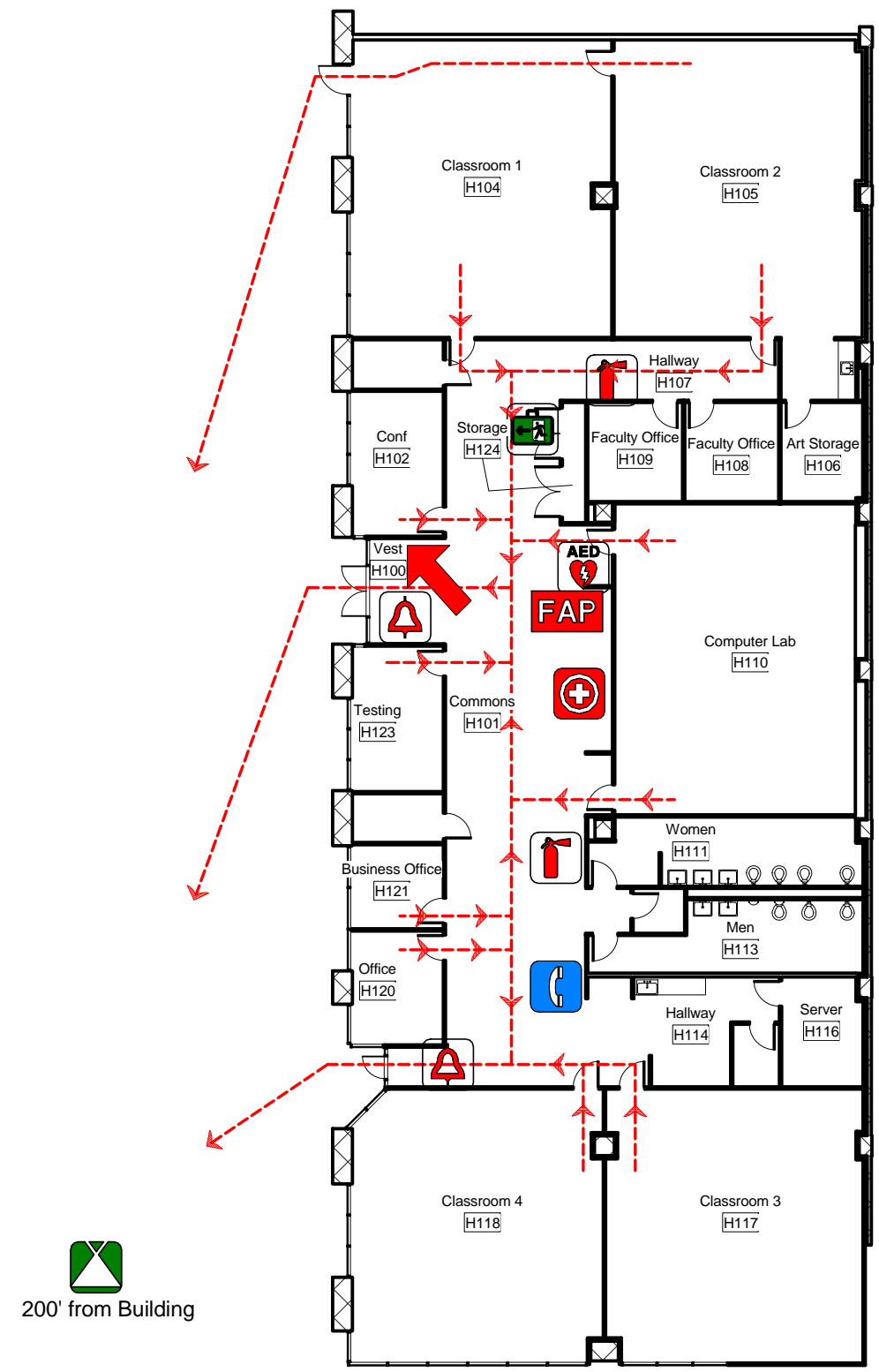
**NonEmergency  
971-722-4902**

- Safe Assembly Area 
- Fire Extinguisher 
- Roof Access 
- Pull Station 
- First Aid 
- Courtesy/Emergency Phone 
- Eye Wash 
- Emergency Shower 
- Emergency Evacuation Chair 
- Automated External Defibrillator 
- Emergency Gas Shut Off 
- Fire Department Connection 
- Go Bag Location 
- Evacuation Assistance Area 
- Fire Alarm Panel 

# HC - Hillsboro Center First Floor Plan

You are here 

# Emergency Procedure Evacuation Plan




**DEPT. PUBLIC SAFETY  
DISPATCHER**

**In an Emergency,  
call 911  
then Public Safety  
at 971-722-4444**

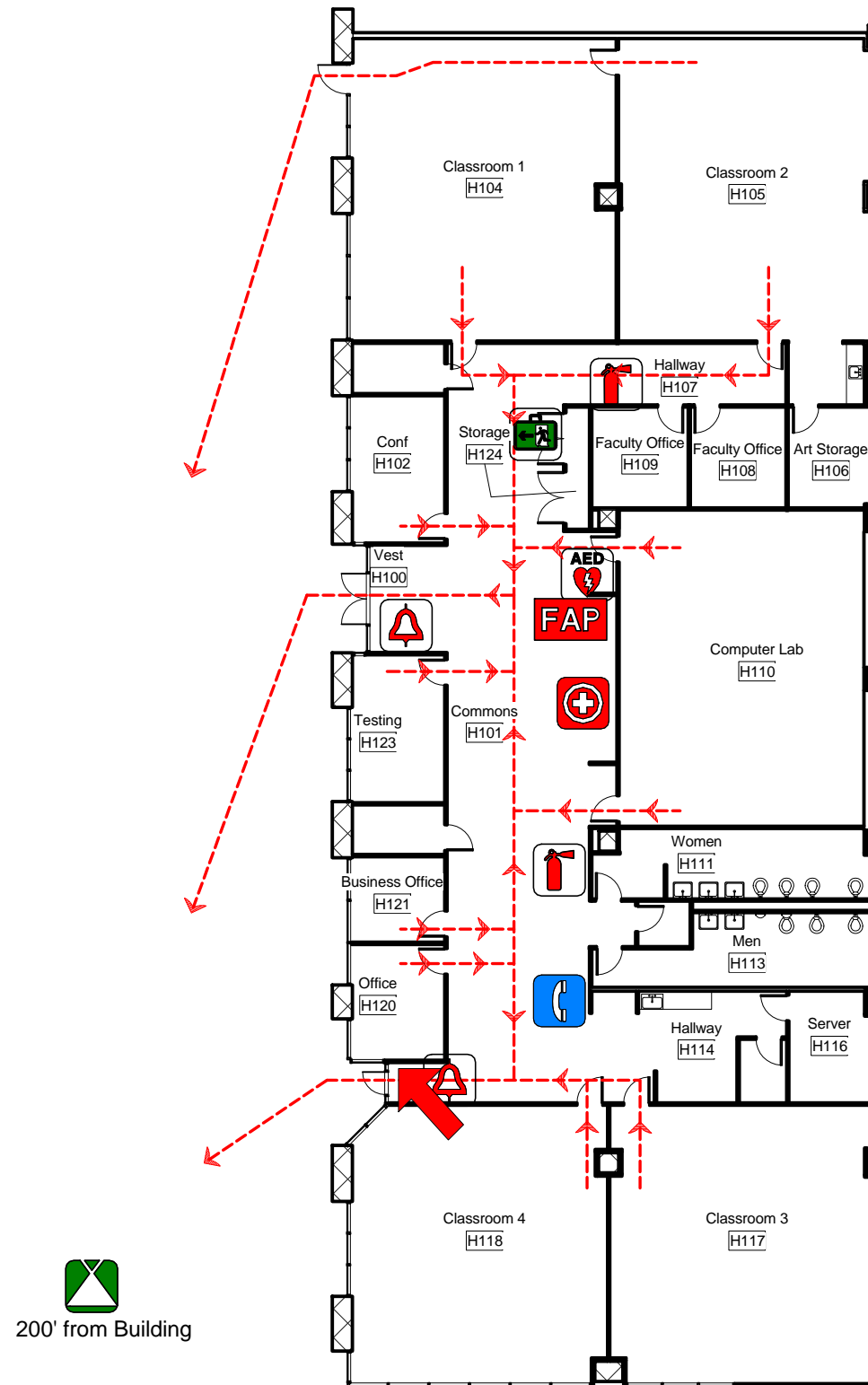
**NonEmergency  
971-722-4902**

- Safe Assembly Area 
- Fire Extinguisher 
- Roof Access 
- Pull Station 
- First Aid 
- Courtesy/Emergency Phone 
- Eye Wash 
- Emergency Shower 
- Emergency Evacuation Chair 
- Automated External Defibrillator 
- Emergency Gas Shut Off 
- Fire Department Connection 
- Go Bag Location 
- Evacuation Assistance Area 
- Fire Alarm Panel 

# HC - Hillsboro Center First Floor Plan

You are here 

# Emergency Procedure Evacuation Plan



**DEPT. PUBLIC SAFETY  
DISPATCHER**

**In an Emergency,  
call 911  
then Public Safety  
at 971-722-4444**

**NonEmergency  
971-722-4902**

- Safe Assembly Area 
- Fire Extinguisher 
- Roof Access 
- Pull Station 
- First Aid 
- Courtesy/Emergency Phone 
- Eye Wash 
- Emergency Shower 
- Emergency Evacuation Chair 
- Automated External Defibrillator 
- Emergency Gas Shut Off 
- Fire Department Connection 
- Go Bag Location 
- Evacuation Assistance Area 
- Fire Alarm Panel 