

Academic Year 2017 - 2018

Dear Prospective Early Childhood Education Student,

We are pleased that you have shown an interest in the Early Childhood Education (ECE) Program at Portland Community College. The ECE program at PCC provides a high quality and practical learning experience and is one of only two nationally accredited early education programs on the west coast.

Enclosed you will find materials about our Associates of Applied Science Degree, Career Pathway Certificate in Early Childhood Education, and Career Pathway Child Care Aide Certificate. Each credential provides you the educational foundation and practical experience needed to effectively work with children and families in a wide variety of settings.

After you review the materials, please make arrangements to speak with a program advisor at your earliest convenience (information contained in this packet), so that we may assist you in planning your future career in Early Education and Family Studies. Our advisor conducts advising sessions and will help answer any questions you have regarding the program requirements.

As you plan your course of study and educational goals, please know that Portland Community College has a transfer agreement with Portland State University for those students planning to achieve their Bachelor's Degree in Child & Family Studies as well as an agreement with Southern Oregon University's Child Development Bachelor's Degree Program.

We hope you find the enclosed information useful in planning the next step on your academic journey. If you need further assistance, please do not hesitate to contact our Academic Advisor, Doree Dennis at [doree.dennis@pcc.edu](mailto:doree.dennis@pcc.edu) or 971-722-4707. We're all about your future. **Get started on your ECE credential today!**

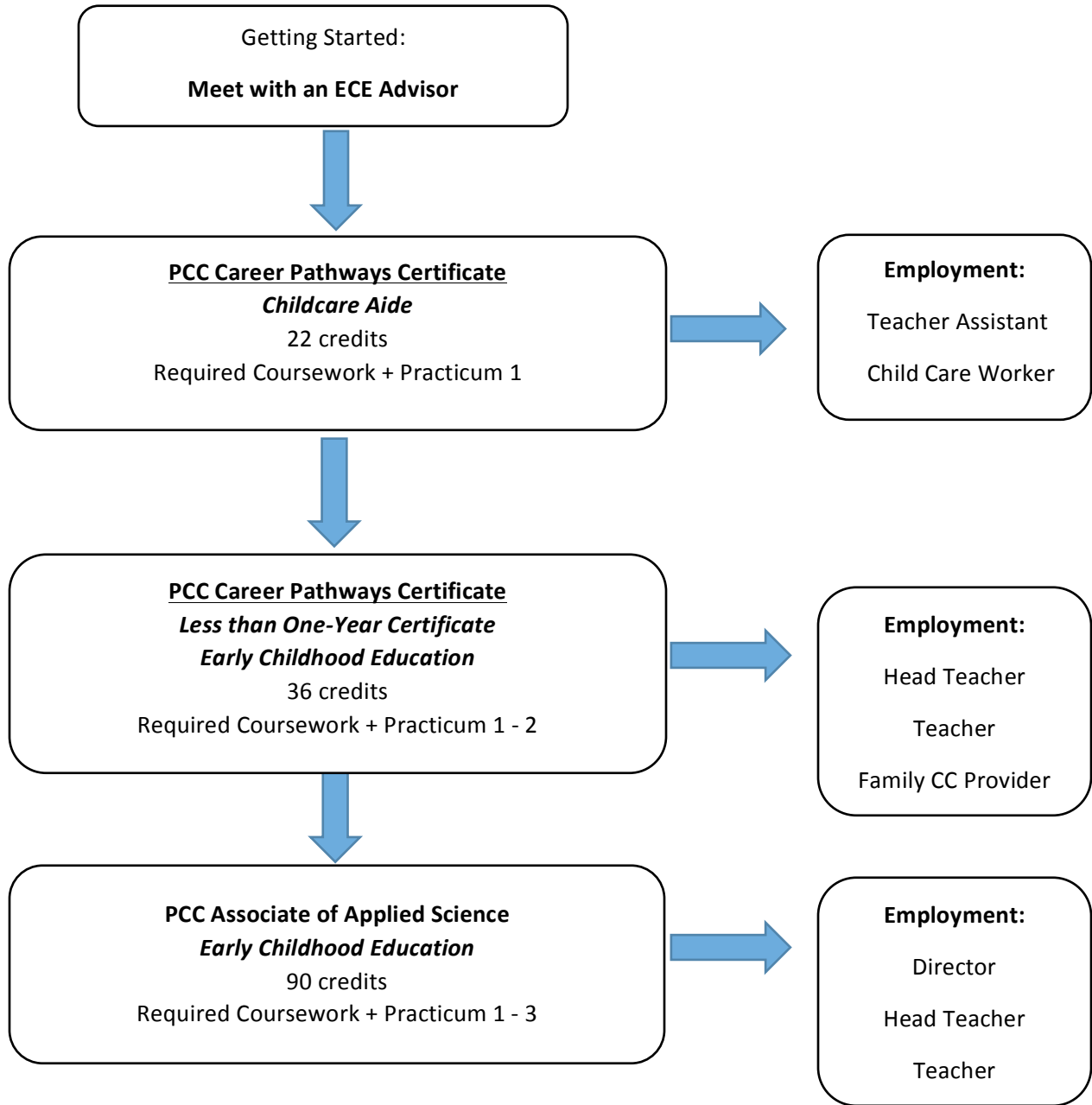
Sincerely,

Andrew Garland-Forshee, Ph.D., HS-BCP  
Faculty Department Chair, Child and Family Studies  
[Andrew.forshee15@pcc.edu](mailto:Andrew.forshee15@pcc.edu)  
971-722-4027



Portland Community College

Early Childhood Education Career Pathway



- A completed **Childcare Aide Career Pathway Certificate** exceeds Oregon Office of Child Care requirements for teaching assistants in licensed child care centers.
- A completed **Early Childhood Education Career Pathway Certificate** meets Oregon Office of Child Care requirements for teachers in licensed child care centers.
- A completed **AAS degree in Early Childhood Education** meets National Association for the Education of Young Children (NAEYC) requirements for teachers in infant, toddler, preschool, and school-age programs.

# Child and Family Studies Career Pathway

## Child Care Aide Career Pathway Certificate

22 credits

Required Coursework

Practicum 1  
(Student Teaching)

A completed Child Care Aide Certificate exceeds Oregon Child Care Division requirements for aides and teaching assistants in licensed child care centers.



## Early Childhood Career Pathway Certificate

39 Credits

Required Coursework

+

Practicum 1 + 2  
(Student Teaching)

A completed Early Childhood Certificate meets Oregon Child Care Division requirements for teachers in licensed child care centers.



## Associate of Applied Science in Early Education and Family Studies

92 Credits

Required Coursework

+

Practicum 1 + 2 + 3  
(Student Teaching)

A completed AAS degree in ECE meets the National Association for the Education of Young Children (NAEYC) requirements for teachers in Infant & Toddler, Preschool, and School Age Programs.

### Early Childhood Education (ECE) Program Year at a Glance 2017-2018

	Fall 2017	Winter 2018	Spring 2018	Summer 2018
<b>PRACTICUM (AM/PM)</b>	ECE 133, 134, 135 ECE 131A-C (PET)	ECE 133, 134, 135 ECE 131A-C (PET)	ECE 133, 134, 135 ECE 131A-C (PET)	ECE 135 ECE 131A-C (PET)
<b>PM (AFTERNOON)</b>	ECE 130A-B Practicum 1/2 Seminars ECE 130C Practicum 3 Seminar	ECE 130A-B Practicum 1/2 Seminars ECE 130C Practicum 3 Seminar ECE 196 Teaming & Communication	ECE 130A-B Practicum 1/2 Seminars ECE 130C Practicum 3 Seminar	ECE 130C Practicum 3 Seminar
<b>EVENINGS</b>	ECE 120 Intro (*) ECE 232 Science & Math ECE 196 Teaming & Communication  ECE 130A-B PET Seminar	ECE 120 Intro (*) ECE 200 The Professional [1x yr] ECE 232 Science & Math ECE 124 EOv (*)  ECE 130A-B PET Seminar	ECE 120 Intro (*) ECE 224 Mult. Cult. Pract. II [1x yr]  ECE 130A-C PET Seminar	ECE 130A-C PET Seminar ECE 130A-C Seminar
<b>WEEKEND (SATURDAY)</b>	ECE 199A Intro to Montessori [E][6,8] ECE 124 EOv (*) [1, 3, 5, 7, 9] FN 199F Farm to PS [E] [2,4]	Elective?	ECE 199B Creative Arts [E] ECE 123p Env/Curr PS (***)	
<b>ONLINE</b>	ECE 120 Intro (D2L) (*) HEC 201 Family Part (D2L) (**) HEC 226 Child Dev (D2L) ECE 122i Env/Curr IT (D2L) (***) ECE 234 Child w/ Sp Needs (D2L) ECE 123p Env/Curr PS (***) ECE 121 O&G I (D2L) (*) HEC 212 Parent-Child (D2L) [E] ECE 236 Lang. & Lit. (D2L)	ECE 121 O&G I (D2L) (*) HEC 226 Child Dev (D2L) HEC 201 Family Part (D2L) (**) ECE 221 O&G II (D2L) ECE 123p Env/Curr PS (D2L) (***) ECE 122i Env/Curr IT (***)	ECE 221 O&G II (D2L) HEC 201 Family Part (D2L) (*) ECE 234 Child w/ Sp Needs (D2L) HEC 226 Child Development (D2L) ECE 121 O&G I (D2L) (*) ECE 122i Env/Curr IT (D2L) (***) ECE 236 Lang. & Lit (D2L) HEC 212 Parent-Child (D2L) [E]	

(\*) = Prerequisite for Practicum 1  
 (\*\*) = Prerequisite for Practicum 2  
 (\*\*\*) = Prerequisite for Practicum 2 or 3  
 [E] = Department Elective  
 [1x yr] = offered only one time per year  
 [1,3,5,7,9] = Weeks offered

NOTE: All classes are subject to change