

Frequently Asked Questions

Insurance



**For extra help,
please reach out to:**

OISS Contact:

✉ oiss@pcc.edu

LewerMark Contact:

✉ lewermarksupport@lewer.com

🌐 www.lewermark.com

📞 +1-800-821-7710

🕒 6:00AM - 3:00PM (Pacific Time)

What does it cover?

Some of what is covered:

- **Doctor Appointments**
- **Telehealth**
- **Prescriptions**
- **Physiotherapy**
- **Ambulance**



Click on the laptop
to visit the page

How do I pay?

- 1 Go to the purchase portal:
lewermark.com/portlandcc
- 2 Select the academic year and
click on **"Purchase Student
Insurance"**

More info on the next page.

How do I find a provider?

- Visit the LewerMark website to **"Search for a Doctor"**.
- **Filter your search** to find a **Primary Care Physician** that adapts to your needs.
 - *Call to make sure they're taking new patients.*

Do I have to pay it every term?

Yes. While we know it's an added expense, **being in the US uninsured could be much more expensive** if you encounter any medical needs/issues.

LewerMark Chat

There's a **live chat with actual people** ready to offer you support.
An inbox is available after hours.

🕒 6:00AM - 3:00PM (Pacific Time)

📍 Chat icon on the LewerMark website

🌐 www.lewermark.com



Important Links

LewerMark's Purchase Portal

- This website is **different** than the Student Login page.
- It is dedicated to **payments only**.

⚠ **You can't pay from your Student Login page.**



Click on the laptop to visit the page

Hold

A **hold will be placed on your MyPCC account** before class registration begins. To **remove it**, you must **pay for your health insurance** through LewerMark's purchase portal.

Once it's paid, please **email the receipt to: oiss@pcc.edu**

LewerMark's Website: Student Login Page

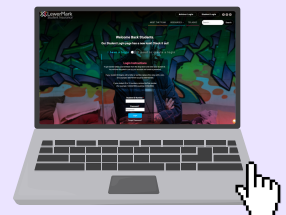
📄 Insurance Overview

💬 Support Chat

📄 Insurance ID Card

👤 Teladoc

👤 Find a Doctor



Click on the laptop to visit the page

OISS Website: Health Insurance

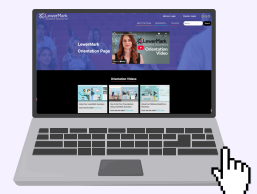
Find info about price, coverage, and much more.



Click on the laptop to visit the page

LewerMark: Orientation Page

Scroll down to find lots of orientation videos.



Click on the laptop to visit the page

Teladoc Health

This platform offers **care for non-urgent and common conditions**. Just **set up your account** on the website for access:

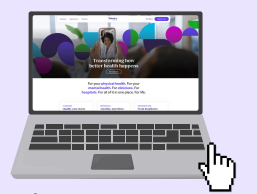
👤 Physical & Mental Health

📱 App for iOS and Android

📄 Diagnosis & Prescriptions

🕒 Same-day appointments

🕒 Online and 24/7



Click on the laptop to visit the page