

Dual Credit
Annual Report
2020-21

PCC Dual Credit



**Portland
Community
College**

Beth Molenkamp, *Dual Credit Program Manager*

Elizabeth.Molenkamp@pcc.edu

(971) 722-7735

Kate DePaolis, *Dual Credit Coordinator*

Kate.DePaolis@pcc.edu

(971) 722-7736

Frank Smith, *Dual Credit Coordinator*

Frank.Smith@pcc.edu

(971) 722-7732

Brandy Bonnet, *Dual Credit Instructional Admin Asst III*

Brandy.Bonnet@pcc.edu

(971) 722-7737

Ann Cary, *PCC Dean of Academic Affairs*

ann.cary@pcc.edu

(971) 722-4481

Katy Ho, *PCC Vice President of Academic Affairs*

kho@pcc.edu

(971) 722-4005

Dual Credit Staff

Portland Community College

PO Box 19000

Portland, OR 97280-0990

www.pcc.edu/DualCredit

Dual.Credit@pcc.edu

(971) 722-7737



Table of Contents

2	Dual Credit Staff & Table of Contents
3-4	PCC Mission Statement, Strategic Planning, and College Reorganization
5	Dual Credit – What is it?
6	Credits with a Purpose, Goals of Accelerated Credit, Comparison of the Dual Credit models
7	Dual Credit Articulation Process at PCC
8-12	Oregon Department of Education - Dual Credit Standards
13	2020-21 PCC Dual Credit Data Summary
14	The Last 5 Years of PCC Dual Credit
15	Enrollment by PCC Subject Area
16	Tuition Savings by High School
17	District Articulation Summary
18-78	Articulation Details

PCC Mission and Strategic Planning

Mission Statement

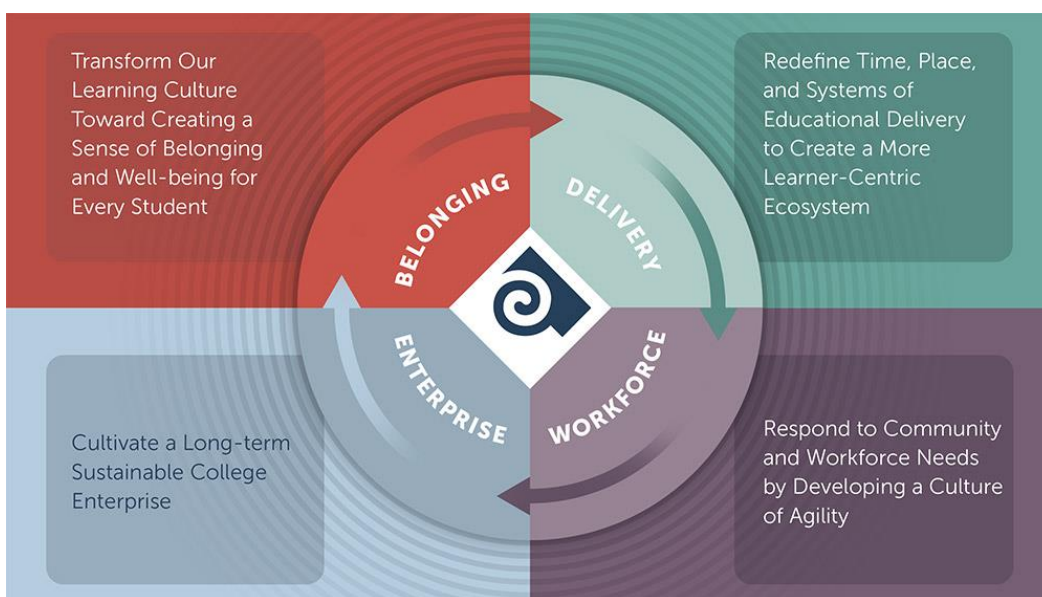
Portland Community College supports student success by delivering access to quality education while advancing economic development and promoting sustainability in a collaborative culture of diversity, equity and inclusion ([Board Policy 101](#)).

Core Themes

- 🐾 Access and Student Success
- 🐾 Economic Development & Sustainability
- 🐾 Quality Education
- 🐾 Diversity, Equity and Inclusion

Strategic Planning 2020-2025

For more than a year, amidst a global pandemic, remote operations, racial unrest, and regional wildfires, [PCC's Strategic Planning Steering Committee](#) and work groups have developed a strategic plan for the college. This plan has been reinforced by input and participation from the PCC community. It has evolved into a document that consists of four major strategic areas of focus and 20 individual initiatives. In November of 2020, PCC's elected Board of Directors approved the final draft of the college's new strategic plan.



PCC's Definition of belonging: After an individual's basic needs are met, the door is opened to create a sense of belonging. This sense of belonging is foundational to helping an individual self-actualize and thrive within an institution. In the college environment, both the academic and social elements work in tandem to create a sense of belonging. A sense of belonging is relational, reciprocal, and dynamic. It cultivates a feeling that the individual matters to the group, and that their personal identity and contributions are valued. Individuals experience that they are indispensable to the group and feel safe presenting themselves authentically in the group.

Belonging strategic initiatives are:

- 🐾 Create a sense of belonging in our learning environment as a college priority, and as a key factor in equitable student success.
- 🐾 Ensure every student has the opportunity to participate in an orientation experience.
- 🐾 Provide onboarding to all new employees to create a sense of belonging.
- 🐾 Provide training to all employees to develop competencies in principles of intercultural communication, systemic racism and social oppression, and culturally responsive practices that support our students and each other.
- 🐾 Develop and support a culture where all faculty and staff feel regularly acknowledged, inspired, engaged, and supported by each other and the college.

Delivery strategic initiatives are:

- 🐾 Cultivate a culture of student-focused teaching excellence, grounded in culturally-responsive, anti-racist pedagogies.
- 🐾 Design and strengthen the innovative and appropriate use of technology, becoming a leader in advancing equitable student success in all learning modalities.

- 🐾 Develop and scale learner-centered class offerings by expanding access in time, place, duration, and delivery in response to student and community pathways and barriers to our current course and class models.
- 🐾 Create a teaching, learning, and technology innovation hub centered around equity and driven by assessment of student learning outcomes, the unique needs of learners, and our workforce needs.
- 🐾 Implement comprehensive and equity-conscious support services that center the experiences of students who are most directly impacted by college delivery decisions.

Workforce strategic initiatives are:

- 🐾 Create new and sustain existing programs that lead to living wage jobs with partners that are rooted in core values related to equitable opportunity through education.
- 🐾 Establish a holistic college and career readiness experience that is integrated in student orientation and connected to inclusive, anti-poverty, and equitable support programs and resources that include in-program coaching and career launching support.
- 🐾 Provide students with a path for professional growth and advancement through work-based learning opportunities.
- 🐾 Create a data-informed continuous improvement ecosystem to establish agile decision making and build the infrastructure for implementation.
- 🐾 Welcome prospective students and partnerships with local employers including private, public and non-profit sectors, and community partners by removing barriers to entry and engagement.

Enterprise strategic initiatives are:

- 🐾 Advance equitable student success through the creation and diversification of new revenue streams that cultivate sustainability, align with PCC mission, and imagine new opportunities.
- 🐾 Create a more equitable college model and experience while expanding sustainable operations across the college that are responsive to the community and agile in the face of change.
- 🐾 Center and use proven anti-racist and anti-oppression systems to foster positive economic, environmental, and social growth, and provide accountability at all levels of the organization.
- 🐾 Collaborate with our Portland metro area community, colleges and universities, primary and secondary educational partners, and business community to improve efficiency and ensure long-term viability of our enterprise
- 🐾 Align and coordinate proactive college-wide planning based on assessment of internal and external factors, conditions and constituents with service toward our most marginalized and vulnerable populations as a guidepost.

College Reorganization

In 2017, in pursuit of equitable student success, PCC became an Achieving the Dream College (Yes to Equitable Student Success, or YESS). YESS started with an assessment of PCC's institutional readiness to improve equitable student success, then followed the integration of pre-existing initiatives with the development and implementation of several new ones. These efforts roughly outlined the shape of a student's journey at PCC, and the cumulative learning from these efforts identified that the shape of PCC's organization also influenced the shape of the student's journey (i.e., equitable student success). One focus in the reorganization efforts was to move instructional programs and divisions from campus-based to college-wide model.

One College Model for Equitable Student Success begins July 2021, in alignment with PCC's FY 21-23 biennium.

There are several guiding principles that undergird the organizational change:

- 🐾 We believe in and serve our mission.
- 🐾 We are committed to creating a college where every student belongs and can thrive.
- 🐾 We lead through compassion and a belief in justice, equity, inclusion, and diversity.
- 🐾 We understand that everyone, including ourselves, has the capacity to learn and grow.

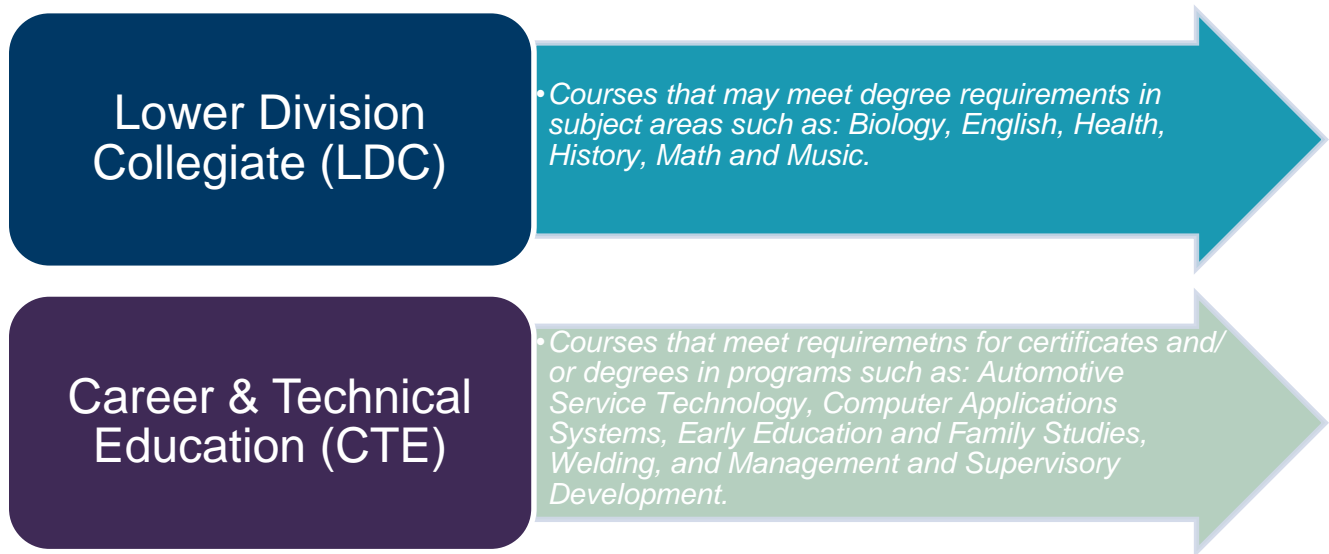


PCC Dual Credit – What is it?

The PCC Dual Credit Program provides the opportunity for high school students to earn college credit while still in high school. Students, who complete articulated courses taught at their high school by qualified high school faculty providing the same rigor and content as an on-campus college class, are eligible to receive PCC credit for free. In order to earn credit students must complete admissions to PCC and register for the college course offered within their high school.

Courses articulated for Dual Credit must provide the same content and outcomes as a PCC course, and be assessed regularly by the PCC Faculty. When these requirements are met, the course is considered “articulated” with a PCC course and students can earn college credit.

Students can earn PCC credit in:



Benefits to Students

- Enhances ability and skills to do college level work and builds confidence for college success.
- Students save money by earning free college credit and shortening the amount of time after high school to complete a college degree.
- PCC credits are usually transferable to all Oregon Public Universities and many other colleges and universities.
- Military enlistees may earn higher rank with earned college credit.
- Provides access to PCC student support services such as PCC’s Library, Writing Center, and online Tutoring Services.
- Dual Credit students are more likely to earn more credits by the second year of college and to finish college.

Benefits to High Schools and PCC

- Brings PCC and high school administrators and faculty together to develop curriculum, share instructional methods, ideas and experiences that benefit students.
- Coordinated curriculum reduces redundancy of courses between high school and college and increases rigor of classes.
- Increases the likelihood of students continuing their education beyond high school.

PCC Dual Credit Program

Credits with a Purpose

PCC Dual Credit is committed to providing high school students with college experiences at their high schools. In order to best support their post-secondary education PCC offers classes that will prepare students for their future career and education goals. Part of this communication is based on only offering courses required for a degree or certificate and avoiding classes that would be considered as an elective and not help students meet their educational goals.

Goals of Accelerated Credit at PCC

One of the primary goals is helping students become successful college students and bridging the gap between high school and college. Developing college-going behaviors is frequently more important than earning credit.

HIGH SCHOOL Practices	COLLEGE Practices
Registration is assisted and can be adjusted at later dates	Students must register themselves by hard deadlines
Student learning is guided by teachers/ parents	Students are responsible for their own learning
Parents and students own the academic information	Students own their academic information and must sign a release to share with anyone else including parents
Deadlines can be adjusted	Deadlines are final
Parent/ teacher/ counselor may initiate support	Assistance initiated by the student

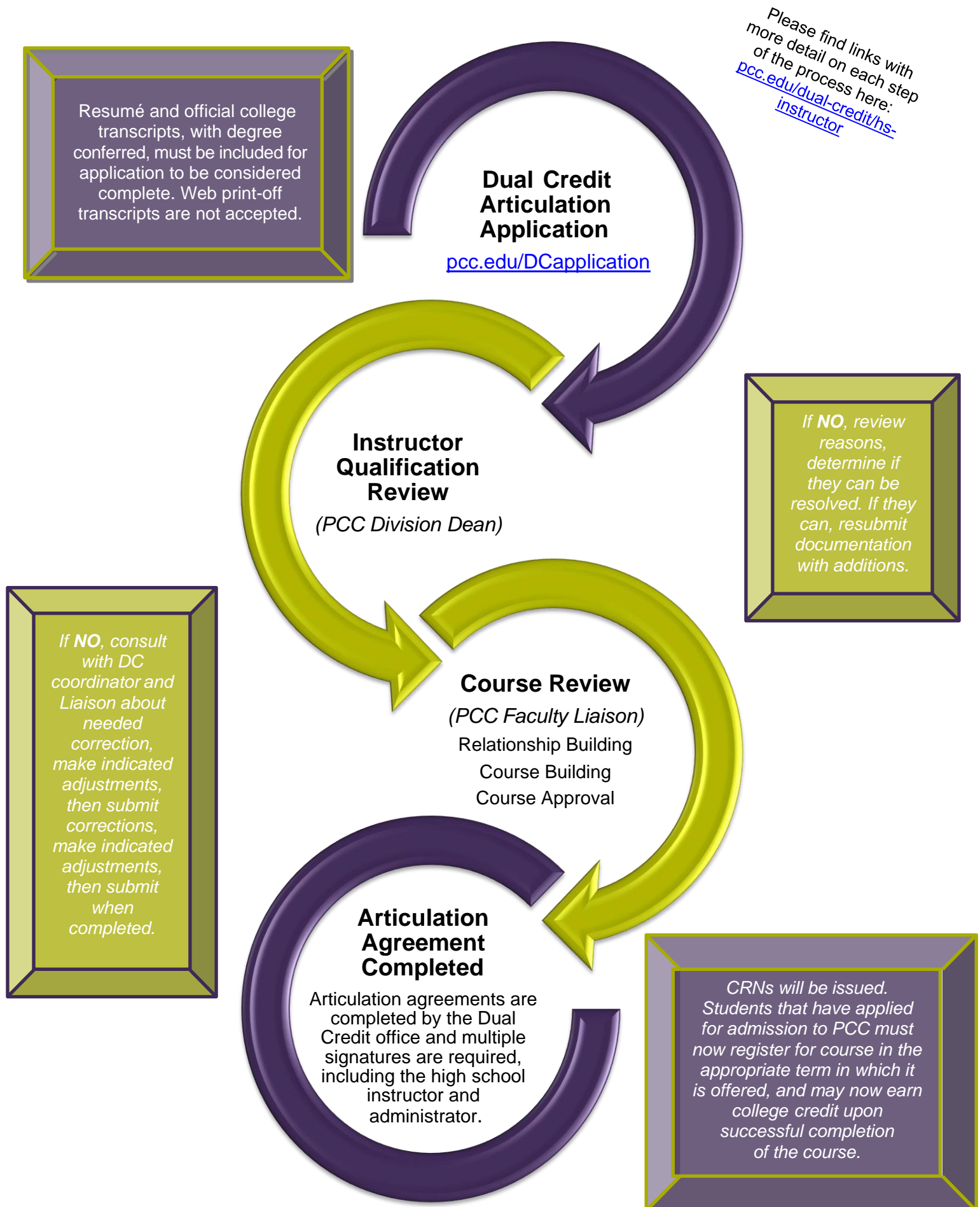
Comparison of the PCC Dual Credit Models

	STANDARD Dual Credit	SPONSORED Dual Credit
Teachers need a qualification review and typically require a masters in their field	Yes	Yes (but most disciplines require teachers to have certain credentials)
High school site visits and observations needed	Yes	Yes
Student transcript will be coded with an Asterisk for courses signifying coursework was not "standard credit"	No	No
Teachers are given CRNs for course registration	Yes	Yes
Students register for the course	Yes	Yes
Is there a cost to the school district for this type of PCC Credit?	No	Yes, but no cost to students
Is Dual Credit transferable?	Students should seek guidance about the applicability of all college credit earned directly from the higher learning institution they hope to attend.	

Applicability Statement: Dual Credit classes can help you develop college skills. Please be informed that:

Dual Credit classes are PCC college classes that are part of the official college transcript. College classes, including Dual Credit classes, may impact college GPA, along with scholarship, financial aid, and athletic eligibility. You can find out how courses can fulfill requirements at PCC. Visit catalog.pcc.edu.

Dual Credit Articulation Process





STANDARD DUAL CREDIT

Adopted by the Higher Education Coordinating Commission June 12, 2014

Updated by the Oversight Committee for High School Based College Credit Partnerships May 16, 2019

In Dual Credit courses, the high school teacher is qualified to act as a proxy faculty member for the college or university when teaching the course. These courses are sufficiently similar to enable the student to be described as “taking a course” from the postsecondary institution. Through ORS 340.310, HECC was charged with developing the standards for Dual Credit and other high school-based college credit partnership programs.

Curriculum	
Curriculum 1 (DC-C1)	College or university courses administered through a Dual Credit Program are catalogued courses and approved through the regular course approval process of the sponsoring college and/or university. These courses have the same departmental designation, number, title, and credits as their college counterparts, and they adhere to the same course descriptions.
Curriculum 2 (DC-C2)	College or university courses administered through a Dual Credit Program are recorded on the official academic record for students at the sponsoring college or university.
Curriculum 3 (DC-C3)	College or university courses administered through a Dual Credit Program reflect the pedagogical, theoretical and philosophical orientation of the college’s or university’s sponsoring academic departments.
Faculty	
Faculty 1 (DC-F1)	Instructors teaching college or university courses through Dual Credit meet the academic requirements for faculty and instructors teaching in the college or university.
Faculty 2 (DC-F2)	The college or university provides high school instructors with training and orientation in course curriculum, assessment criteria, course philosophy, and Dual Credit administrative requirements before certifying the instructors to teach the college or university courses.
Faculty 3 (DC-F3)	Instructors teaching Dual Credit sections are part of a continuing collegial interaction through professional development, access to essential academic resources, seminars, site visits, and ongoing communication with the college’s or university’s faculty and Dual Credit administrators. This interaction must occur before teaching the course and at least annually and address issues such as course content, course delivery, assessment, evaluation, and professional development in the field of study.

Faculty 4 (DC-F4)	Dual Credit Program policies address instructor non-compliance with the college's or university's expectations for courses offered through the Dual Credit Program (for example, non-participation in Dual Credit Program training and/or activities).
Student	
Student 1 (DC-S1)	The college or university officially registers or admits Dual Credit Program students as degree-seeking, non-degree seeking, or non-matriculated students of the college or university and records courses administered through a Dual Credit Program on official sponsoring college or university transcripts.
Student 2 (DC-S2)	Colleges or universities outline specific course requirements and prerequisites for students.
Student 3 (DC-S3)	High school students are provided with a student guide that outlines students' rights and responsibilities as well as providing guidelines for the transfer of credit and credits with a purpose.
Assessment	
Assessment 1 (DC-A1)	The college/university ensures Dual Credit Program students' proficiency of learning outcomes is measured using comparable grading standards and assessment methods to on campus sections.
Continuous Improvement	
Continuous Improvement 1 (DC-CI1)	The college or university conducts an end-of-term student course evaluation for courses offered through the Dual Credit Program. The course evaluation is intended to influence program improvement rather than instructor evaluation. Names (of the instructor or students) should not be included in the evaluation.

Appendix: Key Terms

Dual Credit, as defined by the standards, refers to a course that is

- a) Offered as part of the high school program,
- b) Taught by a high school teacher, acting as a proxy instructor for the college/university, who has been approved by the college/university and meets the qualifications to teach the course for the college/university,
- c) Sufficiently similar to the college/university course to enable the student to be described as “taking a course from the college or university”. Dual credit students enroll in the college course and grading and transcription is consistent with those of like courses at the college or university.

The Oregon Dual Credit Standards align with nationally recognized practices and very specifically focus on replicating, to the greatest extent possible, the college or university course in the high school. This includes requiring the participating high school teacher to meet the qualifications to teach the course for the college/university.

<https://www.oregon.gov/highered/policy-collaboration/Pages/college-credit-high-school.aspx>

Oregon Dual Credit Standards (Sponsored)



SPONSORED DUAL CREDIT

Adopted by the Higher Education Coordinating Commission June 9, 2016

Updated by the Oversight Committee for High School Based College Credit Partnerships May 16, 2019

In Sponsored Dual Credit courses, a high school teacher partners with a sponsoring faculty member at a college or university to offer the course. These courses are sufficiently similar to enable the student to be described as “taking a course” from the postsecondary institution. Through ORS 340.310, HECC was charged with developing standards for these sponsored dual credit programs

Curriculum	
Curriculum 1 (SDC-C1)	College or university courses administered through a Sponsored Dual Credit Program are catalogued courses and approved through the regular course approval process of the sponsoring college and/or university. These courses have the same departmental designation, number, title, and credits as their college counterparts, and they adhere to the same course descriptions and student learning outcomes.
Curriculum 2 (SDC-C2)	College or university courses administered through a Sponsored Dual Credit Program are administered in a manner that is consistent with like courses at the sponsoring college or university and recorded similarly on the official academic record for the sponsoring college or university.
Curriculum 3 (SDC-C3)	College or university courses administered through a Sponsored Dual Credit Program reflect the pedagogical, theoretical and philosophical orientation of the sponsoring college or university department/program where the credit will be awarded.
Curriculum 4 (SDC-C4)	The syllabi for college or university courses administered through a Sponsored Dual Credit Program are consistent with the syllabi from the sponsoring college or university and include clearly defined learning outcomes and student expectations. Syllabi are reviewed and approved by the academic faculty in the partnership from the sponsoring college or university department/program where the credit will be awarded.
Curriculum 5 (SDC-C5)	Credits for college or university courses administered through a Sponsored Dual Credit Program are awarded based on documented student achievement consistent with the student learning outcomes and course content.

Faculty	
Faculty 1 (SDC-F1)	High School teachers teaching college or university courses as part of a Sponsored Dual Credit Program are approved and authorized by the sponsoring college or university in accordance with corresponding institutional policies, procedures and practices.
Faculty 2 (SDC-F2)	The sponsoring college or university provides high school teachers in Sponsored Dual Credit Programs with training and orientation in course curriculum, assessment criteria, course philosophy, and Sponsored Dual Credit administrative requirements before they begin to teach the college or university courses.
Faculty 3 (SDC-F3)	<p>The sponsoring college or university has a well-documented process for regular, ongoing, and substantive interaction between high school teachers and college or university faculty in Sponsored Dual Credit Programs to address student learning outcomes, course content, delivery, and assessment to maintain consistency across course sections offered by the college or university. This interaction occurs before teaching the course and at least once a quarter/semester*.</p> <p><i>*College or university faculty partners may determine that more interactions are appropriate, based on the high school teacher's level of expertise, teaching experience, and experience working in Sponsored Dual Credit Programs. However, in all cases, the interaction must occur at least once a quarter/semester.</i></p>
Faculty 4 (SDC-F4)	Sponsored Dual Credit Program policies at each sponsoring college or university address teacher non-compliance with the college's or university's expectations for courses offered through Sponsored Dual Credit Programs (for example, non- participation in Sponsored Dual Credit Program training and/or activities). Such policies clearly define the impact of non-compliance, including the effect on awarding college or university credit.
Faculty 5 (SDC-F5)	Teaching partnerships within Sponsored Dual Credit Programs demonstrate that the aggregate of the teaching roles within the partnership provides appropriate expertise in the content or professional area, and performs the duties, responsibilities and functions of traditional faculty, based upon clearly stated criteria, qualifications, and procedures. Sponsoring faculty members have clearly defined authority and responsibility and exercise a major role in the design, approval, and implementation of the teaching partnerships.
Faculty 6 (SDC-F6)	High school teachers teaching college or university classes as part of a Sponsored Dual Credit Program receive feedback for continuous improvement to ensure that student learning outcomes, course content, and assessment are consistent with the sponsoring college's or university's course, as determined by institutional policies, procedures and practices."
Faculty 7 (SDC-F7)	High school teachers teaching college or university courses in a Sponsored Dual Credit Program have access to essential academic resources comparable to those used in other sections of the same courses offered by the sponsoring college or university as deemed appropriate by faculty in the department/program where credit will be awarded.

Student	
Student 1 (SDC-S1)	The sponsoring college or university officially registers or admits Sponsored Dual Credit Program students as degree-seeking, non-degree seeking, or non-matriculated students of the college or university and records courses administered through a Sponsored Dual Credit Program on official sponsoring college or university transcripts. Registration, grading, and transcription procedures and timelines are reasonably consistent with those for other students taking the same courses from the sponsoring college or university.
Student 2 (SDC-S2)	The sponsoring college or university outlines specific course requirements and prerequisites for students in Sponsored Dual Credit Programs.
Student 3 (SDC-S3)	High school students in Sponsored Dual Credit Programs are provided with a student guide that outlines students' rights and responsibilities and provides guidelines for the transfer of credit and credits with a purpose.
Assessment	
Assessment 1 (SDC-A1)	The college/university ensures Sponsored Dual Credit Program students' proficiency of learning outcomes is measured using comparable grading standards and assessment methods to on campus sections.
Continuous Improvement	
Continuous Improvement 1 (SDC-CI1)	The sponsoring college or university conducts an end-of-term student course evaluation for courses offered through a Sponsored Dual Credit Program. The course evaluation is intended to influence program improvement rather than instructor evaluation. Names (of the instructor or students) should not be included in the evaluation.

Appendix: Key Terms

Sponsored Dual Credit, as defined by the standards, refers to a course that is

- a) Offered as part of the high school program,
- b) Taught by a high school teacher in partnership with a sponsoring college/university faculty member who meets the qualifications to teach the course for the college/university, and
- c) Sufficiently similar to the college/university course to enable the student to be described as “taking a course from the college or university”. Sponsored Dual credit students enroll in the college course and grading and transcription is consistent with those of like courses at the college or university.

While the adopted Sponsored Dual Credit standards are modeled after the Oregon Dual Credit Standards, they broaden the options for offering college or university courses at the high school by providing explicit standards for faculty/teacher partnerships to ensure appropriate expertise, oversight and alignment. This allows a high school the opportunity to work closely with a college or university to offer these courses even though the high school may not have teachers who meet the higher education institution's qualifications for teaching the college or university courses. <https://www.oregon.gov/highered/policy-collaboration/Pages/college-credit-high-school.aspx>

2020-21 Summary



53 High Schools

206 Articulating High School Faculty

13 New Articulating Faculty

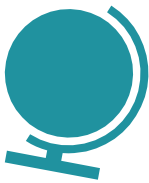
24 New Courses Added

79 PCC Faculty Liaisons



45 PCC Program Areas (17 CTE/ 28 LDC)

420 Active Articulation Agreements



131 PCC Courses Articulated (42 CTE/ 89 LDC)

421 CRNs Created

4,230 Unduplicated Student Enrollment

7,313 Duplicated Student Enrollment

26,851 Credits Awarded



\$3,302,673 Tuition Savings to Students



706.18 FTE Generated from the State

(COVID-19)

68 Classes could not be offered
this year without an in-person
instruction component



The Last Five Years of Dual Credit

The chart below is a five-year summary of the overall student participation in the PCC Dual Credit program.

53 high schools articulate with PCC Dual Credit. In 2020-21, **4,230** students registered for PCC Dual Credit classes and earned **26,851** in college credits.

PCC Dual Credit students are waived tuition and fees on those articulated classes. This was a savings to students and families of **\$3,302,673** in tuition alone. The Dual Credit program generated approximately **706.18** FTE PCC from the state.

The Last 5 years of Dual Credit	School Year	Articulating High School Dual Credit Faculty	Unduplicated Student Headcount*	Total Credits	Tuition Savings**
	2016-17	268	6,759	42,432	\$ 4,073,472
	2017-18	287	6,830	42,416	\$ 4,411,264
	2018-19	250	6,361	39,879	\$ 4,426,569
	2019-20	220	6,112	36,452	\$ 4,228,432
	2020-21	206	4,230	26,851	\$ 3,302,673

Not all PCC or high school courses were able to be offered in the 2020-21 school year due to the COVID-19 pandemic and in-person instructional components not being able to be satisfied. There were 68 Dual Credit classes that were not able to be offered this year, resulting in a lower than average unduplicated student headcount.

*Total number of individual students who received college credit through Dual Credit program

**Savings to students equals the total value of the credits at \$123 per credit

Class of 2021 Student Achievements

923 students graduated having earned between 9 and 19 credits



3,893 students graduated this year that had earned college credits through the PCC Dual Credit Program!

294 students graduated having earned 20 or more credits

Enrollment by PCC Subject Area

PCC Subject Area	Articulating High Schools	High School Dual Credit Faculty	Unduplicated Student Enrollment	Total Credits Earned
American Sign Language ASL	3	2	56	224
Anthropology ATH	2	3	152	608
Architectural Design & Drafting ARCH	3	3	45	224
Art ART	3	3	55	165
Biology BI	8	10	363	2,585
Biology BI Sponsored Dual Credit	1	1	41	244
Bioscience Technology BIT	2	2	25	50
Building Construction Technology BCT	1	2	15	210
Business Administration BA	10	14	428	1,825
College Success and Career Guidance CG	4	10	416	1,161
Computer Aided Design & Drafting CADD	4	4	42	146
Computer Information Systems CIS	3	3	36	144
Computer Science CS	4	4	100	440
Criminal Justice CJA	1	1	60	312
Early Childhood Education ECE	3	3	88	270
Early Childhood Education ECE Sponsored Dual Credit	2	2	45	135
Economics EC	1	1	59	412
Education ED	4	4	25	75
Electronic Engineering Technology EET	1	1	3	12
Engineering ENGR	3	3	37	37
English ENG	4	5	118	596
Environmental Studies ESR	5	5	76	468
Exercise Science FT	1	1	7	28
Fire Protection FP	3	5	56	408
French FR	1	1	12	48
General Science GS	1	1	37	148
History HST	3	3	332	3,572
Integrated Reading and Writing IRW	1	2	45	270
Japanese JPN	1	1	10	50
Journalism J	1	1	5	20
Management & Supervisory Development MSD	3	5	169	566
Math MTH	11	16	652	4,904
Math MTH Sponsored Dual Credit	4	5	172	761
Medical Professions MP	5	10	115	460
Microelectronics Technology MT	1	1	21	54
Multimedia MM	3	3	20	80
Music MUS	5	5	42	98
Physics PHY	1	1	2	9
Political Science PS	1	1	67	268
Psychology PSY	1	1	177	708
Spanish SPA	4	4	82	316
Theatre Arts TA	3	3	29	124
Writing WR	11	17	683	2,836
Writing WR Sponsored Dual Credit	1	3	195	780

Tuition Savings by School

School	Unduplicated Student Enrollment	Total Credits Earned	Tuition Savings
Alliance High School at Meek Campus	2	12	\$ 1,476
Aloha High School	79	416	\$ 51,168
Banks High School	10	60	\$ 7,380
Beaverton Academy of Science and Engineering (BASE)	35	317	\$ 38,991
Beaverton High School	116	498	\$ 61,254
Benson High School	74	390	\$ 47,970
BSD Health Options Program at Beaverton High School	52	194	\$ 23,862
Cascadia Tech Academy	94	624	\$ 76,752
Central Catholic High School	103	657	\$ 80,811
Century High School	29	107	\$ 13,161
David Douglas High School	19	57	\$ 7,011
De La Salle North Catholic High School	16	104	\$ 12,792
Early College High School (Beaverton School District)	252	744	\$ 91,512
Forest Grove High School	216	1,577	\$ 193,971
Franklin High School	90	387	\$ 47,601
Glencoe High School	103	450	\$ 55,350
Grant High School	429	2,052	\$ 252,396
Hillsboro High School	18	56	\$ 6,888
HSD Early College	89	89	\$ 10,947
Ida B. Wells-Barnett High School <i>(formerly known as Wilson High School)</i>	90	506	\$ 62,238
Jefferson High School	69	378	\$ 46,494
Jesuit High School	174	1,157	\$ 142,311
Lake Oswego High School	84	388	\$ 47,724
Lakeridge High School	142	1,007	\$ 123,861
Leodis V. McDaniel High School <i>(formerly known as Madison High School)</i>	48	220	\$ 27,060
Liberty High School	101	845	\$ 103,935
Lincoln High School	15	60	\$ 7,380
McMinnville High School	1	4	\$ 492
Metropolitan Learning Center (MLC)	4	16	\$ 1,968
Mountainside High School	29	131	\$ 16,113
Newberg High School	107	837	\$ 102,951
Park Academy	5	20	\$ 2,460
Riverdale High School	17	68	\$ 8,364
Roosevelt High School	65	274	\$ 33,702
Sabin - Schellenberg Center	38	257	\$ 31,611
Sherwood High School	419	5,809	\$ 714,507
Southridge High School	73	388	\$ 47,724
St. Helens High School	2	9	\$ 1,107
Sunset High School	191	535	\$ 65,805
Tigard High School	294	2,755	\$ 338,865
Tillamook High School	2	8	\$ 984
Tualatin High School	162	1,060	\$ 130,380
Valor Christian School International	15	60	\$ 7,380
Westview High School	250	1,240	\$ 152,520
Wilsonville High School	7	28	\$ 3,444

District Articulation Summary

		High School	Unduplicated Student Enrollment	Total Credits Earned	Tuition Savings
District	Beaverton	Aloha High School	79	416	\$ 51,168
		Beaverton Academy of Science & Engineering (BASE)	35	317	\$ 38,991
		Beaverton High School	116	498	\$ 61,254
		BSD Health Options Program at Beaverton	52	194	\$ 23,862
		Early College High School (ECHS)	252	744	\$ 91,512
		Mountainside High School	29	131	\$ 16,113
		Southridge High School	73	388	\$ 47,724
		Sunset High School	191	535	\$ 65,805
		Westview High School	250	1,240	\$ 152,520
		Total:	1,077	4,463	\$ 548,949

		High School	Unduplicated Student Enrollment	Total Credits Earned	Tuition Savings
District	Hillsboro	Century High School	29	107	\$ 13,161
		Glencoe High School	103	450	\$ 55,350
		Hillsboro High School	18	56	\$ 6,888
		HSD Early College	89	89	\$ 10,947
		Liberty High School	101	845	\$ 103,935
		Total:	340	1,547	\$ 190,281

		High School	Unduplicated Student Enrollment	Total Credits Earned	Tuition Savings
District	Lake Oswego	Lake Oswego High School	84	388	\$ 47,724
		Lakeridge High School	142	1,007	\$ 123,861
		Park Academy	5	20	\$ 2,460
		Total:	231	1,415	\$ 174,045

		High School	Unduplicated Student Enrollment	Total Credits Earned	Tuition Savings
District	Portland Public	Alliance High School at Meek Campus	2	12	\$ 1,476
		Benson High School	74	390	\$ 47,970
		Franklin High School	90	387	\$ 47,601
		Grant High School	429	2,052	\$ 252,396
		Ida B. Wells-Barnett High School (formerly known as Wilson High School)	90	506	\$ 62,238
		Jefferson High School	69	378	\$ 46,494
		Leodis V. McDaniel High School (formerly known as Madison High School)	48	220	\$ 27,060
		Lincoln High School	15	60	\$ 7,380
		Metropolitan Learning Center (MLC)	4	16	\$ 1,968
		Roosevelt High School	65	274	\$ 33,702
		Total:	886	4,295	\$ 528,285

		High School	Unduplicated Student Enrollment	Total Credits Earned	Tuition Savings
District	Tigard-Tualatin	Tigard High School	294	2,755	\$ 338,865
		Tualatin High School	162	1,060	\$ 130,380
		Total:	456	3,815	\$ 469,245

Articulation Details - Table of Contents

Alliance High School at Meek Campus.....	19
Aloha High School	20-21
Banks High School	22
Beaverton Academy of Science and Engineering (BASE).....	23
Beaverton High School	24
Benson High School	25
BSD Health Options Program at Beaverton High School	26
Cascadia Tech Academy	27-28
Central Catholic High School	29-30
Century High School.....	31
David Douglas High School	32
De La Salle North Catholic High School	33
Early College High School (Beaverton School District).....	34-35
Forest Grove High School	36-38
Franklin High School.....	39
Glencoe High School	40
Grant High School	41-42
Hillsboro High School	43
HSD Early College.....	44
Ida B. Wells-Barnett High School (<i>formerly known as Wilson High School</i>)	45-46
Jefferson High School.....	47
Jesuit High School.....	48
Lake Oswego High School	49
Lakeridge High School.....	50
Leodis V. McDaniel High School (<i>formerly known as Madison High School</i>)	51
Liberty High School.....	52-53
Lincoln High School	54
McMinnville High School.....	55
Metropolitan Learning Center (MLC)	56
Mountainside High School.....	57
Newberg High School	58
Park Academy	59
Riverdale High School	60
Roosevelt High School	61
Sabin - Schellenberg Center.....	62
Sherwood High School	63-65
Southridge High School	66
St. Helens High School.....	67
Sunset High School	68
Tigard High School	69-70
Tillamook High School	71
Tualatin High School.....	72-73
Valor Christian School International	74
Westview High School	75-76
Wilsonville High School	77
Schools that could not articulate this year (COVID-19).....	78

2020-2021 Articulation Details by Discipline

PCC Subject Area Courses under Articulation	High School Course Title	Instructor	Duplicated Enrollment	Credits Earned
--	--------------------------	------------	--------------------------	-------------------

Alliance High School at Meek Campus

1st Semester (PCC Winter Term)

Biology

BI 141	Habitats: Life of the Forest (4)	Forest Ecology	Joe Ferguson	1	4
--------	----------------------------------	----------------	--------------	---	---

2nd Semester (PCC Spring Term)

Biology

BI 164	Bird ID and Ecology (4)	Bird Ecology	Joe Ferguson	2	8
--------	-------------------------	--------------	--------------	---	---

Total: 3 12

Unduplicated Enrollment: 2

Classes that could not be offered this year because of remote learning due to COVID 19

High School Instructor	PCC Course	PCC Credits
Jerry Eaton	WLD 111	4

Note: Demographics not displayed when unduplicated headcount is 10 or fewer students.

2020-2021 Articulation Details by Discipline

PCC Subject Area Courses under Articulation	High School Course Title	Instructor	Duplicated Enrollment	Credits Earned
--	--------------------------	------------	--------------------------	-------------------

Aloha High School

1st Semester (PCC Winter Term)

Biology

BI 101 ✧	Biology (4)	AP Biology	Laura Jelinek	6	24
BI 102 ✧	Biology (4)	AP Biology	Laura Jelinek	6	24

Environmental Studies

ESR 171	Environmental Science - Biological Perspectives (4)	AP Environmental Science	Alexis Howell-Kubler	20	80
---------	---	--------------------------	----------------------	----	----

Spanish

SPA 103	First Year Spanish – 3 rd Term (4)	Spanish IV/V	Enrique Abad	7	28
SPA 201	Second Year Spanish – 1 st Term (4)	AP Spanish	Enrique Abad	17	68

2nd Semester (PCC Spring Term)

Biology

BI 101 ✧	Biology (4)	AP Biology	Laura Jelinek	14	56
BI 102 ✧	Biology (4)	AP Biology	Laura Jelinek	14	56

Spanish

SPA 103	First Year Spanish – 3 rd Term (4)	Spanish Literacy III	Enrique Abad	20	80
---------	---	----------------------	--------------	----	----

Total: 104 416

Unduplicated Enrollment: 79

✧ PCC Biology Instructor of Record: Jan Just

2020-2021 Articulation Details by Discipline

PCC Subject Area
Courses under Articulation

High School Course Title

Instructor

Duplicated
Enrollment

Credits
Earned

Aloha High School

Classes that could not be offered this year because of remote learning due to COVID 19

High School Instructor	PCC Course	PCC Credits
Ariel Hays	MTH 111	5
	MTH 112	5
Bill Volk	HE 112	1
Dennis Larsen	ARCH 101	3
	ARCH 111	3
	ARCH 127	3
	CADD 126	3
	CADD 160	4
Louise Drow	AM 100	4
	AM 111	4
	AM 151	4
	AM 161	4
Michael Esmay	MTH 243	5
	MTH 244	4
Taylor Austad	MTH 243	5
	MTH 244	4
Terry Richesin	CIS 122	4
	CIS 145	4

Source	Demographic							
	American Indian/ Alaska Native	Asian	Black/ African American	Hispanic/ Latino	Multi-Racial	Native Hawaiian/ Pacific Islander	White	Not reported
2020-21 PCC Dual Credit Admission Application	0.0%	11.4%	3.8%	26.6%	3.8%	0.0%	29.1%	25.3%
2019-20 Aloha High School Oregon Report Card	0.5%	7.0%	5.0%	44.0%	6.0%	2.0%	35.0%	0.0%
2019-20 Beaverton SD 48J Oregon Report Card	0.5%	17.0%	3.0%	25.0%	8.0%	1.0%	46.0%	0.0%

2020-2021 Articulation Details by Discipline

PCC Subject Area Courses under Articulation	High School Course Title	Instructor	Duplicated Enrollment	Credits Earned
--	--------------------------	------------	--------------------------	-------------------

Banks High School

Q1/3 (PCC Spring Term)

Fire Protection

FP 133	Wildland firefighter (3)	Fire Science I	Rodney Linz	10	30
--------	--------------------------	----------------	-------------	----	----

Q2/4 (PCC Spring Term)

Fire Protection

FP 101	Principles of Emergency Services (3)	Fire Science I	Rodney Linz	10	30
--------	--------------------------------------	----------------	-------------	----	----

Total: 20 60

Unduplicated Enrollment: 10

Classes that could not be offered this year because of remote learning due to COVID 19

High School Instructor	PCC Course	PCC Credits
Kristina Passadore	MM 230	4
	MM 260	4
Tim Eggleston	WLD 111	4

Note: Demographics not displayed when unduplicated headcount is 10 or fewer students.

2020-2021 Articulation Details by Discipline

PCC Subject Area Courses under Articulation	High School Course Title	Instructor	Duplicated Enrollment	Credits Earned
--	--------------------------	------------	--------------------------	-------------------

Beaverton Academy of Science and Engineering (BASE)

1st Semester (PCC Winter Term)

Math

MTH 111	College Algebra (5)	Pre-Calculus	Stephanie Joiner	32	160
---------	---------------------	--------------	------------------	----	-----

2nd Semester (PCC Spring Term)

Math

MTH 112	Elementary Functions (5)	Pre-Calculus	Stephanie Joiner	29	145
---------	--------------------------	--------------	------------------	----	-----

Yearlong (PCC Spring Term)

Electronic Engineering Technology

EET 121	Digital Systems I (4)	Digital Electronics	Tom Baker	3	12
---------	-----------------------	---------------------	-----------	---	----

Total: 64 317

Unduplicated Enrollment: 35

Classes that could not be offered this year because of remote learning due to COVID 19

High School Instructor	PCC Course	PCC Credits
Sean Morrison	CADD 185	3
	ENGR 100	1
Tom Baker	EET 101A	1

Source	Demographic							
	American Indian/ Alaska Native	Asian	Black/ African American	Hispanic/ Latino	Multi-Racial	Native Hawaiian/ Pacific Islander	White	Not reported
2020-21 PCC Dual Credit Admission Application	0.0%	25.7%	5.7%	8.6%	8.6%	0.0%	42.9%	8.6%
2019-20 BASE Oregon Report Card	1.0%	12.0%	2.0%	29.0%	8.0%	0.5%	47.0%	0.0%
2019-20 Beaverton SD 48J Oregon Report Card	0.5%	17.0%	3.0%	25.0%	8.0%	1.0%	46.0%	0.0%

2020-2021 Articulation Details by Discipline

PCC Subject Area Courses under Articulation	High School Course Title	Instructor	Duplicated Enrollment	Credits Earned
--	--------------------------	------------	--------------------------	-------------------

Beaverton High School

Quarter 1 (PCC Fall Term)

Management & Supervisory Development

MSD 116	Creative Thinking for Innovative Change (1)	Digital Media Capstone	Casi Yost	6	6
---------	---	------------------------	-----------	---	---

Quarter 4 (PCC Spring Term)

Management and Supervisory Development

MSD 177	Team Building (1)	Digital Marketing	Kathryn Robinson	0	0
---------	-------------------	-------------------	------------------	---	---

1st Semester (PCC Winter Term)

Business Administration

BA 205	Business Communication using tech (4)	Marketing Seminar	Kathryn Robinson	17	68
BA 223	Principles of Marketing (4)	Marketing 2	Emily Ramberg	11	44

Computer Aided Design & Drafting

CADD 160	Drafting Fundamentals (4)	A531: Drafting & Design 1	Paul Webb	3	12
----------	---------------------------	---------------------------	-----------	---	----

Management & Supervisory Development

MSD 107	Organizations and People (3)	Marketing 2	Emily Ramberg	11	33
MSD 123	Job Search Strategies (1)	Marketing Seminar	Kathryn Robinson	17	17
MSD 194	Effective Presentation Skills (1)	Marketing Seminar	Kathryn Robinson	17	17

2nd Semester (PCC Spring Term)

Business Administration

BA 223	Principles of Marketing (4)	Marketing 2	Emily Ramberg	22	88
--------	-----------------------------	-------------	---------------	----	----

Management & Supervisory Development

MSD 107	Organizations and People (3)	Marketing 2	Emily Ramberg	22	66
MSD 177	Team Building (1)	Digital Marketing	Kathryn Robinson	12	12
MSD 180A	Goal Setting and Productivity (1)	Sports & Event Marketing	Kathryn Robinson	19	19

Total: 157 382

Unduplicated Enrollment: 116

Source	Demographic							
	American Indian/ Alaska Native	Asian	Black/ African American	Hispanic/ Latino	Multi- Racial	Native Hawaiian/ Pacific Islander	White	Not reported
2020-21 PCC Dual Credit Admission Application	0.0%	12.1%	0.0%	6.9%	12.1%	0.0%	45.7%	23.3%
2019-20 Beaverton High School Oregon Report Card	0.5%	6.0%	3.0%	42.0%	6.0%	1.0%	42.0%	0.0%
2019-20 Beaverton SD 48J Oregon Report Card	0.5%	17.0%	3.0%	25.0%	8.0%	1.0%	46.0%	0.0%

2020-2021 Articulation Details by Discipline

PCC Subject Area Courses under Articulation	High School Course Title	Instructor	Duplicated Enrollment	Credits Earned
--	--------------------------	------------	--------------------------	-------------------

Benson High School

1st Semester (PCC Winter Term)

Math

MTH 111	College Algebra (5)	Precalculus 1/2	Kayla Stolte	17	85
---------	---------------------	-----------------	--------------	----	----

2nd Semester (PCC Spring Term)

Computer Science

CS 160	Exploring Computer Science (4)	Computer Science 2	David Beckler	33	132
--------	--------------------------------	--------------------	---------------	----	-----

Math

MTH 111	College Algebra (5)	Precalculus 1/2	Kayla Stolte	29	145
---------	---------------------	-----------------	--------------	----	-----

Medical Professions

MP 111	Medical Terminology (4)	Medical Terminology	Nicole Kennedy	5	20
--------	-------------------------	---------------------	----------------	---	----

Yearlong (PCC Spring Term)

Medical Professions

MP 111	Medical Terminology (4)	Emergency Medical: Advanced Program	Irynne Padua	2	8
--------	-------------------------	--	--------------	---	---

Total: 86 390

Unduplicated Enrollment: 74

Classes that could not be offered this year because of remote learning due to COVID 19

High School Instructor	PCC Course	PCC Credits
David Beckler	CS 161	4
Luke Hotchkiss	BCT 102	3
	BCT 104	3
	BCT 106	3
	BCT 120	3
	BCT 121	3
	BCT 216	2

Source	Demographic							
	American Indian/ Alaska Native	Asian	Black/ African American	Hispanic/ Latino	Multi-Racial	Native Hawaiian/ Pacific Islander	White	Not reported
2020-21 PCC Dual Credit Admission Application	1.4%	18.9%	2.7%	8.1%	5.4%	0.0%	51.4%	12.2%
2019-20 Benson High School Oregon Report Card	0.5%	8.0%	12.0%	26.0%	9.0%	1.0%	44.0%	0.0%
2019-20 Portland SD 1J Oregon Report Card	0.5%	3.0%	15.0%	27.0%	11.0%	0.0%	43.0%	0.0%

2020-2021 Articulation Details by Discipline

PCC Subject Area Courses under Articulation	High School Course Title	Instructor	Duplicated Enrollment	Credits Earned
--	--------------------------	------------	--------------------------	-------------------

BSD Health Options Program at Beaverton High School

Yearlong (PCC Spring Term)

College Success and Career Guidance

CG 130H	Introduction to Today's Careers: Health (2)	BSD Health Careers Program	Matt Bayha	23	46
CG 130H	Introduction to Today's Careers: Health (2)	BSD Health Careers Program	Paula Jacobs	0	0
CG 130H	Introduction to Today's Careers: Health (2)	BSD Health Careers Program	Ron Romanick	0	0

Medical Professions

MP 111	Medical Terminology (4)	BSD Health Careers Program	Heather Poliszuk	12	48
MP 111	Medical Terminology (4)	BSD Health Careers Program	Matt Bayha	29	116
MP 111	Medical Terminology (4)	BSD Health Careers Program	Michele Jakubauskas	25	100
MP 111	Medical Terminology (4)	BSD Health Careers Program	Paula Jacobs	0	0
MP 111	Medical Terminology (4)	BSD Health Careers Program	Ron Romanick	0	0

Total: 89 310

Unduplicated Enrollment: 52

Classes that could not be offered this year because of remote learning due to COVID 19

High School Instructor	PCC Course	PCC Credits
Matt Bayha	HE 252	4
Paula Jacobs	HE 252	4
Ron Romanick	BI 121	4
	BI 122	4

Note: Demographics not available for some option schools and programs.

2020-2021 Articulation Details by Discipline

PCC Subject Area Courses under Articulation	High School Course Title	Instructor	Duplicated Enrollment	Credits Earned
--	--------------------------	------------	--------------------------	-------------------

Cascadia Tech Academy – Criminal Justice

1st Semester (PCC Winter Term)

Criminal Justice

CJA 112	Intro to Criminal Justice- Courts (3)	Criminal Justice A (1 st year)	Tony Shaver	31	93
CJA 117	Introduction to Homeland Security (3)	Criminal Justice A (2 nd year)	Tony Shaver	17	51

2nd Semester (PCC Spring Term)

Criminal Justice

CJA 100	Professions in Criminal Justice (3)	Criminal Justice A (12 th)	Tony Shaver	12	36
CJA 111	Intro to Criminal Justice- Police (3)	Criminal Justice A (11 th /12 th)	Tony Shaver	44	132

(Criminal Justice) **Total: 104 312**

Cascadia Tech Academy – Fire Protection

CCFD6 Station #61

Fire Protection (Special Registration – PCC Winter Term)

FP 123	Hazardous Materials awareness and Operations (3)	Hazardous Materials/WMD Awareness and Operations	Jordan Scott	8	24
--------	--	--	--------------	---	----

Fire Protection (1st Semester - PCC Winter Term)

FP 101	Principles of Emergency Services (3)	Principles of Emergency Svcs	Jordan Scott	9	27
FP 121	Fire Behavior and Combustion (3)	Fire Behavior and Combustion	Jordan Scott	9	27

CCFD3 Station #31

Fire Protection (Special Registration – PCC Winter Term)

FP 123	Hazardous Materials awareness and Operations (3)	Hazardous Materials/WMD Awareness and Operations	Larry Bauska	12	36
--------	--	--	--------------	----	----

Fire Protection (1st Semester - PCC Winter Term)

FP 101	Principles of Emergency Services (3)	Principles of Emergency Svcs	Larry Bauska	13	39
FP 121	Fire Behavior and Combustion (3)	Fire Behavior and Combustion	Larry Bauska	13	39

Fire Protection (Trimester 3 – PCC Spring Term)

FP 133	Wildland firefighter (3)	Wildland Firefighter	Larry Bauska	8	24
--------	--------------------------	----------------------	--------------	---	----

2020-2021 Articulation Details by Discipline

PCC Subject Area Courses under Articulation	High School Course Title	Instructor	Duplicated Enrollment	Credits Earned
--	--------------------------	------------	--------------------------	-------------------

Cascadia Tech Academy - Fire Protection

CCF&R Station #26

Fire Protection (Special Registration – PCC Winter Term)

FP 123	Hazardous Materials awareness and Operations (3)	Hazardous Materials/WMD Awareness and Operations	Josh Haldeman	9	27
--------	--	--	---------------	---	----

Fire Protection (1st Semester - PCC Winter Term)

FP 101	Principles of Emergency Services (3)	Principles of Emergency Svcs	Josh Haldeman	9	27
--------	--------------------------------------	------------------------------	---------------	---	----

Fire Protection (Trimester 3 – PCC Spring Term)

FP 133	Wildland firefighter (3)	Wildland Firefighter	Josh Haldeman	6	18
--------	--------------------------	----------------------	---------------	---	----

Fire Protection (2nd Semester - PCC Spring Term)

FP 121	Fire Behavior and Combustion (3)	Fire Behavior and Combustion	Josh Haldeman	8	24
--------	----------------------------------	------------------------------	---------------	---	----

(Fire Protection) **Total:** **104** **312**

Cascadia Total **208** **624**

Unduplicated Enrollment: 94

Classes that could not be offered this year because of remote learning due to COVID 19

High School Instructor	PCC Course	PCC Credits
Jordan Scott	FP 133	3

Source	Demographic							
	American Indian/ Alaska Native	Asian	Black/ African American	Hispanic/ Latino	Multi-Racial	Native Hawaiian/ Pacific Islander	White	Not reported
2020-21 PCC Dual Credit Admission Application	0.0%	1.5%	1.5%	9.1%	0.0%	1.5%	75.8%	10.6%

2020-2021 Articulation Details by Discipline

PCC Subject Area Courses under Articulation	High School Course Title	Instructor	Duplicated Enrollment	Credits Earned
--	--------------------------	------------	--------------------------	-------------------

Central Catholic High School

1st Semester (PCC Winter Term)

Music

MUS 166A	Jazz Ensemble I (1)	Honors Jazz Band	Chris McLean	1	1
MUS 166B	Jazz Ensemble II (1)	Honors Jazz Band	Chris McLean	0	0
MUS 170	Music Tech: Beats and Basics (3)	Electronic Music Lab	Chris McLean	0	0
MUS 195A	Symphonic Band (1)	Morning Concert Band	Chris McLean	0	0
MUS 195B	Symphonic Band (1)	Morning Concert Band	Chris McLean	0	0
MUS 220A	Chorus I (1)	Concert Choir	Chris McLean	0	0
MUS 220B	Chorus II (1)	Concert Choir	Chris McLean	0	0

2nd Semester (PCC Spring Term)

American Sign Language

ASL 201	American Sign Language IV (4)	Second-Year ASL	Anne Marie Eagle	4	16
---------	-------------------------------	-----------------	------------------	---	----

English

ENG 104	Intro to Literature- Fiction (4)	AP Literature	Arin Wallenius	31	124
ENG 106	Intro to Lit- Poetry (4)	AP Literature	Arin Wallenius	32	128

Music

MUS 166A	Jazz Ensemble I (1)	Honors Jazz Band	Chris McLean	0	0
MUS 166B	Jazz Ensemble II (1)	Honors Jazz Band	Chris McLean	0	0
MUS 170	Music Tech: Beats and Basics (3)	Electronic Music Lab	Chris McLean	0	0
MUS 195A	Symphonic Band (1)	Morning Concert Band	Chris McLean	0	0
MUS 195B	Symphonic Band (1)	Morning Concert Band	Chris McLean	0	0
MUS 220A	Chorus I (1)	Concert Choir	Chris McLean	0	0
MUS 220B	Chorus II (1)	Concert Choir	Chris McLean	0	0

Yearlong (PCC Spring Term)

Biology

BI 121	Intro to Human Anatomy & Physiology I (4)	Human Anatomy & Physiology	Kathy Frederick	30	120
--------	---	----------------------------	-----------------	----	-----

Spanish

SPA 270A	Readings in Spanish Lit. (Hispanic) (3)	Spanish 4/Comp. & Culture	Angela Dankenbring	12	36
----------	---	---------------------------	--------------------	----	----

2020-2021 Articulation Details by Discipline

PCC Subject Area
Courses under Articulation

High School Course Title

Instructor

Duplicated
Enrollment

Credits
Earned

Central Catholic High School

Yearlong (PCC Spring Term)

Writing

WR 121	English Composition (4)	English IV	Liz Danek	23	92
WR 121	English Composition (4)	English IV	Sarah Branscum	35	140

Total: 168 657

Unduplicated Enrollment: 103

Classes that could not be offered this year because of remote learning due to COVID 19

High School Instructor	PCC Course	PCC Credits
Aric Ward	R 210	4

Source

Demographic

	American Indian/ Alaska Native	Asian	Black/ African American	Hispanic/ Latino	Multi-Racial	Native Hawaiian/ Pacific Islander	White	Not reported
2020-21 PCC Dual Credit Admission Application	1.9%	6.8%	5.8%	2.9%	5.8%	0.0%	70.9%	5.8%

2020-2021 Articulation Details by Discipline

PCC Subject Area Courses under Articulation	High School Course Title	Instructor	Duplicated Enrollment	Credits Earned
--	--------------------------	------------	--------------------------	-------------------

Century High School

Q1/3 (PCC Spring Term)

Early Childhood Education

ECE 120	Intro to Early Childhood Education & Family Studies (3)	Child Services 3	Alia Laack	6	18
---------	---	------------------	------------	---	----

Q2/4 (PCC Spring Term)

Early Childhood Education

ECE 120	Intro to Early Childhood Education & Family Studies (3)	Child Services 3	Alia Laack	3	9
ECE 121	Observation and Guidance (3)	Child Development 4	Alia Laack	4	12

Medical Professions

MP 111	Medical Terminology (4)	Health Sciences II	Rachelle Carnes	17	68
--------	-------------------------	--------------------	-----------------	----	----

Total: 30 107

Unduplicated Enrollment: 29

Classes that could not be offered this year because of remote learning due to COVID 19

High School Instructor	PCC Course	PCC Credits
Brenna Moreno	HE 112	1
Rachelle Carnes	HE 112	1

Source	Demographic							
	American Indian/ Alaska Native	Asian	Black/ African American	Hispanic/ Latino	Multi-Racial	Native Hawaiian/ Pacific Islander	White	Not reported
2020-21 PCC Dual Credit Admission Application	0.0%	40.7%	0.0%	22.2%	0.0%	0.0%	22.2%	14.8%
2019-20 Century High School Oregon Report Card	1.0%	14.0%	3.0%	30.0%	7.0%	1.0%	45.0%	0.0%
2019-20 Hillsboro SD 1J Oregon Report Card	1.0%	6.0%	2.0%	35.0%	6.0%	1.0%	48.0%	0.0%

2020-2021 Articulation Details by Discipline

PCC Subject Area Courses under Articulation	High School Course Title	Instructor	Duplicated Enrollment	Credits Earned
--	--------------------------	------------	--------------------------	-------------------

David Douglas High School

2nd Semester (PCC Spring Term)

Architectural Design & Drafting

ARCH 101	Intro to Residential Design (3)	Architectural Design II	Trisha Fisher	5	15
ARCH 127	Introduction to Google SketchUp (3)	Architectural Design I	Trisha Fisher	14	42

Total: 19 57

Unduplicated Enrollment: 19

Source	Demographic							
	American Indian/ Alaska Native	Asian	Black/ African American	Hispanic/ Latino	Multi- Racial	Native Hawaiian/ Pacific Islander	White	Not reported
2020-21 PCC Dual Credit Admission Application	0.0%	26.3%	0.0%	10.5%	0.0%	0.0%	36.8%	26.3%
2019-20 David Douglas High School Oregon Report Card	1.0%	18.0%	12.0%	27.0%	6.0%	2.0%	34.0%	0.0%
2019-20 David Douglas SD 40 Oregon Report Card	1.0%	15.0%	12.0%	27.0%	7.0%	3.0%	36.0%	0.0%

2020-2021 Articulation Details by Discipline

PCC Subject Area Courses under Articulation	High School Course Title	Instructor	Duplicated Enrollment	Credits Earned
--	--------------------------	------------	--------------------------	-------------------

De La Salle North Catholic High School

1st Semester (PCC Winter Term)

Math

MTH 251	Calculus I (4)	AP Calculus	Barb Bodzin	5	20
---------	----------------	-------------	-------------	---	----

2nd Semester (PCC Spring Term)

Math

MTH 252	Calculus II (4)	AP Calculus	Barb Bodzin	4	16
---------	-----------------	-------------	-------------	---	----

Yearlong (PCC Spring Term)

Biology

BI 121	Introduction to Human Anatomy & Physiology I (4)	Senior Honors Anatomy and Physiology	Amy Lacks	8	32
--------	--	--------------------------------------	-----------	---	----

Environmental Studies

ESR 171	Environmental Science - Biological Perspectives (4)	Environmental Science	Anne Myrthue	9	36
---------	---	-----------------------	--------------	---	----

Total: 26 104

Unduplicated Enrollment: 16

Source	Demographic							
	American Indian/ Alaska Native	Asian	Black/ African American	Hispanic/ Latino	Multi-Racial	Native Hawaiian/ Pacific Islander	White	Not reported
2020-21 PCC Dual Credit Admission Application	6.3%	12.5%	31.3%	0.0%	0.0%	0.0%	37.5%	12.5%

2020-2021 Articulation Details by Discipline

PCC Subject Area Courses under Articulation	High School Course Title	Instructor	Duplicated Enrollment	Credits Earned
--	--------------------------	------------	--------------------------	-------------------

Early College High School (*Beaverton School District*)

PCC Fall Term

College Success and Career Guidance (Rock Creek)

CG 101	College Survival & Success: Personal Responsibility (1)	College Survival & Success: Personal Responsibility	Megan Brooke	25	25
CG 101	College Survival & Success: Personal Responsibility (1)	College Survival & Success: Personal Responsibility	Megan Brooke	16	16
CG 101	College Survival & Success: Personal Responsibility (1)	College Survival & Success: Personal Responsibility	Jeff Cochran	15	15
CG 101	College Survival & Success: Personal Responsibility (1)	College Survival & Success: Personal Responsibility	Beth Johnson	17	17
CG 101	College Survival & Success: Personal Responsibility (1)	College Survival & Success: Personal Responsibility	Heidi Lohman	25	25
CG 102	College Survival & Success: Goal Setting (1)	College Survival & Success: Goal Setting	Megan Brooke	16	16
CG 102	College Survival & Success: Goal Setting (1)	College Survival & Success: Goal Setting	Megan Brooke	25	25
CG 102	College Survival & Success: Goal Setting (1)	College Survival & Success: Goal Setting	Jeff Cochran	15	15
CG 102	College Survival & Success: Goal Setting (1)	College Survival & Success: Goal Setting	Beth Johnson	17	17
CG 102	College Survival & Success: Goal Setting (1)	College Survival & Success: Goal Setting	Heidi Lohman	25	25
CG 225	Transfer to a 4-Yr College (2)	Transfer to a 4-Yr College	Jeff Cochran	13	26

College Success and Career Guidance (Sylvania)

CG 101	College Survival & Success: Personal Responsibility (1)	College Survival & Success: Personal Responsibility	Heidi Lohman	22	22
CG 101	College Survival & Success: Personal Responsibility (1)	College Survival & Success: Personal Responsibility	Sarah Seeborg	24	24
CG 101	College Survival & Success: Personal Responsibility (1)	College Survival & Success: Personal Responsibility	Sarah Seeborg	16	16
CG 102	College Survival & Success: Goal Setting (1)	College Survival & Success: Goal Setting	Heidi Lohman	22	22
CG 102	College Survival & Success: Goal Setting (1)	College Survival & Success: Goal Setting	Sarah Seeborg	24	24
CG 102	College Survival & Success: Goal Setting (1)	College Survival & Success: Goal Setting	Sarah Seeborg	16	16
CG 225	Transfer to a Four-Year College (2)	Transfer to a 4-Yr College	Sarah Seeborg	11	22

2020-2021 Articulation Details by Discipline

PCC Subject Area Courses under Articulation	High School Course Title	Instructor	Duplicated Enrollment	Credits Earned
--	--------------------------	------------	--------------------------	-------------------

Early College High School (*Beaverton School District*)

PCC Winter Term

College Success and Career Guidance (*Rock Creek*)

CG 101	College Survival & Success: Personal Responsibility (1)	College Survival & Success: Personal Responsibility	Heidi Lohman	17	17
CG 102	College Survival & Success: Goal Setting (1)	College Survival & Success: Goal Setting	Heidi Lohman	17	17
CG 140B	Career & Life Planning (2)	Career & Life Planning	Megan Brooke	15	30
CG 140B	Career & Life Planning (2)	Career & Life Planning	Megan Brooke	15	30
CG 140B	Career & Life Planning (2)	Career & Life Planning	Beth Johnson	15	30
CG 140B	Career & Life Planning (2)	Career & Life Planning	Heidi Lohman	16	32

College Success and Career Guidance (*Sylvania*)

CG 140B	Career & Life Planning (2)	Career & Life Planning	Heidi Lohman	17	34
CG 225	Transfer to a 4-Yr College (2)	Transfer to a 4-Yr College	Sarah Seeborg	5	10

PCC Spring Term

College Success and Career Guidance (*Rock Creek*)

CG 140B	Career & Life Planning (2)	Career & Life Planning	Heidi Lohman	12	24
CG 140B	Career & Life Planning (2)	Career & Life Planning	Jeff Cochran	16	32
CG 140B	Career & Life Planning (2)	Career & Life Planning	Megan Brooke	11	22
CG 140B	Career & Life Planning (2)	Career & Life Planning	Megan Brooke	12	24

College Success and Career Guidance (*Sylvania*)

CG 140B	Career & Life Planning (2)	Career & Life Planning	Heidi Lohman	13	26
CG 140B	Career & Life Planning (2)	Career & Life Planning	Sarah Seeborg	13	26
CG 140B	Career & Life Planning (2)	Career & Life Planning	Sarah Seeborg	11	22

Total: 549 744

Unduplicated Enrollment: 252

Source	Demographic							
	American Indian/ Alaska Native	Asian	Black/ African American	Hispanic/ Latino	Multi- Racial	Native Hawaiian/ Pacific Islander	White	Not reported
2020-21 PCC Dual Credit Admission Application	0.4%	10.3%	4.8%	16.3%	7.9%	0.0%	53.2%	7.1%

2020-2021 Articulation Details by Discipline

PCC Subject Area
Courses under Articulation

High School Course Title

Instructor

Duplicated
Enrollment

Credits
Earned

Forest Grove High School

Quarter 1 (PCC Fall Term)

Biology

BI 101	Biology (4)	Honors Biology	Ben Crabtree	51	204
--------	-------------	----------------	--------------	----	-----

Math

MTH 111	College Algebra (5)	Pre-Calculus	Annette Faris	10	50
---------	---------------------	--------------	---------------	----	----

MTH 251	Calculus I (4)	AP Calculus AB	Allison Samuel	12	48
---------	----------------	----------------	----------------	----	----

Quarter 2 (PCC Winter Term)

Biology

BI 102	Biology (4)	Honors Biology	Ben Crabtree	43	172
--------	-------------	----------------	--------------	----	-----

Math

MTH 112	Elementary Functions (5)	Pre-Calculus	Annette Faris	8	40
---------	--------------------------	--------------	---------------	---	----

MTH 252	Calc II (4)	AP Calculus AB	Allison Samuel	11	44
---------	-------------	----------------	----------------	----	----

Quarter 3 (PCC Spring Term)

Education

ED 100	Intro to Education for Paraeducators (3)	FGHS Intro to Education	Danielle Thompson	2	6
--------	--	-------------------------	-------------------	---	---

Environmental Studies

ESR 171	Env. Science – Biological Perspectives (4)	AP Environmental Sciences	Neil Borzcik	11	44
---------	--	---------------------------	--------------	----	----

Math

MTH 111	College Algebra (5)	Pre-Calculus	Allison Samuel	16	80
---------	---------------------	--------------	----------------	----	----

MTH 111	College Algebra (5)	Pre-Calculus	Annette Faris	14	70
---------	---------------------	--------------	---------------	----	----

Microelectronics Technology

MT 101	Intro to Semiconductor Manufacturing (1)	Mechatronics 4	John Worst	4	4
--------	--	----------------	------------	---	---

MT 121	Digital Systems I (3)	Mechatronics 3	John Worst	11	33
--------	-----------------------	----------------	------------	----	----

Quarter 4 (PCC Spring Term)

Education

ED 100	Intro to Education for Paraeducators (3)	FGHS Intro to Education	Danielle Thompson	3	9
--------	--	-------------------------	-------------------	---	---

Environmental Studies

ESR 172	Env. Science – Chemical Perspectives (4)	AP Environmental Science	Neil Borzcik	8	32
---------	--	--------------------------	--------------	---	----

Math

MTH 112	Elementary Functions (5)	Pre-Calculus	Allison Samuel	10	50
---------	--------------------------	--------------	----------------	----	----

MTH 112	Elementary Functions (5)	Pre-Calculus	Annette Faris	12	60
---------	--------------------------	--------------	---------------	----	----

2020-2021 Articulation Details by Discipline

PCC Subject Area Courses under Articulation	High School Course Title	Instructor	Duplicated Enrollment	Credits Earned
--	--------------------------	------------	--------------------------	-------------------

Forest Grove High School

Quarter 4 (PCC Spring Term)

Microelectronics Technology

MT 101	Intro to Semiconductor Manufacturing (1)	Mechatronics 4	John Worst	8	8
MT 121	Digital Systems I (3)	Mechatronics 3	John Worst	3	9

1st Semester (PCC Winter Term)

Business Administration

BA 101	Intro to Business Administration (4)	Introduction to Business	Jillian Miller	43	172
--------	--------------------------------------	--------------------------	----------------	----	-----

Exercise Science

FT 131	Structure & Function of the Human Body (4)	Anatomy and Physiology	Adam Kriz	4	16
--------	--	------------------------	-----------	---	----

Medical Professions

MP 111	Medical Terminology (4)	Medical Terminology	Adam Kriz	6	24
--------	-------------------------	---------------------	-----------	---	----

2nd Semester (PCC Spring Term)

Business Administration

BA 101	Intro to Business Administration (4)	Introduction to Business	Jillian Miller	21	84
BA 205	Business Communication using Tech. (4)	Business Communications	Jillian Miller	24	96

Exercise Science

FT 131	Structure & Function of the Human Body (4)	Anatomy and Physiology	Adam Kriz	3	12
--------	--	------------------------	-----------	---	----

Yearlong (PCC Spring Term)

Building Construction Technology

BCT 106	Hand tool/power tool safety (3)	Cabinetry	Arnulfo Martinez	0	0
BCT 106	Hand tool/power tool safety (3)	Basic Construction / Woods 2	Chris Higginbotham	0	0
BCT 120	Floor Framing (3)	Advanced Bldg. Construction	Chris Higginbotham	15	45
BCT 121	Wall Framing (3)	Advanced Bldg. Construction	Chris Higginbotham	15	45
BCT 128	Exterior Finish (6)	Advanced Bldg. Construction	Chris Higginbotham	15	90
BCT 218	Woodworking Projects (2)	Cabinetry	Arnulfo Martinez	0	0
BCT 219	Cabinetmaking I (6)	Cabinetry	Arnulfo Martinez	0	0
BCT 226	Finish Carpentry (2)	Advanced Bldg. Construction	Chris Higginbotham	15	30
BCT 244	Kitchen and Bath Cabinet Installation (2)	Cabinetry	Arnulfo Martinez	0	0

Total: 398 1,577

Unduplicated Enrollment: 216

2020-2021 Articulation Details by Discipline

PCC Subject Area
Courses under Articulation

High School Course Title

Instructor

Duplicated
Enrollment

Credits
Earned

Forest Grove High School

Classes that could not be offered this year because of remote learning due to COVID 19

High School Instructor	PCC Course	PCC Credits
Jami Duyck	LAT 106	4
	LAT 109	3
	WLD 111	4
Matt Richardson	CADD 175	3

Source

Demographic

	American Indian/ Alaska Native	Asian	Black/ African American	Hispanic/ Latino	Multi-Racial	Native Hawaiian/ Pacific Islander	White	Not reported
2020-21 PCC Dual Credit Admission Application	1.4%	1.4%	0.0%	18.0%	4.3%	0.5%	49.8%	24.6%
2019-20 Forest Grove High School Oregon Report Card	0.5%	2.0%	1.0%	54.0%	3.0%	0.5%	40.0%	0.0%
2019-20 Forest Grove SD 15 Oregon Report Card	0.5%	2.0%	1.0%	54.0%	3.0%	0.5%	40.0%	0.0%

2020-2021 Articulation Details by Discipline

PCC Subject Area Courses under Articulation	High School Course Title	Instructor	Duplicated Enrollment	Credits Earned
--	--------------------------	------------	--------------------------	-------------------

Franklin High School

Quarter 2 (PCC Winter Term)

Computer Information Systems

CIS 122	Intro to Programming logic (4)	Digital Design and Computer Coding 4	Joe Rowe	5	20
---------	--------------------------------	--------------------------------------	----------	---	----

1st Semester (PCC Winter Term)

Business Administration

BA 101	Intro to Business Administration (4)	Intro to Business 1-2	Tim Biamont	38	152
BA 218	Personal Finance (4)	Personal Finance	José Losoya	4	16

Education

ED 100	Introduction to Education for Paraeducators (3)	Introduction to Education	Anna York	4	12
--------	---	---------------------------	-----------	---	----

Writing

WR 121	English Composition (4)	College Writing	Jenny Tatone	25	100
--------	-------------------------	-----------------	--------------	----	-----

2nd Semester (PCC Spring Term)

Business Administration

BA 101	Intro to Business Administration (4)	Intro to Business 1-2	Tim Biamont	15	60
BA 111	Intro to Accounting (3)	Accounting 1-2	José Losoya	5	15
BA 218	Personal Finance (4)	Personal Finance	José Losoya	3	12

Total: 99 387

Unduplicated Enrollment: 90

Classes that could not be offered this year because of remote learning due to COVID-19

High School Instructor	PCC Course	PCC Credits
Dan Silvernail	BCT 106	3
	BCT 216	2
	BCT 217	2
Myron Ryan	WLD 111	4

Source	Demographic							
	American Indian/ Alaska Native	Asian	Black/ African American	Hispanic/ Latino	Multi-Racial	Native Hawaiian/ Pacific Islander	White	Not reported
2020-21 PCC Dual Credit Admission Application	0.0%	20.0%	1.1%	7.8%	6.7%	0.0%	46.7%	17.8%
2019-20 Franklin High School Oregon Report Card	0.5%	13.0%	5.0%	19.0%	9.0%	1.0%	54.0%	0.0%
2019-20 Portland SD 1J Oregon Report Card	0.5%	3.0%	15.0%	27.0%	11.0%	0.0%	43.0%	0.0%

2020-2021 Articulation Details by Discipline

PCC Subject Area
Courses under Articulation

High School Course Title

Instructor

Duplicated
Enrollment

Credits
Earned

Glencoe High School

Quarter 1 (PCC Fall Term)

Business Administration

PCC Subject Area	High School Course Title	Instructor	Duplicated Enrollment	Credits Earned
BA 218 Personal Finance (4)	Personal Finance	Eric Walker	16	64

Quarter 3, Q1/3 (PCC Spring Term)

Business Administration

BA 111 Intro to Accounting (3)	Accounting I	Eric Walker	12	36
BA 218 Personal Finance (4)	Personal Finance	Eric Walker	24	96

Medical Professions

MP 111 Medical Terminology (4)	Health Sciences 2	Melanie Lewis	11	44
--------------------------------	-------------------	---------------	----	----

Theater Arts

TA 141 Fundament. of Acting Techniques (4)	Drama/ Theatre 2	Lori Daliposon	9	36
--	------------------	----------------	---	----

Quarter 4, Q2/4 (PCC Spring Term)

Business Administration

BA 111 Intro to Accounting (3)	Accounting I	Eric Walker	18	54
BA 218 Personal Finance (4)	Personal Finance	Eric Walker	18	72

Medical Professions

MP 111 Medical Terminology (4)	Health Sciences 2	Melanie Lewis	8	32
--------------------------------	-------------------	---------------	---	----

Theatre Arts

TA 111 Fundamentals of Technical Theatre (4)	Technical Theatre 1	Lori Daliposon	4	16
TA 142 Fundamentals of Acting Techniques (4)	Drama/ Theatre 3 or 4	Lori Daliposon	0	0

Total: 120 450

Unduplicated Enrollment: 103

Classes that could not be offered this year because of remote learning due to COVID 19

High School Instructor	PCC Course	PCC Credits
Michael O'Connor	ARCH 126	3
	CADD 126	3

Source	Demographic							
	American Indian/ Alaska Native	Asian	Black/ African American	Hispanic/ Latino	Multi-Racial	Native Hawaiian/ Pacific Islander	White	Not reported
2020-21 PCC Dual Credit Admission Application	1.0%	5.9%	0.0%	4.0%	5.9%	0.0%	63.3%	17.8%
2019-20 Glencoe High School Oregon Report Card	1.0%	4.0%	2.0%	37.0%	4.0%	0.5%	51.0%	0.0%
2019-20 Hillsboro SD 1J Oregon Report Card	1.0%	6.0%	2.0%	35.0%	6.0%	1.0%	48.0%	0.0%

2020-2021 Articulation Details by Discipline

PCC Subject Area Courses under Articulation	High School Course Title	Instructor	Duplicated Enrollment	Credits Earned
--	--------------------------	------------	--------------------------	-------------------

Grant High School

1st Semester (PCC Winter Term)

Art

ART 253A	Ceramics (3)	Ceramics & Sculpture: Intermediate	Jamin London Tinsel	20	60
----------	--------------	------------------------------------	---------------------	----	----

Math

MTH 105	Math in Society (4)	Data & Statistics	David Shiryayev	40	160
---------	---------------------	-------------------	-----------------	----	-----

Writing

WR 115	Intro to College Composition (4)	English 5-6	Scott Blevins	38	152
WR 115	Intro to College Composition (4)	English 5-6	Rachel Fealk	42	168
WR 115	Intro to College Composition (4)	English 5-6	Sunshine McFaul-Amadoro	38	152
WR 121	English Composition (4)	African American Literature	Jon Carr	22	88
WR 121	English Composition (4)	African American Literature	Mykhail Deych	16	64
WR 121	English Composition (4)	Latin American Literature	Hannah Fisher	19	76
WR 121	English Composition (4)	Latin American Literature	Chris Hawking	12	48
WR 121	English Composition (4)	Feminism and Gender Studies	Virginia Warfield	6	24

2nd Semester (PCC Spring Term)

Art

ART 253A	Ceramics (3)	Ceramics & Sculpture: Intermediate	Jamin London Tinsel	12	36
----------	--------------	------------------------------------	---------------------	----	----

English

ENG 104	Intro to Literature- Fiction (4)	Student Library Assist. Internship	Paige Battle	4	16
---------	----------------------------------	------------------------------------	--------------	---	----

Math

MTH 105	Math in Society (4)	Data & Statistics	David Shiryayev	38	152
---------	---------------------	-------------------	-----------------	----	-----

Theater Arts

TA 141	Fundament. of Acting Techniques (4)	Senior Production	Trisha Todd	11	44
--------	-------------------------------------	-------------------	-------------	----	----

Writing

WR 115	Intro to College Composition (4)	English 5-6	Scott Blevins	41	164
WR 115	Intro to College Composition (4)	English 5-6	Rachel Fealk	33	132
WR 115	Intro to College Composition (4)	English 5-6	Sunshine McFaul-Amadoro	42	168
WR 121	English Composition (4)	African American Literature	Jon Carr	8	32
WR 121	English Composition (4)	African American Literature	Mykhail Deych	17	68
WR 121	English Composition (4)	Latin American Literature	Rachel Fealk	13	52
WR 121	English Composition (4)	Latin American Literature	Hannah Fisher	9	36
WR 121	English Composition (4)	Latin American Literature	Chris Hawking	36	144
WR 121	English Composition (4)	Feminism and Gender Studies	Virginia Warfield	4	16

2020-2021 Articulation Details by Discipline

PCC Subject Area
Courses under Articulation

High School Course Title

Instructor

Duplicated
Enrollment

Credits
Earned

Grant High School

Total: 521 2,052

Unduplicated Enrollment: 429

✧ PCC Math Instructor of Record: Bret Rickman

✧ PCC Writing Instructor of Records: Caroline LeGuin or Calin Anderson

Classes that could not be offered this year because of remote learning due to COVID 19

High School Instructor	PCC Course	PCC Credits
Amy Polzin	BI 101	4

Source	Demographic							
	American Indian/ Alaska Native	Asian	Black/ African American	Hispanic/ Latino	Multi-Racial	Native Hawaiian/ Pacific Islander	White	Not reported
2020-21 PCC Dual Credit Admission Application	0.7%	3.5%	1.2%	2.3%	10.7%	0.5%	73.0%	8.1%
2019-20 Grant High School Oregon Report Card	1.0%	3.0%	6.0%	8.0%	11.0%	0.5%	72.0%	0.0%
2019-20 Portland SD 1J Oregon Report Card	0.5%	3.0%	15.0%	27.0%	11.0%	0.0%	43.0%	0.0%

2020-2021 Articulation Details by Discipline

PCC Subject Area Courses under Articulation	High School Course Title	Instructor	Duplicated Enrollment	Credits Earned
--	--------------------------	------------	--------------------------	-------------------

Hillsboro High School

Q1/3 (PCC Spring Term)

Bioscience Tech

BIT 102	Current Topics in Bioscience Tech (2)	Intro to Bioscience Tech	Brian Pendergrass	10	20
---------	---------------------------------------	--------------------------	-------------------	----	----

Business Administration

BA 101	Intro to Business Administration (4)	IB Business Management SL	Tim Kasper	4	16
--------	--------------------------------------	---------------------------	------------	---	----

Computer Science

CS 161	Computer Science I (4)	Intro to Computer Science	Terry Alexander	5	20
--------	------------------------	---------------------------	-----------------	---	----

Q2/4 (PCC Spring Term)

Computer Science

CS 160	Exploring Computer Science (4)	Computer Science Principles	Terry Alexander	0	0
--------	--------------------------------	-----------------------------	-----------------	---	---

Total: 19 56

Unduplicated Enrollment: 18

Classes that could not be offered this year because of remote learning due to COVID 19

High School Instructor	PCC Course	PCC Credits
Brian Pendergrass	BIT 105	2
Glenn Campbell	AM 100	4
Wayne Clift	EET 101A	1
	EET 121	4

Source	Demographic							
	American Indian/ Alaska Native	Asian	Black/ African American	Hispanic/ Latino	Multi-Racial	Native Hawaiian/ Pacific Islander	White	Not reported
2020-21 PCC Dual Credit Admission Application	0.0%	5.6%	0.0%	16.7%	33.3%	0.0%	38.9%	5.6%
2019-20 Hillsboro High School Oregon Report Card	1.0%	4.0%	2.0%	50.0%	5.0%	1.0%	37.0%	0.0%
2019-20 Hillsboro SD 1J Oregon Report Card	1.0%	6.0%	2.0%	35.0%	6.0%	1.0%	48.0%	0.0%

2020-2021 Articulation Details by Discipline

PCC Subject Area Courses under Articulation	High School Course Title	Instructor	Duplicated Enrollment	Credits Earned
--	--------------------------	------------	--------------------------	-------------------

HSD Early College

Trimester 1 (PCC Fall Term)

College Success and Career Guidance

CG 101	College Survival & Success: Personal Responsibility (1)	Career Credit	Anya Hershberger	46	46
--------	--	---------------	------------------	----	----

PCC Winter Term

College Success and Career Guidance

CG 102	College Survival & Success: Goal Setting (1)	Career Credit	Anya Hershberger	43	43
--------	---	---------------	------------------	----	----

Total: 89 89

Unduplicated Enrollment: 46

2020-2021 Articulation Details by Discipline

PCC Subject Area Courses under Articulation	High School Course Title	Instructor	Duplicated Enrollment	Credits Earned
--	--------------------------	------------	--------------------------	-------------------

Ida B. Wells-Barnett High School *(formerly known as Wilson High School)*

Quarter 1 (PCC Fall Term)

Economics

EC 201	Intro Macro Economics (4)	AP Microeconomics	Joshua Winicki	28	112
--------	---------------------------	-------------------	----------------	----	-----

Quarter 2 (PCC Winter Term)

Economics

EC 202	Intro Micro Economics (4)	AP Macroeconomics	Joshua Winicki	23	92
--------	---------------------------	-------------------	----------------	----	----

Quarter 3 (PCC Spring Term)

Economics

EC 201	Intro Macro Economics (4)	AP Microeconomics	Joshua Winicki	29	116
--------	---------------------------	-------------------	----------------	----	-----

Quarter 4 (PCC Spring Term)

Economics

EC 202	Intro Micro Economics (4)	AP Macroeconomics	Joshua Winicki	23	92
--------	---------------------------	-------------------	----------------	----	----

1st Semester (PCC Winter Term)

Music

MUS 220A	Chorus I (1)	Choir: Wilsingers	Margaret Murer	6	6
MUS 220B	Chorus II (1)	Choir: Wilsingers	Margaret Murer	1	1

Writing

WR 121	English Composition (4)	English 7-8	Nora Brooks	16	64
--------	-------------------------	-------------	-------------	----	----

2nd Semester (PCC Spring Term)

Music

MUS 158A	Chamber Ensemble (1)	Chamber Orchestra	Margaret Murer	3	3
MUS 158B	Chamber Ensemble (1)	Chamber Orchestra	Margaret Murer	1	1
MUS 221A	Chamber Chorus (1)	Wilson Adv. Vocal Ensemble	Margaret Murer	6	6
MUS 221B	Chamber Chorus (1)	Wilson Adv. Vocal Ensemble	Margaret Murer	1	1

Writing

WR 121	English Composition (4)	English Composition	Nora Brooks	3	12
--------	-------------------------	---------------------	-------------	---	----

Total: 140 506

Unduplicated Enrollment: 90

2020-2021 Articulation Details by Discipline

PCC Subject Area
Courses under Articulation

High School Course Title

Instructor

Duplicated
Enrollment

Credits
Earned

Ida B. Wells-Barnett High School *(formerly known as Wilson High School)*

Classes that could not be offered this year because of remote learning due to COVID 19

High School Instructor	PCC Course	PCC Credits
Aaron Olsen	CG 130H	2
	HE 112	1
Ben Hunter	WR 121	4
Chris Bartlo	CS 161	4
Kathy Diamond	WR 121	4

Source	Demographic							
	American Indian/ Alaska Native	Asian	Black/ African American	Hispanic/ Latino	Multi-Racial	Native Hawaiian/ Pacific Islander	White	Not reported
2020-21 PCC Dual Credit Admission Application	0.0%	4.4%	3.3%	1.1%	8.9%	0.0%	80.0%	2.2%
2019-20 Ida B Wells-Barnett High School Oregon Report Card	0.5%	3.0%	5.0%	9.0%	9.0%	1.0%	74.0%	0.0%
2019-20 Portland SD 1J Oregon Report Card	0.5%	3.0%	15.0%	27.0%	11.0%	0.0%	43.0%	0.0%

2020-2021 Articulation Details by Discipline

PCC Subject Area
Courses under Articulation

High School Course Title

Instructor

Duplicated
Enrollment

Credits
Earned

Jefferson High School

Q1/3 (PCC Spring Term)

Math

MTH 95	Intermediate Algebra (4)	Pre-Calculus 1-2	Joseph Ballman	11	44
--------	--------------------------	------------------	----------------	----	----

1st Semester (PCC Winter Term)

Art

ART 115	Basic Design - 2D Foundations (3)	Advanced Art/ ART 115	Amy Hargrave-Ellis	9	27
---------	-----------------------------------	-----------------------	--------------------	---	----

Integrated Reading and Writing

IRW 115	Introduction to College Reading and Composition (6)	English 5-6: Reading/ Writing 115	Don Rose	22	132
---------	---	-----------------------------------	----------	----	-----

2nd Semester (PCC Spring Term)

Art

ART 115	Basic Design - 2D Foundations (3)	Advanced Art/ ART 115	Amy Hargrave-Ellis	7	21
---------	-----------------------------------	-----------------------	--------------------	---	----

Integrated Reading and Writing

IRW 115	Introduction to College Reading and Composition (6)	English 5-6: Reading/ Writing 115	Jayme Causey	9	54
---------	---	-----------------------------------	--------------	---	----

IRW 115	Introduction to College Reading and Composition (6)	English 5-6: Reading/ Writing 115	Don Rose	14	84
---------	---	-----------------------------------	----------	----	----

Math

MTH 95	Intermediate Algebra (4)	Pre-Calculus 1/2	Adam Taylor	4	16
--------	--------------------------	------------------	-------------	---	----

Total: 76 378

Unduplicated Enrollment: 69

Source	Demographic							
	American Indian/ Alaska Native	Asian	Black/ African American	Hispanic/ Latino	Multi-Racial	Native Hawaiian/ Pacific Islander	White	Not reported
2020-21 PCC Dual Credit Admission Application	0.0%	1.4%	13.0%	18.8%	8.7%	0.0%	36.2%	21.7%
2019-20 Jefferson High School Oregon Report Card	0.5%	1.0%	32.0%	20.0%	13.0%	1.0%	32.0%	0.0%
2019-20 Portland SD 1J Oregon Report Card	0.5%	3.0%	15.0%	27.0%	11.0%	0.0%	43.0%	0.0%

2020-2021 Articulation Details by Discipline

PCC Subject Area Courses under Articulation	High School Course Title	Instructor	Duplicated Enrollment	Credits Earned
--	--------------------------	------------	--------------------------	-------------------

Jesuit High School

Yearlong (PCC Spring Term)

Biology

BI 211	Principles of Biology (5)	Honors Biology	Lara Shamieh	81	405
--------	---------------------------	----------------	--------------	----	-----

English

ENG 104	Intro to Literature- Fiction (4)	AP English Lit & Comp	Megan Mathes	54	216
---------	----------------------------------	-----------------------	--------------	----	-----

Math

MTH 111	College Algebra (5)	Pre-Calculus	Vaughn Langsdorf	19	95
MTH 111	College Algebra (5)	Pre-Calculus	Patty White	45	225

Writing

WR 122	English Composition (4)	AP English Lit & Comp	Megan Mathes	54	216
--------	-------------------------	-----------------------	--------------	----	-----

Total: 253 1,157

Unduplicated Enrollment: 174

Classes that could not be offered this year because of remote learning due to COVID 19

High School Instructor	PCC Course	PCC Credits
Lara Shamieh	BI 212	5

Source	Demographic							
	American Indian/ Alaska Native	Asian	Black/ African American	Hispanic/ Latino	Multi-Racial	Native Hawaiian/ Pacific Islander	White	Not reported
2020-21 PCC Dual Credit Admission Application	0.0%	18.4%	0.0%	1.1%	10.9%	0.6%	50.6%	18.4%

2020-2021 Articulation Details by Discipline

PCC Subject Area Courses under Articulation	High School Course Title	Instructor	Duplicated Enrollment	Credits Earned
--	--------------------------	------------	--------------------------	-------------------

Lake Oswego High School

Quarter 1 (PCC Fall Term)

Computer Science

CS 160	Exploring Computer Science (4)	Intro to Programming	Gayathri Iyer	15	60
--------	--------------------------------	----------------------	---------------	----	----

Quarter 2 (PCC Winter Term)

Computer Science

CS 160	Exploring Computer Science (4)	Intro to Programming	Gayathri Iyer	12	48
--------	--------------------------------	----------------------	---------------	----	----

CS 161	Computer Science I (4)	Computer Science I	Gayathri Iyer	12	48
--------	------------------------	--------------------	---------------	----	----

Quarter 3, Q1/3 (PCC Spring Term)

Computer Science

CS 160	Exploring Computer Science (4)	Intro to Programming	Gayathri Iyer	10	40
--------	--------------------------------	----------------------	---------------	----	----

General Science

GS 108	Physical Science- Oceanography (4)	Oceanography	Steve Huss	31	124
--------	------------------------------------	--------------	------------	----	-----

Writing

WR 121	English Composition (4)	English Composition	Ellen King	0	0
--------	-------------------------	---------------------	------------	---	---

Quarter 4, Q2/4 (PCC Spring Term)

Computer Science

CS 162	Computer Science II (4)	Computer Science II	Gayathri Iyer	11	44
--------	-------------------------	---------------------	---------------	----	----

General Science

GS 108	Physical Science- Oceanography (4)	Oceanography	Steve Huss	6	24
--------	------------------------------------	--------------	------------	---	----

Total: 97 388

Unduplicated Enrollment: 84

Classes that could not be offered this year because of remote learning due to COVID 19

High School Instructor	PCC Course	PCC Credits
Keith Grosse	ENGR 100	1

Source	Demographic							
	American Indian/ Alaska Native	Asian	Black/ African American	Hispanic/ Latino	Multi-Racial	Native Hawaiian/ Pacific Islander	White	Not reported
2020-21 PCC Dual Credit Admission Application	0.0%	20.0%	0.0%	0.0%	5.9%	1.2%	62.4%	10.6%
2019-20 Lake Oswego High School Oregon Report Card	0.5%	12.0%	1.0%	8.0%	7.0%	0.5%	71.0%	0.0%
2019-20 Lake Oswego SD 7J Oregon Report Card	0.5%	11.0%	0.5%	7.0%	9.0%	0.5%	72.0%	0.0%

2020-2021 Articulation Details by Discipline

PCC Subject Area
Courses under Articulation

High School Course Title

Instructor

Duplicated
Enrollment

Credits
Earned

Lakeridge High School

Quarter 1 (PCC Fall Term)

Math

MTH 243	Statistics I (5)	AP Statistics	Derek Abbott	41	205
---------	------------------	---------------	--------------	----	-----

Quarter 2 (PCC Winter Term)

Math

MTH 243	Statistics I (5)	AP Statistics	Derek Abbott	21	105
---------	------------------	---------------	--------------	----	-----

Quarter 3, Q1/3 (PCC Spring Term)

Environmental Studies

ESR 171	Env. Science - Biological Perspectives (4)	AP Environmental Science	Sarah Mock	34	136
ESR 173	Env. Science - Geological Perspectives (4)	AP Environmental Science	Sarah Mock	34	136

Math

MTH 244	Statistics II (4)	AP Statistics	Derek Abbott	38	152
---------	-------------------	---------------	--------------	----	-----

Writing

WR 122	English Composition (4)	AP English Lang & Comp	Joanna Stein	28	112
--------	-------------------------	------------------------	--------------	----	-----

Quarter 4, Q2/4 (PCC Spring Term)

Journalism

J 103	Introduction to Media Writing (4)	Newspaper	Erin Schloetter	5	20
-------	-----------------------------------	-----------	-----------------	---	----

Math

MTH 244	Statistics II (4)	AP Statistics	Derek Abbott	22	88
---------	-------------------	---------------	--------------	----	----

Music

MUS 221A	Chamber Chorus, Chamber Chorus (1)	A Cappella Choir	William Campbell	11	11
MUS 221B	Chamber Chorus, Chamber Chorus (1)	A Cappella Choir	William Campbell	2	2

Writing

WR 122	English Composition (4)	AP English Lang & Comp	Joanna Stein	10	40
--------	-------------------------	------------------------	--------------	----	----

Total: 246 1,007

Unduplicated Enrollment: 142

Source	Demographic							
	American Indian/ Alaska Native	Asian	Black/ African American	Hispanic/ Latino	Multi-Racial	Native Hawaiian/ Pacific Islander	White	Not reported
2020-21 PCC Dual Credit Admission Application	0.0%	5.0%	0.7%	2.1%	8.6%	0.0%	74.3%	11.4%
2019-20 Lakeridge High School Oregon Report Card	0.5%	7.0%	1.0%	7.0%	9.0%	0.5%	76.0%	0.0%
2019-20 Lake Oswego SD 7J Oregon Report Card	0.5%	11.0%	0.5%	7.0%	9.0%	0.5%	72.0%	0.0%

2020-2021 Articulation Details by Discipline

PCC Subject Area Courses under Articulation	High School Course Title	Instructor	Duplicated Enrollment	Credits Earned
--	--------------------------	------------	--------------------------	-------------------

Leodis V. McDaniel High School *(formerly known as Madison High School)*

1st Semester (PCC Winter Term)

Education

ED 100	Intro to Education for Paraeducators (3)	Introduction to Education	Nicola Onnis	0	0
--------	--	---------------------------	--------------	---	---

Math

MTH 111	College Algebra (5)	Pre-Calculus	Thuy Nguyen	38	190
---------	---------------------	--------------	-------------	----	-----

2nd Semester (PCC Spring Term)

Bioscience Technology

BIT 102	Current Topics in Bioscience Tech (2)	Medical Interventions	Erik Mellgren	15	30
---------	---------------------------------------	-----------------------	---------------	----	----

Total: 53 220

Unduplicated Enrollment: 48

Classes that could not be offered this year because of remote learning due to COVID 19

High School Instructor	PCC Course	PCC Credits
Frank Fields	EET 101A	1
	EET 121	4
Thuy Nguyen	MTH 112	5

Source	Demographic							
	American Indian/ Alaska Native	Asian	Black/ African American	Hispanic/ Latino	Multi-Racial	Native Hawaiian/ Pacific Islander	White	Not reported
2020-21 PCC Dual Credit Admission Application	0.0%	33.3%	6.3%	0.0%	6.3%	0.0%	35.4%	18.8%
2019-20 Leodis V McDaniel High School Oregon Report Card	1.0%	15.0%	14.0%	25.0%	9.0%	2.0%	34.0%	0.0%
2019-20 Portland SD 1J Oregon Report Card	0.5%	3.0%	15.0%	27.0%	11.0%	0.0%	43.0%	0.0%

2020-2021 Articulation Details by Discipline

PCC Subject Area Courses under Articulation	High School Course Title	Instructor	Duplicated Enrollment	Credits Earned
--	--------------------------	------------	--------------------------	-------------------

Liberty High School

Quarter 1 (PCC Fall Term)

Early Childhood Education

ECE 120	Intro to Early Childhood Ed & Fam Studies (3)	Child Development 1	Kristen Rekow	2	6
---------	---	---------------------	---------------	---	---

History

HST 201	History of US to 1840 (4)	AP United States History	Adam Mahlum	34	136
---------	---------------------------	--------------------------	-------------	----	-----

Quarter 2 (PCC Winter Term)

History

HST 201	History of US to 1840 (4)	AP United States History	Adam Mahlum	18	72
HST 240	Oregon History (4)	History of Oregon	Adam Mahlum	14	56
HST 285	The Holocaust (4)	The History of the Holocaust	Adam Mahlum	10	40

Quarter 3, Q1/3 (PCC Spring Term)

Early Childhood Education

ECE 120	Intro to Early Childhood Ed & Fam Studies (3)	Child Development 1	Kristen Rekow	0	0
---------	---	---------------------	---------------	---	---

History

HST 202	History of the US 1840-1914 (4)	AP United States History	Adam Mahlum	28	112
HST 203	History of US 1914-present (4)	AP United States History	Adam Mahlum	28	112

Physics

PHY 201	General Physics (4)	AP Physics 1	Lori Shaaban	1	4
PHY 211	General Physics (Calculus) (5)	AP Physics C	Lori Shaaban	1	5

Quarter 4, Q2/4 (PCC Spring Term)

Early Childhood Education

ECE 120	Intro to Early Childhood Ed & Fam Studies (3)	Child Development 1	Kristen Rekow	5	15
---------	---	---------------------	---------------	---	----

Engineering

ENGR 100	Engineering (1)	Principles of Engineering	Sally Reyes	13	13
----------	-----------------	---------------------------	-------------	----	----

History

HST 202	History of the US 1840-1914 (4)	AP United States History	Adam Mahlum	15	60
HST 203	History of US 1914-present (4)	AP United States History	Adam Mahlum	15	60
HST 240	Oregon History (4)	History of Oregon	Adam Mahlum	12	48
HST 285	The Holocaust (4)	The History of the Holocaust	Adam Mahlum	18	72

Theater Arts

TA 141	Fundament. of Acting Techniques (4)	Advanced Theatre	Janet Van Wess	7	28
--------	-------------------------------------	------------------	----------------	---	----

2020-2021 Articulation Details by Discipline

PCC Subject Area
Courses under Articulation

High School Course Title

Instructor

Duplicated
Enrollment

Credits
Earned

Liberty High School

Yearlong (PCC Spring Term)

Early Childhood Education

ECE 121	Observation and Guidance (3)	Child Development 3	Kristen Rekow	2	6
---------	------------------------------	---------------------	---------------	---	---

Total: 223 845

Unduplicated Enrollment: 101

Classes that could not be offered this year because of remote learning due to COVID 19

High School Instructor	PCC Course	PCC Credits
Ramona Toth	MP 111	4

Source	Demographic							
	American Indian/ Alaska Native	Asian	Black/ African American	Hispanic/ Latino	Multi-Racial	Native Hawaiian/ Pacific Islander	White	Not reported
2020-21 PCC Dual Credit Admission Application	1.0%	12.4%	2.1%	4.1%	6.2%	1.0%	55.7%	17.5%
2019-20 Liberty High School Oregon Report Card	1.0%	6.0%	2.0%	35.0%	6.0%	1.0%	48.0%	0.0%
2019-20 Hillsboro SD 1J Oregon Report Card	1.0%	6.0%	2.0%	35.0%	6.0%	1.0%	48.0%	0.0%

2020-2021 Articulation Details by Discipline

PCC Subject Area
Courses under Articulation

High School Course Title

Instructor

Duplicated
Enrollment

Credits
Earned

Lincoln High School

Yearlong (PCC Spring Term)

Business Administration

BA 101	Intro to Business Administration (4)	IB Business Management SL	Ronald Waugh	12	48
BA 218	Personal Finance (4)	Personal Finance	Henry Hooper	3	12
Total:				15	60

Unduplicated Enrollment: 15

Source	Demographic							
	American Indian/ Alaska Native	Asian	Black/ African American	Hispanic/ Latino	Multi- Racial	Native Hawaiian/ Pacific Islander	White	Not reported
2020-21 PCC Dual Credit Admission Application	0.0%	6.7%	0.0%	0.0%	0.0%	0.0%	93.3%	0.0%
2019-20 Lincoln High School Oregon Report Card	0.5%	10.0%	1.0%	10.0%	9.0%	0.5%	69.0%	0.0%
2019-20 Portland SD 1J Oregon Report Card	0.5%	3.0%	15.0%	27.0%	11.0%	0.0%	43.0%	0.0%

2020-2021 Articulation Details by Discipline

PCC Subject Area Courses under Articulation	High School Course Title	Instructor	Duplicated Enrollment	Credits Earned
--	--------------------------	------------	--------------------------	-------------------

McMinnville High School

Q1/3 (PCC Spring Term)

Environmental Studies

ESR 171	Env. Science - Biological Perspectives (4)	AP Environmental Science	Laura Syring	1	4
Total:				1	4

Unduplicated Enrollment: 1

2020-2021 Articulation Details by Discipline

PCC Subject Area Courses under Articulation	High School Course Title	Instructor	Duplicated Enrollment	Credits Earned
--	--------------------------	------------	--------------------------	-------------------

Metropolitan Learning Center (MLC)

2nd Semester (PCC Spring Term)

Writing				
WR 121	English Composition (4)	College Writing	Liz Buelow	4
				16
			Total:	4
				16
Unduplicated Enrollment: 4				

Note: Demographics not displayed when unduplicated headcount is 10 or fewer students.

2020-2021 Articulation Details by Discipline

PCC Subject Area Courses under Articulation	High School Course Title	Instructor	Duplicated Enrollment	Credits Earned
--	--------------------------	------------	--------------------------	-------------------

Mountainside High School

Quarter 1 (PCC Fall Term)

Music

MUS 111	Music Theory I - Part I (3)	Music Theory	Jeremy Zander	11	33
---------	-----------------------------	--------------	---------------	----	----

Quarter 2 (PCC Winter Term)

Music

MUS 112	Music Theory I - Part 2 (3)	Music Theory	Jeremy Zander	10	30
---------	-----------------------------	--------------	---------------	----	----

1st Semester (PCC Winter Term)

American Sign Language

ASL 102	First-Year ASL II (4)	ASL Year 2	Yvonne Nicolay	17	68
---------	-----------------------	------------	----------------	----	----

Total: 38 131

Unduplicated Enrollment: 29

Source	Demographic							
	American Indian/ Alaska Native	Asian	Black/ African American	Hispanic/ Latino	Multi-Racial	Native Hawaiian/ Pacific Islander	White	Not reported
2020-21 PCC Dual Credit Admission Application	0.0%	6.9%	0.0%	6.9%	13.8%	0.0%	69.0%	3.4%
2019-20 Mountainside High School Oregon Report Card	0.5%	13.0%	2.0%	14.0%	9.0%	1.0%	61.0%	0.0%
2019-20 Beaverton SD 48J Oregon Report Card	0.5%	17.0%	3.0%	25.0%	8.0%	1.0%	46.0%	0.0%

2020-2021 Articulation Details by Discipline

PCC Subject Area
Courses under Articulation

High School Course Title

Instructor

Duplicated
Enrollment

Credits
Earned

Newberg High School

Quarter 1 (PCC Fall Term)

Math

PCC Subject Area	High School Course Title	Instructor	Duplicated Enrollment	Credits Earned
MTH 111 College Algebra (5)	Pre-Calculus A	Angela Stutzman	21	105

Quarter 2 (PCC Winter Term)

Math

MTH 111 College Algebra (5)	Pre-Calculus A	Angela Stutzman	30	150
MTH 251 Calculus I (4)	AP Calculus A	Pete Rusaw	22	88

Quarter 3, Q1/3 (PCC Spring Term)

Math

MTH 112 Elementary Functions (5)	Pre-Calculus B	Angela Stutzman	12	60
MTH 243 Statistics I (5)	AP Statistics	Mike Blackwell	23	115
MTH 252 Calculus II (4)	AP Calculus B	Pete Rusaw	17	68

Spanish

SPA 201 2nd year Spanish – 1 st Term (4)	Spanish 4A/B	Paco Benetti	9	36
---	--------------	--------------	---	----

Quarter 4, Q2/4 (PCC Spring Term)

Math

MTH 112 Elementary Functions (5)	Pre-Calculus B	Angela Stutzman	35	175
----------------------------------	----------------	-----------------	----	-----

Spanish

SPA 201 2nd year Spanish – 1 st Term (4)	Spanish 4A/B	Paco Benetti	10	40
---	--------------	--------------	----	----

Total: 179 837

Unduplicated Enrollment: 107

✧ PCC Math Instructor of Record: Bret Rickman

Classes that could not be offered this year because of remote learning due to COVID 19

High School Instructor	PCC Course	PCC Credits
Peter Siderius	LAT 106	4
	LAT 109	3

Source	Demographic							
	American Indian/ Alaska Native	Asian	Black/ African American	Hispanic/ Latino	Multi-Racial	Native Hawaiian/ Pacific Islander	White	Not reported
2020-21 PCC Dual Credit Admission Application	0.0%	5.9%	0.0%	3.0%	5.9%	0.0%	73.3%	11.9%
2019-20 Newberg High School Oregon Report Card	1.0%	3.0%	1.0%	20.0%	4.0%	0.5%	71.0%	0.0%
2019-20 Newberg SD 29J Oregon Report Card	1.0%	2.0%	1.0%	21.0%	5.0%	0.5%	71.0%	0.0%

2020-2021 Articulation Details by Discipline

PCC Subject Area Courses under Articulation	High School Course Title	Instructor	Duplicated Enrollment	Credits Earned
--	--------------------------	------------	--------------------------	-------------------

Park Academy

Yearlong (PCC Spring Term)

Math

MTH 95	Intermediate Algebra (4)	Intermediate College Algebra	Margaret Mart	5	20
			Total:	5	20

Unduplicated Enrollment: 5

Note: Demographics not displayed when unduplicated headcount is 10 or fewer students.

2020-2021 Articulation Details by Discipline

PCC Subject Area Courses under Articulation	High School Course Title	Instructor	Duplicated Enrollment	Credits Earned
--	--------------------------	------------	--------------------------	-------------------

Riverdale High School

Trimester 1 (PCC Fall Term)

Writing

WR 121	English Composition (4)	English Composition	Holly Finnerty	17	68
Total:				17	68

Unduplicated Enrollment: 17

Source	Demographic							
	American Indian/ Alaska Native	Asian	Black/ African American	Hispanic/ Latino	Multi- Racial	Native Hawaiian/ Pacific Islander	White	Not reported
2020-21 PCC Dual Credit Admission Application	0.0%	5.9%	0.0%	0.0%	0.0%	0.0%	88.2%	5.9%
2019-20 Riverdale High School Oregon Report Card	0.5%	4.0%	1.0%	6.0%	8.0%	0.0%	81.0%	0.0%
2019-20 Riverdale SD 51J Oregon Report Card	0.5%	5.0%	1.0%	6.0%	8.0%	0.5%	80.0%	0.0%

2020-2021 Articulation Details by Discipline

PCC Subject Area Courses under Articulation	High School Course Title	Instructor	Duplicated Enrollment	Credits Earned
--	--------------------------	------------	--------------------------	-------------------

Roosevelt High School

1st Semester (PCC Winter Term)

Computer Aided Design & Drafting

CADD 105 Digital Design and Fab Fundamentals (3)	Principles of Engineering	Randy Scott	4	12
--	---------------------------	-------------	---	----

Engineering

ENGR 100 Engineering (1)	Introduction to Engineering	Randy Scott	9	9
--------------------------	-----------------------------	-------------	---	---

Math

MTH 111 ✧ College Algebra (5)	College Algebra	Brandon Morehouse	9	45
MTH 111 ✧ College Algebra (5)	College Algebra	Richard Cha	16	80

2nd Semester (PCC Spring Term)

Computer Aided Design & Drafting

CADD 105 Digital Design and Fab Fundamentals (3)	Principles of Engineering	Randy Scott	0	0
--	---------------------------	-------------	---	---

Engineering

ENGR 100 Engineering (1)	Introduction to Engineering	Randy Scott	3	3
--------------------------	-----------------------------	-------------	---	---

Math

MTH 111 ✧ College Algebra (5)	College Algebra	Brandon Morehouse	19	95
MTH 111 ✧ College Algebra (5)	College Algebra	Richard Cha	6	30

Total: 66 274

Unduplicated Enrollment: 65

✧ PCC Math Instructor of Record: Bret Rickman

Classes that could not be offered this year because of remote learning due to COVID 19

High School Instructor	PCC Course	PCC Credits
Jo Lane	TA 111	4
	TA 141	4

Source	Demographic							
	American Indian/ Alaska Native	Asian	Black/ African American	Hispanic/ Latino	Multi-Racial	Native Hawaiian/ Pacific Islander	White	Not reported
2020-21 PCC Dual Credit Admission Application	0.0%	4.6%	9.2%	3.1%	9.2%	1.5%	44.6%	27.7%
2019-20 Roosevelt High School Oregon Report Card	1.0%	3.0%	17.0%	35.0%	8.0%	3.0%	33.0%	0.0%
2019-20 Portland SD 1J Oregon Report Card	0.5%	3.0%	15.0%	27.0%	11.0%	0.0%	43.0%	0.0%

2020-2021 Articulation Details by Discipline

PCC Subject Area
Courses under Articulation

High School Course Title

Instructor

Duplicated
Enrollment

Credits
Earned

Sabin - Schellenberg Center

Q1/3 (PCC Spring Term)

Architectural Design & Drafting

ARCH 101	Intro to Residential Design (3)	Architecture & Design 1	Robert Parker	19	57
ARCH 124	Intro to Building Systems (3)	Architecture & Design 1	Robert Parker	18	54

Computer Aided Design & Drafting

CADD 105	Digital Design and Fab Fundamentals (3)	Architecture & Design 1	Robert Parker	18	54
----------	---	-------------------------	---------------	----	----

Fire Protection

FP 101	Principles of Emergency Services (3)	Principles of Emergency Services	Heather Stadelman	12	36
--------	--------------------------------------	----------------------------------	-------------------	----	----

Q2/4 (PCC Spring Term)

Architectural Design & Drafting

ARCH 200	Principles of Architectural Design (4)	Architecture & Design 2	Robert Parker	7	28
ARCH 202	Commercial Studio (4)	Architecture & Design 2	Robert Parker	7	28

Quarter 1 (PCC Fall Term)

Architectural Design & Drafting

ARCH 101	Intro to Residential Design (3)	Architecture & Design 1	Robert Parker	0	0
ARCH 124	Intro to Building Systems (3)	Architecture & Design 1	Robert Parker	0	0

Computer Aided Design & Drafting

CADD 105	Digital Design and Fab Fundamentals (3)	Architecture & Design 1	Robert Parker	0	0
----------	---	-------------------------	---------------	---	---

Total: 81 257

Unduplicated Enrollment: 38

Classes that could not be offered this year because of remote learning due to COVID 19

High School Instructor	PCC Course	PCC Credits
Robert Parker	ARCH 237	3
	ARCH 247	3
	CADD 126	3

Source	Demographic							
	American Indian/ Alaska Native	Asian	Black/ African American	Hispanic/ Latino	Multi-Racial	Native Hawaiian/ Pacific Islander	White	Not reported
2020-21 PCC Dual Credit Admission Application	2.6%	5.3%	2.6%	0.0%	2.6%	0.0%	76.3%	10.5%

2020-2021 Articulation Details by Discipline

PCC Subject Area Courses under Articulation	High School Course Title	Instructor	Duplicated Enrollment	Credits Earned
--	--------------------------	------------	--------------------------	-------------------

Sherwood High School

Quarter 1 (PCC Fall Term)

Anthropology

ATH 102	Introduction to Archaeology and Prehistory (4)	Archaeology & Prehistory	Brian Trostel	17	68
---------	--	--------------------------	---------------	----	----

Biology

BI 121	Introduction to Human Anatomy & Physiology I (4)	Anatomy & Physiology	Laurie Almeida	67	268
--------	--	----------------------	----------------	----	-----

Computer Information Systems

CIS 122	Introduction to Programming Logic (4)	Computer Science/ JAVA	Terrel Smith	4	16
CIS 145	Microcomputer Hardware and Troubleshooting (4)	Computer Science	Terrel Smith	0	0

Math

MTH 111	College Algebra (5)	Pre-Calculus	Corinne Hutchinson	54	270
MTH 111	College Algebra (5)	Pre-Calculus	Heather Raddatz	44	220

Writing

WR 121	English Composition (4)	Composition 2 / WR 121	Matthew Kolbet	58	232
--------	-------------------------	------------------------	----------------	----	-----

Quarter 2 (PCC Winter Term)

Anthropology

ATH 102	Introduction to Archaeology and Prehistory (4)	Archaeology & Prehistory	David Ellis (PCC)	15	60
---------	--	--------------------------	-------------------------------------	----	----

Computer Information Systems

CIS 122	Introduction to Programming Logic (4)	Computer Science/ JAVA	Terrel Smith	4	16
---------	---------------------------------------	------------------------	--------------	---	----

Math

MTH 112	Elementary Functions (5)	Trigonometry	Corinne Hutchinson	55	275
MTH 112	Elementary Functions (5)	Trigonometry	Heather Raddatz	11	55
MTH 251	Calculus I (4)	AP Calculus AB	Heather Raddatz	51	204

Writing

WR 121	English Composition (4)	Composition 2 / WR 121	Matthew Kolbet	60	240
--------	-------------------------	------------------------	----------------	----	-----

Quarter 3 (PCC Spring Term)

Anthropology

ATH 102	Intro to Archaeology and Prehistory (4)	Archaeology & Prehistory	Mary Courtis (PCC)	14	56
---------	---	--------------------------	--------------------------------------	----	----

Biology

BI 122	Intro to Human Anatomy & Physiology II (4)	Anatomy & Physiology	Laurie Almeida	66	264
--------	--	----------------------	----------------	----	-----

2020-2021 Articulation Details by Discipline

PCC Subject Area Courses under Articulation	High School Course Title	Instructor	Duplicated Enrollment	Credits Earned
--	--------------------------	------------	--------------------------	-------------------

Sherwood High School

Quarter 3 (PCC Spring Term)

Computer Aided Design & Drafting

CADD 160	Drafting Fundamentals (4)	Engineering 3: Advanced Drafting & Design	Clark Farrand	16	64
----------	---------------------------	---	---------------	----	----

Computer Information Systems

CIS 122	Introduction to Programming Logic (4)	Computer Science/ JAVA	Terrel Smith	4	16
CIS 145	Microcomputer Hardware and Troubleshooting (4)	Computer Science	Terrel Smith	0	0

Math

MTH 111	College Algebra (5)	Pre-Calculus	Corinne Hutchinson	54	270
MTH 111	College Algebra (5)	Pre-Calculus	Heather Raddatz	14	70

Writing

WR 121	English Composition (4)	Composition 2 / WR 121	Matthew Kolbet	35	140
--------	-------------------------	------------------------	----------------	----	-----

Quarter 4 (PCC Spring Term)

Computer Aided Design & Drafting

CADD 105	Digital Design and Fabrication Fundamentals (3)	Engineering 4: Advanced Digital Fabrication	Clark Farrand	0	0
CADD 160	Drafting Fundamentals (4)	Engineering 3: Advanced Drafting & Design	Clark Farrand	1	4

Computer Information Systems

CIS 122	Introduction to Programming Logic (4)	Computer Science/ JAVA	Terrel Smith	10	40
CIS 145	Microcomputer Hardware and Troubleshooting (4)	Computer Science	Terrel Smith	1	4

Engineering

ENGR 100	Engineering (1)	Engineering 2: Rapid Prototyping	Clark Farrand	12	12
----------	-----------------	----------------------------------	---------------	----	----

Math

MTH 112	Elementary Functions (5)	Trigonometry	Corinne Hutchinson	76	380
MTH 112	Elementary Functions (5)	Trigonometry	Heather Raddatz	17	85
MTH 252	Calculus II (4)	AP Calculus AB	Heather Raddatz	48	192

Writing

WR 122	English Composition (4)	WR 122	Matthew Kolbet	31	124
--------	-------------------------	--------	----------------	----	-----

Trimester 1 (PCC Fall Term)

Biology

BI 101	Biology (4)	AP Biology	Lance Thurman	77	308
--------	-------------	------------	---------------	----	-----

2020-2021 Articulation Details by Discipline

PCC Subject Area
Courses under Articulation

High School Course Title

Instructor

Duplicated
Enrollment

Credits
Earned

Sherwood High School

Trimester 1 (PCC Fall Term)

History

HST 201	History of US to 1840 (4)	AP US History	Jeff Wilson	111	444
---------	---------------------------	---------------	-------------	-----	-----

Trimester 2 (PCC Winter Term)

Biology

BI 102	Biology (4)	AP Biology	Lance Thurman	73	292
--------	-------------	------------	---------------	----	-----

History

HST 202	History of the US 1840-1914 (4)	AP US History	Jeff Wilson	105	420
---------	---------------------------------	---------------	-------------	-----	-----

Trimester 3 (PCC Spring Term)

Biology

BI 103	Biology (4)	AP Biology	Lance Thurman	78	312
--------	-------------	------------	---------------	----	-----

History

HST 203	History of US 1914-present (4)	Sherwood High School	Jeff Wilson	97	388
---------	--------------------------------	----------------------	-------------	----	-----

Total: 1,380 5,809

Unduplicated Enrollment: 419

Classes that could not be offered this year because of remote learning due to COVID 19

High School Instructor	PCC Course	PCC Credits
Allison Meadows	LAT 106	4
	LAT 109	3
	WLD 111	4
	WLD 112	4
	WLD 271	4
David Little	WLD 111	4
	WLD 112	4
Jon Dickover	BCT 106	6
	BCT 120	3
	BCT 121	3
	BCT 244	2
Liz Barrett	MM 230	4

Demographic

Source	American Indian/ Alaska Native	Asian	Black/ African American	Hispanic/ Latino	Multi-Racial	Native Hawaiian/ Pacific Islander	White	Not reported
2020-21 PCC Dual Credit Admission Application	0.0%	3.6%	0.5%	4.6%	8.5%	1.0%	66.6%	15.3%
2019-20 Sherwood High School Oregon Report Card	1.0%	3.0%	1.0%	11.0%	6.0%	1.0%	79.0%	0.0%
2019-20 Sherwood SD 88J Oregon Report Card	0.5%	3.0%	1.0%	11.0%	6.0%	0.5%	79.0%	0.0%

2020-2021 Articulation Details by Discipline

PCC Subject Area
Courses under Articulation

High School Course Title

Instructor

Duplicated
Enrollment

Credits
Earned

Southridge High School

Quarter 2 (PCC Winter Term)

Math

MTH 251 ✧	Calculus I (4)	IB Higher Level Math 1	Scott Baranick	21	84
-----------	----------------	------------------------	----------------	----	----

Q1/3 (PCC Spring Term)

Business Administration

BA 101	Introduction to Business Administration (4)	Business Leadership	Tammy Mullen	3	12
--------	---	---------------------	--------------	---	----

Quarter 4 (PCC Spring Term)

Math

MTH 252 ✧	Calculus II (4)	IB Higher Level Math 2	Scott Baranick	21	84
-----------	-----------------	------------------------	----------------	----	----

1st Semester (PCC Winter Term)

American Sign Language

ASL 101	First-Year ASL I (4)	First-Year ASL	Yvonne Nicolay	6	24
ASL 102	First-Year ASL II (4)	Second-Year ASL	Yvonne Nicolay	13	52

Business Administration

BA 205	Business Communication using Tech. (4)	Marketing 2	Buck Buckhalter	17	68
--------	--	-------------	-----------------	----	----

2nd Semester (PCC Spring Term)

American Sign Language

ASL 101	First-Year ASL I (4)	First-Year ASL	Yvonne Nicolay	5	20
ASL 103	First-Year ASL III (4)	Third-Year ASL	Yvonne Nicolay	7	28
ASL 201	ASL IV (4)	Fourth-Year ASL	Yvonne Nicolay	4	16

Total: 97 388

✧ PCC Math Instructor of Record: Bret Rickman

Unduplicated Enrollment: 73

Classes that could not be offered this year because of remote learning due to COVID 19

High School Instructor	PCC Course	PCC Credits
Dan Velasquez	CIS 122	4
James Fewer	TA 111	4
	TA 141	4
Katie Wilkinson	MTH 111	5
	MTH 112	5
Lisa Mercer	MTH 111	5
	MTH 112	5
Staci Quimby	MTH 243	5
	MTH 244	4
Stacy Mix	HE 112	1

Demographic

Source	American Indian/Alaska Native	Asian	Black/African American	Hispanic/Latino	Multi-Racial	Native Hawaiian/Pacific Islander	White	Not reported
2020-21 PCC Dual Credit Admission Application	0.0%	4.2%	0.0%	6.9%	11.1%	0.0%	65.3%	12.5%
2019-20 Southridge High School Oregon Report Card	1.0%	6.0%	4.0%	31.0%	7.0%	1.0%	50.0%	0.0%
2019-20 Beaverton SD 48J Oregon Report Card	0.5%	17.0%	3.0%	25.0%	8.0%	1.0%	46.0%	0.0%

2020-2021 Articulation Details by Discipline

PCC Subject Area
Courses under Articulation

High School Course Title

Instructor

Duplicated
Enrollment

Credits
Earned

St. Helens High School

Quarter 1 (PCC Fall Term)

Early Childhood Education

ECE 121	Observation and Guidance (3)	Child Development 2	Rachael Sara	1	3
---------	------------------------------	---------------------	--------------	---	---

1st Semester (PCC Winter Term)

Music

MUS 201	Introduction to Music and Its Literature (3)	Music History	Eric Stearns	1	3
---------	--	---------------	--------------	---	---

2nd Semester (PCC Spring Term)

Early Childhood Education

ECE 120	Intro to Early Childhood Ed & Fam Studies (3)	Early Childhood Education	Rachael Sara	1	3
---------	---	---------------------------	--------------	---	---

Yearlong (PCC Spring Term)

Music

MUS 220A	Chorus I (1)	Chor Leonis	Eric Stearns	0	0
----------	--------------	-------------	--------------	---	---

Total: 3 9

Unduplicated Enrollment: 2

Classes that could not be offered this year because of remote learning due to COVID 19

High School Instructor	PCC Course	PCC Credits
Bonnie Adams	WLD 111	4
Eric Stearns	MUS 202	3
Jay Groom	AM 100	4
	AM 111	4
	AM 151	4
	AM 161	4
Joe Mauck	BCT 103	3
	BCT 106	3
	BCT 211	6
	BCT 218	2
	CADD 126	3
	CADD 160	4
	CADD 175	3
Noelle Freshner	MUS 195A-B	2

Note: Demographics not displayed when unduplicated headcount is 10 or fewer students.

2020-2021 Articulation Details by Discipline

PCC Subject Area Courses under Articulation	High School Course Title	Instructor	Duplicated Enrollment	Credits Earned
--	--------------------------	------------	--------------------------	-------------------

Sunset High School

Quarter 1 (PCC Fall Term)

College Success & Career Guidance

CG 130	Today's Careers (2)	Personal Finance	Jeff Smith	43	86
--------	---------------------	------------------	------------	----	----

Quarter 2 (PCC Winter Term)

College Success & Career Guidance

CG 130	Today's Careers (2)	Personal Finance	Jeff Smith	36	72
--------	---------------------	------------------	------------	----	----

Quarter 3 (PCC Spring Term)

College Success & Career Guidance

CG 130	Today's Careers (2)	Personal Finance	Jeff Smith	39	78
--------	---------------------	------------------	------------	----	----

Quarter 4 (PCC Spring Term)

College Success & Career Guidance

CG 130	Today's Careers (2)	Personal Finance	Jeff Smith	23	46
--------	---------------------	------------------	------------	----	----

Trimester 3 (PCC Spring Term)

Management & Supervisory Development

MSD 107	Organizations and People (3)	Marketing 2	Vanessa McDonnell	6	18
---------	------------------------------	-------------	-------------------	---	----

1st Semester (PCC Winter Term)

Business Administration

BA 223	Principles of Marketing (4)	IB Business Management	Nicole Taylo	11	44
--------	-----------------------------	------------------------	--------------	----	----

Management & Supervisory Development

MSD 107	Organizations and People (3)	Marketing 2	Vanessa McDonnell	21	63
---------	------------------------------	-------------	-------------------	----	----

2nd Semester (PCC Spring Term)

Business Administration

BA 101	Intro to Business Administration (4)	IB Business Management	Nicole Taylo	29	116
BA 223	Principles of Marketing (4)	IB Business Management	Nicole Taylo	3	12

Total: 211 535

Unduplicated Enrollment: 191

Source	Demographic							
	American Indian/ Alaska Native	Asian	Black/ African American	Hispanic/ Latino	Multi-Racial	Native Hawaiian/ Pacific Islander	White	Not reported
2020-21 PCC Dual Credit Admission Application	0.0%	25.9%	0.5%	1.1%	9.2%	0.5%	43.2%	19.5%
2019-20 Sunset High School Oregon Report Card	0.5%	25.0%	1.0%	11.0%	7.0%	1.0%	55.0%	0.0%
2019-20 Beaverton SD 48J Oregon Report Card	0.5%	17.0%	3.0%	25.0%	8.0%	1.0%	46.0%	0.0%

2020-2021 Articulation Details by Discipline

PCC Subject Area Courses under Articulation	High School Course Title	Instructor	Duplicated Enrollment	Credits Earned
--	--------------------------	------------	--------------------------	-------------------

Tigard High School

Quarter 1 (PCC Fall Term)

Computer Science

CS 161	Computer Science I (4)	Computer Science	Adam Cornachione	7	28
--------	------------------------	------------------	------------------	---	----

History

HST 201	History of US to 1840 (4)	I.B. History of the Americas	Dave Unis	87	348
---------	---------------------------	------------------------------	-----------	----	-----

Quarter 2 (PCC Winter Term)

History

HST 202	History of the US 1840-1914 (4)	I.B. History of the Americas	Dave Unis	83	332
---------	---------------------------------	------------------------------	-----------	----	-----

HST 203	History of US 1914-present (4)	I.B. History of the Americas	Dave Unis	83	332
---------	--------------------------------	------------------------------	-----------	----	-----

Quarter 3 (PCC Spring Term)

Computer Science

CS 161	Computer Science I (4)	Computer Science	Adam Cornachione	5	20
--------	------------------------	------------------	------------------	---	----

History

HST 201	History of US to 1840 (4)	I.B. History of the Americas	Dave Unis	47	188
---------	---------------------------	------------------------------	-----------	----	-----

Quarter 4 (PCC Spring Term)

History

HST 202	History of the US 1840-1914 (4)	I.B. History of the Americas	Dave Unis	44	176
---------	---------------------------------	------------------------------	-----------	----	-----

HST 203	History of US 1914-present (4)	I.B. History of the Americas	Dave Unis	44	176
---------	--------------------------------	------------------------------	-----------	----	-----

1st Semester (PCC Winter Term)

Art

ART 197	Artist's Skills/Practical Issues (3)	Art Seminar Sequence Series	Shelley Socolofsky	7	21
---------	--------------------------------------	-----------------------------	--------------------	---	----

Business Administration

BA 111	Intro to Accounting (3)	Accounting 3	Chris McIsaac	8	24
--------	-------------------------	--------------	---------------	---	----

Early Childhood Education

ECE 120 ♦	Intro to Early Childhood Ed & Fam Studies (3)	Child Development 1	Shasta Maclean	16	48
-----------	---	---------------------	----------------	----	----

ECE 121 ♦	Observation and Guidance (3)	Child Development 2	Shasta Maclean	7	21
-----------	------------------------------	---------------------	----------------	---	----

Japanese

JPN 103	Japanese (5)	Japanese 4th/5th year IB	Anita Bieker	10	50
---------	--------------	--------------------------	--------------	----	----

2020-2021 Articulation Details by Discipline

PCC Subject Area
Courses under Articulation

High School Course Title

Instructor

Duplicated
Enrollment

Credits
Earned

Tigard High School

1st Semester (PCC Winter Term)

Psychology

PSY 201A	Intro Psychology Part 1 (4)	IB Psychology I	Fred Holtz	45	180
PSY 202A	Intro Psychology Part 2 (4)	IB Psychology II	Fred Holtz	30	120

2nd Semester (PCC Spring Term)

Biology

BI 101	Biology (4)	IB Biology	Michael Weitzhandler	34	136
BI 102	Biology (4)	IB Bio Organisms	Kaleb Reese	21	84

Early Childhood Education

ECE 120	Intro to Early Childhood Ed & Fam Studies (3)	Child Development 1	Shasta Maclean	12	36
ECE 121	Observation and Guidance (3)	Child Development 2	Shasta Maclean	9	27

Psychology

PSY 201A	Introduction to Psychology Part 1 (4)	IB Psychology I	Fred Holtz	75	300
PSY 202A	Introduction to Psychology Part 2 (4)	IB Psychology II	Fred Holtz	27	108

Total: 701 2,755

Unduplicated Enrollment: 294

✧ PCC Biology Instructor of Record: Jan Just

✧ PCC Early Childhood Education Instructor of Record: Tammy Ulrich

Classes that could not be offered this year because of remote learning due to COVID 19

High School Instructor	PCC Course	PCC Credits
James MacDonald	AM 100	4
	AM 111	4

Source	Demographic							
	American Indian/ Alaska Native	Asian	Black/ African American	Hispanic/ Latino	Multi-Racial	Native Hawaiian/ Pacific Islander	White	Not reported
2020-21 PCC Dual Credit Admission Application	0.0%	13.0%	2.0%	4.4%	9.9%	0.3%	58.0%	12.3%
2019-20 Oregon Report Card (parent reported)	1.0%	6.0%	2.0%	23.0%	6.0%	2.0%	60.0%	0.0%
2019-20 Tigard-Tualatin SD 23J Oregon Report Card	0.5%	5.0%	2.0%	27.0%	8.0%	2.0%	56.0%	0.0%

2020-2021 Articulation Details by Discipline

PCC Subject Area Courses under Articulation	High School Course Title	Instructor	Duplicated Enrollment	Credits Earned
--	--------------------------	------------	--------------------------	-------------------

Tillamook High School

Trimester 1 (PCC Fall Term)

Multimedia

MM 230	Graphics for Multimedia (4)	Graphics for Multimedia	Wil Duncan	2	8
--------	-----------------------------	-------------------------	------------	---	---

Total: 2 8

Unduplicated Enrollment: 2

2020-2021 Articulation Details by Discipline

PCC Subject Area Courses under Articulation	High School Course Title	Instructor	Duplicated Enrollment	Credits Earned
--	--------------------------	------------	--------------------------	-------------------

Tualatin High School

Quarter 1 (PCC Fall Term)

Multimedia

MM 230	Graphics for Multimedia (4)	Digital Arts & Graphic Design 2	Brenna White	0	0
--------	-----------------------------	---------------------------------	--------------	---	---

Quarter 2 (PCC Winter Term)

Multimedia

MM 230	Graphics for Multimedia (4)	Digital Arts & Graphic Design 2	Brenna White	4	16
--------	-----------------------------	---------------------------------	--------------	---	----

1st Semester (PCC Winter Term)

Business Administration

BA 101	Intro to Business Administration (4)	Marketing II	Veronica Salisbury	15	60
BA 150	Intro to Entrepreneurship (4)	Adv. Business Procedures	Veronica Salisbury	38	152

Early Childhood Education

ECE 120	Intro to Early Childhood Education & Family Studies (3)	Child Development 1	Mackenzie McGee (Hampel)	22	66
ECE 121	Observation and Guidance (3)	Child Development 2	Mackenzie McGee (Hampel)	10	30

Education

ED 100	Intro to Education for Paraeducators (3)	ED 100	Mackenzie McGee (Hampel)	8	24
--------	--	--------	--------------------------	---	----

French

FR 102	First Year French (4)	French 3	Diane Leebrick	6	24
FR 103	French (4)	French 4	Diane Leebrick	6	24

Management & Supervisory Development

MSD 101	Principles of Management & Supervisory (3)	Adv. Business Procedures	Veronica Salisbury	33	99
MSD 121	Leadership Skill development (3)	Adv. Business Procedures	Veronica Salisbury	34	102

2nd Semester (PCC Spring Term)

Business Administration

BA 101	Intro to Business Administration (4)	Marketing II	Veronica Salisbury	13	52
BA 150	Intro to Entrepreneurship (4)	Adv. Business Procedures	Veronica Salisbury	20	80

Computer Information Systems

CIS 122	Intro to Programming logic (4)	Intro to CS in Python 2	Dusty Long	8	32
---------	--------------------------------	-------------------------	------------	---	----

Early Childhood Education

ECE 120	Intro to Early Childhood Education & Family Studies (3)	Child Development 1	Mackenzie McGee (Hampel)	21	63
ECE 121	Observation and Guidance (3)	Child Development 2	Mackenzie McGee (Hampel)	14	42

2020-2021 Articulation Details by Discipline

PCC Subject Area Courses under Articulation	High School Course Title	Instructor	Duplicated Enrollment	Credits Earned
--	--------------------------	------------	--------------------------	-------------------

Tualatin High School

2nd Semester (PCC Spring Term)

Education

ED 100	Intro to Education for Paraeducators (3)	ED 100	Mackenzie McGee (Hampel)	8	24
--------	--	--------	--------------------------	---	----

Management & Supervisory Development

MSD 101	Principles of Management & Supervisory (3)	Adv. Business Procedures	Veronica Salisbury	19	57
MSD 121	Leadership Skill development (3)	Adv. Business Procedures	Veronica Salisbury	19	57

Multimedia

MM 230	Graphics for Multimedia (4)	Digital Arts & Graphic Design 3,4	Brenna White	14	56
--------	-----------------------------	-----------------------------------	--------------	----	----

Total: 312 1,060

Unduplicated Enrollment: 162

Source	Demographic							
	American Indian/ Alaska Native	Asian	Black/ African American	Hispanic/ Latino	Multi-Racial	Native Hawaiian/ Pacific Islander	White	Not reported
2020-21 PCC Dual Credit Admission Application	0.0%	4.9%	0.6%	6.2%	6.8%	1.2%	64.8%	15.4%
2019-20 Tualatin High School Oregon Report Card	1.0%	6.0%	1.0%	25.0%	8.0%	2.0%	57.0%	0.0%
2019-20 Tigard-Tualatin SD 23J Oregon Report Card	0.5%	5.0%	2.0%	27.0%	8.0%	2.0%	56.0%	0.0%

2020-2021 Articulation Details by Discipline

PCC Subject Area Courses under Articulation	High School Course Title	Instructor	Duplicated Enrollment	Credits Earned
--	--------------------------	------------	--------------------------	-------------------

Valor Christian School International

Yearlong (PCC Spring Term)

Biology

BI 101	Biology (4)	Biology 101	Erik Neill	15	60
Total:				15	60
Unduplicated Enrollment: 15					

Source	Demographic							
	American Indian/ Alaska Native	Asian	Black/ African American	Hispanic/ Latino	Multi- Racial	Native Hawaiian/ Pacific Islander	White	Not reported
2020-21 PCC Dual Credit Admission Application	0.0%	13.3%	0.0%	0.0%	6.7%	0.0%	66.7%	13.3%

2020-2021 Articulation Details by Discipline

PCC Subject Area Courses under Articulation	High School Course Title	Instructor	Duplicated Enrollment	Credits Earned
--	--------------------------	------------	--------------------------	-------------------

Westview High School

Quarter 1 (PCC Fall Term)

Anthropology

ATH 103	Intro to Cultural Anthropology (4)	Intro to Cultural Anthropology	Annarose Pandey	22	88
---------	------------------------------------	--------------------------------	-----------------	----	----

Quarter 2 (PCC Winter Term)

Anthropology

ATH 103	Intro to Cultural Anthropology (4)	Intro to Cultural Anthropology	Annarose Pandey	14	56
---------	------------------------------------	--------------------------------	-----------------	----	----

Quarter 3 (PCC Spring Term)

Anthropology

ATH 103	Intro to Cultural Anthropology (4)	Intro to Cultural Anthropology	Annarose Pandey	44	176
---------	------------------------------------	--------------------------------	-----------------	----	-----

Quarter 4 (PCC Spring Term)

Anthropology

ATH 103	Intro to Cultural Anthropology (4)	Intro to Cultural Anthropology	Annarose Pandey	26	104
---------	------------------------------------	--------------------------------	-----------------	----	-----

1st Semester (PCC Winter Term)

Multimedia

MM 260	Video Production I (4)	Film Seminar	Scott Guthrie	0	0
--------	------------------------	--------------	---------------	---	---

Political Science

PS 221	Globalization & International Relations (4)	Globalization & International Relations	Sergio Tanasescu	28	112
--------	---	---	------------------	----	-----

Writing

WR 121	English Composition (4)	Writing 121 for Seniors	Adam Oyster-Sands	36	144
WR 121	English Composition (4)	English Composition	Elizabeth Neely	15	60

2nd Semester (PCC Spring Term)

English

ENG 254	American Literature from 1865 (4)	Survey American Literature	Adam Oyster-Sands	13	52
ENG 254	American Literature from 1865 (4)	Survey American Literature	Elizabeth Neely	15	60

Multimedia

MM 260	Video Production I (4)	Film Seminar	Scott Guthrie	0	0
--------	------------------------	--------------	---------------	---	---

2020-2021 Articulation Details by Discipline

PCC Subject Area
Courses under Articulation

High School Course Title

Instructor

Duplicated
Enrollment

Credits
Earned

Westview High School

2nd Semester (PCC Spring Term)

Political Science

PS 221	Globalization & International Relations (4)	Globalization & International Relations	Sergio Tanasescu	39	156
--------	---	---	------------------	----	-----

Writing

WR 121	English Composition (4)	Writing 121 for Seniors	Adam Oyster-Sands	39	156
WR 121	English Composition (4)	English Composition	Elizabeth Neely	19	76

Total: 310 1,240

Unduplicated Enrollment: 250

Source	Demographic							
	American Indian/ Alaska Native	Asian	Black/ African American	Hispanic/ Latino	Multi-Racial	Native Hawaiian/ Pacific Islander	White	Not reported
2020-21 PCC Dual Credit Admission Application	0.0%	30.5%	2.8%	6.0%	6.0%	0.4%	32.9%	21.3%
2019-20 Westview High School Oregon Report Card	0.5%	26.0%	3.0%	21.0%	7.0%	1.0%	41.0%	0.0%
2019-20 Beaverton SD 48J Oregon Report Card	0.5%	17.0%	3.0%	25.0%	8.0%	1.0%	46.0%	0.0%

2020-2021 Articulation Details by Discipline

PCC Subject Area Courses under Articulation	High School Course Title	Instructor	Duplicated Enrollment	Credits Earned
--	--------------------------	------------	--------------------------	-------------------

Wilsonville High School

Q1/3 (PCC Spring Term)

Spanish

SPA 217	Spanish for Heritage Speakers 1st term (4)	Heritage Spanish	Christian Canales Vanegas	7	28
---------	---	------------------	------------------------------	---	----

Total: 7 28

Unduplicated Enrollment: 7

Note: Demographics not displayed when unduplicated headcount is 10 or fewer students.

2020-2021 Articulation Details by Discipline

Classes that could not be offered this year because of remote learning due to **COVID-19**

High School	High School Instructor	PCC Course	PCC Credits
BSD Options Program at Aloha High School	Louise Drow	AM 100	4
		AM 111	4
		AM 151	4
		AM 161	4
Canby High School	Darren Monen	BCT 100	3
		BCT 102	3
		BCT 106	3
		BCT 121	3
	Jeffrey Hart	CADD 126	3
Gaston High School	Wade Sims	BCT 106	3
		BCT 216	2
		BCT 217	2
		BCT 218	2
		ENGR 100	1
Helensview High School	Brian Granse	MUC 170A	1
		MUC 170B	1
		MUC 170C	1
Merlo Station High School	Alison Mecklem	MTH 95	4
	Andrea Niemiec	CG 114	1
		MTH 95	4
	Bob Wood	CG 145	2
	Eric Passes	CG 130	2
	Karey Glessing	CG 100	3
	Kelly Logan	CG 130	2
		CG 140C	1
North Salem High School	Andy Chidwick	BCT 106	3
		BCT 216	2
		BCT 217	2
		BCT 218	2
Roseburg High School	Lisa Danville	BCT 106	3
		BCT 216	2
Scappoose High School	Gregg Kilbourne	WLD 111	4
Terra Nova Science & Sustainability	Justin Strom	BI 101	4

Demographic Sources:

- 2020-21 PCC Admission Application: *Student-reported* (Dual Credit admission application)
- 2019-20 Oregon Report Card: *Family-reported* ([ODE Report Card](#))