

BORA

Portland Community College

PMWTC Project

OAC Meeting

November 23, 2020

AGENDA

Agenda

00:05

Community Outreach

Living Cully Focus Groups

00:40

Break

00:05

Design Update: Pods

00:45

Project Updates

00:20

Next Steps

00:05

00:40

Community Outreach

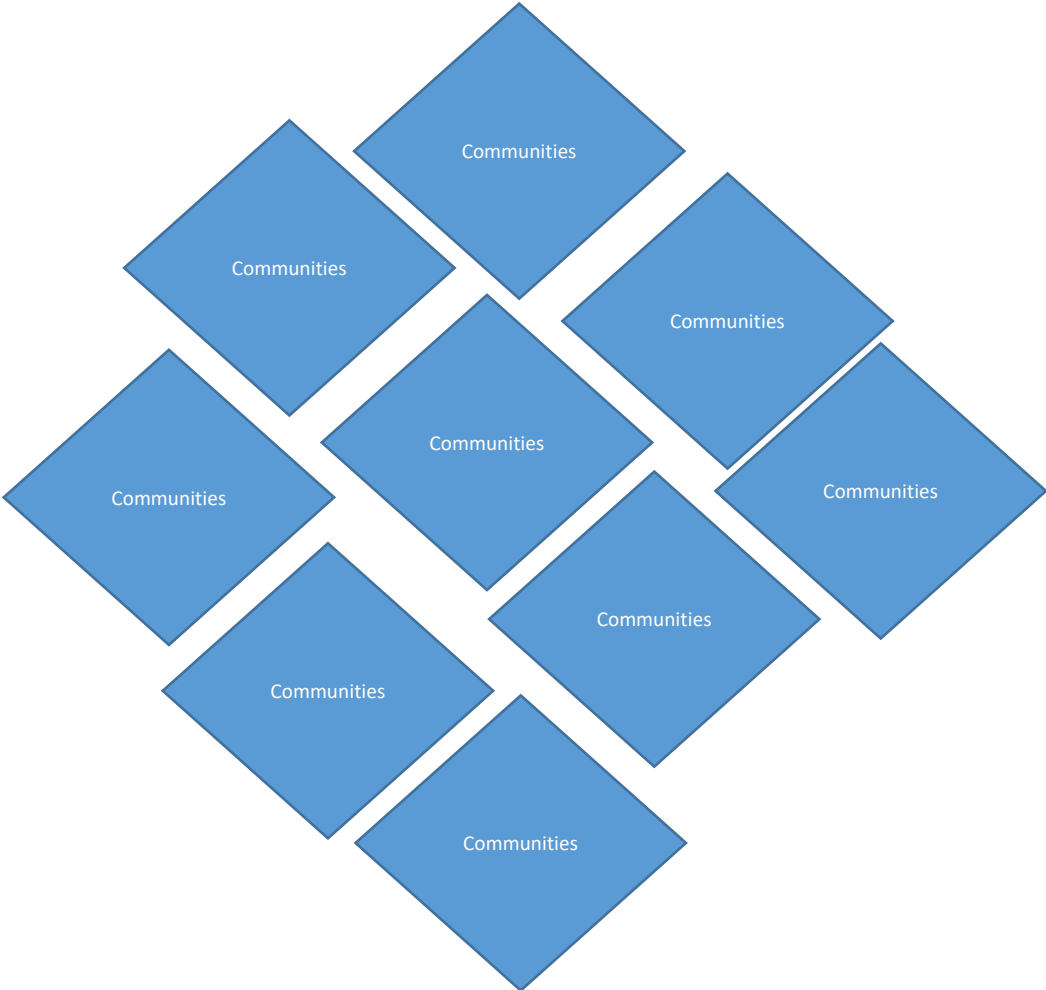
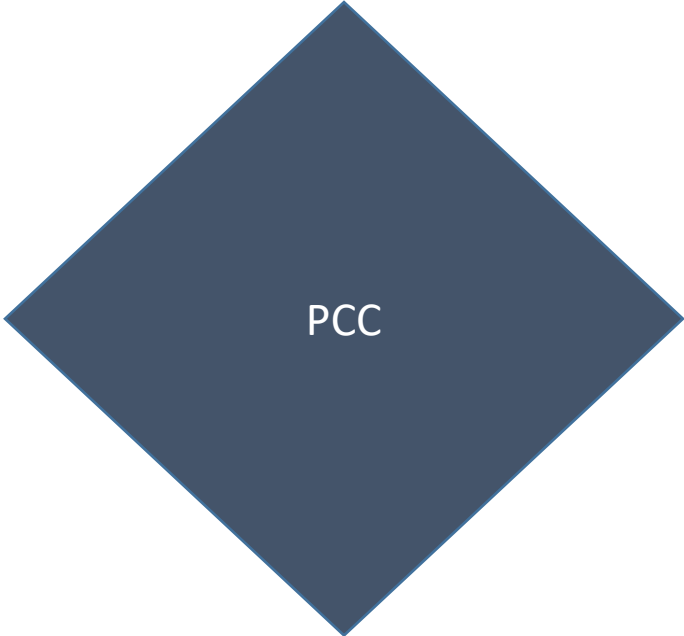


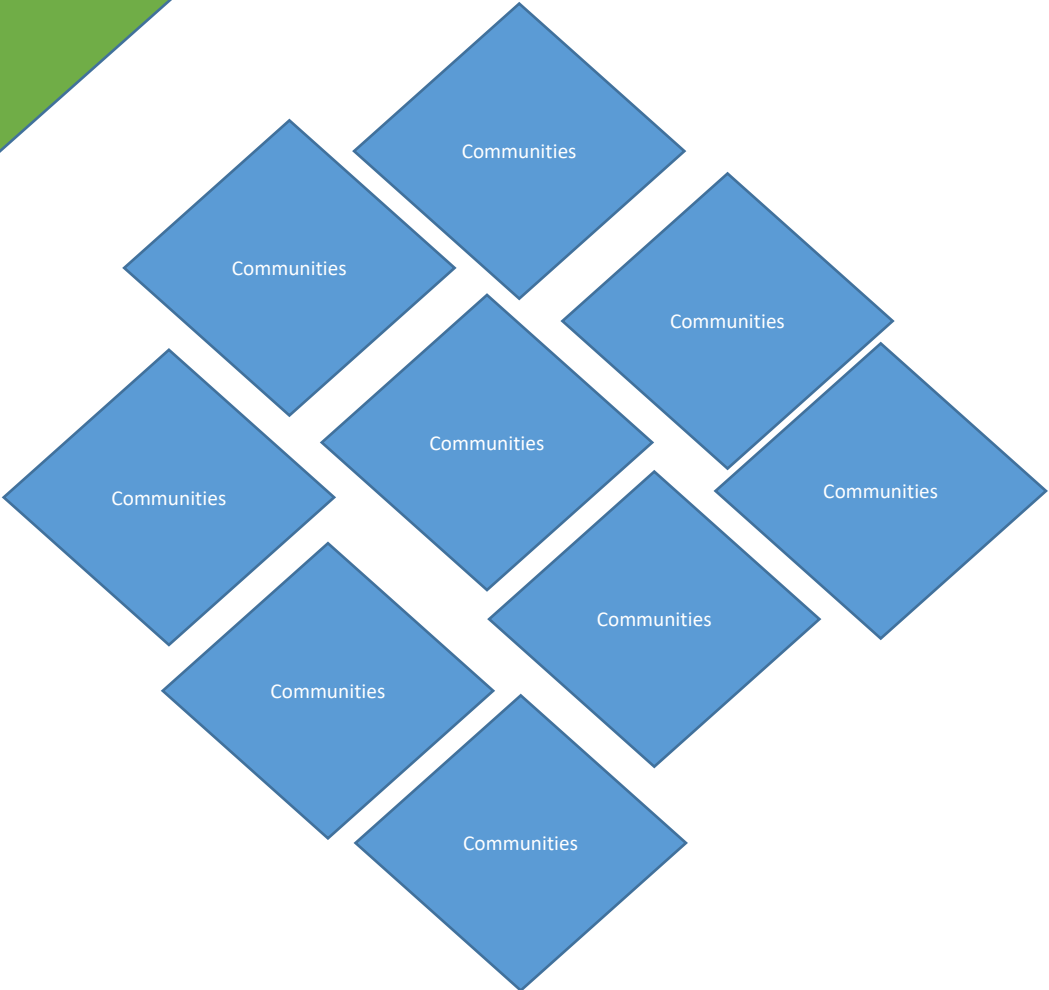
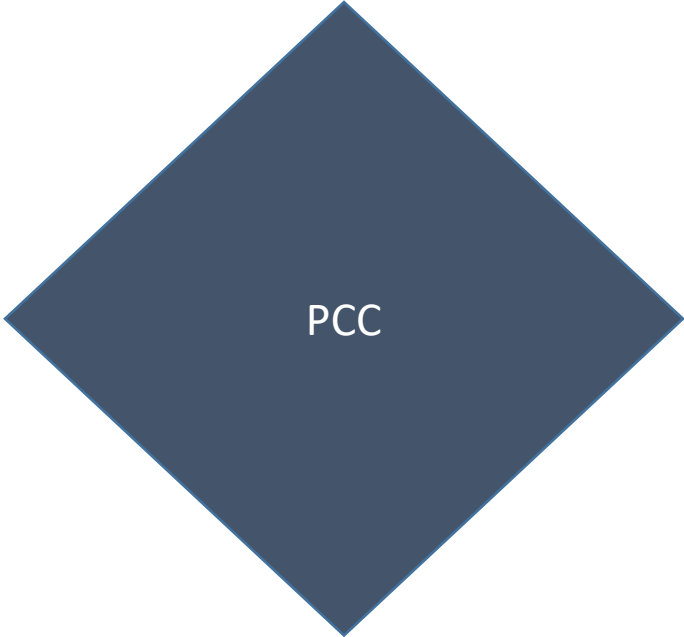
**Portland
Community
College**

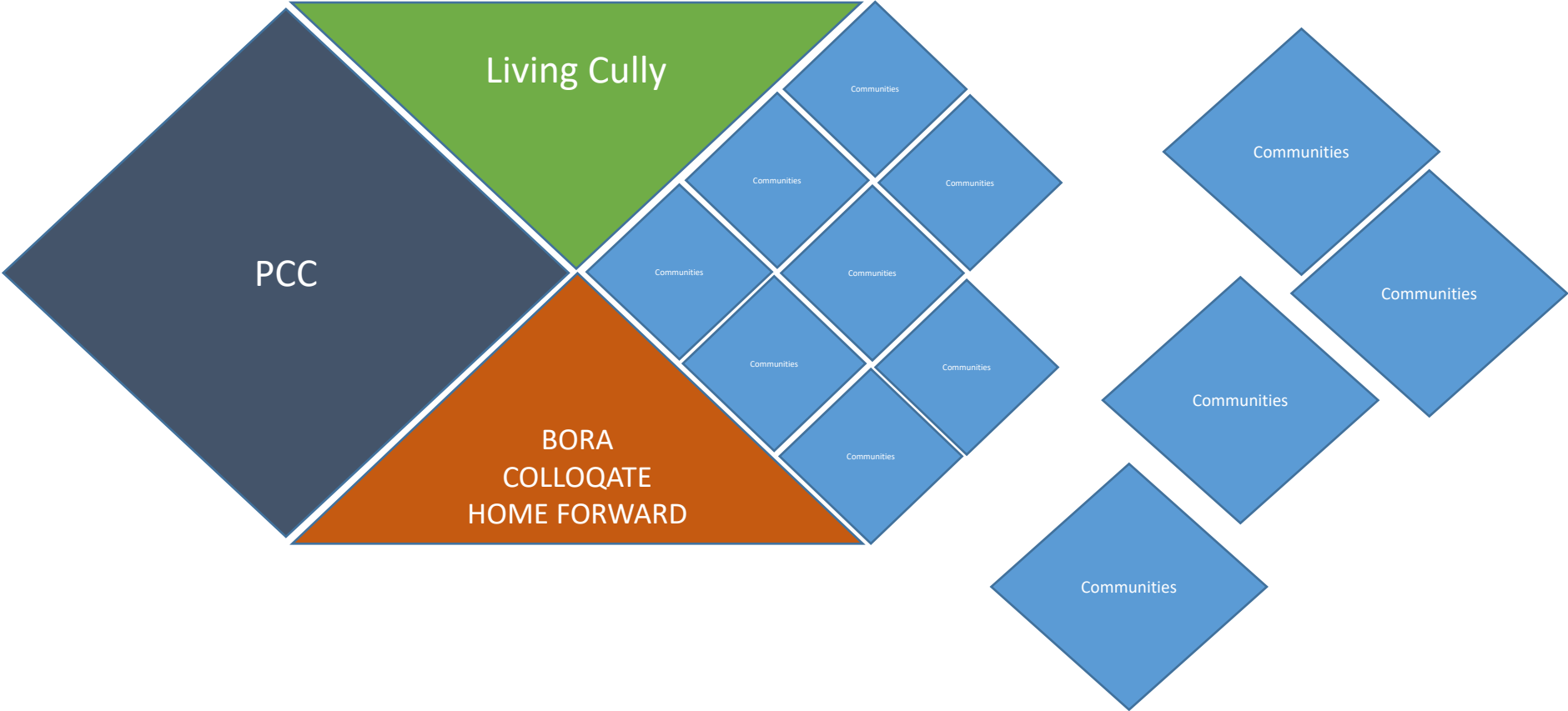


**ENGAGE
REVIEW
CONTRIBUTE**

Fall 2020 Community Virtual Focus Groups







7 virtual community focus groups +1

2 languages

English

Spanish

53 community members

4 agencies

Living Cully

Habitat for Humanity

Hacienda CDC

NAYA

9 constituent groups

African American community members

Affordable housing homeowners

Latinx community members

Manufactured housing residents

Native youth

Native elders

Small-business owners & workers

Somali youth

Community-based organizations staff & volunteers

+ Portland Disability Justice Collective members

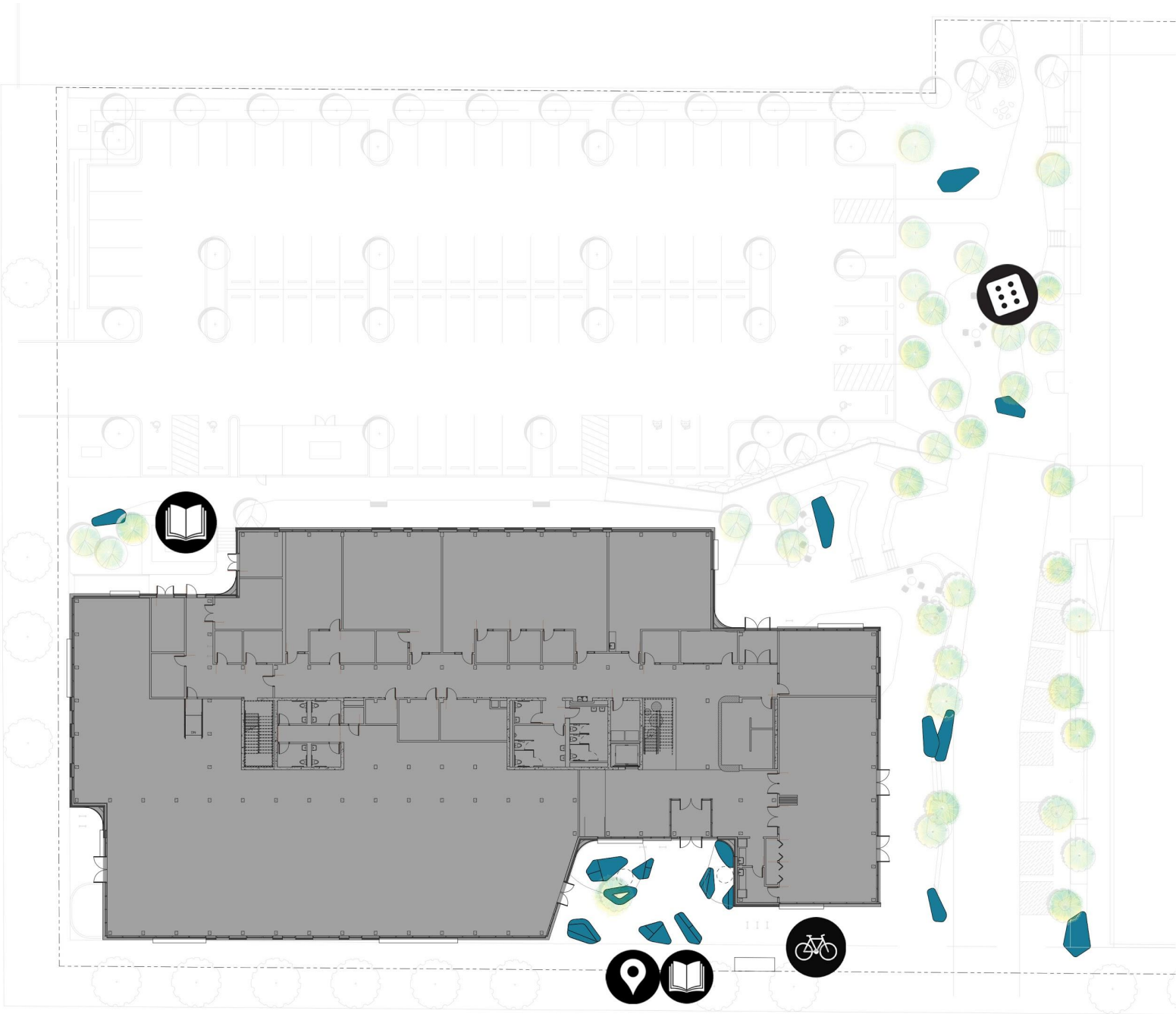
00:05

Break

00:45

Design Update

SUMMARY FEEDBACK



10/23/2020 SITE PLAN



10/23/2020 VIEWS

COMMENTS FROM OAC 10/23

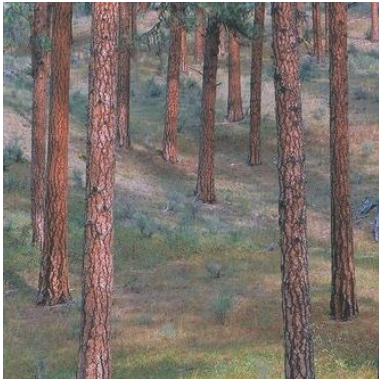
1. Clarity: Reduce density of South Scoop pods to ensure clear pathways of visibility and movement.
2. Cost: Consider construction assemblies that match the budget
3. Partnerships: Develop a path forward for effective partnerships
4. Invest in high-impact easy-to-maintain areas like in ground tree wells. Avoid landscaping in areas that are too high to reach without a ladder that need irrigation

**It is important to see
someone, something
that reaches your soul.**

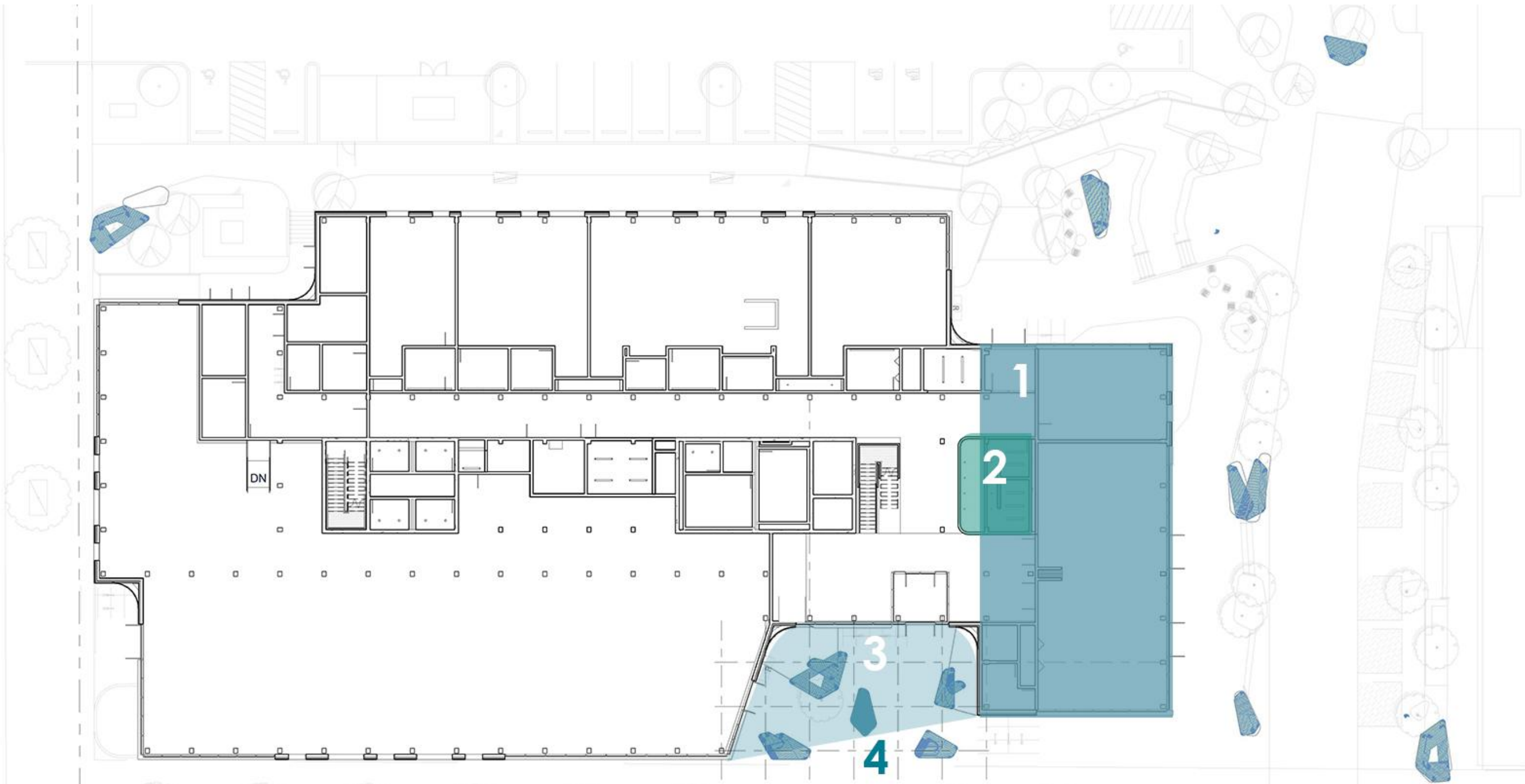
Sunshine
Living Cully focus group



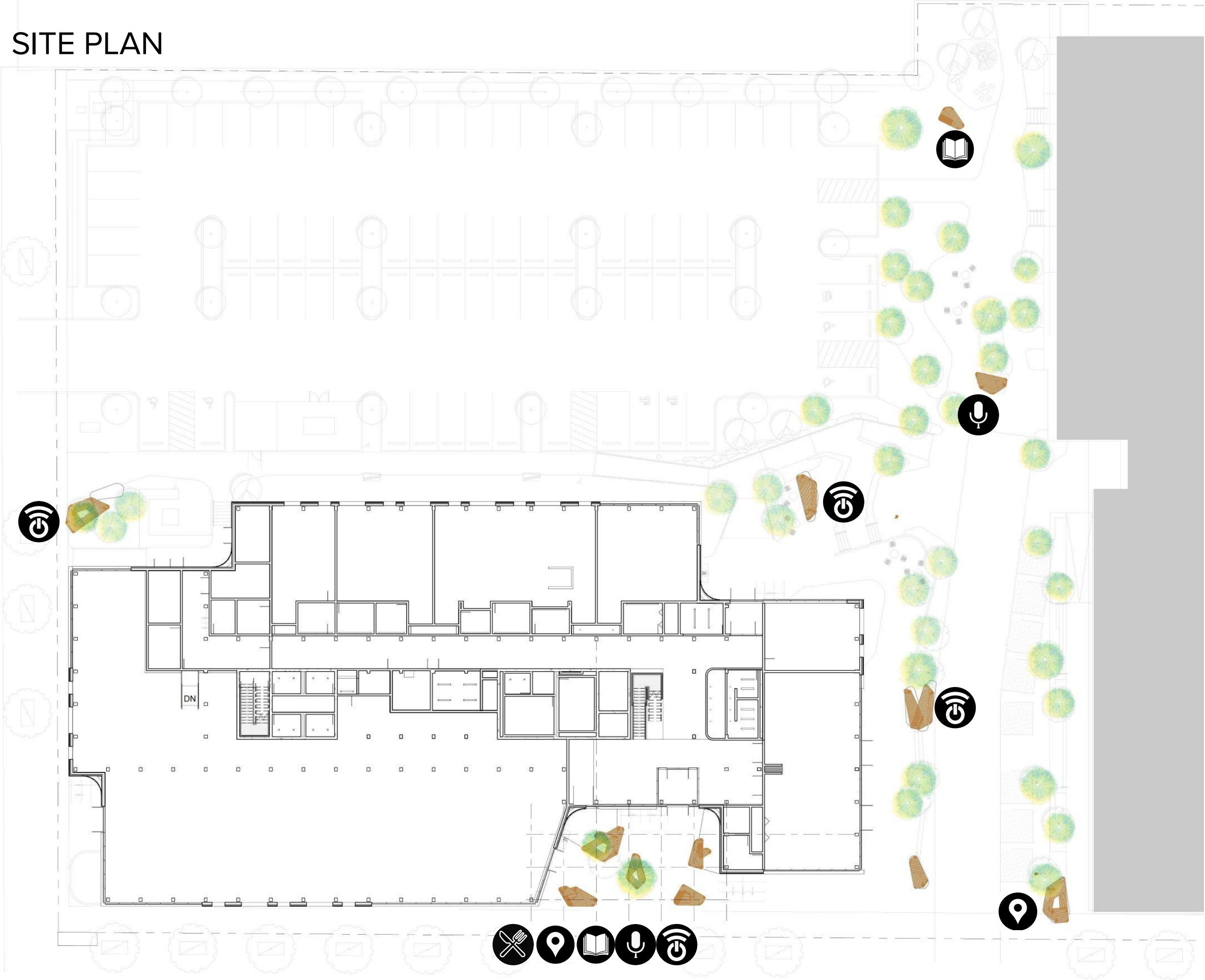
MOOD BOARD



DESIGN DIRECTION



SITE PLAN



LEGEND



COMMUNITY ART
SHOWCASE/ SIGNAGE



COMMUNITY PANTRY



COMMUNITY LIBRARY



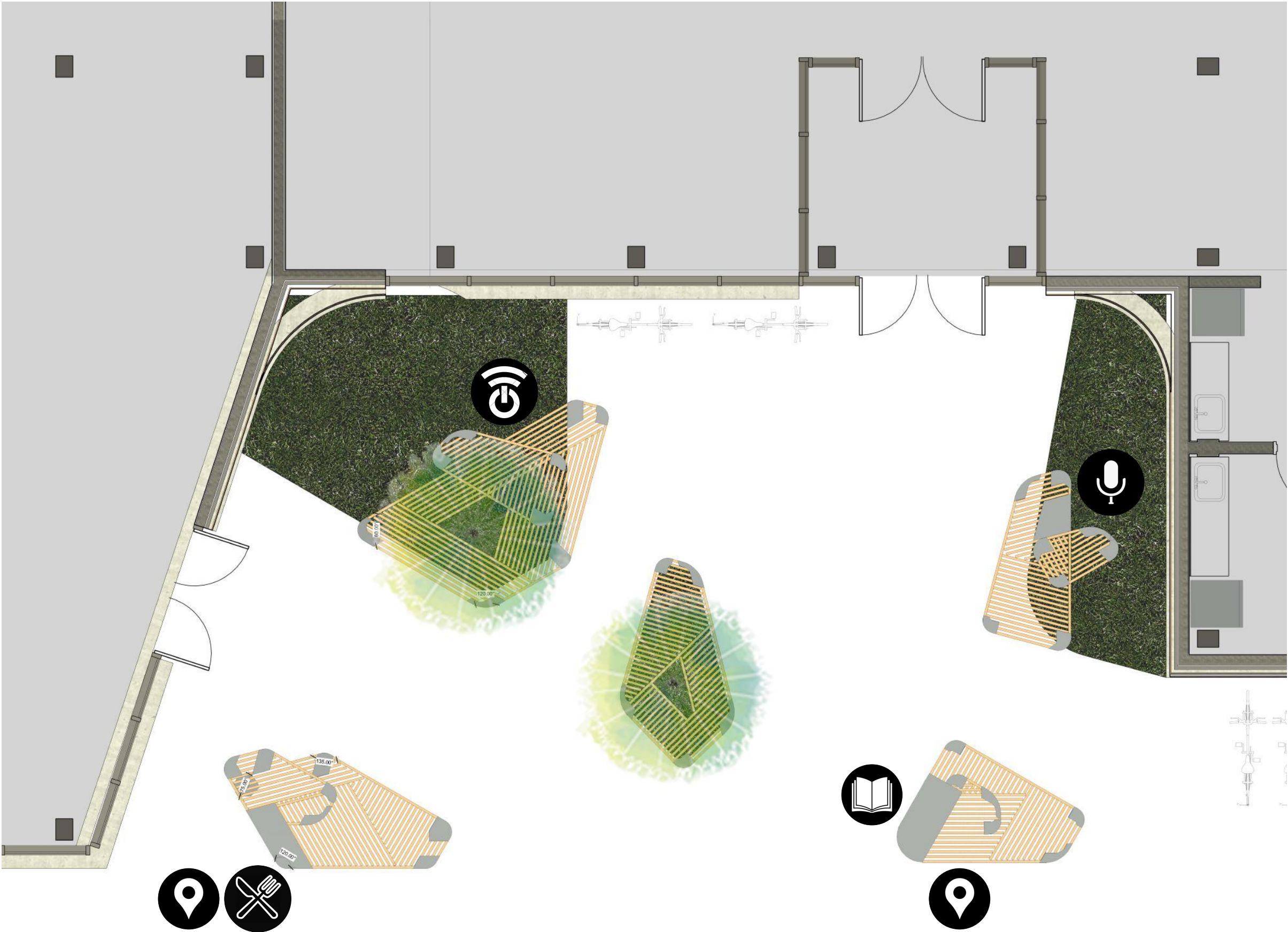
NARRATIVE/FIELD
RECORDING



POWER AND WIFI
CONNECTION POINT



ENTRY COURTYARD PLAN



LEGEND



COMMUNITY ART
SHOWCASE/ SIGNAGE



COMMUNITY PANTRY



COMMUNITY LIBRARY



NARRATIVE/FIELD
RECORDING



POWER AND WIFI
CONNECTION POINT



MATERIALS



ACCOYA

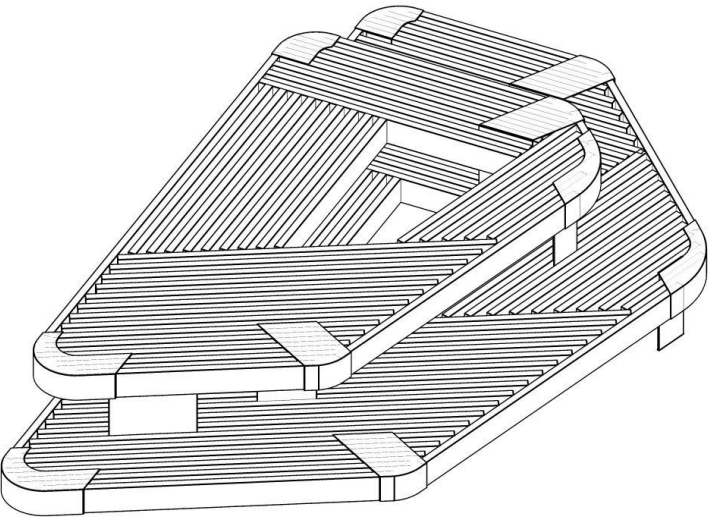
- Real wood
- 25 year warranty
- 50 year if 8" min above grade
- Greys over time
- Coated and stained finish options
- Low maintenance
- \$15/bf +/- (materials only)
- FSC certified
- Non-toxic

STEEL

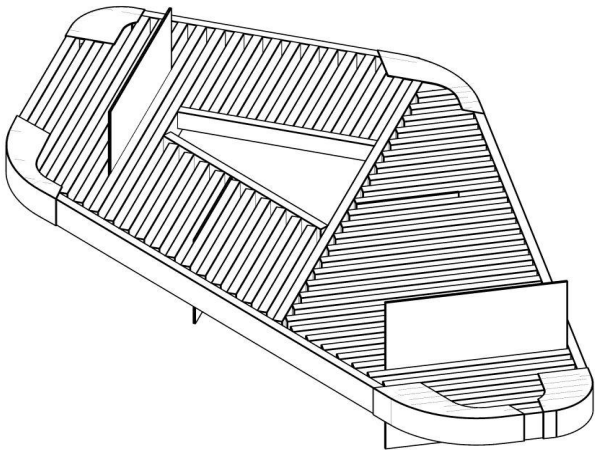
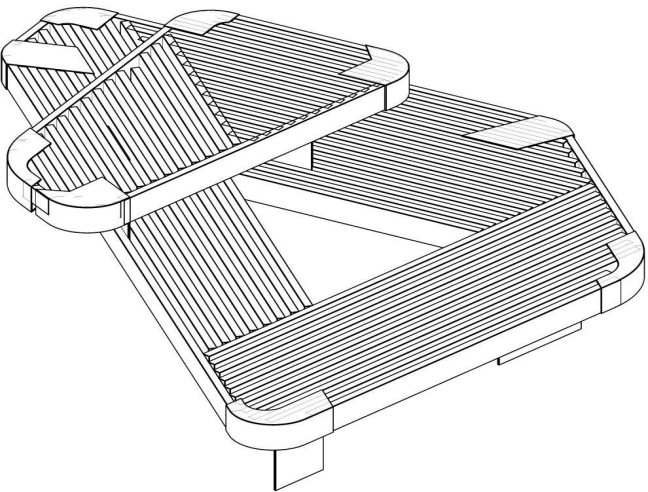
- Sealed weathering steel
- Pre-finished for color accents



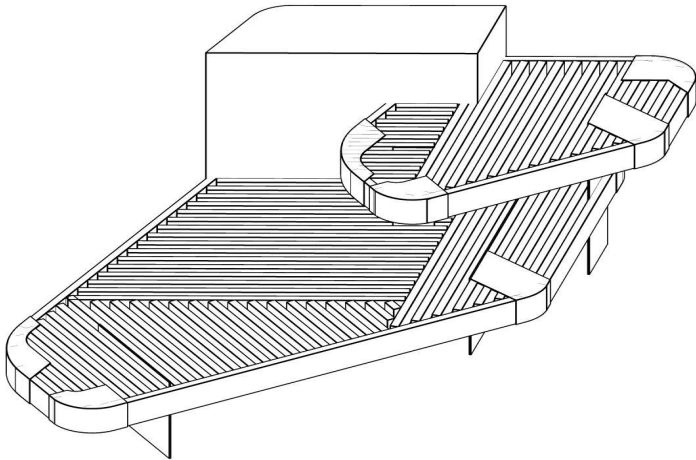
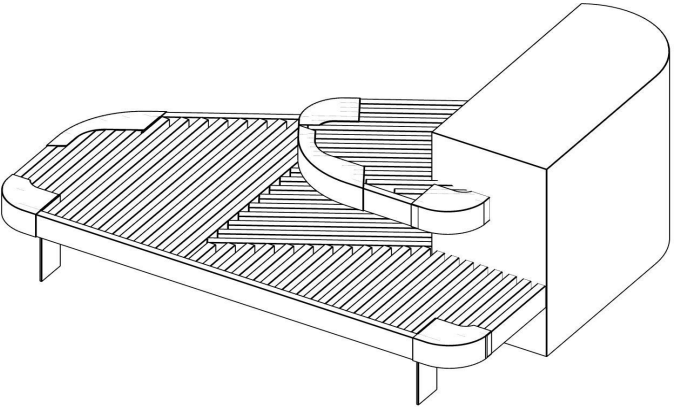
KILLINGSWORTH ENTRY VIEW



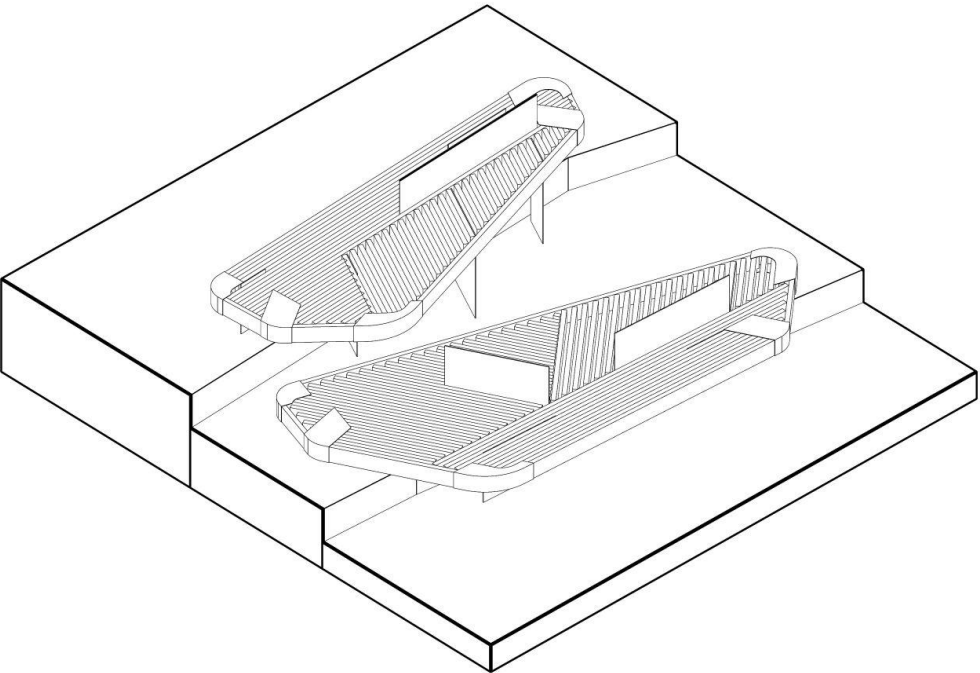
GATHERING SPACE VIEW



PARTNER SPACE CORNER



PORCH



**Fine, it's a nicer building, but
what does it do for the community?**

Bickey
DHS student focus group



AMENITIES LIST



ART AND SIGNAGE



A showcase for artists who have a connection to the neighborhood. Art can be applied or anchored on architectural elements in the civic space and can also serve as wayfinding for visitors.



FOOD JUSTICE/QoL



Resources to support community members and PCC affiliates to access food and basic necessities



LIBRARY



Books and media for community knowledge exchange



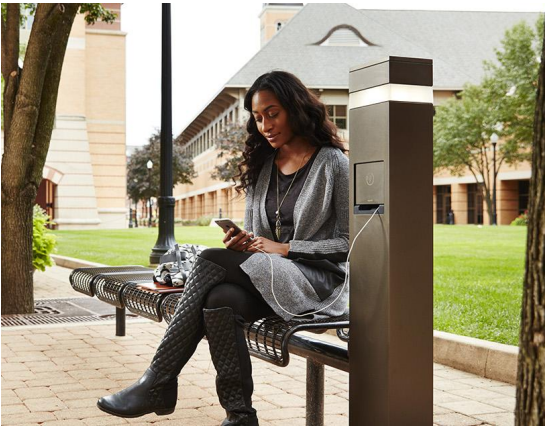
SOUND ART



Listening stations for places of acoustic respite. Recordings can include community members reading poetry, interviews about neighborhood history, field recordings of natural landscapes, work by PCC Music & Sonic Arts Program, etc



CONNECTIVITY



Hubs for connecting to WiFi. Hubs for connecting to power for charging devices and for events

AMENITIES PARTNERSHIPS POTENTIALS



ART AND SIGNAGE



Portland Street Art Alliance

PSAA offers a range of professional and educational services, including mural painting, community art project management, mural restoration and repairs, event signage, live event paintings, auto painting, graphic design, wild pasting, stencil marketing, 3D sidewalk chalk art, tours, and more.



Sunshine Dixon

As a local artist I have found a niche in the community for new and emerging artists. There once was mainly a draw for well established artists in the Portland area; now a door has been opened for new and emerging artists. Avenue for New Artists (by Sunshine Dixon) wants to partner with you to make the city a canvass for new and emerging artists and see their dreams realized.



Regional Arts & Culture Council

The Regional Arts & Culture Council (RACC) is a 501(c)(3) nonprofit organization that provides grants for artists and nonprofit organizations in Clackamas, Multnomah and Washington Counties; manages an internationally acclaimed public art program; convenes forums, networking events and other community gatherings; and provides workshops and other forms of technical assistance. RACC advocates for equity, inclusion and access, working to build a community in which everyone can participate in culture, creativity and the arts. RACC receives funding for our work from a variety of public and private partners to effectively serve artists, arts organizations, schools and residents throughout greater Portland.



NAYA Cultural Arts

This cultural gathering is the cornerstone of NAYA's cultural arts programming. Culture Night is a time where families and community members can come together to share a meal, and then participate in any number of activities: beading, singing, crafting, intertribal drumming and dancing. Culture Nights also offer interesting workshops, often hands-on, where you can learn all kinds of Indigenous teachings. Because we understand that people in this urban community come with very different past experiences and familiarity with their cultures, this is a very welcoming, non-judgmental, informal gathering for everyone's—elder, adult, and youth alike—enrichment.



AMENITIES PARTNERSHIPS POTENTIALS



FOOD JUSTICE/QoL



Oregon Food Bank

We started off like most food banks did back in 1988. That's when Interagency Food Bank and Oregon Food Share merged to become Oregon Food Bank, and we distributed USDA Commodity Supplemental Food to over 200 hunger-relief agencies. Today, Oregon Food Bank collects food from farmers, manufacturers, wholesalers, retailers, individuals and government sources. We distribute that food through a Statewide Network of 21 Regional Food Banks and approximately 1,400 food assistance sites serving all of Oregon and Clark County, Washington. Oregon Food Bank collaborates with Metro Center neighbor St. Charles Church.



Panther Pantry

The Panther Pantry is a free resource to all PCC students (current student ID is needed). Our pantries are stocked with fresh food, canned food, meal vouchers, hygiene supplies and more. PCC's Pantry Pantries are partner agencies of the Oregon Food Bank. Looking for a pantry closer to your home or with other hours? Visit the [Oregon Food Bank](#). Also, [Self Enhancement, Inc.](#) has a list of local schools and organizations that are providing food in the community. Additional community resources for students have been collected on [this PCC webpage](#). Please check them out!



NAYA Food Pantry & Clothing Closet

NAYA's food pantry is supported in part by the Oregon Food Bank and the Portland Police Bureau's Sunshine Division, both of whom have been a partner in feeding hungry families in the Native American community for many years. The Sunshine Division has also provided food boxes for NAYA's annual Winter Gathering along with agency referral cards for families needing food and clothing assistance throughout the year.



PCC Learning Gardens

PCC maintains multiple learning gardens that could be useful for stocking a fridge or pantry. Sometimes harvest season brings more than the folks maintaining the garden can use themselves, and that surplus could be used to stock a community fridge or pantry. Perhaps when planting, the garden could take into account consistently creating a food excess that would allow for such distribution.



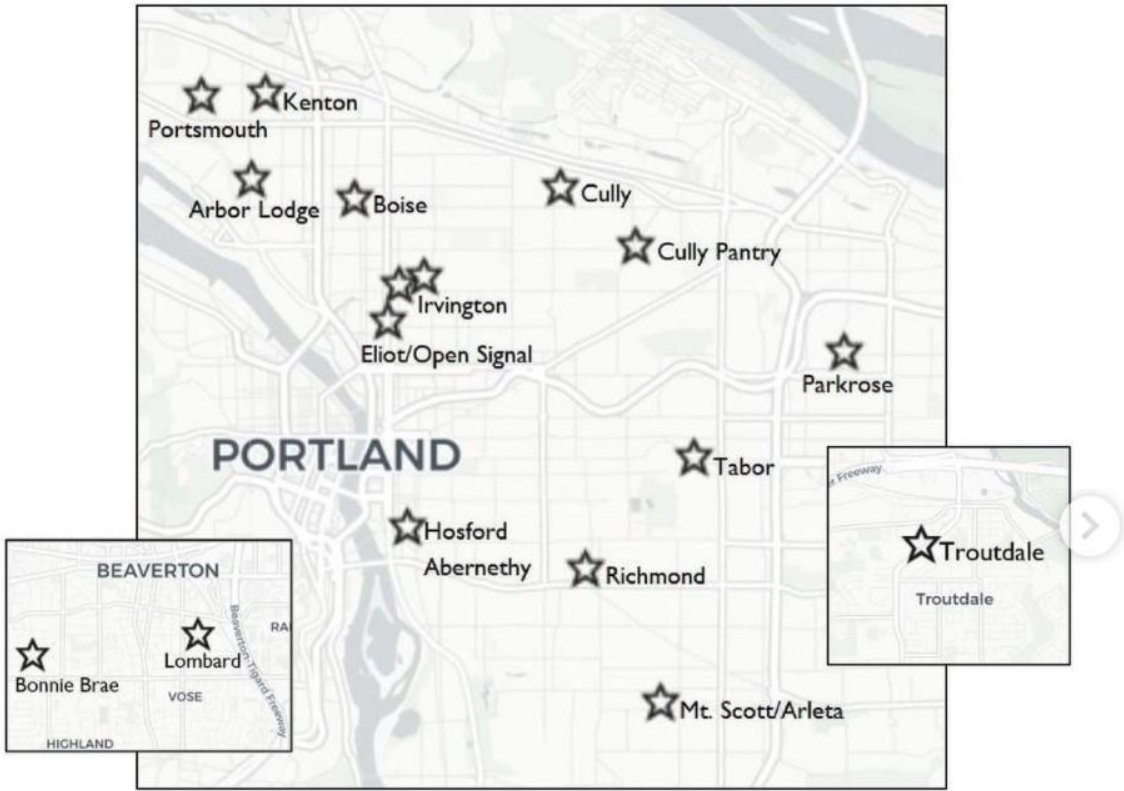
AMENITIES PARTNERSHIPS POTENTIALS



FOOD JUSTICE/QoL

PDX FREE FRIDGE

Free food in fridges and pantries across Portland, OR
TAKE WHAT YOU NEED, LEAVE WHAT YOU DON'T, GIVE WHAT YOU CAN



Portland Free Fridge

Portland Free Fridge maintains a network of regularly stocked and cared-for fridges and food pantries throughout Portland, with the first fridge in Cully itself. Each fridge or pantry that is set up has a group of volunteers who take on maintaining the fridge and stocking it with free food.

DATE

AMENITIES PARTNERSHIPS POTENTIALS



PCC Library

PCC’s own library system is extensive and would likely make a good partnership. The library is also oriented to public accessibility, running a program that allows community patrons to access the library.



Multnomah County Library

The public library system has three branches that are roughly equidistant from the Opportunity Center site, the North Portland Library, the Hollywood Library, and the Gregory Heights Library. Reaching out to this robust public resource might offer helpful resources and experience.



Third Eye Books Accessories & Gifts

Third Eye Books Accessories & Gifts LLC was founded in 2019 in Portland Oregon by Michelle Lewis and Charles Hannah. Our vision is to be the number one supplier of African Centered books, accessories and gifts in the Portland Metro Area. We believe our products can be used as a tool to motivate, inspire, restore or enhance a person’s cultural pride and to bring forth happiness and healing into the hearts of our customers. Third Eye has recently had to close their physical location, but is still taking online orders

Literary Portland

A resource for the PDX literary community. Produced by Old Pal.

Literary Portland

Literary Portland is a resource for the Portland, OR literary community, providing information on upcoming literary events, local publishers, places, reading series, and other organizations. We strive to support the community through awareness and connection, helping writers, creators, and fans of literature find welcoming spaces for voices from all backgrounds and of all identities.



AMENITIES PARTNERSHIPS POTENTIALS



SOUND ART



PCC Music and Sonic Arts program

In a caring and supportive environment, with the help of contemporary and emerging technologies, students push the boundaries of music and sound, discovering what is artistically and technologically possible.

The Music & Sonic Arts program values, welcomes, and teaches the contributions of people of different identities and backgrounds, and encourages students to imagine the important, possible roles of music, sound, and technology in positive social change.



Trevino L. Brings Plenty

(Minneconjou Lakota) and Se-ah-dom Edmo (Shoshone-Bannock, Nez Perce, Yakama) share written works and life stories about people near a river.

Trevino L. Brings Plenty uses poetry, music and storytelling to capture the humor, sadness, and joy of contemporary Indian life.



Portland State
UNIVERSITY

Library

PSU Oral History Collection

Audio and/or transcripts of oral history interviews held by Portland State University Library Special Collections and University contain many different series of histories about Portland and the state of Oregon, including a collection focused on interviews with the African American activists in Portland who led or supported the work of the Black United Front.

Cully Neighborhood on The Map Oral History Project



NE Prescott & Cully, 1968 and 2014

Cully Neighborhood on the Map

This neighborhood, this place we call home, was once defined by what it wasn't. It wasn't "Portland" for the first 150 years that the city of Portland existed. It was Multnomah County; Portland grew around it and absorbed it in 1985. Cully's history is therefore recorded less in books and ledgers than in the memories of its long time residents. Up to 80 years of our past can be reclaimed by talking to neighbors. This project, Cully Oral History on the Map, marries the audio of oral interviews with maps and pictures to record the people, places, and events that formed our neighborhood.



AMENITIES PARTNERSHIPS POTENTIALS



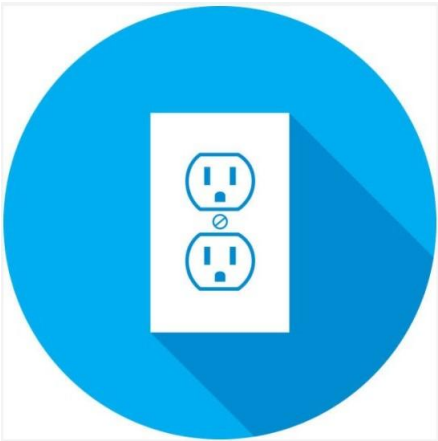
PersonalTelco Project

The Personal Telco Project is dedicated to the idea that users have a central role in how their communications networks are operated. We do that by building our own networks that we share with our communities, and by helping to educate others in how they can too. To date, we have done this using Wi-Fi technology. We began in 2000 by turning our own houses and apartments into wireless hotspots (or "nodes"), and then set about building networks in public locations such as parks and coffee shops. There are currently about 100 active nodes participating in our project. We would like to see people and businesses in every corner and on every block of the city participating.



PCC Internet Service Partnerships

During this public health crisis, local internet service providers are offering free wifi hotspots and low-cost internet solutions. As PCC moves more of its courses online during this health crisis, we want to provide students a resource to access free and low-cost internet options.



Public Charging

We couldn't find any organizations that worked specifically on providing public outdoor power access. There are plenty of products that can provide outdoor access, and we think this access is a strong component of an Opportunity Center that is public-facing and responsive. The cost of recharging a cell phone is less than a cent, and having outlets for community events and markets would make planning and setup very easy.

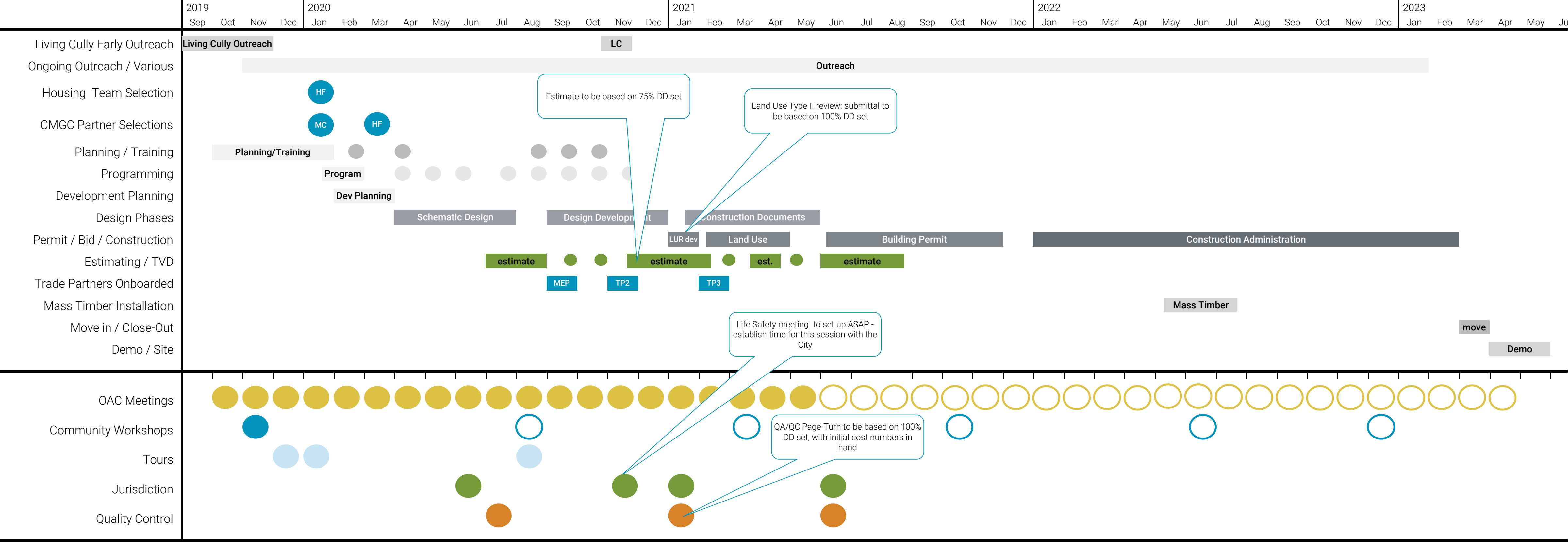
00:20

Project Updates
Schedule
Next Steps

SCHEDULE

BORA

PCC Metro Center | Overall Project Schedule
Tuesday, October 20, 2020



SCHEDULE

Design Development Estimating and QA/QC review process

75% DD set issued November 25 - basis of cost estimate

100% DD set issued on January 15

DD Cost Estimate Reconciliation due January 17

DD Pathway to Budget

100% DD Page Turn Review

PROJECT UPDATES

Ongoing:

Trade Partners update

Facade / Interior Framing Trade Partners based on 50%DD Set

Mass timber

Functional Teams update

Target Value Design

Values updated in Smartsheet to reflect Trade Partner pricing

Will be adjusted after DD estimate and reconciliation is complete

MEETINGS

CAN Land Use Meeting: 100% DD set will be the basis of PCC's Land Use application

Interior Materials Meeting

Mid December: Follow up meeting to finalize carpet and paint selections

01/15: 100DD Set

OAC Review of material and finishes

Review material and finishes with Metro Staff

Format for OAC Meetings in CD

Meetings to be scheduled:

Trimet on bus stop locations

DD Site Accessibility Universal Design

Mass Timber Site Visit to OSU and Workshop 3

Site Logistics / Site Development with O'Neill Walsh and Andersen

THANK YOU

Date
11.23.2020

By
Becca Cavell

Subject
OAC Meeting
Design Development Meeting 9

Project Name
PCC Opportunity Center

Project Number
19016

Present

Rebecca Ocken
Dusty Hoerz
Linda Degman
Gina Valencia
Jody Giffin
Pam Hester
Jeff Slinger
Trudy Jacobs

Bryan Lee
Elizabeth Chen
John Ludlam
Amy Donohue
Jeanie Lai
Becca Cavell
Isaac Adams
Sarah Oeftering

Charlie Brucker
Caitlin Ranson

Distribution
Those invited / present

Bora File

Minutes

1. INTRODUCTIONS

2. COMMUNITY OUTREACH

A. Living Cully Focus Groups

1. Gina reported: PCC wanted greater connection with the community – there are many communities; COVID has made connection harder
2. Opted to work with Living Cully again to make connections, with PCC, Colloqate and Home Forward also working hard to plan the efforts
3. This effort was successful but some communities remain unreached- some folks have challenges such as a lack of internet connection or lack of access to an electronic device.
4. PCC has learned a lot; Bora has been very flexible, learning how to support Zoom with interpretation functions and effective breakout groups
5. Some folks attended break outs with land line connection only – PCC mailed physical documents. The presenters worked hard to be more descriptive and use page numbers

B. Gina shared statistics:

1. 7 virtual community focus groups +1
2. 2 languages

BORA

- a. English
 - b. Spanish
3. 53 community members
4. 4 agencies
 - a. Living Cully
 - b. Habitat for Humanity
 - c. Hacienda CDC
 - d. NAYA
5. 9 constituent groups
 - a. African American community members
 - b. Affordable housing homeowners
 - c. Latinx community members
 - d. Manufactured housing residents
 - e. Native youth
 - f. Native elders
 - g. Small-business owners & workers
 - h. Somali youth
 - i. Community-based organizations staff & volunteers
6. Living Cully has requested adding a group to discuss accessibility – Living Cully will work with the Portland Disability Justice Collective members to help recruit folks to this
- C. Miro Board review / discussion
 1. Jeanie shared a link to a Miro board https://miro.com/app/board/o9J_kqUdAOw= and invited participants to join and add commentary about what was heard and learned in the sessions
 2. Rebecca: PCC is well received in the community – and the community wants to be a part of the community.
 - a. How can PCC complement and support the community?
 - b. Through arts and culture?
 - c. A craft fair?
 - d. Want it to be safe and welcoming
 - e. First session raised the topic of hostile architecture
 - f. “Affordable” – how can the housing be made more affordable?
 3. Dusty:
 - a. New to the project and learned a lot about diversity of community
 4. Elizabeth:
 - a. Community needs resources for food and basic essentials
 - b. COVID is having a huge impact on the community
 5. John:
 - a. Folks are aware that public space is being added to its community and is very interested in how the large outdoor space can be an amenity through games courts, etc
 6. Jeanie:
 - a. Arts: some ideas about murals that could elevate and showcase diversity in the community and/or the history of the community – how can that be celebrated
 - b. Expressed desire for a gallery space, even in hallways, that could be a rotating exhibit opportunity
 - c. A desire for places to play – basketball, etc. Can this project provide a net on site?
 - d. Signage: multi-lingual / graphics as well as words
 - e. Tutoring clubs: HF

- f. Hostile architecture: Bora to reconsider site details [skateboarding versus occupying seats]
 - Concerned about conflict between skate boarders and younger children as well as older staff and visitors
 - g. Garden opportunities
 - Pam has concerns about garden beds that become fallow if partnerships fall through over the years
 - HF project: courtyards are too shady / HF could help support the program
 - h. Lighting to ensure safety
 - 7. Linda:
 - a. PCC site is constrained. 1 acre has already been given to HF. There is concern about lack of parking on the site.
 - b. Good to hear the concerns / desire of community member
 - c. Shares Pam's concerns about maintenance of community gardens / learning gardens
 - d. PPS owns adjacent property – seems like a much better opportunity to provide basketball amenities
 - e. PCC's first goal has to be to support visitors to the building
 - f. Likes idea of rotating art within the building or on the site
 - g. Operational issues / maintenance concerns
 - 8. Elizabeth – food justice and a desire for greenery were the two most compelling needs that she heard
 - 9. Rebecca – Home Forward's service programs will come to the site and can serve the broader community
 - 10. Bryan – folks don't want superficial gestures.
 - 11. Linda: should PCC have a broader conversation with the Oregon Food Bank? Food insecurity is pervasive among PCC students
 - 12. Rebecca: how can PCC be a resource to help support this – a convener through its space rather than a provider. The community room can be a venue to provide access.
 - 13. Elizabeth: there are lots of different scales of need, and thresholds for access.
 - 14. Gina: some folks – residents - are fearful and have experienced violence – vandalism, sometimes gunshots; folks want to be able to read the space and feel safe. Pam acknowledged that staff have also experienced trauma related to local violence
 - 15. Amy and Jeanie: having walk-up housing and the housing entry in the middle of the site, this will help create a sense of safety and security
 - a. Lighting and landscape to be carefully designed
 - b. Catenary lighting in the courtyard could provide a lot of lighting
 - c. Jeanie: important that the site feels safe and inviting
 - D. Oregon Food Bank
 - 1. Pam has contacts at the OFB and Linda agrees that it would be good for Pam to make connections with the appropriate people to begin a conversation
 - E. Next steps:
 - 1. Miro Board will be kept open
 - 2. Notes have been issued from all the meetings
 - 3. Colloqate will be updating its design implications document and will update the Design Justice document – will be ready for the 100% DD set with a cartoon ready for 75% DD.

3. DESIGN UPDATE: PODS

 - A. What Colloqate heard at the last OAC:
 - 1. Reduce pod density

BORA

2. Consider construction assemblies
3. Develop a path forward for partnerships to make amenities affordable and effective
4. Consider maintenance and cost effectiveness
- B. Focus Groups – what Colloqate heard
 1. “it’s important to see someone, something that reaches your soul”
 2. “Fine, it’s a nicer building, but what does it do for the community?”
 3. How connected and key Tracee is to this project and community
- C. Mood Board
 1. Start to draw on the historic farms and land use from the history of this neighborhood
 2. Calmness and organic nature of native forest and waterways
 3. Cully history of activism and community organizing
 4. Analogy to stones in a stream
- D. Site Plan
 1. Elizabeth showed an updated site plan and detailed plans showing pod types and organization.
 2. Access and egress to PCC and partners paces have been carefully considered
- E. Materials
 1. Akoya for seating surfaces
 2. Colors from interior palette
- F. Elizabeth showed updated renderings of the various pods
 1. Tiers of slatted seating
 2. Could contain storage amenities, such as food or books, and/or art locations
- G. John shared a list of possible amenities and possible related partnerships
 1. Art and signage partnerships
 - a. Portland street art alliance
 - b. Sunshine Dixon [participant]
 - c. RACC
 - d. NAYA cultural arts
 2. Food justice partnerships
 - a. Oregon Food Bank
 - b. PCC learning gardens
 - c. NAYA food pantry and clothing closet
 - d. Panther Pantry
 - e. PDX Food Fridge project
 3. Library partnerships
 - a. PCC Library
 - b. Multnomah County Library
 - c. Third Eye Books Accessories and Gifts [Black-owned]
 - d. Literary Portland
 4. Sound art partnerships
 - a. PCC Music and sonic arts programs
 - b. Trevino L Brings Plenty
 - c. PSU Oral History Collection
 - d. Cully Neighborhood on the Map
 5. Connectivity partnerships
 - a. PCC Internet Service Partnerships
 - b. Public Charging
 - c. Personal Telco Project
- H. Feedback
 1. Bryan – team is working with Andersen and Bora re: pricing
 2. Rebecca – asked for clarity re: landscape beds in entry court

- a. Two trees in entry court, each associate with a seating area
 - b. PLACE will propose a low evergreen for a uniform planted area – will need to be hardy; perhaps fragrant. Will be a hot space
 - c. PLACE: trees will be two different species; northern tree will grow faster with larger planted area
 - d. PLACE: each bike rack could support two bikes if placed appropriately
3. Rebecca: still struggling with this approach. Understands “eddy” concept but hoped to see more planning
 - a. Suggests moving bikes to the west, and providing more landscaping at the entry area that can be enjoyed by folks waiting in the PCC lobby area
 - b. Dusty: concerned that folks might ride their bikes INTO the plaza – Charlie concurs
4. Gina: likes the refinement of the pods; worries that they are only for the able-bodied. Recalls that at the Mall at Sylvania campus, when there are large events there is a concerted effort to NOT place barriers / obstacles in the way of entry pathways as these maybe barriers to the visually impaired. Suggests bringing to the upcoming Focus Group. Appreciates partnership research. John Ludlam agreed that a discussion around surface treatment
5. Pam: loving how the pods are developing; likes warmth and color. Likes trees in the front area. Very intrigued about recordings, poetry, music, oral history – maybe tie this to the request for historical pictures of the neighborhood.
6. Pam: appreciates list of possible partners but concerned about maintenance
7. Washington County Library is interested in setting up a mobile kiosk for books at Willow Creek Opportunity Center
8. Linda: likes pods; wants to review accessibility – need a clear pathway to the front door. Likes trees in seating area for shade; will want to have a facilities review of proposed wood. [DD review will be perfect for this consideration – Accoya is very durable with a 50-year warranty for installation as shown]
9. Charlie: soils will be carefully selected for tree and groundcover health. Also, groundcover can be extended to encompass both trees
10. Rebecca: can audio component be located to the north, where it is quieter? Important that it is audible.
 - a. Pam – maybe they can be used differently based on where they are located; also, could change over time as part of the joy of discovery

4. PROJECT UPDATES

- A. Jeanie gave a very quick update:
 1. 75% DD set is to be issued on Wednesday – will be the basis of the Cost Estimate
 2. Page turn will be based on the 100% DD set
 3. Land Use meeting with Cully Association went well
 4. The HF Project is no longer pursuing a height adjustment and plans to reduce the first floor height; the team is still considering double height space at the street frontage

ZOOM CHAT RECORD

1. 13:13:26 From Jeanie Lai (she/her) : Link to: https://miro.com/app/board/o9J_kqUdAOw=
2. 13:25:25 From Bryan C. Lee Jr : audio is out folks. trying to fix it be right back
3. 13:32:03 From Amy Donohue (she/her) : Are there plans to include any garden space within the Home Forward courtyards?
4. 13:43:45 From Amy Donohue (she/her) : There is a Food "Co-op" at Faubion.
5. 13:47:57 From Elizabeth Chen (she/her) : I didn't express that effectively, but I meant to say that there are multiple ways to meet needs such as food justice: one person may react well to a

BORA

weekly food pantry, another person may respond well to gardens as a gateway to fresh foods, another person may need a 24 hour access, low barrier way to access food. etc.

6. 13:48:34 From Amy Donohue (she/her) : Good point, Elizabeth.
7. 13:52:01 From Jeanie Lai (she/her) : Definitely Elizabeth
8. 13:55:36 From Linda Degman : Thanks Elizabeth
9. 13:57:04 From Caitlin Ranson : We have exterior lighting at our stoops / units along the north end of the plaza. We will also be egressing out into the plaza so we will have required lighting there. The glassy lobby / lounge and bridge connecting the two buildings will be thoughtfully lit as well.
10. 14:00:35 From Jeanie Lai (she/her) : Thanks Caitlin. The glass bridge and glassy lobby will definitely be a beacon and help light the site.
11. 14:06:02 From Amy Donohue (she/her) : Virgin Gorda, BVI.
12. 14:58:01 From Pam Hester : I forgot to mention that I love providing power and wifi throughout if possible
13. 14:59:27 From Pam Hester : I have to hop off for another meeting. It's looking incredible. Thanks everyone!
14. 14:59:40 From Gina Valencia : Thank you everyone
- 15:01:39 From Amy Donohue (she/her) : I have a 3pm, so need to depart. Good to see you all. Thanks for th feedback.

END OF MEETING NOTES