

Bond Program

Building Our Future



Portland
Community
College



ANNUAL REPORT | July 2012 – June 2013

Southeast Center student photographer
Bernie Doran views stacks of metal
studs with a creative lens.



Dear Residents of the PCC District,

Stepping onto any one of our campuses, one sees signs of change in the physical landscape of our learning environment. This is a sure sign that we are on the road to success in implementing the improvements funded by the 2008 voter-approved college bond measure. These truly are exciting times. The bond affords us the opportunity to bring about dramatic changes in remodeling and upgrading existing college structures, building new student centers, classrooms, and providing the space needed for improvements in instructional technology. The changes in service delivery allow us to improve dramatically our approaches to helping students successfully navigate their new college environment.

On July 1, 2013 I was honored to take the helm of this thriving, successful, and ever-changing institution. I can't think of a more exciting place to be and at a most exciting time in its history. I look forward to working alongside all of you as construction fulfills the promise of great results in the months and years ahead.

Dr. Jeremy Brown, PCC President

The road to success is always under construction.

—LILY TOMLIN

PCC Bond Puts Dollars Back Into the Local Economy



PCC has used bond funds to purchase goods and services from the following vendors

*Minority, Women and Emerging-Small Business (MWESB) firms

- | | | | |
|---|--------------------------------------|--|---|
| 2C Building Services* | Applied Professional Services | Berault Entertainment Marketing | CJ Jackson*
Classique Floors |
| 3D Infusion* | Aramark | Bernoulli Graphics | Cochran, Inc. |
| A & L Western | ARC | Best Buy | Code Unlimited* |
| AAA Heating and Cooling | Architectural Cost Consultants | Bibliotheca ITG LLC | Coffman Excavation, LLC |
| A-Absolute Comfort Heating & Cooling, Inc.* | Architectural Metalcrafters Inc. | Bid-Rite Services LLC | COLBI Technologies |
| Aaron Brothers | Architectural Specialties | Biella Lighting | Colliers International |
| ABHT Structural Engineers LLC* | Arcis Corporation | Blick Art Materials | Comcast |
| ABM Janitorial Services | Arctic Sheet Metal | Boanerges Group, LLC* | Commercial Design |
| Academy Specialties* | Armstrong Medical | Bonneville Environmental Foundation | Commercial Interior Finishes, LLC* |
| Acoustical Design Studio | Arrakis Professional Services* | Bookin Group, LLC | Compass Engineering* |
| Accurate Concrete Cutting, Inc. | Arrow Roofing & Sheet Metal | Borders | Concrete Sawing Co. |
| Accurate Installation Services, Inc.* | Art Elements | Brag Investments | Concrete Shop, Inc. |
| Accurate Land Surveys* | Art Heads | Brandsen | Conney Safety |
| Ace Consultants* | Art Media, Inc. | Hardwood Floors | Consolidated Business Machines |
| Ad Mail | Artek | Bratton Masonry, Inc.* | Constant Contact |
| Advanced Entry Systems | Ash Creek Associates | Bread & Butter Café | Container Store |
| Affolter, Marilyn | Asian Reporter | Bridge City Café | Convergint Technologies |
| Affordable Electric, Inc.* | Assessment Associates | Briggs, Jeremy | Coopers Coffee |
| AG Labs | Associated Business Systems | BRIX Paving Northwest | Esplanade, LLC |
| Air Rite Controls | Automotive Paint Specialties | Brocade | |
| AirGas | AYM * | Brown Contracting, Inc. | CornerStone Leadership Institute |
| All In One Mobility | B & B Masonry | Brundage Bone Concrete Pumping | Corporate Environments |
| Alliant Systems | B & H | Building Material Specialties | Cosco Fire Protection |
| Alpha Environmental* | BacGen Solar Group | Burt, Michael | Crestview Construction* |
| Aluron, Inc. | Badger Tree | Business Diversity Inst. | Crossfire Sprinkler Company* |
| Always On-Time Delivery, LLC | Bainbridge Interiors* | Buy.com | Crown Fire Systems* |
| A-Max Security Solutions, Inc. | Baker Rock Resources | CableOrganizer | Crystal & Sierra Springs |
| Amazon | Bank of the West | Café Voila | Culver Glass Co. |
| Ambrosini* | Barbur Blvd. Equipment Rentals, Inc. | Campbell's Custom Tile | Cummins Northwest, LLC |
| American Heating, Inc. | Barco Products | Capitol Electric | Custom Graphic Services |
| American Mailboxes USA | Baseline Surveying | Carlson Testing | Czopek & Erdenberger Inc.* |
| American Time | Basic Fire Protection | Carr Construction* | D & D Door |
| AmSan | Baurer Floor Covering | Carrillo's Janitorial Service* | Daily Journal of Commerce |
| Andersen Construction | BC Installation, Inc. | Cascade Hydro-Air* | Dallas Glass |
| Anderson Krygier* | Bear Printing | Cascade Pacific Counsel | Daniel Burke Environmental and Civil, Inc. |
| Anderson Pool Works | Bedrock Concrete Cutting* | Cascadia Region Green Building Council | Dao Architecture * |
| Anderson Roofing | Beecher Carlson | Cash's Drapery | David Evans & Assoc. |
| Anixter, Inc. | Bell Hardware | Cassim, Marie | Davis Hibbitts & Midghall, Inc |
| Ankrom Moisan Arch. | Benchmark Coatings, Inc.* | Castle Construction and Restoration* | Day CPM Services |
| Apollo Mechanical Contractors | Benham Appraisal | Caswell/Hertel Surveyors | Day Wireless Systems |
| Apollo Sheet Metal Corp. | Benson Industries | Catena Consulting Eng. | DDC United |
| Apple, Inc | | CB Management | DeaMor Associates |
| | | CB Richard Ellis | Dell Sales & Service |
| | | CCI | Dennis' Seven Dees Landscaping, Inc. |
| | | CDW Government | Desserts by Monet |
| | | Cedar Landscaping | Digital Works Productions, LLC. |
| | | Cedar Mill Construction Company | DiPrima Dolci Italian Bakery & Café |
| | | Century Link | Diverse Works, Inc.* |
| | | Certified Environmental Consulting | Diversification, Inc. |
| | | Chariot Group, Inc. | DLT Solutions |
| | | CHENGDU YIWO Tech. Dev. Co., LTD | Don Burke Excavation & Construction (DBEC)* |
| | | Cherry City Electric | Don Frank Floors |
| | | Chicago Title Insurance Co. | Donkin Construction* |
| | | Christenson Electric | Donna Silverberg Consulting* |
| | | Cipriano & Sons* | Double O Electronics |
| | | City Graphics | |
| | | City of Roses Disposal & Recycling | |
| | | City Sprint | |

Cascade Campus

TO KICK OFF construction of the underground parking garage, a new academic building and the new Student Center, the college gave away all the plants and trees in the existing parking lot between N. Albina Street and N. Mississippi Avenue just south of Jessup Street. With shovels in hand, more than a hundred community members showed up early Saturday morning, December 15, 2012, ready to take landscape bounty to their new homes.

To reduce impacts to neighbors, all construction staging on the new Cascade buildings and parking facility is taking place within the building construction footprint. Both of the new buildings are being built on top of the 210-stall parking structure. This unique and often more complex approach, led by Hoffman Construction, the college's construction manager/general contractor for the Cascade Campus, keeps neighborhood streets free of debris, long closures and detours to residential properties surrounding the construction site.

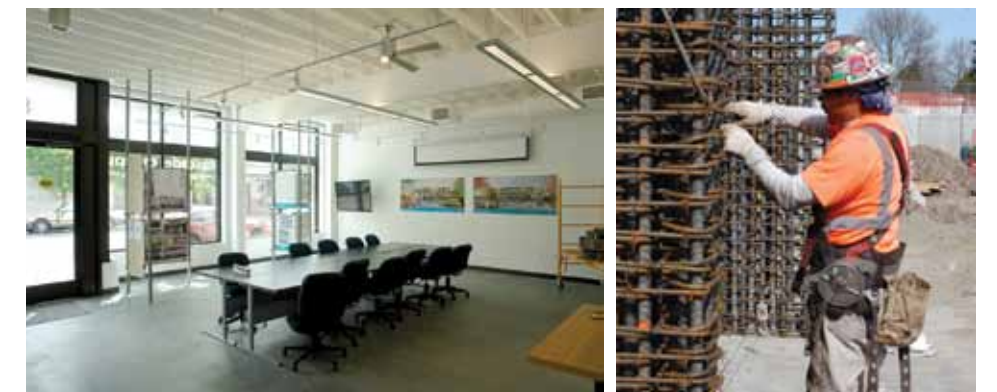
Immediately south of the square block construction site, woman-owned DAO Architecture completed design and Hoffman

Construction MWESB sub-contractors Pacificmark, Castle, Raimore and Star Construction companies as well as Affordable Electric, initiated the complete renovation of the college-owned Paragon Club property. Major campus construction kick-off, along with the transformation of the Paragon Club and sub-contractor use of the long-vacant Kenjaya building, also on N. Killingsworth Street, are all signs of vitality following nearly three years of careful planning with the community.

AS OF FALL 2013: The construction plan, along with good weather, has enabled construction to proceed quickly. Completion of the underground parking structure initiated construction of the new academic building and student center. The Campus Construction Learning Center (the former Paragon Club) opened with Hoffman Construction taking residence and neighborhood organizations welcoming the new meeting facility. New building access controls and cameras were installed in existing campus buildings, facilitating similar safety improvements throughout the college.



Left: Hoffman Construction crew members help community members dig out and bundle up free plants and trees.



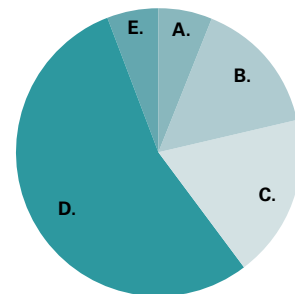
Above: Newly remodeled, the old Paragon Club in the heart of the N. Killingsworth commercial zone is temporarily housing Hoffman Construction offices and a community learning and meeting center. Photo: DAO Architecture

Bond-at-a-Glance

PCC Facility	Key Projects	Schedule
Downtown Center		Historical renovation – Opened 2009 LEED* Gold
Willow Creek Center		New construction – Opened 2010 LEED* Platinum
Newberg Center		New construction – Opened 2011 LEED* Net-Zero
Sylvania Campus	Library	Renovation – Opened 2012
	Health Tech. Bldg. Energy efficiency & pools	Upgrades – Opened 2012
Rock Creek Campus	Solar Array	New installation – Began generating May 2012
	Building 2 Career training support	Renovations – Phase I Opened 2012; Phase II – Est. start June 2014
	Building 7	Classroom addition - New construction – Opening April 2014
Cascade Campus	Building 5	Major addition - New construction – Est. start June 2014; Est. Opening Dec 2015
	New underground parking structure	New construction – Start Dec 2012; Opening Sept 2014
Southeast Center	New academic building	New construction – Start May 2013; Opening Sept 2014
	New student center	New construction – Start May 2013; Opening Jan 2015
Swan Island Center	Student commons building	New construction – Opening Jan 2014
	Library	New construction – Opening April 2014
	1911 building	Major remodel – Start Aug 2013; June 2014
Columbia County Center	Mt Tabor food service area	Major remodel – Opened Sept 2013
		Major remodel & new construction – Est. start Sept 2013; Opening Sept 2014
		New Construction – Planning to begin Jan 2014

*LEED: Leadership in Energy and Environmental Design is a rating system for the design, construction, operation, and maintenance of “green” or sustainable buildings. The PCC bond program is committed to reaching a minimum of Silver LEED designation for its new buildings.

PCC 2008 Bond Program Spending through June 30, 2013



A. Equipment	\$11,420,000	6%
B. Professional Services	\$27,900,000	15%
C. Land Acquisition	\$33,610,000	18%
D. Construction	\$100,130,000	55%
E. Bond Administration	\$10,340,000	6%
TOTAL	\$183,400,000	

Visit pcc.edu/about/administration/budget for audited college financial information.

- Drew Harrington Associates
- Drive Headquarters
- Dynalectric Company
- Earth-Centric, LLC* E-Builder
- EC America, Inc.
- EC Company
- Eddie's Flat Iron Pizza
- Eden Pest Control
- EDGE Tech Corp.
- Edmondson's Drapery, Inc.
- Electrical Distributing
- Electronic Goldmine
- Elephants Catering
- Elite Signs*
- Elmer's Flag & Banner
- Emerick Construction Co.
- Energy Performance Eng.*
- Energy Studies and Bldg. Lab.
- Enerspect
- Engineered Products
- Engineering Economics, Inc.
- Enigo
- Enjoni Café
- Enterprise Rent-A-Car
- Entrance Controls
- Environmental & Engineering Services
- Environments
- Envision Strategies
- Eoff Electric Supply
- ESECO
- Evolve Interiorscapes
- EZ Way
- Facade Group*
- Faison Construction*
- Falkenhayn, Nicky
- Fastsigns
- Faustrollean Fixture Company
- FedEx
- FFA Architecture & Interiors
- Fine Engineering
- Finish Line Concrete Cutting, Inc.
- Firestone Bldg. Products Co
- First American Title Co.
- Fisherman's-West Side
- Floor Factors
- Floor Solutions
- FMHUB, LLC
- Ford Graphics
- Form and Structure
- Fortis Construction
- Foundry Networks
- Fred Meyer
- Fred Shearer & Sons, Inc.
- Friendly Computers
- Fusion Headquarters
- Garland Company
- GBD Architects
- General Sheet Metal Works, Inc.*
- Geocon Northwest
- GeoDesign, Inc.
- Geotechnical Resources, Inc.
- Gerding Edlen Development
- Gibson Door*
- Gil Reynolds and Deep Blue
- Gillware, Inc.
- Global Industries
- Glumac
- GM Nameplate/SuperGraphics
- Graebel Moving
- Grand & Benedicts
- Grand Central Baking Co.
- Graybar Electric
- Green Art Landscaping*
- Green Building Certification Inst.
- Green Building Services
- Green Man Construction*
- Green Team Cleaning Services LLC*
- Greenbusch Group, Inc.*
- Gregory Law Landscape LLC*
- GRI
- Group AGB, Ltd.
- Groupware Technology, Inc.
- H & L Corporation*
- Hamblin, Kimberly Ann
- Harder Mechanical Contractors
- Harlen's Drywall
- Harper Houf Peterson
- Righellis
- Hawkins Delafield & Wood
- Heartsaver AED Consultants
- Heinz Mechanical
- Helen Bernhard Bakery
- Hennebery Eddy Arch.
- Heritage Glass
- Herman Miller
- Hewlett Packard Corp.
- Hillebrand Construction, Inc.*
- Hispanic Metropolitan Chamber
- Hoffman Construction Co.
- Hoffman Structures, Inc.
- Home Depot
- Howard S Wright Const.
- HP Public Sector Online Store
- Hughes Electrical
- Humboldt Gardens Opportunity Ctr
- Hunt Painting
- Huntco Supply, LLC
- Huser Integrated Tech.*
- Hydro Geo
- Hydro-Temp Mechanical Inc.
- i Deal LLC
- iDesign Solutions
- IES Commercial, Inc.
- Ingallina's Box Lunch, Inc.
- InLine Commercial Const.*
- Innovative Growth Solutions*
- Integra Realty
- Integra Telecom
- Integrated Systems Group
- Interact Group Corp.
- Interface Engineering
- Interior Office Solutions
- Interior Technology
- Interstate Special Events
- ISEC
- Isetani, Jiro
- James G. Pierson, Inc.*
- Jenkins Painting, LLC*
- JLA Public Involvement*
- JLC Arch.Consulting, P.C.*
- Jones Lang LaSalle
- K & L Gates LLP
- Kagin, Sarah
- Kathleen Jones Art
- Kathy H. Const. Cleanup*
- Kaul, Kimberlee
- Kellow, Frances
- Kemper Drywall
- Keylight and Shadow, LLC*
- KF Jacobsen
- Kidder Mathews
- Kittelson & Associates
- K-Log
- Kodiac Pacific Const. *
- Kone Corporation
- KPFF Consulting Eng.
- KRP Communications
- Krueger International
- Kuo, Siou L.
- Kwok, Man F.
- Lacey Glass, Inc.
- Laerdal Medical Corp.
- LaLonde Electric
- Lancaster Engineering
- Lancaster Logistics *
- Lango Hansen Landscape Arch.*
- Lanz Cabinets
- Le Sous Chef
- LEEKA *
- Legend Custom Woodworking, Inc.
- Legin Investment, LLC
- Legin Restaurant
- Lewis Audio
- Liberty Steel Erectors, Inc.*
- Liberty Wire
- Life Assist
- Lile International*
- Lindig Painting*
- Listen Acoustics
- Locates Down Under, Inc.
- Lockheed Martin
- Luma Lighting Design
- M & M Mechanical Maintenance
- m&m Innovations
- Mac Store
- MacDonald-Miller Facility Solutions
- Mailbox Solutions, LLC
- Mangold's Tree Service
- Mapping Solutions
- Marc Bowen Productions
- Marriott Hotels
- Maverick Media
- Mayer/Reed Landscape Arch.*
- Mayes Testing Engineers, Inc.
- McKinstry Services Corp.
- Melvin Mark Brokerage
- Mendoza, Gabriel
- Merryman Barnes Architects*
- Metro Data Resource Ctr.
- Metro Overhead Door
- MGH Associates
- Michele Reeves LLC*
- Miller Nash Attorneys
- Milne Masonry*
- Ming Surveyors, Inc.
- Minuteman Press
- Mitchell Video Prod.
- MLC Engineering*
- Modern Postcard
- Mohawk Electronics*
- Momentum Procurement Grp*
- Moody's Investors Service
- Moore Information Inc.
- Morel Ink
- Morrison Hershfield
- Moscato Ofner & Henningsen Inc.
- Mountain States Networking
- Mowry Rebar, Inc.
- Munitor Const., LLC*
- Nagel Distributors
- Nat'l Inst. of Gov. Purchasing
- Nat'l Assn. of Minority Contractors
- NCM Contracting Group
- Ness & Campbell Crane, Inc.
- Network Computing Architects
- Newberg Graphic
- Noble, Jennifer
- Norris & Stevens Inc.
- North Star Ballroom
- Northwest Control Co.
- Northwest Infrastructure, LLC*
- Northwest Masonry Restoration Co.*
- Nugent Masonry
- NW Electrical Contractors*
- NW Engineering Service

Southeast

OCTOBER 30, 2012, a rainy yet jubilant day greeted over 300 college and community members as they took part in formal ground breaking festivities at the Southeast Center. PCC students, faculty and staff rubbed shoulders with federal and state elected officials, people from the neighborhood, the business community and local public schools and organizations. The fun and lively event celebrated nearly two years of dialogue and planning about how to best serve and integrate the college and the growing outer southeast community. Over the course of the year the student commons and Library excavation, foundation and framing quickly emerged from the area that was once the Legin Restaurant and surface parking along 82nd Avenue and Division Street.

In fall 2012, the center's administrative office and college Occupational Skills Training, Career Pathways, and Community Education programs vacated their spaces in the Mt. Tabor Hall to make way for a new 48-student lecture hall and future build-out of a full-size cafeteria. The programs are temporarily housed in the wings of the 1911 German American Society building. In summer 2014, the administrative offices and programs will take permanent residency in the completely renovated historic main building.

Early in the campus planning effort, the college recognized the community and college value of integrating retail into the street frontage of its two new southeast buildings. Kidder Mathews, a property leasing firm, was hired to assist the bond program to advance the new retail opportunities along the 82nd Avenue ground floor of the student commons building and on Division Street in the southeast corner of the new Library.

AS OF FALL 2013: O'Neill/Walsh Community Builders, the college's construction manager/general contractor at Southeast, in partnership with InLine Commercial Construction, continue to work on parallel tracks. The exterior envelope and interior finishes are installed on all floors of the student commons building, and Library roofing and interior dry wall, insulation, mechanical, electrical and plumbing are progressing. The first phase of planned Mt. Tabor Hall improvements was completed and ready for the new 2013 fall term and demolition and construction on the main 1911 building is in full swing.



Top: A traditional “gold” shovel ground-breaking helped kick-off construction that will lead to the Southeast Center's transformation into a full comprehensive educational campus.

Middle and Bottom: Capturing Southeast's transformation, student photographers in a Community Education class entitled “Building Stories: Photographing the PCC Construction Site”, integrate the construction process with instruction.

Student photographers Betsy Geddes and Christ Gaede capture the Library and student commons buildings respectively.

Rock Creek

WITH THE BUDGET, permits and site work approved, demolition in full swing and weather mostly cooperating, construction on the addition to Building 7, led by Fortis Construction, the college's Rock Creek Campus construction manager/general contractor, swiftly progressed. Site utility work, foundation excavation, concrete footings and the pouring of the building slab were completed by February 2012. Erection of steel framing, which included a special beam signing event to commemorate campus construction, gave way to second floor construction and roofing. By the end of June the exterior skin, including installation of the glass curtain wall, was nearly complete.

Programming, planning and design development for Building 5 rapidly progressed with the decision to move the college's Central Distribution Department off campus. This will allow for campus maintenance and public safety to relocate to Building 1, freeing

up much needed student program space in the soon to be re-constructed Building 5.

By June 2012, the first phase of interior renovations in Building 2 was wrapping up. The long-awaited new paint booth and mixing room were installed and operational and the dust collection system for the Building Construction Technology program received county sign off for its planned fall 2013 completion.

AS OF FALL 2013: The exterior glass skin is complete and interior work on Building 7, including framing, mechanical, electrical and plumbing as well as furniture selection for student study spaces is on track for the spring 2014 opening. Washington County Clean Water Services approved the detention pond revitalization plan and over 47,000 new plant plugs are in the process of being planted to help better manage storm drainage. Building 5 final design and programming and work with the County on future transportation improvements to Springville Road continue.



Above: Benson Industries, sub-contractors to Fortis Construction, install external fritted glass panels that will shield sun while allowing light into the new addition to Building 7.



Left: Literally up to their knees in concrete, Faison, a local minority owned business, and Whittaker Construction crews lay the foundation for the new addition to Building 7. The bond program is committed to hiring local MWESB (minority, women-owned, or emerging small business) firms as part of its goal of providing local jobs and advancing skills in the workforce.

- | | | | |
|---|---|---|--|
| NW Enviro Search*
NW Geotech* | Percasso Coffee & Bottled Water Service, Inc. | San Diego Sign Company | Tremco |
| NW Information Services | Performance Abatement Services, Inc. | Sanderson Safety Supply Company | Tri Phase Electric*
TriMet |
| NW Natural Gas Co. | Performance Contracting, Inc. | Saraveza | Troxell Communications |
| NW Office Interiors*
NW Parking Equipment Co.
NW Resources | Pesznecker Brothers, Inc. | Saunders Company | TS Construction Mgmt. |
| NW School Equipment
NWMET | PGP Valuation | Sawtooth Caulking* | Turtle Mountain Const.* |
| NWR Construction, LLC* | Philippine Am. Chamber of Comm. | Saxton Bradley | Tyger Construction Co. |
| OAME (OR Assoc. of Minority Entrepreneurs) | Piedmont Rose Connection | Schindler Elevator Corporation | Unisource Worldwide, Inc. |
| OBP Signs & Graphics
Observatory, The
Office Depot
Office Max
Officeteam | Pioneer Waterproofing Co. | Schneider Electric | United Rentals |
| Ohlemiller, Marcia
Omni Interiors *
On Trac Delivery
O'Neil Electric *
O'Neill/Walsh Community Builders, LLC | Piper Jaffray & Company | Sears | UPS Store |
| On-Time Delivery
opsis architecture
Orbitz | Pizzicato | Security Contractor Services | US Bank Trust
Nat'l Assoc. |
| Oregon Air Reps
Oregon BEST (Built Environment & Sustainable Tech. Ctr)
Oregon Blueprint
Oregon Commercial Painters
Oregon Corrections Enterprises
Oregon Electric Group
Oregon Native American Chamber of Commerce
Oregon Tradeswomen, Inc.
Oregonian
Otak Inc
OVS - Aurora
Pacific Air Consultants, Inc.
Pacific Habitat Services
Pacific Northwest Title of OR
Pacific Office Furnishings
Pacific Shading Systems
Pacific Star Communications
Pacific Tile & Stone, Inc.*
Pacific Window Tinting*
Pacificmark Const.Corp.*
Padlocks 4 Less
PAE Consulting Eng. Inc.
PaperClip Communications
Party Place
Party Pros
PBS Engineering
PBS Supply Company, Inc.
Pence/Kelly Concrete, LLC
Penhall Company
Peninsula Plumbing | Portland Business Journal
Portland Coatings*
Portland General Electric
Portland Music Co.
Powell's Bookstore
PR Worth, Inc.
PRC Excavation & Concrete, Inc.
Precision Images
Print Results
Printing Today
Prof. Minority Group*
Prof. Service Industries
Project Management Resources*
Public Affairs Counsel, Inc.
Puget Sound Business Journal
Pyle, Karen Graphic Design
Quintana, Cheryl
R&H/Colas Construction*
Raimore Construction*
RainDance Coffee
Rayborn's Plumbing, Inc.*
Raz Transportation
Razchols Art Works
RB Development Corp.
RDF Builders
Reliant Plumbing & Mech. Inc.*
Renewable Choice Energy
Rexell Taylor
Reynolds, Carmen
Ricca-Newmark
Richard Brown Architect
Rider Levett Bucknall Cost Est.
Right! Systems, Inc.
Right-of-Way Assoc., Inc.*
River City Environmental
River City Rebar, LLC*
Rivers Edge Catering
Rose City Contracting
RSP Associates, LLC
Rubensteins Contract Carpeting
Safway Services, LLC. | SERA Architects
Service Paper Company
ServiceMaster Bldg. Maint.*
Sherwin-Williams Co.
Siam Society
Siegnor and Company
Signs Now
Northwest Inc.
Skanska USA Building Inc.
Skyline Sheetmetal
SkyShots Aerial Photography
Smart Wireless
Smith CFI
Smooth Move People, Inc.
Snyder Roofing
Solar City
Solar Winds.Net, Inc.
SourceMedia Inc
Sparling
Spectra Contract Flooring
Spectrum Interiors, Inc.
Spellman Consulting
SRG Partnership
Standard & Poors Investment
Stanley Convergent Security Co.
Staples
Star Const.Services*
Starbucks
Stewart Marketing Grp, LLC*
Stoner Electric
Structural 21, LLC*
Sunbelt Rentals
Superior Interiors*
Swag NW
Swanson, Kent
Systems News Online
T. J. Nisbet Const., Inc.
TA Onchi
Teufel Landscaping
THA Architects
The Wood Doctor
ThyssenKrupp Elevator
TL Davison
Total Mechanical Inc.
Trade Marx Sign & Display
Triails
Trashco
TRC & Associates, LLC | US Green Building Council
US Markerboard
Utrecht Art Supplies
Valley Growers Nursery & Landscape, Inc.*
Vancouver Paving Co. *
Vancouver Roofing & Sheetmetal Co.*
Verizon
Vidacare Corporation
Viking Automatic Sprinkler Co.
Visucate
W. B. Painting*
Waco Scaffolding & Equipment Co.
Walker Macy Landscaping
Wallace Steel
Walsh Construction Co.
Walter E Nelson
Washington Automated, Inc.
Waterleaf Architecture
Watts, Pam
WB Painting & Decorating, Inc.*
WCP Solutions
WE Given Contracting, Inc.
Weatherproofing Technologies Inc.
West Elm
Westech Construction Inc.
Western Financial Grp.
Western Partitions Inc.
Westlake Consultants
Westside Economic Alliance
WFJ Janitorial Services*
WH Cress
White, Karen
Willamette Express
Wilco Painting
Winegarden, Ronald
Winstead & Associates
Winterbrook Planning
WiseNet
Witt Associates
WS Contracting
XPEDX
Yorke & Curtis Inc.
Zagg
Zavala Corp*
Zoll Medical Corp. |

Sylvania Campus



Completed renovations introduce new integrated computer resource and tutoring centers into the library.

THE MAJORITY of the bond work at the Sylvania Campus is renovation and is being performed by Howard S. Wright Construction, the college's construction manager/general contractor for the Sylvania Campus. This means that construction crews must work on a compressed summer schedule to get as much done as possible during the summer to minimize disruption during the busy academic year. By the end of summer 2012, the new Automotive Storage building, complete renovation of Science Technology (ST) chemistry labs and office spaces, upgrades to the existing lap and diving pools in the Health Technology (HT) and the major Library renovation were all ready for the start of the fall 2012 term.

With space made available to temporarily house those displaced by the first phase of major improvements to the College Center (CC), design, pricing, final construction documents, bidding and permitting proceeded throughout the fall and winter months. Construction also took place on the ground floor of the HT building to accommodate Campus Technology Services, which had been housed in the soon to be renovated southeast corner of the CC building. In other work, the campus administration areas were improved, a new information desk was created adjacent to these quarters and construction began on the new exterior elevator on the north side of the CC building. The elevator, anticipated



Howard S. Wright construction crews worked within the narrow summer window to completely remodel the chemistry labs.

to be completed late fall 2013, will provide greater ADA accessibility to all levels of the CC building.

AS OF FALL 2013: Students, faculty and staff arriving on campus fall 2013, were met with the southeast corner of the CC building cordoned off and under full construction. Over the summer an expansive sign program was put in place to ease access and way finding around the construction zone and to programs that now reside in new temporary quarters. Renovations to the Automotive and Metals (AM), Social Science (SS) and HT buildings, including upgrades to the HVAC system, were all complete and ready for the fall 2013 term and the new elevator is on time and on budget for opening as planned.



Non-Profit
Organization
U.S. Postage
PAID
Portland, Oregon
Permit No. 37

BOND UPDATE

Elsewhere around the college

Swan Island Center

THE COLLEGE AWARDED a construction services contract to JE Dunn Construction to renovate and expand the State of Oregon Motor Pool Facility purchased by PCC in 2010. Selective demolition of the existing structure and excavation for the new addition has begun. The new 20,000 sq. ft. center offering trade technology programs will be complete summer 2014.

Columbia County Center

THE COLLEGE CONTINUES to work to identify possible sites to establish a small educational center in Columbia County. Additional programming conversations with the community are planned for early 2014.

Willow Creek Center

MUCH TO THE DELIGHT of Willow Creek users, commuters and the adjacent community, Terra Verde, a new café on the ground-floor of the Willow Creek Center, opened fall 2013. The college's first foray into integrating retail into its buildings moved into high gear with the signing of the lease agreement and the completion of owner improvements.

*For more
information visit
bond.pcc.edu
or call the bond
helpline at
971-722-8454*