

Sylvania Campus

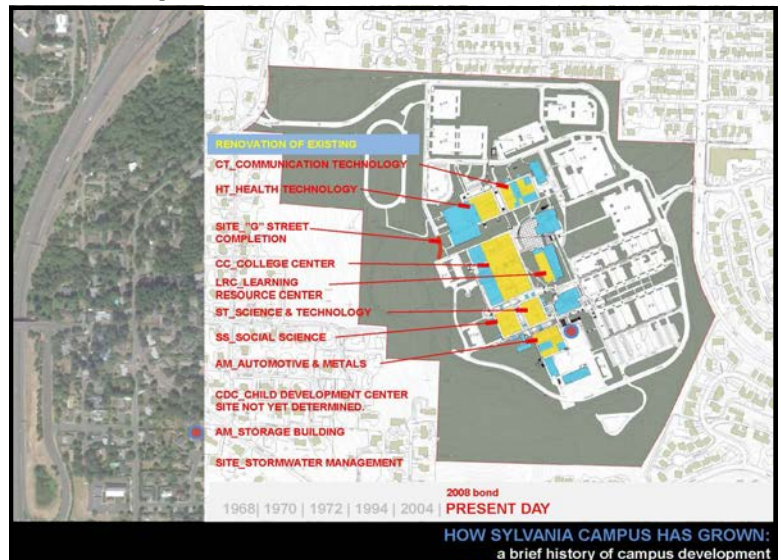
PCC BOND PROGRAMS: 50 YEARS OF COMMUNITY SUPPORT

We are on the web:
bond.pcc.edu

First established in 1968, Sylvania is the oldest and largest PCC campus. The 2008 Bond is providing the funds to renovate and upgrade 165,000 sf, modernizing facilities and infrastructure, such as an aging and inefficient boiler system. With the 1970 College Center (CC) slated for a virtual overhaul, much of

the recent work has involved programming and future planning conversations with the many CC inhabitants -

all with an eye on energy efficiency and long-term sustainability.



Downtown Center



PCC Downtown Center, 2010

One of the first buildings to come out of the 2008 Bond Program, the Downtown Center centralizes PCC Human Resource, Finance, Community Education and Affirmative Action Services, among oth-

ers. The remodeled structure, formerly known as the Wilamette Building, in downtown Portland met the highest standards for sustainability and energy efficiency for an historical renovation.

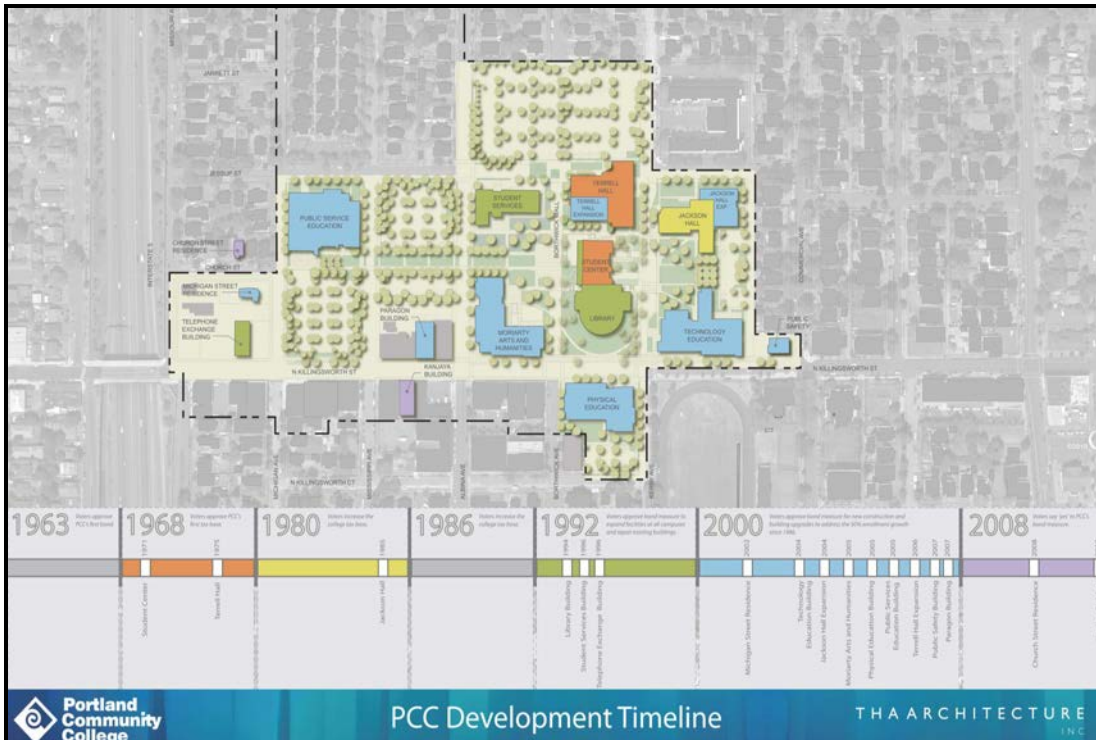
Cascade Campus

In 1970, the former Cascade College became PCC's second campus – the Cascade Center. Funding measures in 1986

and 2000 saw the emergence of a full array of course offerings and new buildings. The 2008 Bond effort is com-

mitted to broad stakeholder engagement with adjoining neighborhood and business community as well

as the diverse internal community. The past year has focused on developing a site plan for a new Student Center and Academic Building that will serve the burgeoning enrollment, while simultaneously catalyze the Killingsworth and Albina Commercial Districts.



Willow Creek



The 100,000 sf educational center opened in late 2009. Funded by the 2008 Bond Program in partnership with TriMet and with special funding from the state, the Center serves as a one-stop for the unemployed and under-employed

and is home to programs such as GED classes, certified nursing assistant training, medical assisting and emergency medical services. It also houses a new Portland State University Fast Track Bachelor's Degree Program.

Southeast Center

The Southeast Center has experienced unprecedented growth in enrollment since opening in its current location in 2004. To better serve the community, PCC has decided to expand Southeast to be a full blown campus with capacity to serve around 20,000 students by the end of

the next bond cycle. To allow room for this growth, PCC purchased the German American Society site in 2009. Southeast will grow its academic capacity by adding science labs, engineering technology classrooms, a library, tutoring space, and more general purpose classrooms.

The 2020 campus will support the commercial areas on 82nd Avenue and Division Street, as

well as creating a place for the residential neighborhoods the campus serves.



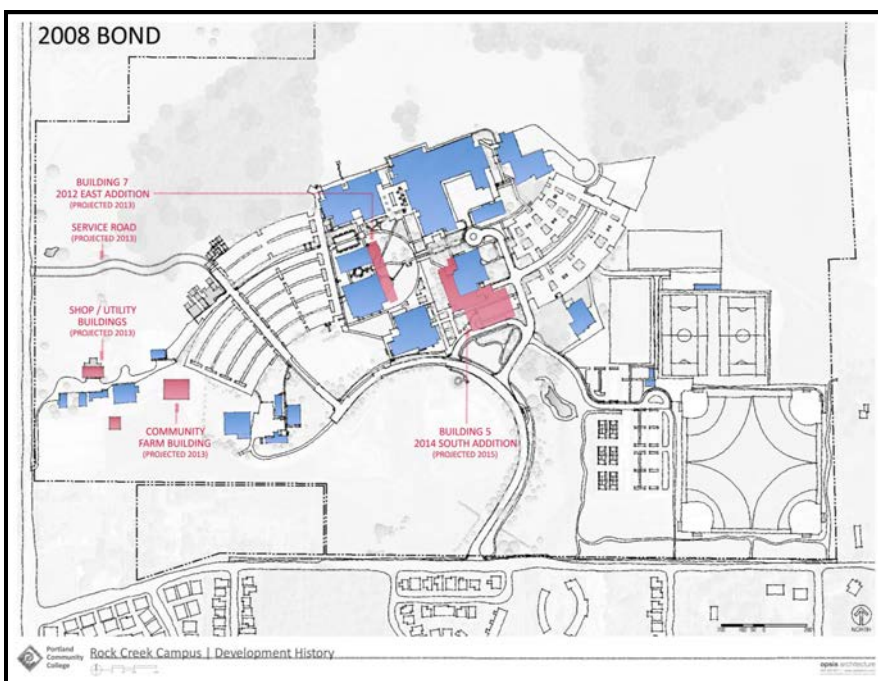
Rock Creek

In 1976, Rock Creek Campus was nestled amid farm and wetland and well beyond the urbanized cen-

tral city. The 1982, 1992 and 2000 funding measures supported building expansion enabling

high quality transfer education and career-focused programs including a 17,000 sf aviation hanger to

support services. The 2008 Bond Program is advancing Rock Creek's long-standing connection to the area's green, high and bio-tech industries by introducing even greater sustainability. This includes implementation of renewable energy technology, expansion of the learning garden, and an energy efficient addition to Building 7, planned for summer



support aviation science. The capital funds also supported the expansion of the science program, a new library and bookstore and student

Newberg Center

PCC's newest Center open to students fall 2011. The public grand opening is scheduled for Saturday, October 22. The Center, funded through the 2008 Bond Program, will be PCC's first visual presence in the Newberg/Dundee area. As part of the college's commitment to stakeholder engagement, PCC created the Newberg Advisory Committee – a group of community leaders representing a variety of local organizations and city government – to gather input to create a Center consistent with the community's vision and needs. The building is targeting LEED Platinum certification and on the path to Net Zero with a 55% energy reduction over

Oregon Code and 20% of the building's electricity needs met by a roof mounted Solar Array.

Phase One of the Newberg Center consists of 13,000 sf of building, including three standard classrooms, a Multi-Purpose Room, a large Student Commons, an administrative suite, and a reception area. PCC has purchased approximately 16 acres at the site to allow for potential future expansion of the Center. The master plan for the entire site includes a full build-out of 140,000 sf of building and 350 parking spaces.



Save the Date!

Newberg Center's Grand Opening
Wednesday, October 22, 2011

PCC, in collaboration with Newberg city leaders, is planning an official opening celebration.