

# **Steering Committee Meeting North Stars & Design Process Update**

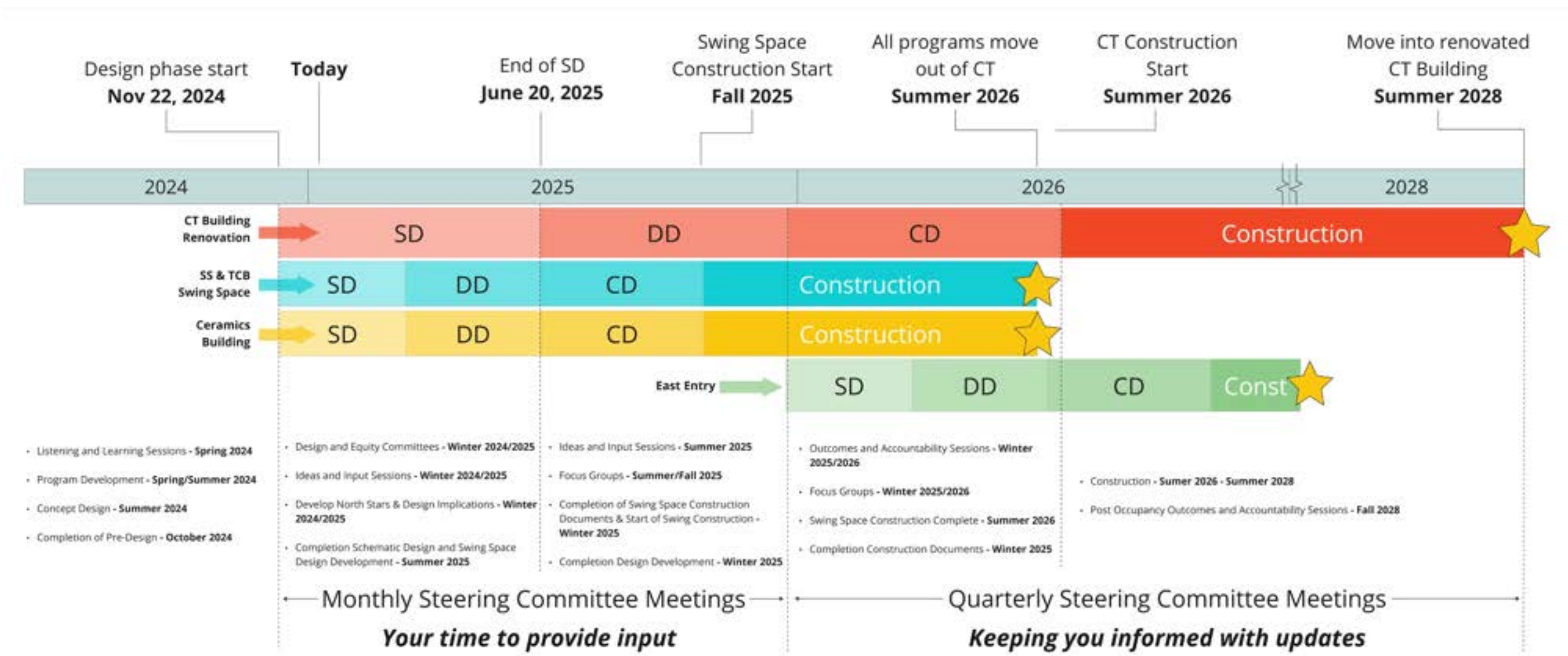
January 10, 2025

# Agenda

- Schedule
- Design Process overview
- North Stars
- Design Implications
- Design Story
- Current building layout
- Next Steps



# Project Schedule

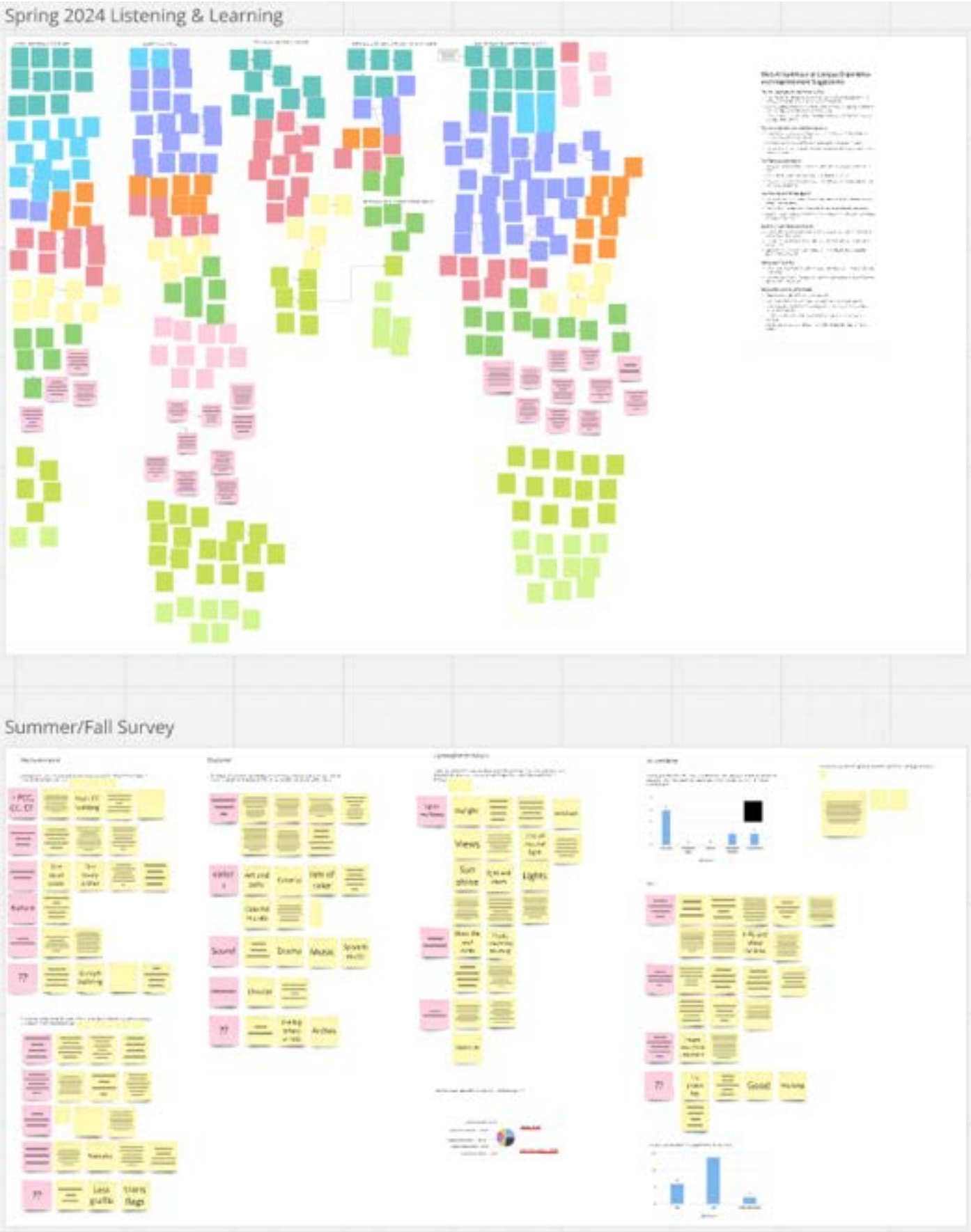


- Programmatic Engagement Meetings
- Design and Construction Coordinated Work Plan
- 4-Week Look Ahead

# Design Process



# Listening & Learning



# North Stars

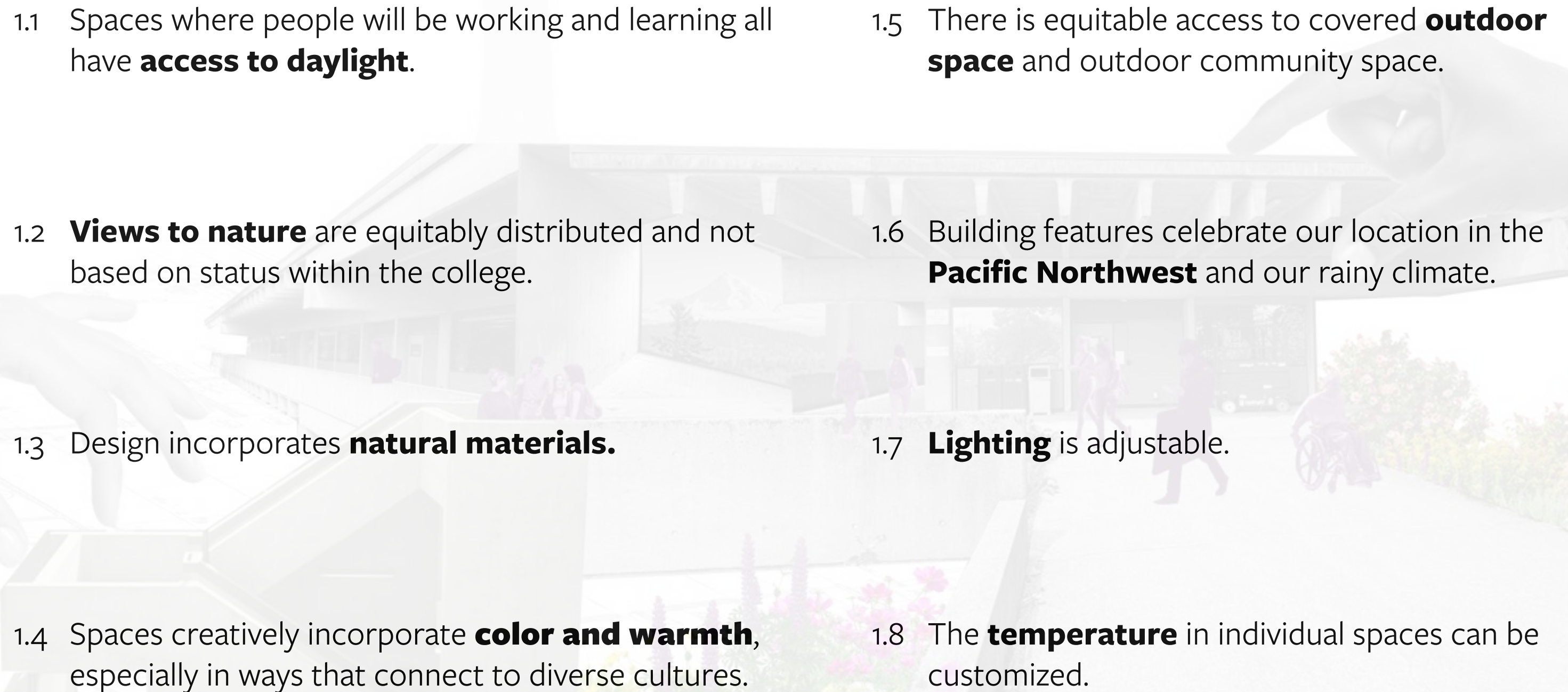
**1. Rooted in Place**

**2. Part of a Connected  
Campus**

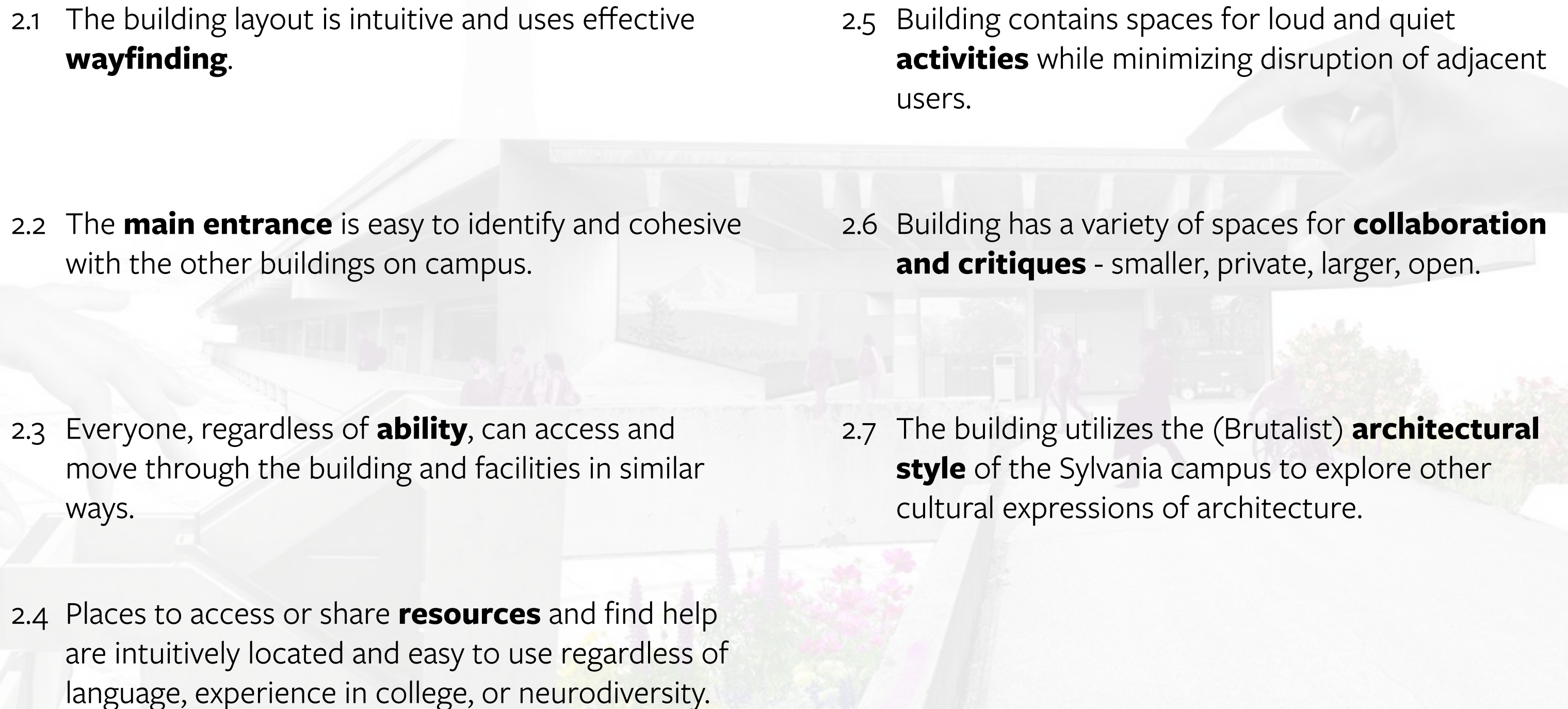
**3. A Home of, for and by  
Creatives**

**4. Representation**

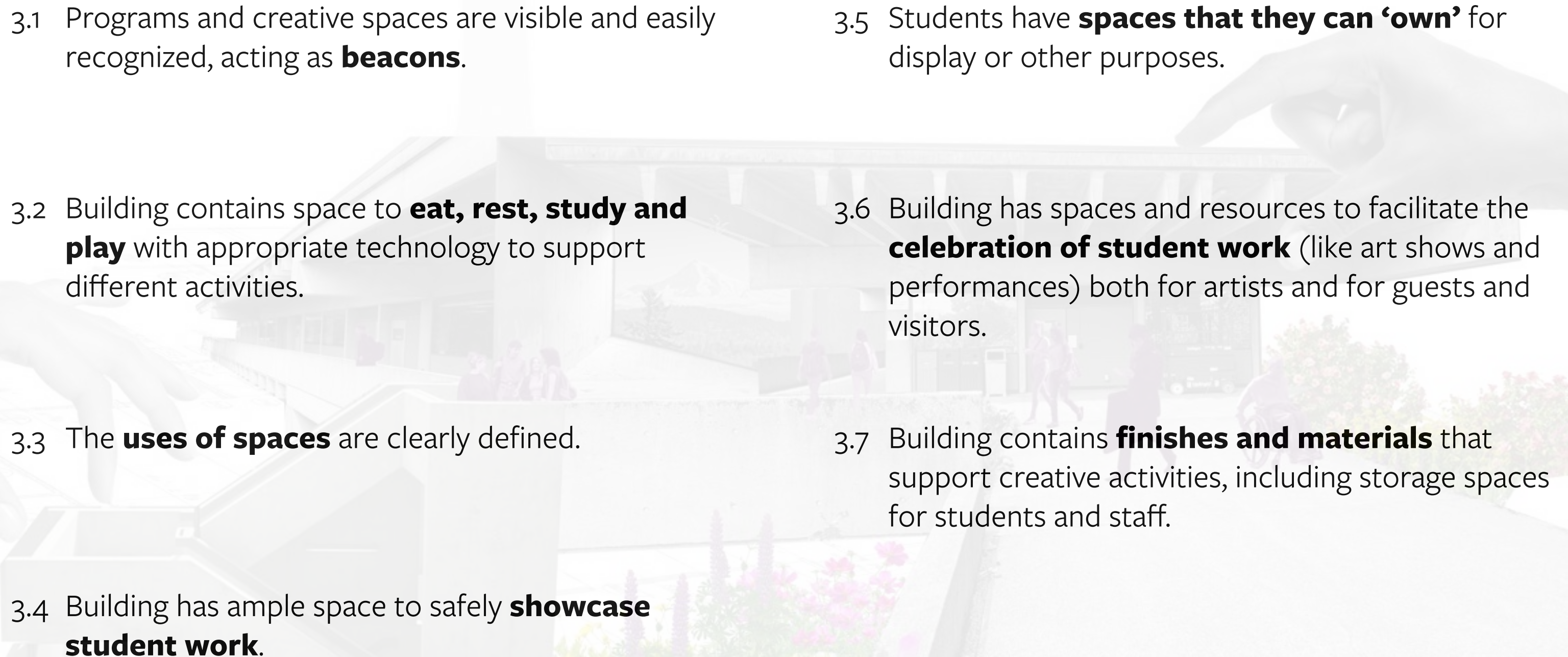
# 1. Rooted in Place

- 
- 1.1 Spaces where people will be working and learning all have **access to daylight**.
- 1.2 **Views to nature** are equitably distributed and not based on status within the college.
- 1.3 Design incorporates **natural materials**.
- 1.4 Spaces creatively incorporate **color and warmth**, especially in ways that connect to diverse cultures.
- 1.5 There is equitable access to covered **outdoor space** and outdoor community space.
- 1.6 Building features celebrate our location in the **Pacific Northwest** and our rainy climate.
- 1.7 **Lighting** is adjustable.
- 1.8 The **temperature** in individual spaces can be customized.

## 2. Part of a Connected Campus

- 
- 2.1 The building layout is intuitive and uses effective **wayfinding**.
  - 2.2 The **main entrance** is easy to identify and cohesive with the other buildings on campus.
  - 2.3 Everyone, regardless of **ability**, can access and move through the building and facilities in similar ways.
  - 2.4 Places to access or share **resources** and find help are intuitively located and easy to use regardless of language, experience in college, or neurodiversity.
  - 2.5 Building contains spaces for loud and quiet **activities** while minimizing disruption of adjacent users.
  - 2.6 Building has a variety of spaces for **collaboration and critiques** - smaller, private, larger, open.
  - 2.7 The building utilizes the (Brutalist) **architectural style** of the Sylvania campus to explore other cultural expressions of architecture.

# 3. A Home of, for and by Creatives

- 
- 3.1 Programs and creative spaces are visible and easily recognized, acting as **beacons**.
  - 3.2 Building contains space to **eat, rest, study and play** with appropriate technology to support different activities.
  - 3.3 The **uses of spaces** are clearly defined.
  - 3.4 Building has ample space to safely **showcase student work**.
  - 3.5 Students have **spaces that they can 'own'** for display or other purposes.
  - 3.6 Building has spaces and resources to facilitate the **celebration of student work** (like art shows and performances) both for artists and for guests and visitors.
  - 3.7 Building contains **finishes and materials** that support creative activities, including storage spaces for students and staff.

# 4. Representation

- 
- 4.1 Building creates opportunities for cultural, racial, intergenerational and religious\* **representation** of PCC's diverse student population.
  - 4.2 Representation **opportunities are flexible** and can change to accommodate different needs and changes in PCC's demographics.
  - 4.3 People can choose a **restroom** that suits their identity and needs.
  - 4.4 Building contains restrooms that can also serve as **changing rooms**.
  - 4.5 People with disabilities and different body sizes can **equitably use building spaces and amenities**.
  - 4.6 Building includes artistic features that **humanize spaces** and welcome users with marginalized identities.

*\*Included per DEC member comment, need to review with PCC*

## 1. Rooted in Place

- 1.1 Spaces where people will be working and learning all have access to daylight.
- 1.2 Views to nature are equitably distributed and not based on status within the college.
- 1.3 Design incorporates natural materials.
- 1.4 Spaces creatively incorporate color and warmth, especially in ways that connect to diverse cultures.
- 1.5 There is equitable access to covered outdoor space and outdoor community space.
- 1.6 Building features celebrate our location in the Pacific Northwest and our rainy climate.
- 1.7 Lighting is adjustable
- 1.8 The temperature in individual spaces can be customized.

## 2. Part of a Connected Campus

- 2.1 The building layout is intuitive and uses effective wayfinding.
- 2.2 The main entrance is easy to identify and cohesive with the other buildings on campus.
- 2.3 Everyone, regardless of ability, can access and move through the building and facilities in similar ways.
- 2.4 Places to access or share resources and find help are intuitively located and easy to use regardless of language, experience in college, or neurodiversity.
- 2.5 Building contains spaces for loud and quiet activities while minimizing disruption of adjacent users.
- 2.6 Building has a variety of spaces for collaboration and critiques - smaller, private, larger, open.
- 2.7 The building utilizes the (Brutalist) architectural style of the Sylvania campus to explore other cultural expressions of architecture.

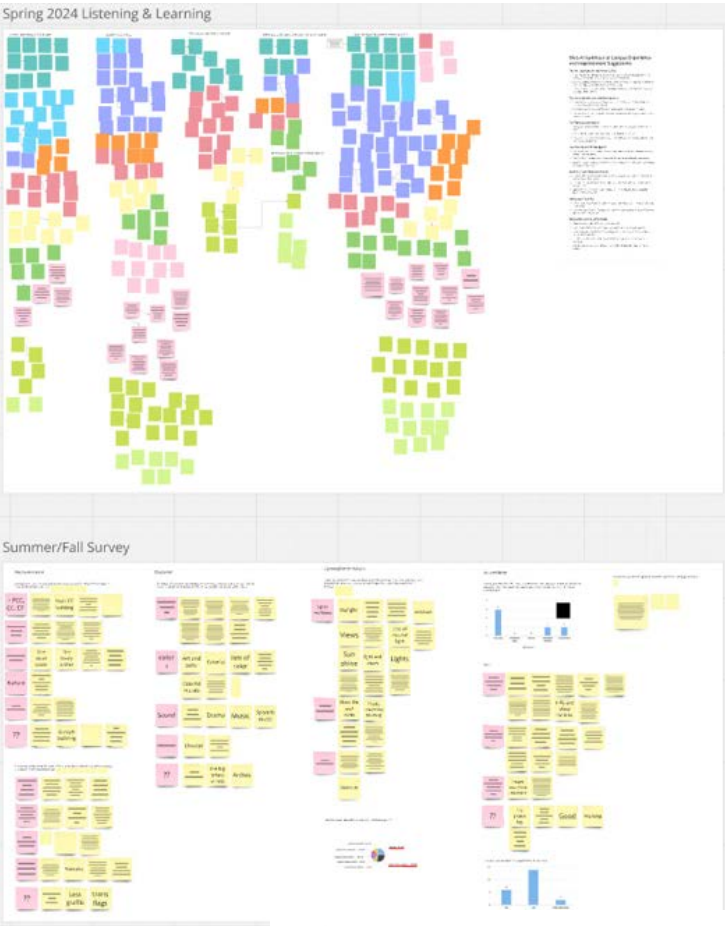
## 3. A Home of, for and by Creatives

- 3.1 Programs and creative spaces are visible and easily recognized, acting as beacons.
- 3.2 Building contains space to eat, rest, study and play with appropriate technology to support different activities.
- 3.3 The uses of spaces are clearly defined.
- 3.4 Building has ample space to safely showcase student work.
- 3.5 Students have spaces that they can 'own' for display or other purposes.
- 3.6 Building has spaces and resources to facilitate the celebration of student work (like art shows and performances) both for artists and for guests and visitors.
- 3.7 Building contains finishes and materials that support creative activities, including storage spaces for students and staff.

## 4. Representation

- 4.1 Building creates opportunities for cultural, racial, intergenerational and religious\* representation of PCC's diverse student population.
- 4.2 Representation opportunities are flexible and can change to accommodate different needs and changes in PCC's demographics.
- 4.3 People can choose a restroom that suits their identity and needs.
- 4.4 Building contains restrooms that can also serve as changing rooms.
- 4.5 People with disabilities and different body sizes can equitably use building spaces and amenities.
- 4.6 Building includes artistic features that humanize spaces and welcome users with marginalized identities

# Design Story



**1. Rooted in Place**

**2. Part of a Connected Campus**

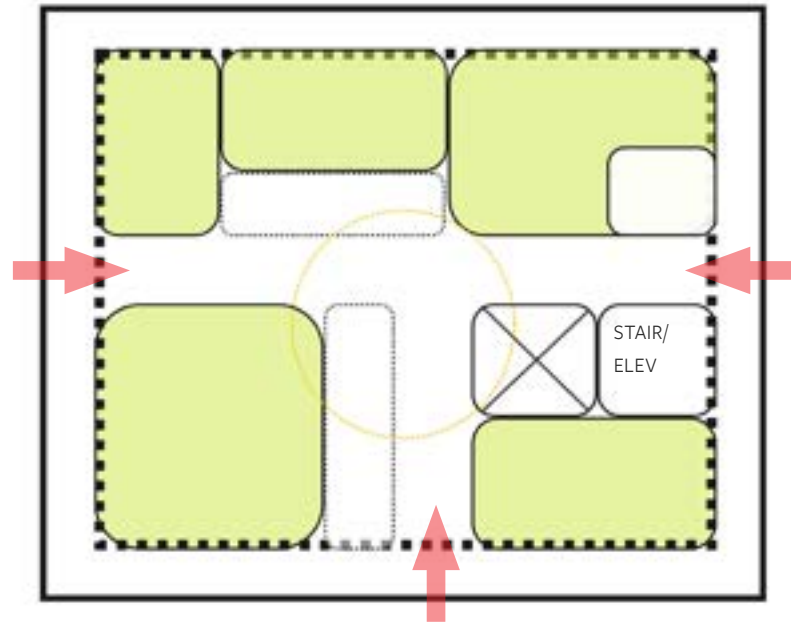
**3. A Home of, for and by Creatives**

**4. Representation**

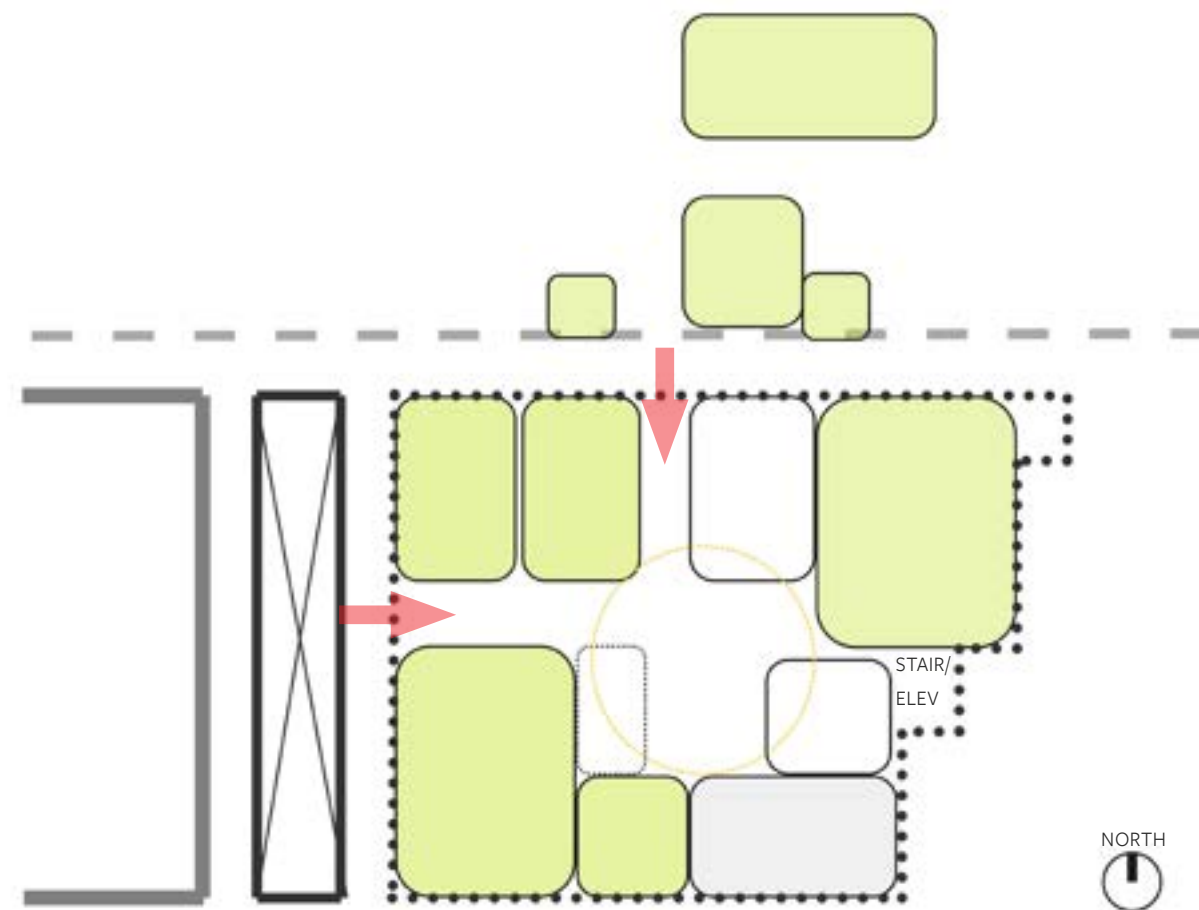


*art and cultural representation*

The **Design Story** is the narrative and visual framework that forms the basis for the project design.



LEVEL 2 PLAN



LEVEL 1 PLAN

# Next Steps

## Programmatic and Affinity Focus Groups

### February 14: Steering Committee Meeting

- Project schedule updates including 4-week look-ahead
- Program and plan layout review
- Design Equity Committee update





Questions?