

# **Steering Committee Meeting**

## Design Process & Design Equity

### Committee Update

February 14, 2025

# Agenda

Project Schedule

Design Process Overview

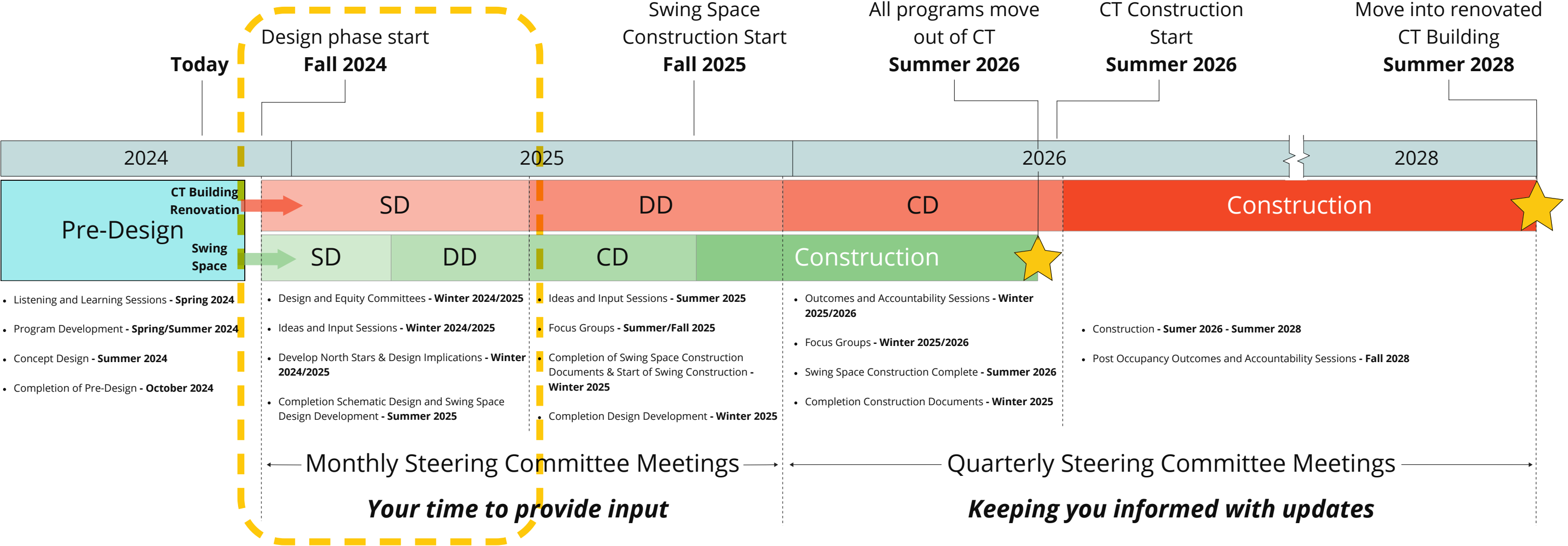
Current Building Layout

Temporary & Permanent Relocations

Next Steps



# Project Schedule



- Programmatic Engagement Meetings
- Design and Construction Coordinated Work Plan
- 4-Week Look Ahead

# Design Process Overview



## Design Equity Committee

- Meeting next week to discuss experiential qualities of space and cultural expression
- January: reviewed North Stars and design Implications

## Programmatic Focus Groups

- Reviewing initial test fits with user groups next week
- We will discuss adjacencies, room layouts, and the equipment inventory spreadsheets

## Community Engagement

- Continuing affinity-based engagement with the goal of exploring how cultural representation is reflected in the building in a meaningful and authentic way
- Engaging students who are present in the building, centering those impacted by inequity

## General Design

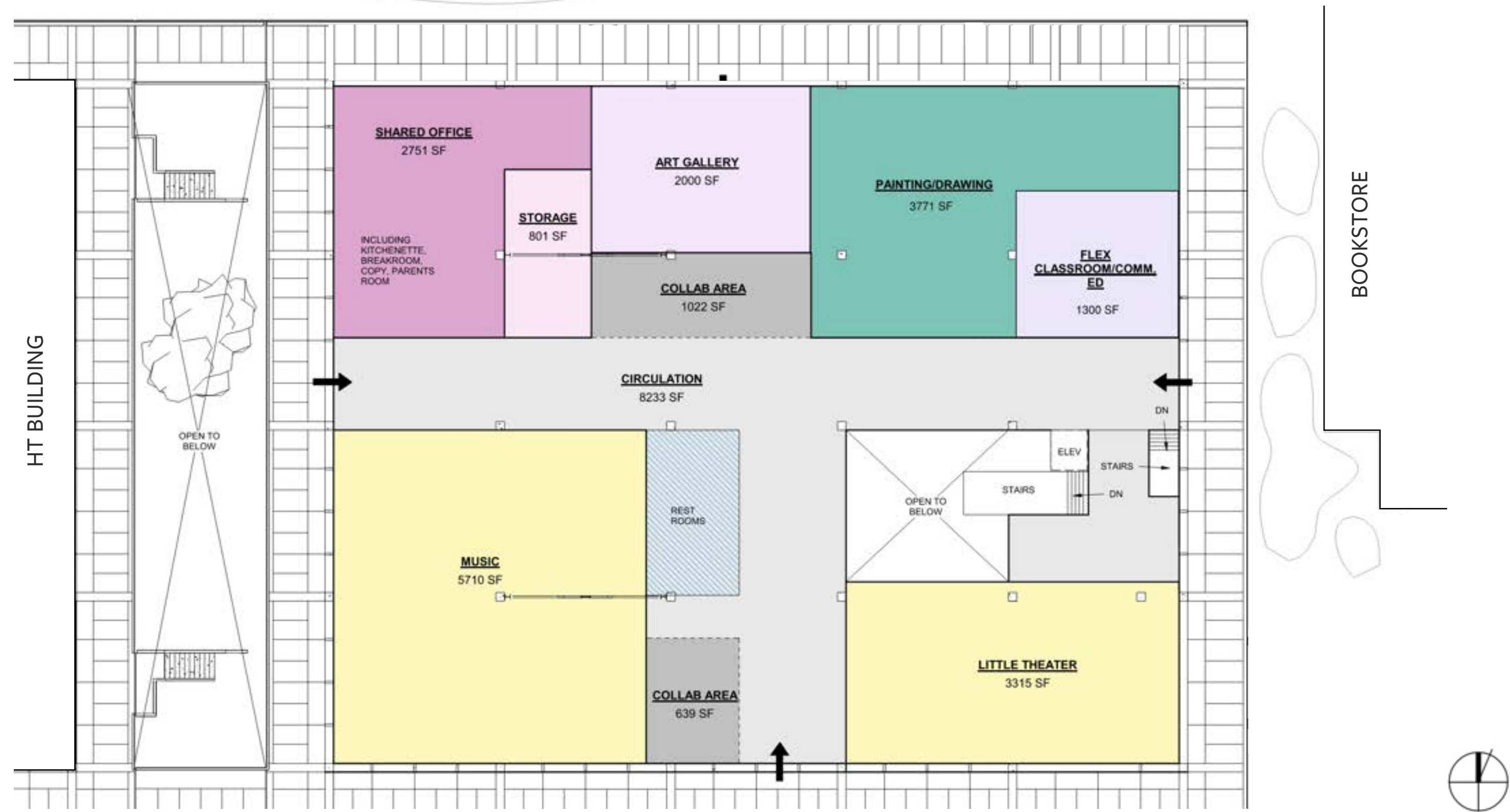
- Exploring alternate configurations of common spaces and collaboration areas to ensure they align with our North Stars



# Proposed Level 1 Layout



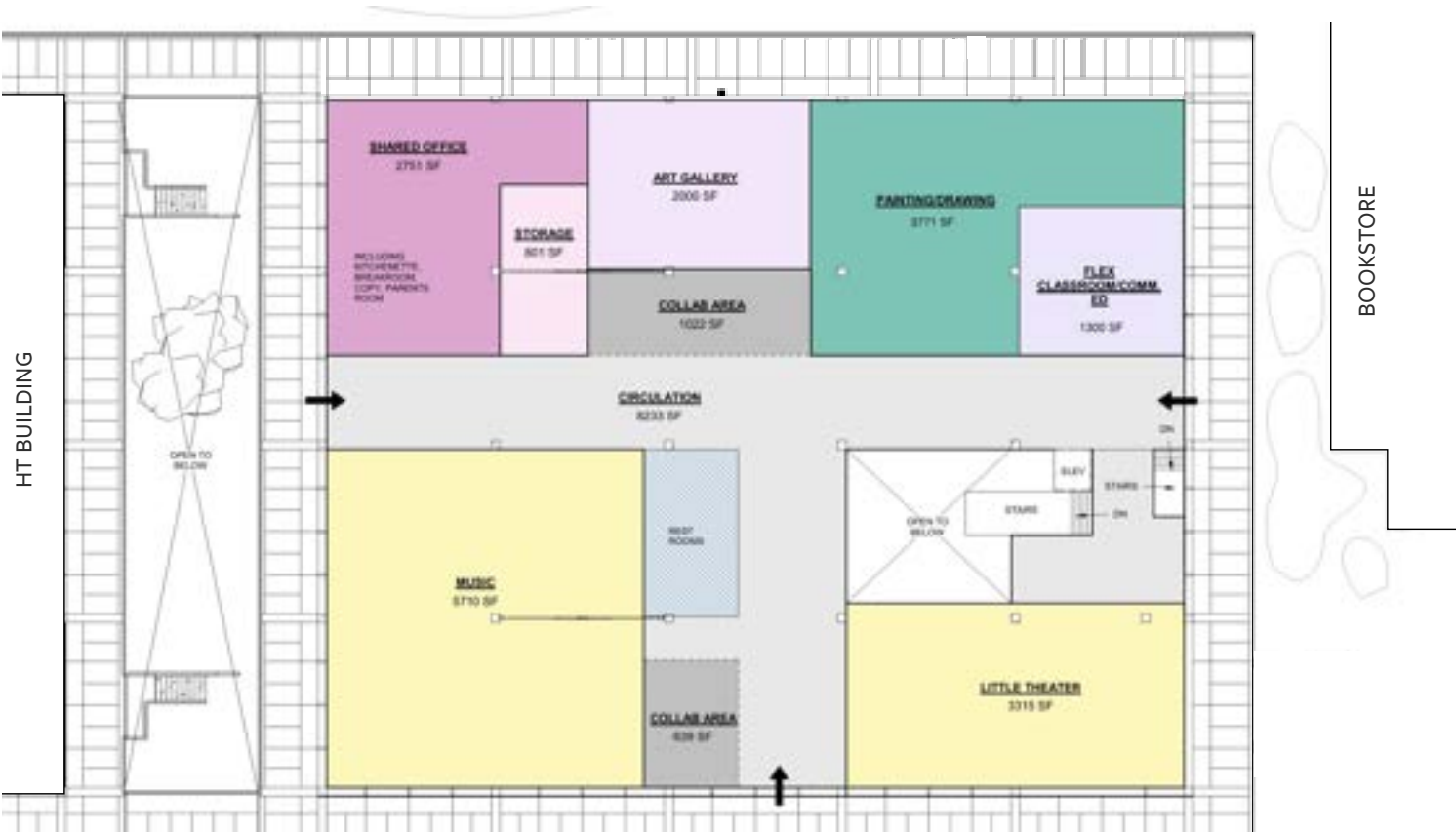
# Proposed Level 2 Layout



# Proposed Building Layout



Level 1



Level 2



# Renovation Projects - Temporary & Permanent Relocations

- Temporary and permanent relocations of all existing programs will involve your participation in the design process to ensure the renovations meet all programmatic needs
- Initial test fit meetings will take place over a period of 3-4 weeks in February and March
- We will work with plan views to arrange furniture, equipment, and other program requirements to “test” whether everything fits into the proposed spaces
- Test fits are an iterative process and will be revised based on feedback until we are confident that these spaces will meet all programmatic needs



# Next Steps

**February 21:** Design Equity Committee meeting

**February 17-24:** Programmatic Focus Group meetings

**March 14:** Next Steering Committee meeting





An aerial photograph of a school campus. The central part of the image shows a large, multi-story school building with a flat roof. To the right of the building is a green athletic field with a blue track. Several parking lots are visible, some with cars parked. The campus is surrounded by dense green trees. In the bottom left corner, there is a residential area with houses and a road. The word "Questions?" is overlaid in the center of the image in a large, white, outlined font.

Questions?