

Agenda

PROJECT OVERVIEW

SCHEDULE

ENGAGEMENT AND PROGRAMMING

CT & Campus Center - January 2025

East Entry - Summer 2025

CONCEPT DESIGNS

Site

East Entry

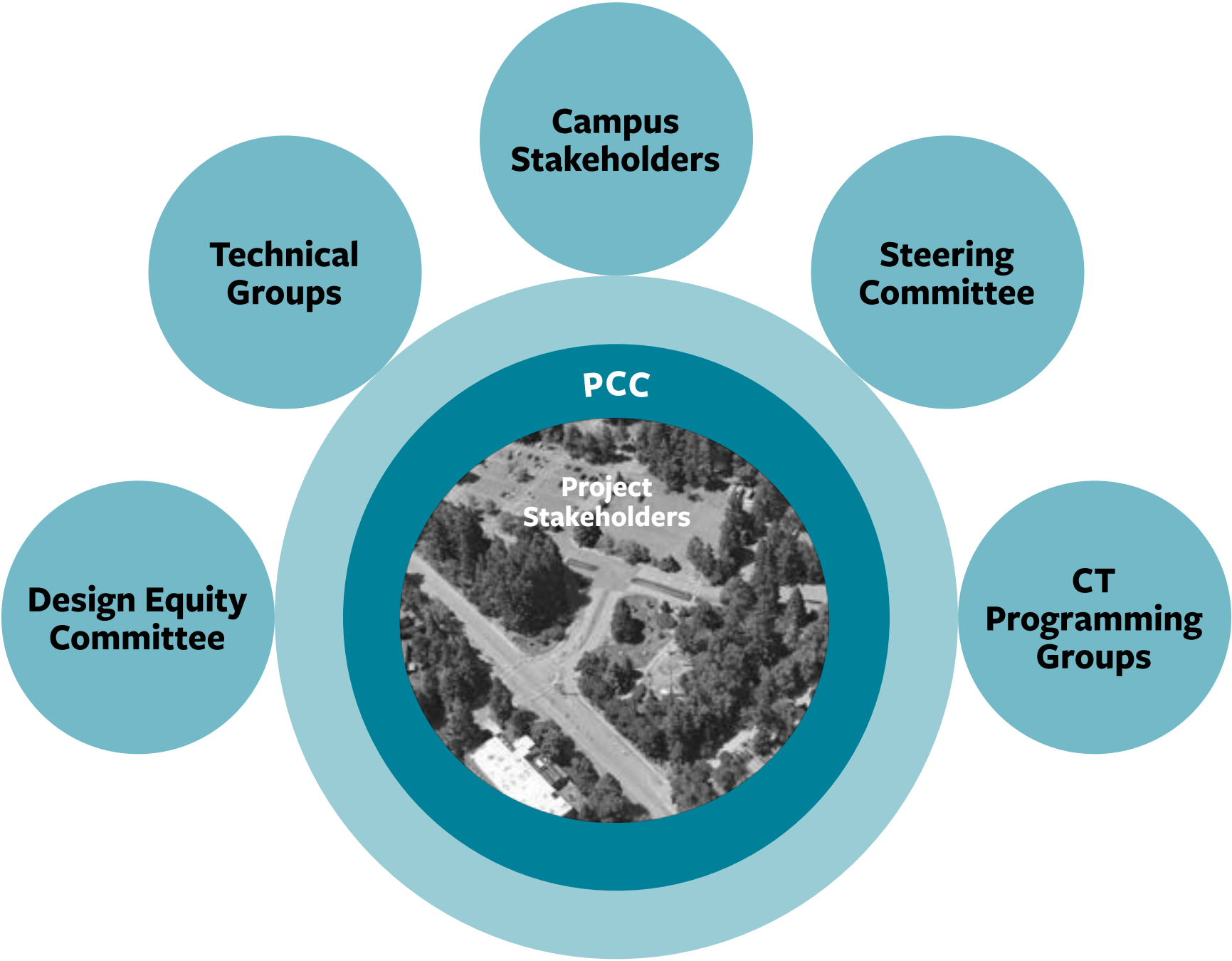
QUESTIONS



Project Team Organization



Engagement Framework



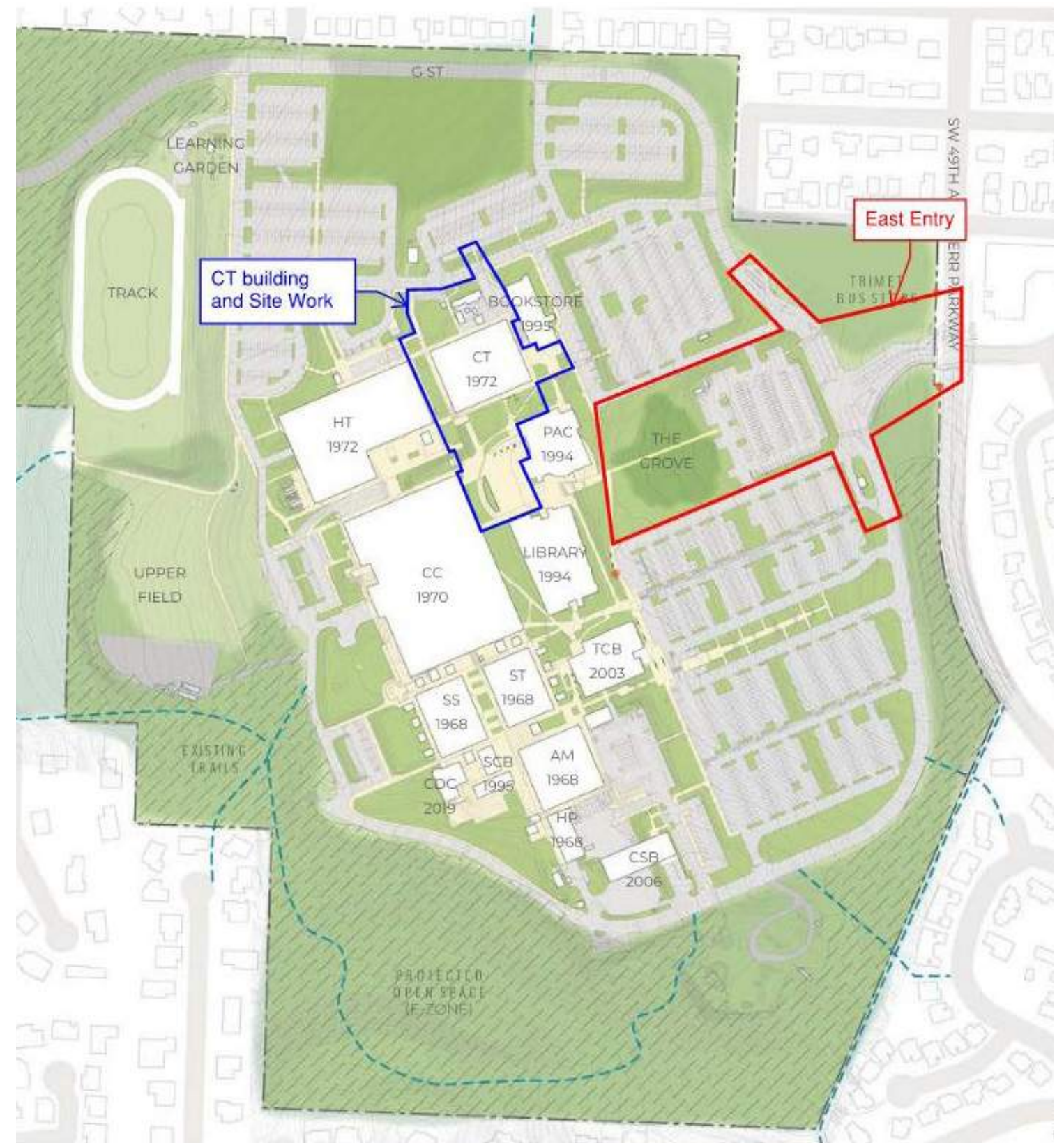
Project Scope Boundaries

CT AND CAMPUS CENTER

Improving access and identity with a focus on pedestrian connections from the central open space between the CC Building and the Library, as well as redevelopment of the PAC Plaza.

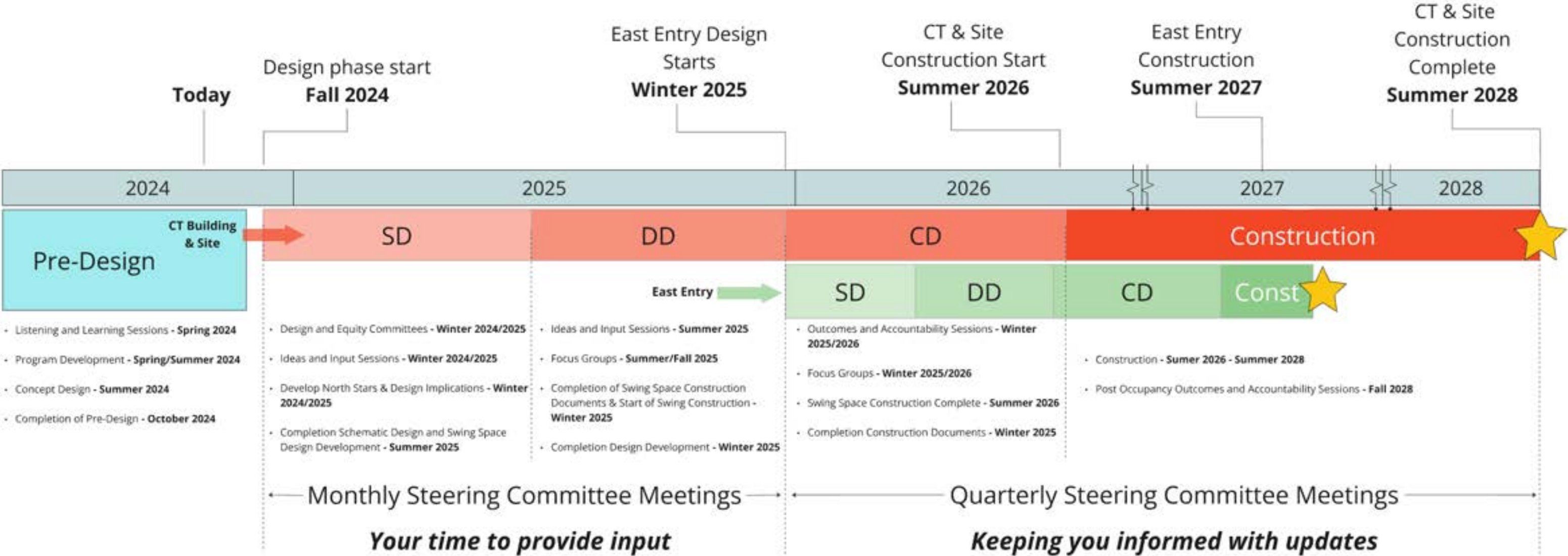
EAST ENTRY

Site improvements to the Sylvania Campus East Entry to create a welcoming entry that improves the safety, accessibility, and campus circulation.



Project Scope Boundary Map

Project Schedule



Engagement and Outreach

PROGRAM ENGAGEMENT: Focused on potential site uses, opportunities for activating outdoor spaces, and accessibility

- Meetings with faculty, PCC groups (such as maintenance, security, etc.)
- ABEC
- Resource Centers

COMMUNITY ENGAGEMENT: Focused on character and quality of spaces, potential site uses, accessibility and cultural representation

- Classroom engagement with students (coordinated through faculty)
- Student clubs and groups (potentially Native Nations Club)
- Art Displays

COMMITTEE ENGAGEMENT:

- Design & Equity Committee (DEC) to support making sense of feedback, reviewing proposed designs, providing feedback to design team and Steering Group

Concept Designs

CT Sitework

Existing Site



Site Photos



Site Photos



Site Photos



Site Photos



Site Photos



Site Photos

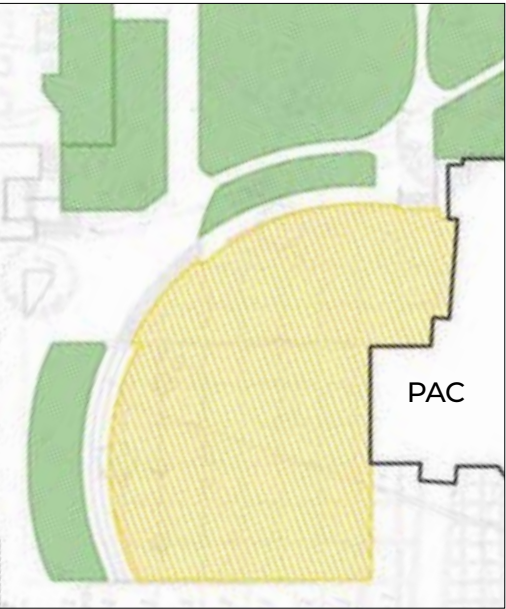
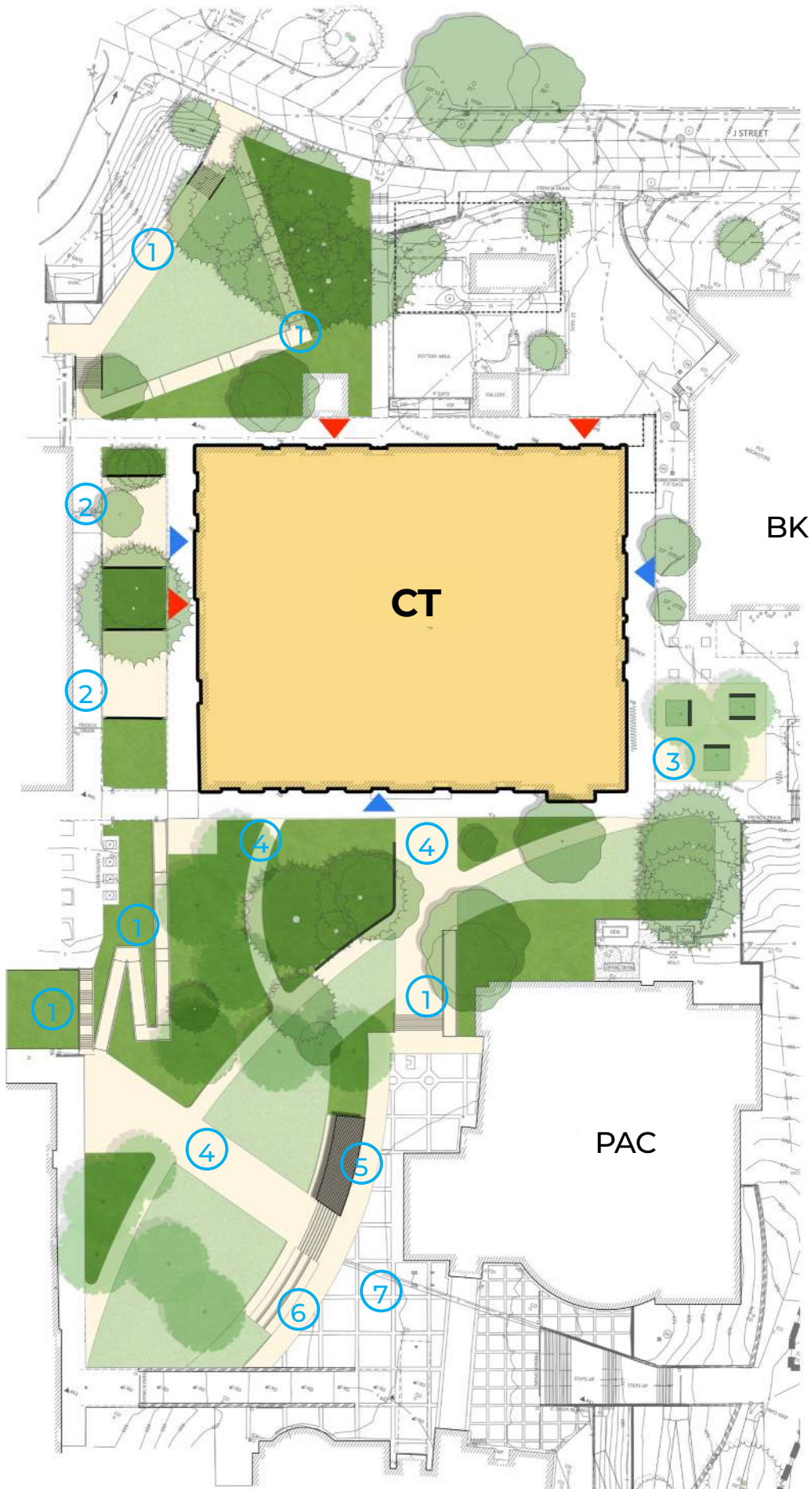


Concept 1:

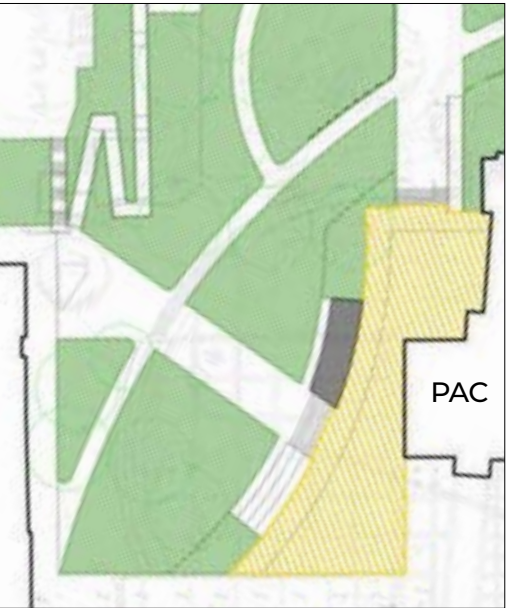
- 1 NEW ACCESSIBLE RAMP & STAIRWAY
- 2 CONCRETE STAIRS REMOVED
- 3 REMOVAL OF MECHANICAL SYSTEM & ADDED PLANTING AND SEATING
- 4 PEDESTRIAN WALKWAY CONNECTION
- 5 WISTERIA ARBOR WITH PORCH SWINGS
- 6 AMPHITHEATER STEPS
- 7 REDUCED PLAZA & ADDED SEATING

LEGEND

- 1st floor entry
- 2nd floor entry



EXISTING PAC PLAZA
 SIZE: 17,540 SF
 OCCUPANCY: 2,500



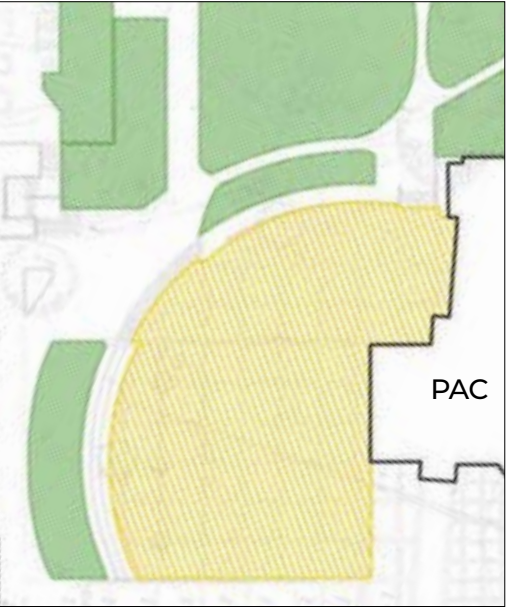
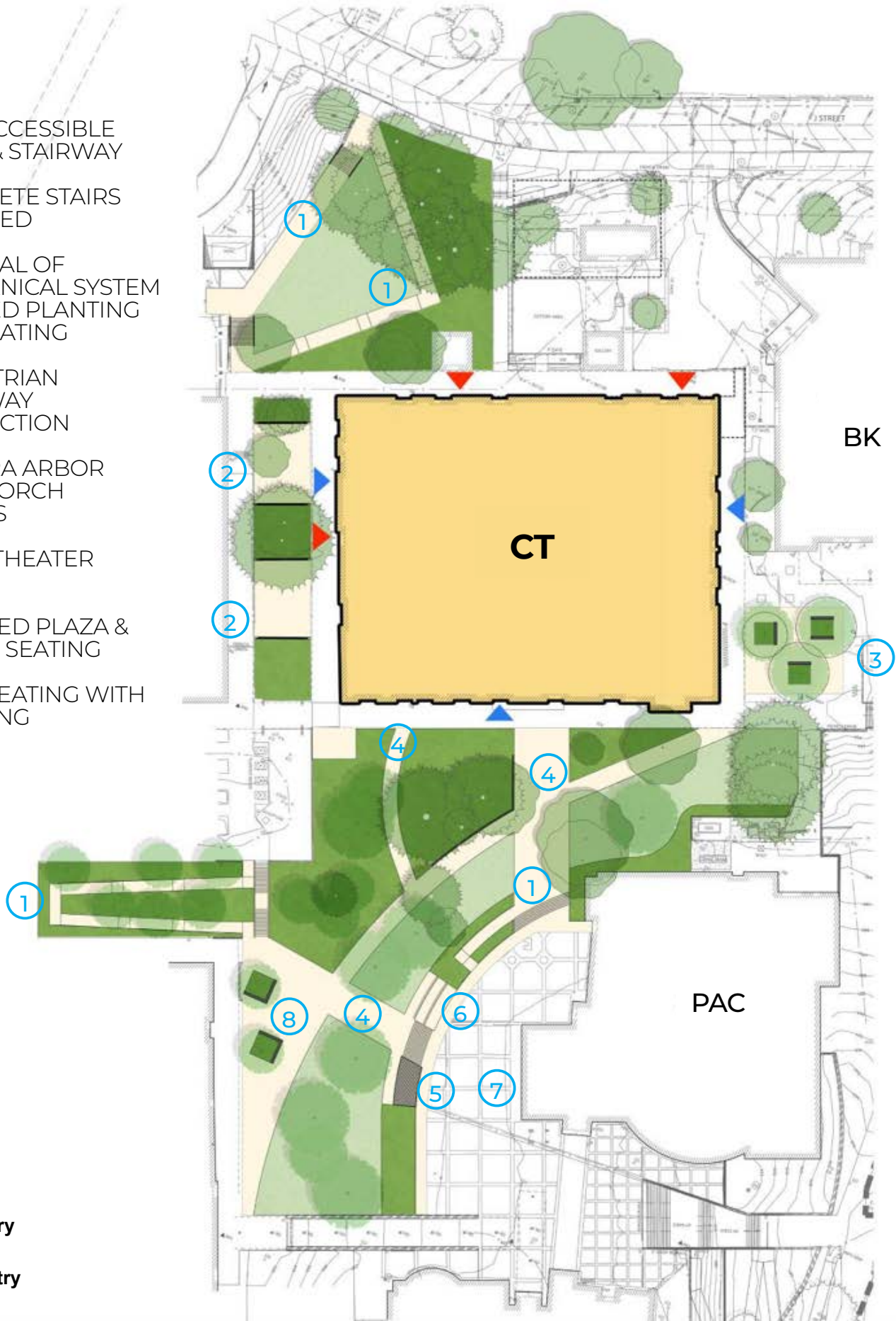
CONCEPT 1
 RESIZED PAC PLAZA: 7,220 SF
 OCCUPANCY: 1,200

Concept 2:

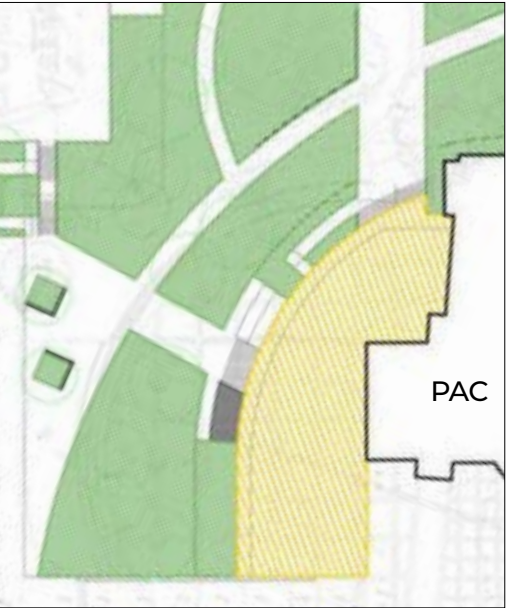
- 1 NEW ACCESSIBLE RAMP & STAIRWAY
- 2 CONCRETE STAIRS REMOVED
- 3 REMOVAL OF MECHANICAL SYSTEM & ADDED PLANTING AND SEATING
- 4 PEDESTRIAN WALKWAY CONNECTION
- 5 WISTERIA ARBOR WITH PORCH SWINGS
- 6 AMPHITHEATER STEPS
- 7 REDUCED PLAZA & ADDED SEATING
- 8 BACK SEATING WITH PLANTING

LEGEND

- 1st floor entry
- 2nd floor entry

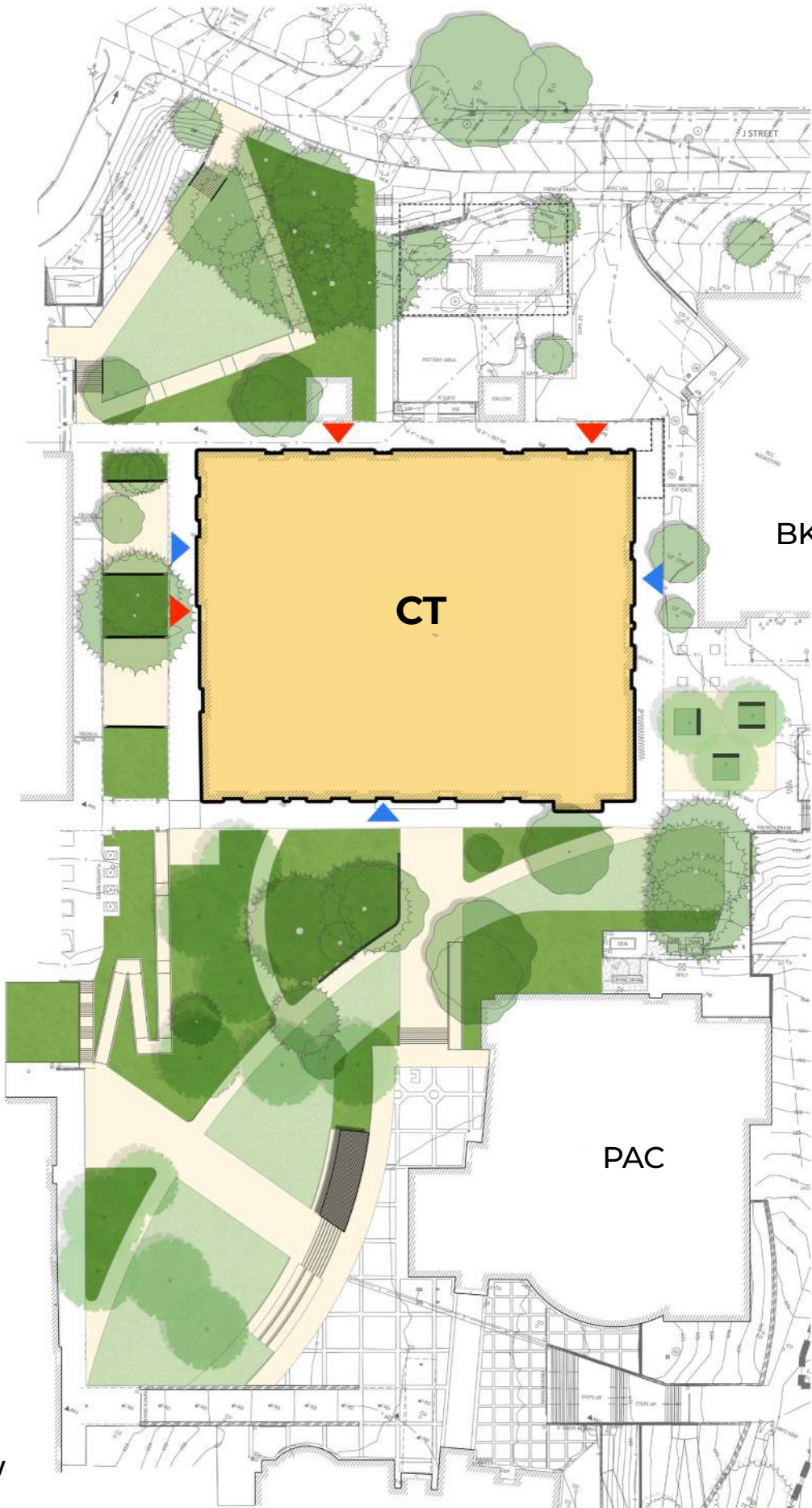


EXISTING PAC PLAZA
 SIZE: 17,540 SF
 OCCUPANCY: 2,500

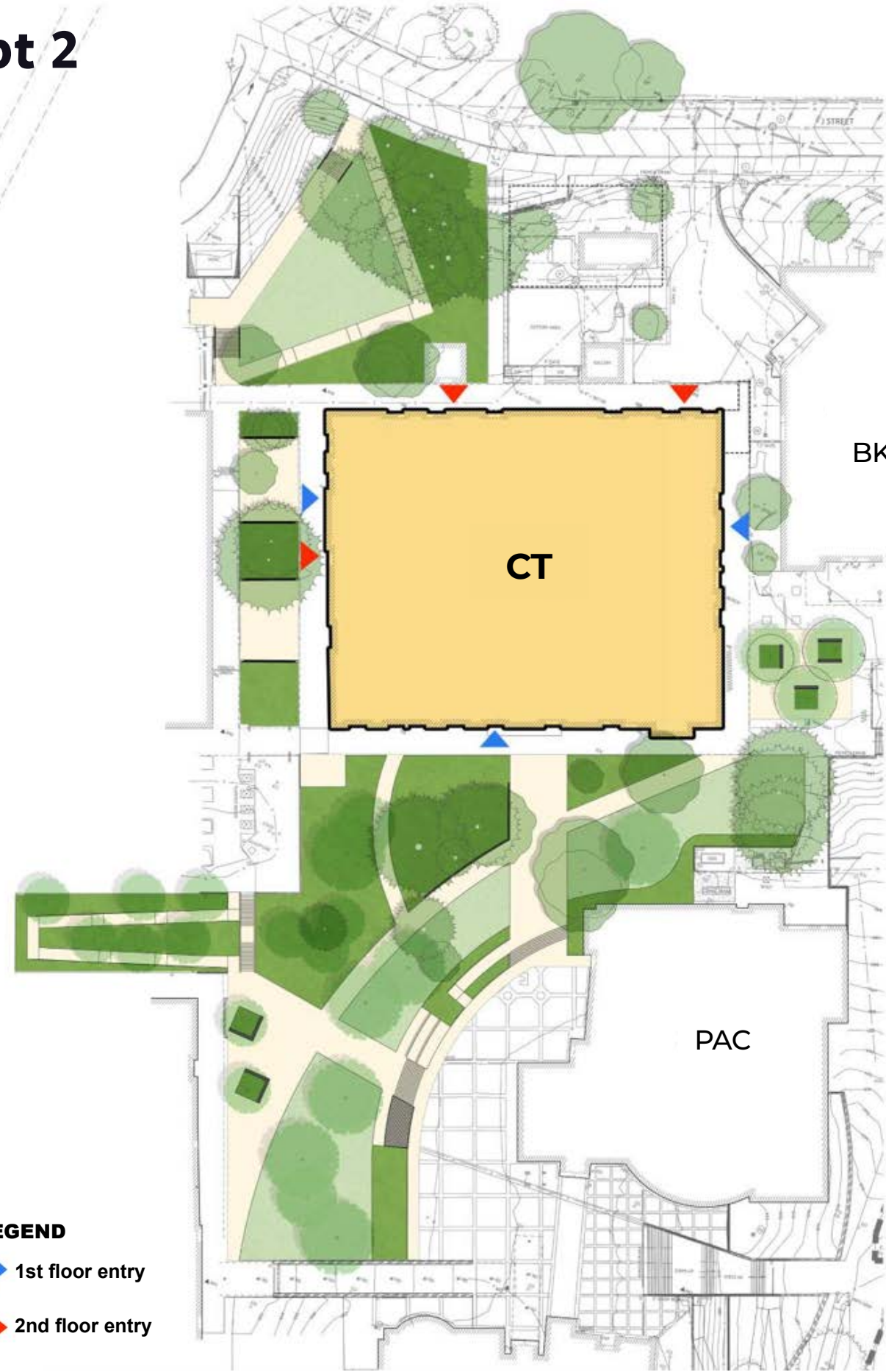


CONCEPT 2
 RESIZED PAC PLAZA: 8,800 SF
 OCCUPANCY: 1,260

Concept 1



Concept 2



East Entry

Existing Site



PCC Sylvania Entry Goals

- Create a welcoming entry that invites safe multi-modal circulation.
- Improve the functionality of the entry.
- Develop the entry as green gateway that celebrates the campus ecology.
- Support the PCC Climate Action Plan
- Improve campus identity.
- Connect pedestrians and bicyclists directly from 49th to the grove and the campus core.
- Accommodate a future parking management system.

Existing Site



Site Photos



Site Photos



Site Photos



Site Photos



Site Photos



Concept Overview - Existing Site



Concept Overview - Future



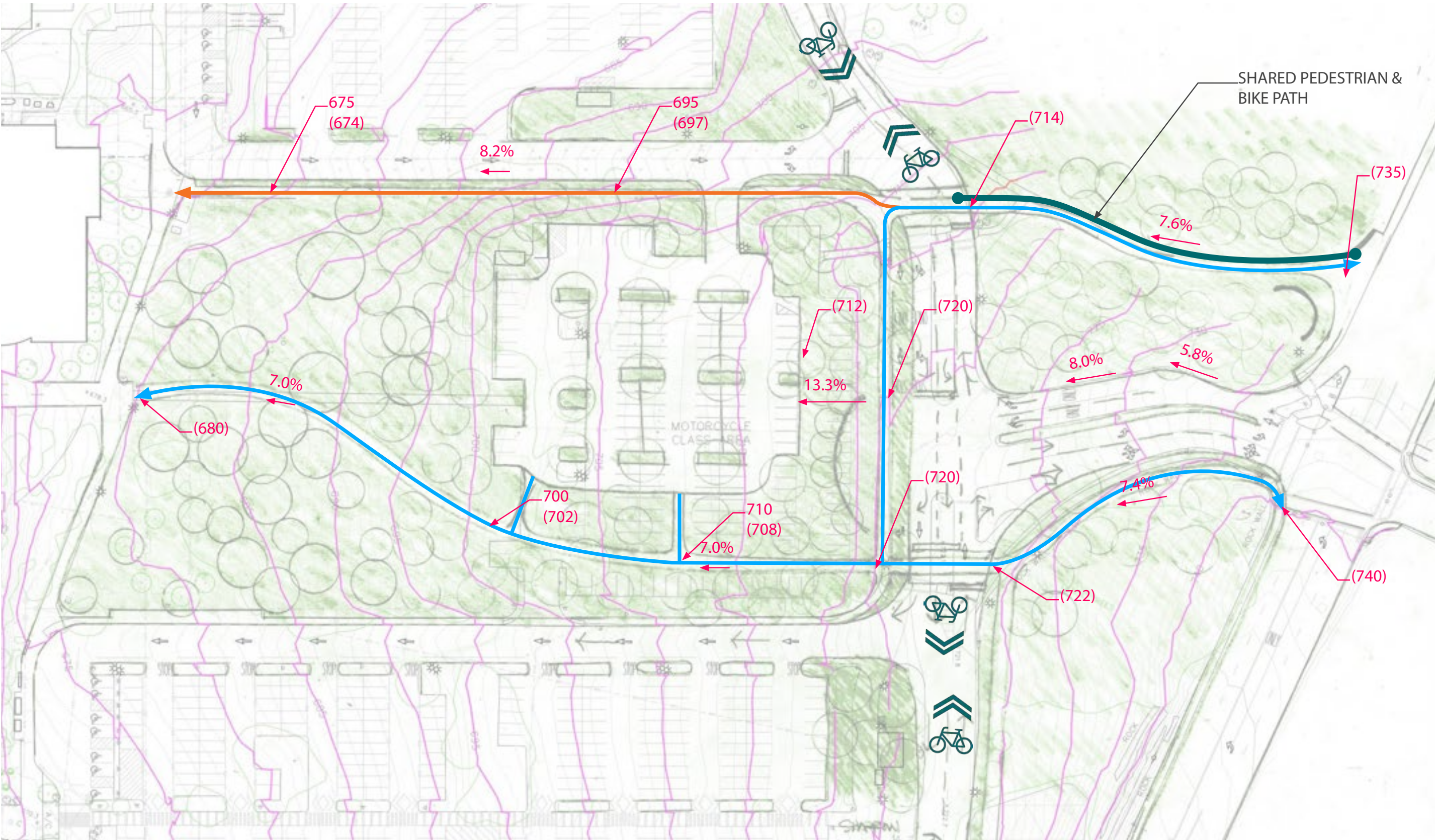
Concept Attributes

- Improved campus identity at 49th include new entry monument
- Improved pedestrian/bike route from 49th into campus north of intersection.
- Expanded planting from tree grove to campus entry.
- Direct accessible pedestrian routes from entry through tree grove to PAC
- Sharrows bike routes on campus roadways
- Replace ticket kiosks with digital system.

Concept 1: Lean Intersection



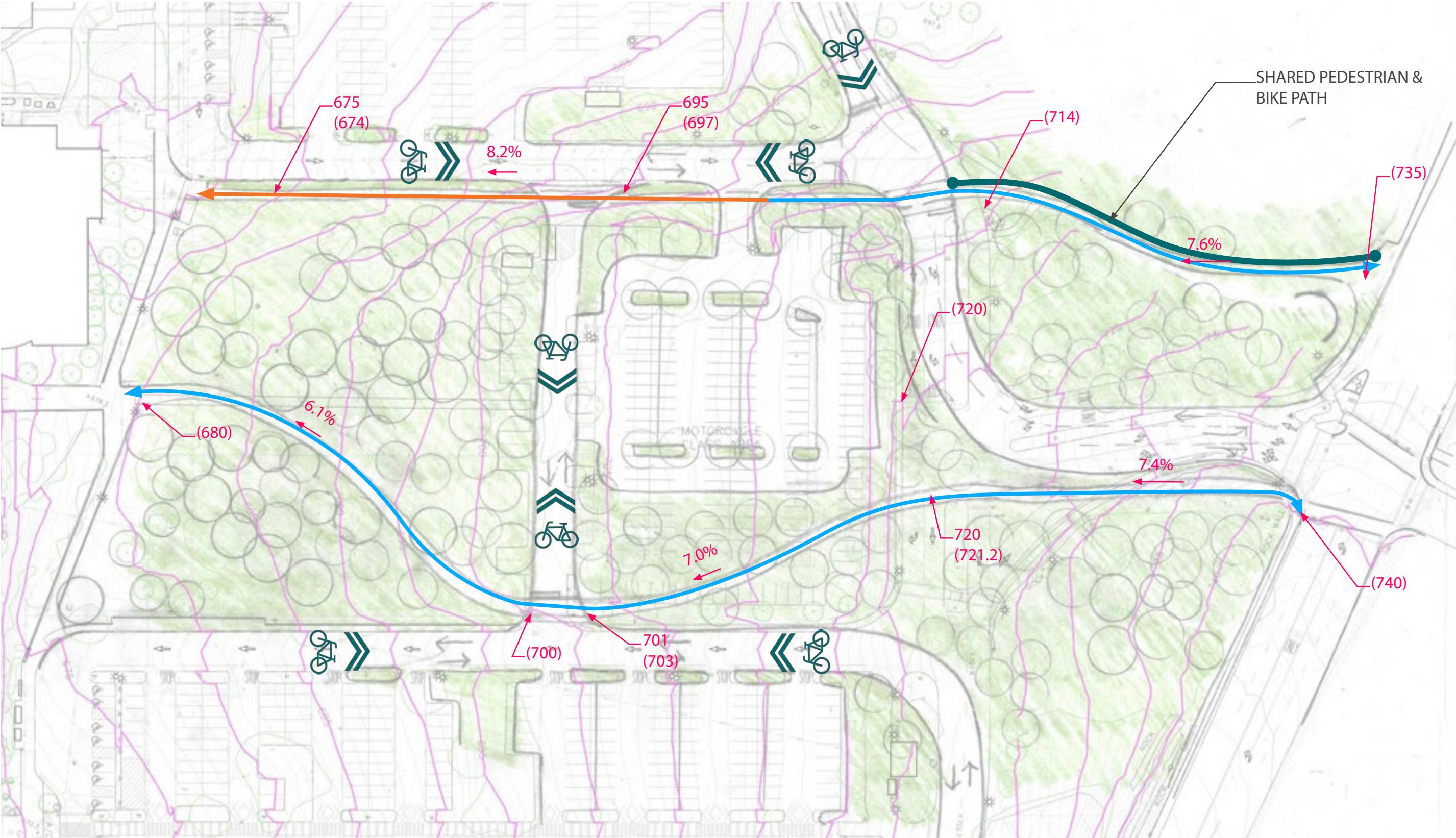
Concept 1: Lean Intersection



Concept 2: Circular Loop



Concept 2: Circular Loop



Concept 3: Roundabout



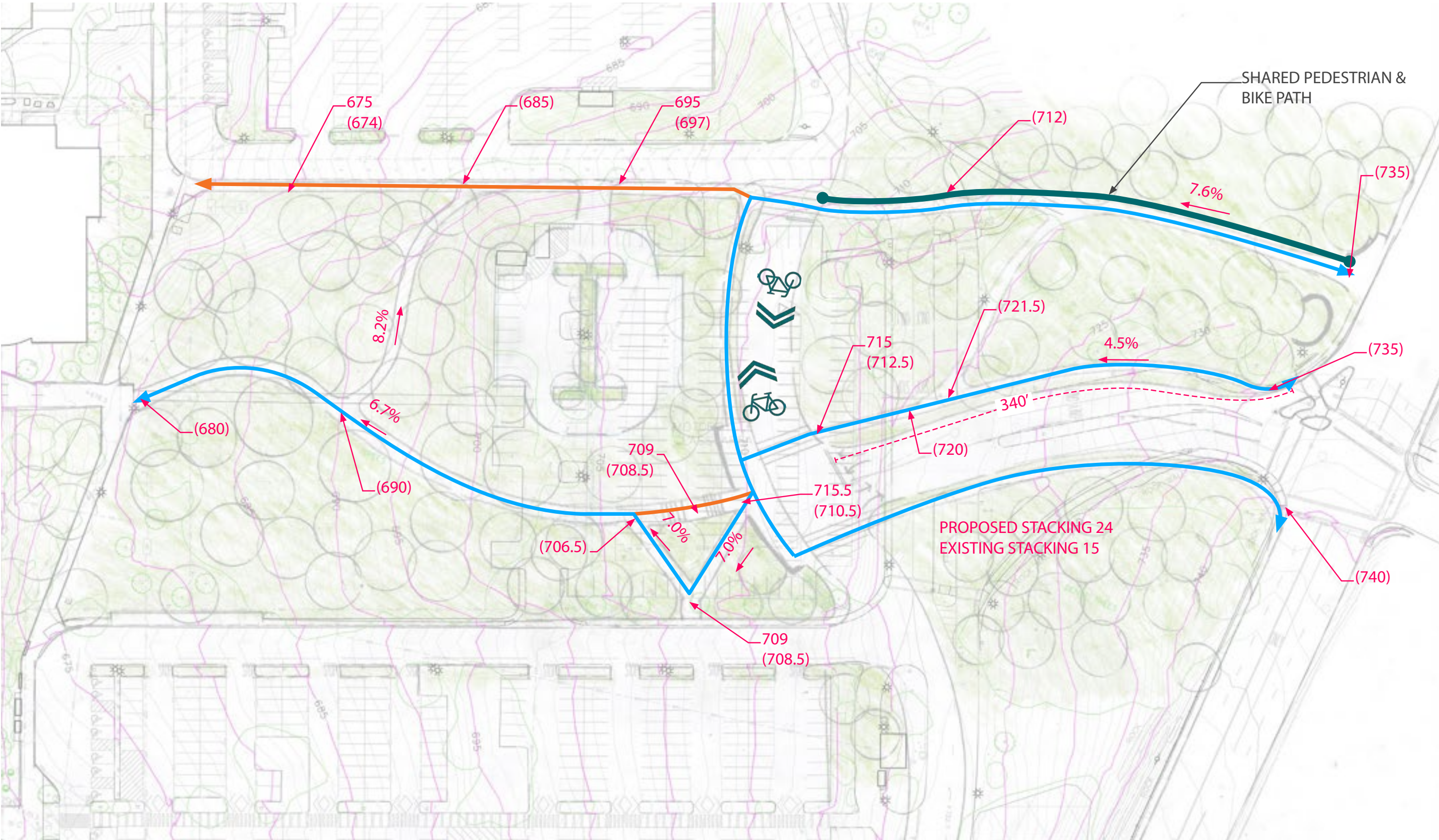
Concept 3: Roundabout



Concept 4: Added Stacking



Concept 4: Added Stacking



Concept Comparison



Lean Intersection



Circular Loop



Roundabout



Added Stacking

An aerial photograph of a school campus. The campus features several large, light-colored buildings with flat roofs, interspersed with green trees. A large, paved parking lot is visible in the center-left. To the right, there is a green athletic field with a blue track. The campus is surrounded by a dense forest of green trees. In the bottom left, a residential neighborhood with houses and trees is visible. A road runs diagonally across the bottom left. Overlaid on the center of the image is the word "Questions?" in a large, white, sans-serif font.

Questions?

Steering Committee meeting will occur November 8th.

Meeting agenda - To review project North Stars

Please reach out to **Tim Kremer** with any question or concerns
tim.kremer@pcc.edu