

The background of the slide features a low-angle shot of light-colored wooden beams, likely part of a roof or bridge structure, set against a bright blue sky with wispy white clouds. A dark blue horizontal banner is positioned across the middle of the image, containing the text in white.

# **BOND ADVISORY COMMITTEE FALL 2024**

# Agenda

- 2:00 Welcome
- 2:05 Charter Review
- 2:15 2022 Bond Projects
- 2:40 Workforce & Contracting Equity
- 2:45 2017 Bond Close Out
- 2:50 Questions
- 2:55 Good of the Order

A low-angle shot of several light-colored wooden beams, likely part of a roof or ceiling structure, converging towards the top of the frame. The background is a bright blue sky with soft, white clouds. A dark blue rectangular banner is positioned on the right side of the image, containing the text 'BAC Charter' in white.

# BAC Charter

# Bond Advisory Committee Charter

- The BAC is a recommending body established to inform and disseminate information about capital projects funded under general obligation bond measures.
- The BAC meets a minimum of twice yearly for 60-minute virtual meetings when members review progress on bond-funded projects.
- The BAC includes staff, faculty, and students who represent different areas of focus,
- P&CC will develop meeting agendas and presentations, convene and facilitate meetings, and make available presented materials on the P&CC website following each meeting. The committee is chaired by P&CC Director with support from the P&CC team.
- Open and constructive dialogue is sought to ensure that diverging opinions are discussed and documented. For the health of the committee, it is important that members be supportive of the committee and its recommendations. All members agree to act in good faith in all aspects of communication and deliberation.
- Meetings are open to the College.
- Members can send requests for information to the P&CC Director via email.



# 2022 Projects

# 2022 Bond Projects

Nearly 30 Active Projects

## Projects to Highlight

- SY Health Technology Building West
- SY Communications Technology Building
- SY East Entry
- SY College Center Roof
- SY 233 A/B Audio Refresh
- RC Building 2 Replacement
- RC Library Remodel
- RC ADA at Intersections
- Willow Creek Opportunity Center Tenant Improvements
- EV Transition Plan
- Space Utilization Survey

# Sylvania Health Technology West

## SY HT West - Project Schedule

Updated 10/2024 \*changes may occur during construction

ACADEMIC Calendar	2024							2025												2026			
	JUN	JUL	AUG	SEP	OCT	NOV	DEC	JAN	FEB	MAR	APR	MAY	JUN	JUL	AUG	SEP	OCT	NOV	DEC	JAN	FEB	MAR	
			SUM			FALL		WNT			SPR			SUM			FALL			WNT			
CONSTRUCTION		NO ACCESS to Construction Zones - liability of GC																					
PHASE 1 HT SOUTH (Natatorium)	move out	PHASE 1 - HT SOUTH - demolition and construction																					
PHASE 2 BASEMENT - LOCKER ROOMS						move out	Phase 2 - LOCKER ROOMS demolition and construction																
PHASE 3 GYMNASIUM											move out	short schedule	Phase 3 - GYM FULL CLOSURE			Late Start classes for Fall 2025							
																					P&CC	FIT OUT	PCC Move In

## Milestone Dates

- November 25 - Equipment Issue Office relocates to HT 126 & 127
- December 6 - Lockers must be cleared out
- December 13 - Locker rooms close until Spring 2026
- January 6 - Temporary changing rooms open

# Sylvania Health Technology West

Demolition = Progress + Patience



Removal of old HVAC



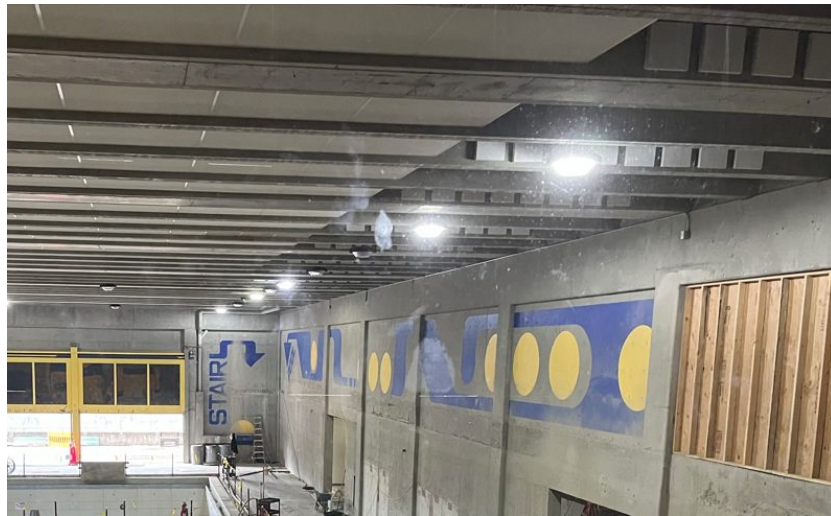
Rework plumbing



Salvaging building materials for reuse

# Sylvania Health Technology West

Progress



Current view looking west

Goal



Architect rendering

# Sylvania Health Technology West

## Ongoing Communication & Outreach

### Website



Planning and Capital Construction / Current projects / Sylvania Campus /

### Sylvania Health Technology (West) Renovation Project

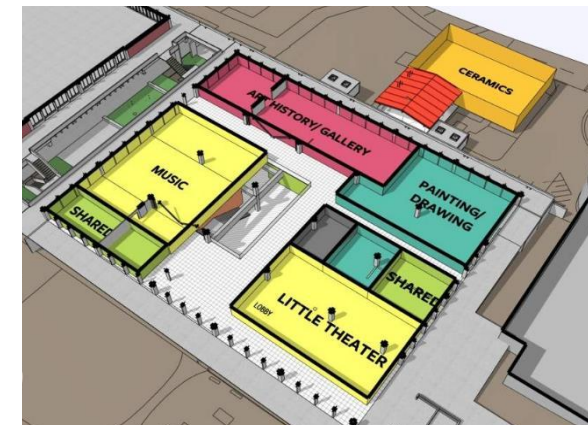
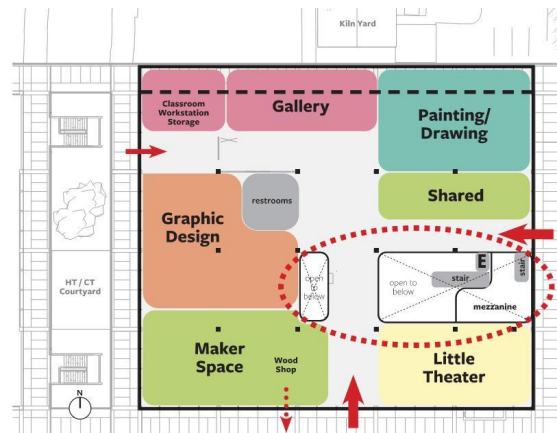
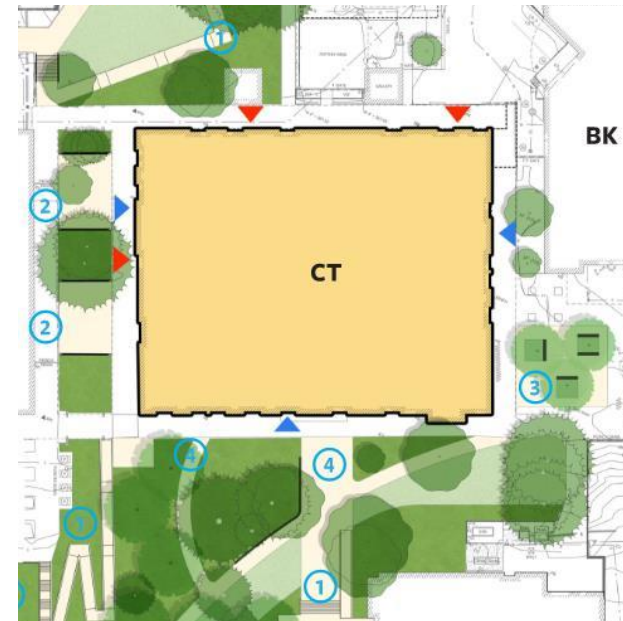


### Postcard



# Sylvania Communications Technology

- Full renovation of existing building to accommodate Visual & Performing Arts
- Languages, Communication Studies, Journalism, Writing, ASL, ITP, and ESOL will be permanently relocated to SS, TCB, HT, and CC
- Temporary and permanent relocations have been identified for all programs.
- Proposed concept designs being costed and reviewed for schedule implications. Final concept has not been selected at this time.
- Schematic Design Phase & further programming of spaces begins January 2025



# Sylvania East Entry Site Improvements

Redesign of the existing main entry to increase accessibility & circulation into campus, while also expanding opportunities for alternative transportation methods and improving safety



# Sylvania East Entry Site Improvements

- Site analysis and engagement with various stakeholders at the college is ongoing.
- Proposed concept designs are being costed and reviewed for schedule implications. A final concept has not been selected at this time.
- Estimated Completion: Fall 2026
- Schedule is dependent on concept selected by PCC and further developed of the design, based on future engagement.



# Sylvania College Center 233 A/B

## President's Conference Rooms Audio Visual Refresh

- 7 cameras with the ability to auto-switch camera shots based on input from ceiling microphones
- Brighter projectors
- Height-adjustable podium in 233B
- Permanent in-room PC for 233A with dedicated camera for remote/hybrid meetings
- System will be used for Board, Cabinet, and other high profile meetings as well as remote/hybrid meetings when the rooms are separated

# Rock Creek Building 2

## Project Overview

- Replace or renovate Building 2 with new CTE space and campus site improvements
- Total Project Budget: \$84M
- Design Team and Contractor selected
  - Bora/DAO/Curious Architects
  - Fortis/RJ Ramos/Berrien
- Design phase: January-July 2025
- Estimated construction start: Winter 2027



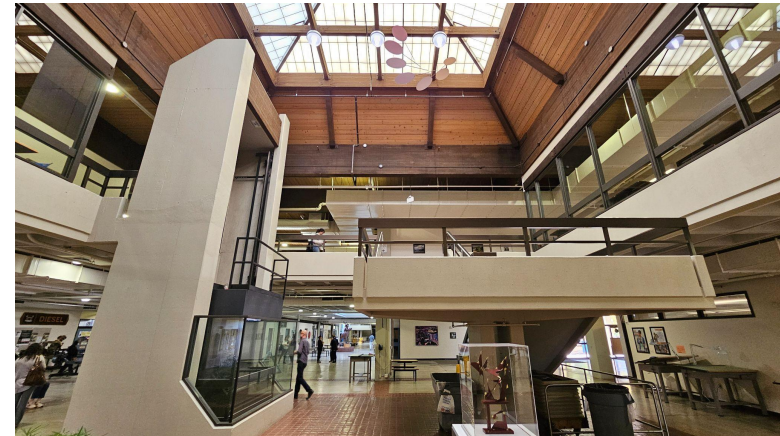
Rock Creek Campus Development Concept



# Rock Creek Building 2

## Current Activities

- Steering Committee formation
- Predesign proposals and contracts
- Future of industry surveys to inform what curriculum and programs PCC may offer
- Engagement planning
- Site and facility tours
- CRT-informed design training
- Resource Centers meet and greets



# Rock Creek Library Remodel

- 20,000 SF renovation of Building 9 existing Library space
- Renovation includes:
  - Varying sizes of study spaces for different study environments
  - New staff and support spaces
  - Incorporation of flexible zones such as “hum zones” (quiet conversations), collaborative, and family spaces
  - Cohesive Student Resource Center
  - New lighting, finishes and furniture
- Currently in construction
- Completion Spring 2025



# Rock Creek Intersection ADA Improvements

- Renovation of (3) intersections on campus to improve universal access and accessibility, while maintaining the colleges vision and facilities plan of an arrival experience on campus
- Project has 2 phases of construction
- Phase 1 is complete and currently in Phase 2
- Project completion set for January 2025

Raised speed table and  
focal point of campus



New curb cut



New sidewalk to  
Learning Garden



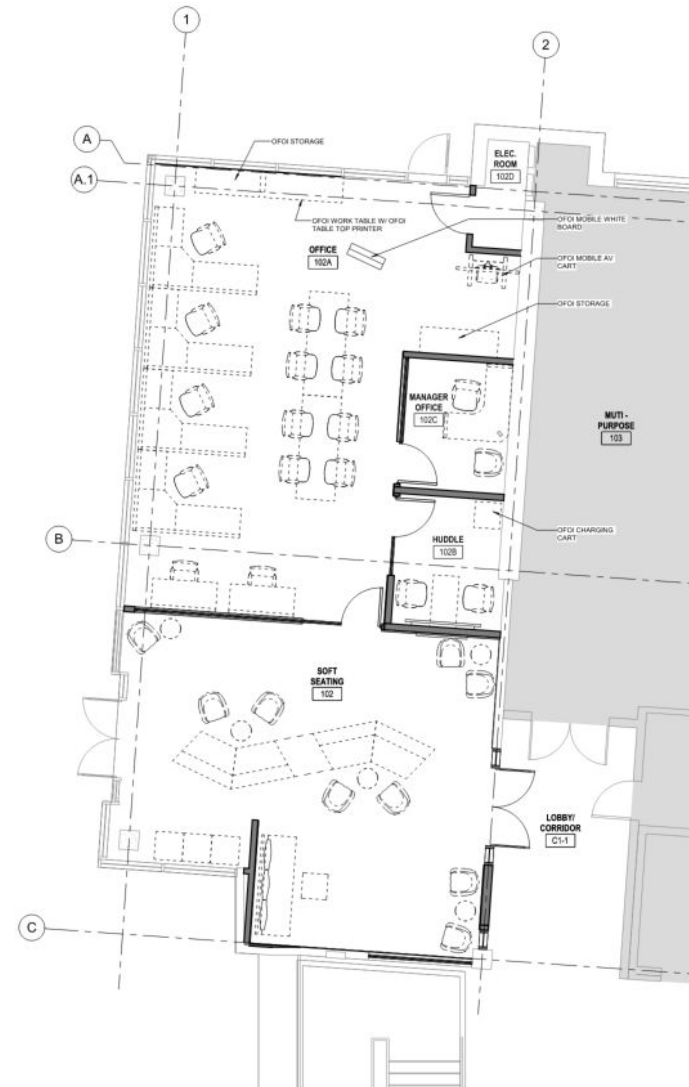
# Willow Creek Opportunity Center Tenant Improvements

- Convert former café space into a new College & Career Prep suite on the first floor. Complete in December 2024
- Build out a shell space into a new Artificial Intelligence (AI) Literacy Lab on the third floor. Complete in January 2025
- Update the building's electromagnetic door locks



# Willow Creek Opportunity Center College & Career Prep Suite

- The College & Career Prep suite will provide a soft seating area for visitors to explore classes and training programs offered by the College and an office suite for staff
- Features new storefront openings, a new ADA opener at the entrance, floor outlets to accommodate energized furniture, and digital signage



# Willow Creek Opportunity Center College & Career Prep Suite

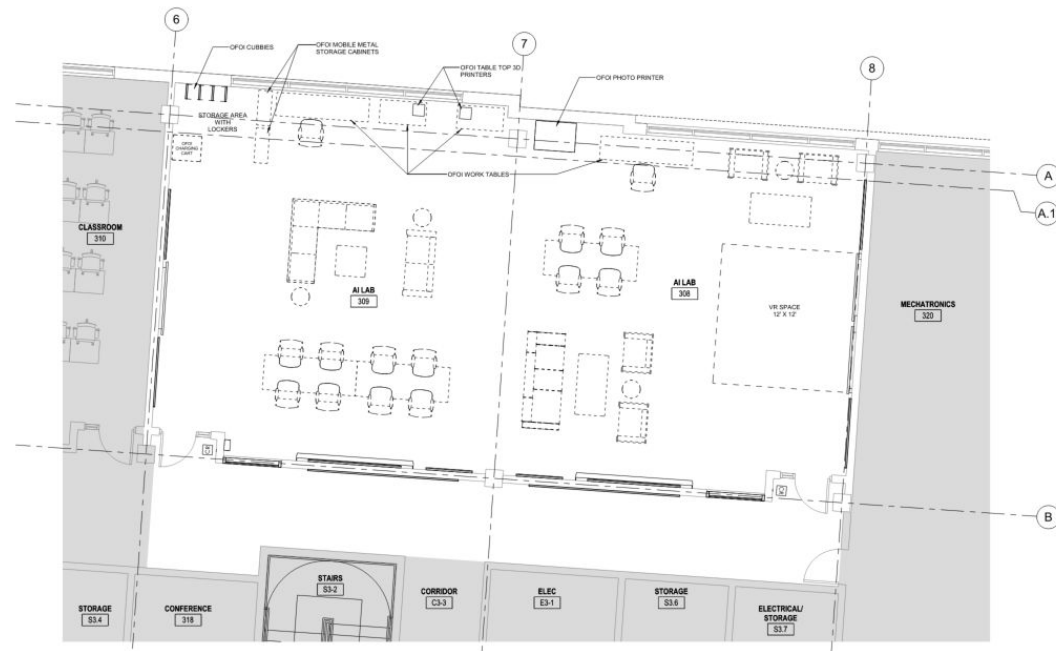


# Willow Creek Opportunity Center AI Literacy Lab

The AI Lab will provide a flexible development space for advanced technologies such as AI, VR, AR, projection mapping, spatial audio, and machine learning.

Features:

- Exposed concrete ceiling
- Busway power distribution with cord drops and plug-ins
- Steel pipe AV grid to support equipment and future growth
- A robust audio visual system including multiple presentation zones, multiple control panels, matrix switching, two audio zones, and a projection mapping and spatial audio area



# Willow Creek Opportunity Center AI Literacy Lab



# EV Transition Plan

PCC's Climate Action Plan identifies decarbonization as a major goal for the college.

The Electric Vehicle (EV) transition planning process is looking at both a strategy for PCC fleet transition as well as public facing charging infrastructure.

The EV Transition Plan is part of the college's commitment to climate justice and lasting environmental sustainability.

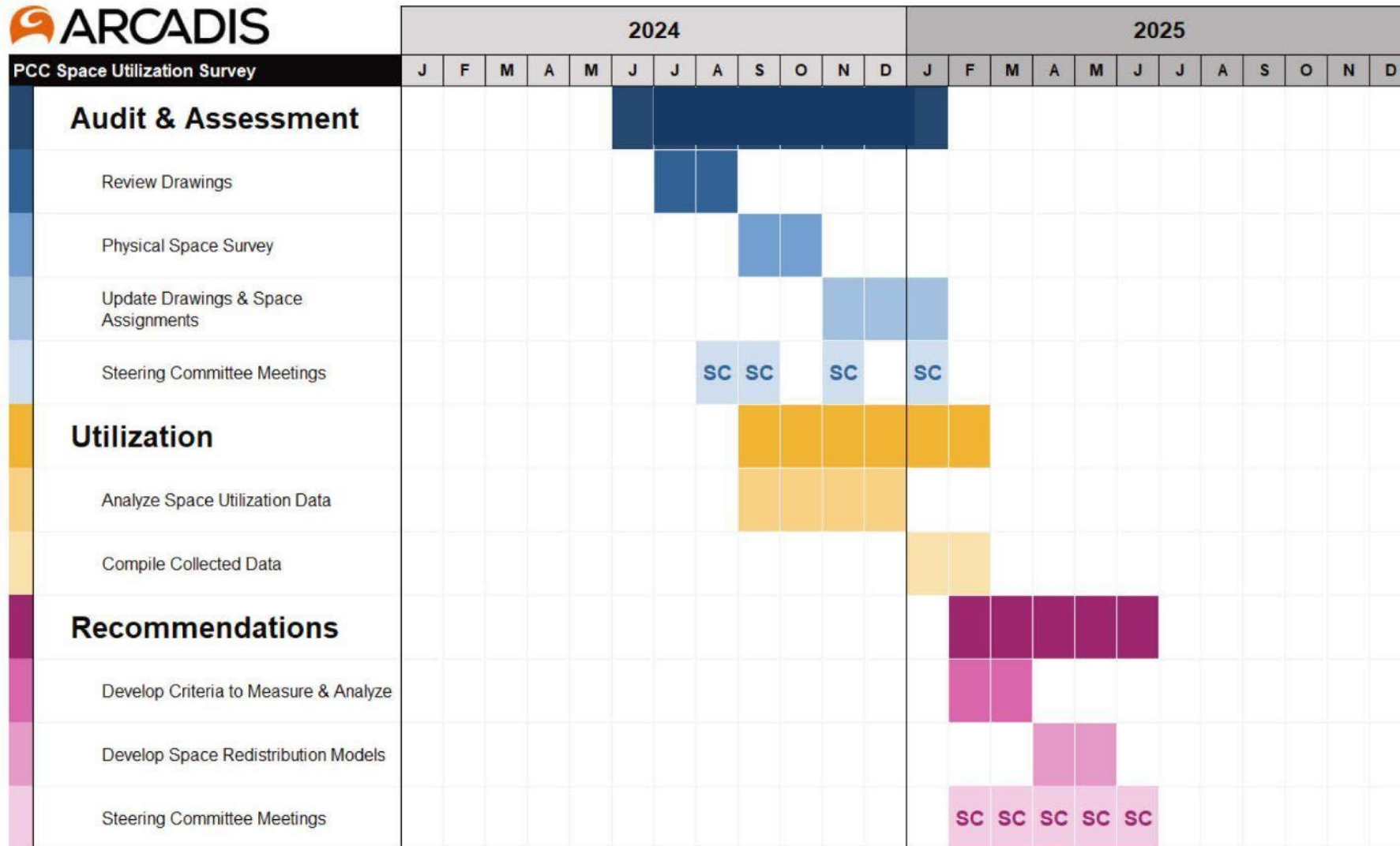


# Collegewide Space Audit

The college wide space audit is underway with the following work in process:

- **Audit** - Inventory and document a physical space of all college sites
- **Assessment** - evaluate the condition, quantity, and categorization of space types
- **Utilization** - Analyze the current use of space and evaluate the potential for other uses
- **Recommendations** - Develop best practices and governance strategies for implementation

# Collegewide Space Audit



A photograph of a wooden roof structure, showing several light-colored wooden beams and trusses. The structure is set against a bright blue sky with scattered white clouds. A dark blue horizontal banner is overlaid on the right side of the image, containing the text 'Workforce & Contracting Equity' in white.

# Workforce & Contracting Equity

# Workforce & Contracting Equity

- Piloting OHSU's Respectful Workplace Climate Scale on Rock Creek Bldg 2 project
- Strong equity projections on SY CT GMP
- Finalized a workforce agreement on the RC Bldg 2 project in partnership with labor and CBOs
- Engaged NAMC and PBDG as partners to maximize contracting equity processes and outcomes
- Workforce & Contracting [Dashboards](#) getting an update



# P&CC's Regional Leadership

- Participated on numerous panels and advisory committees on equity best practices including CREW, DBIA, Metro, IBR, OTW. Interviewed by DJC re: workforce. Featured in a Metro video discussing regional workforce equity outcomes.
- P&CC awarded the **Public Agency Excellence Award** by Business Diversity Institute. Awarded to an owner that “*excels in implementing policies to promote inclusive supplier diversity programs and actively breaks down barriers to inclusive contracting*”.
- Nominated for and voted in as Co-Chair of the Regional Collaborative Committee. The Collaborative oversees city-wide implementation of Regional Workforce Equity Agreements.



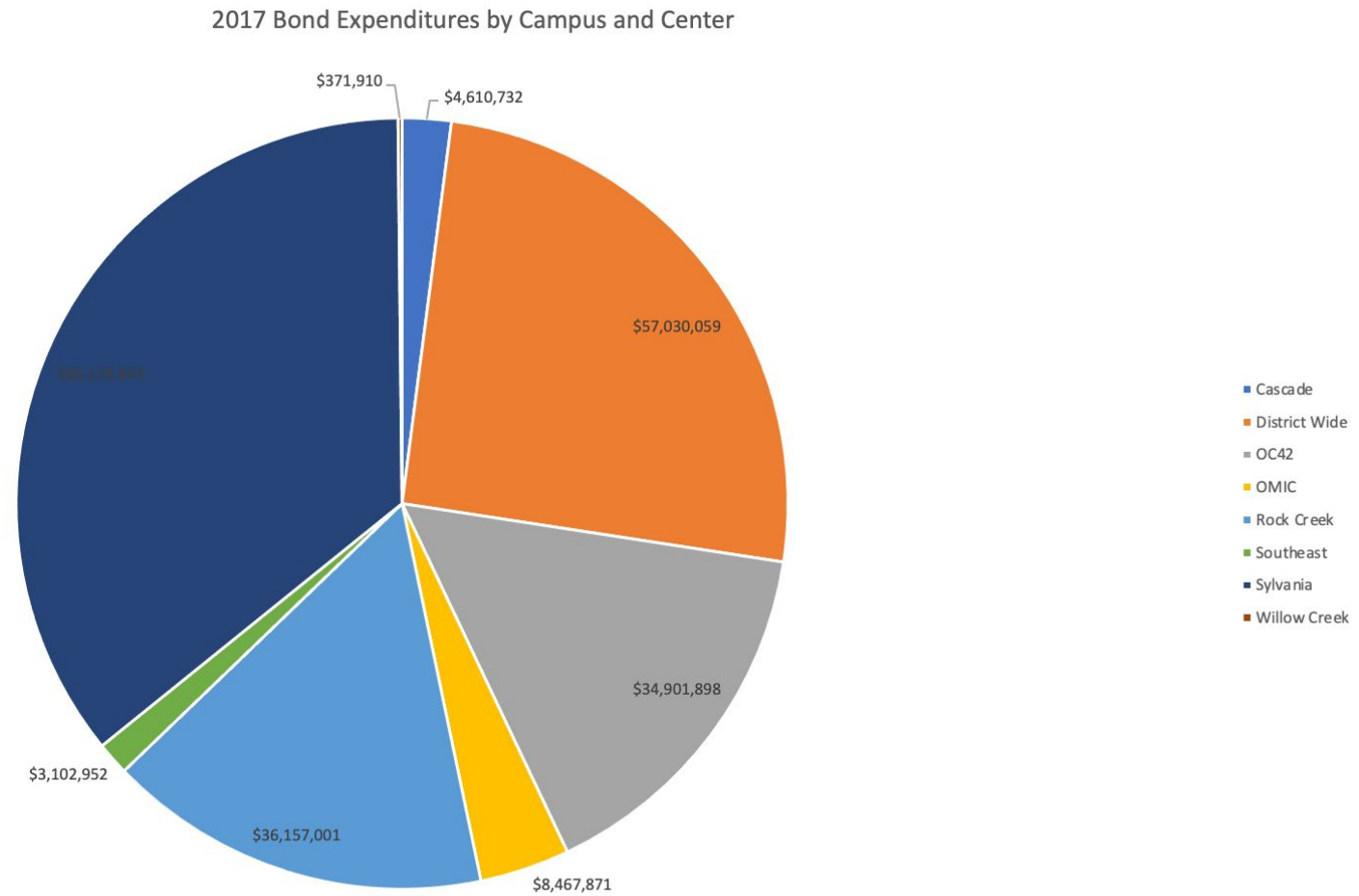
A photograph of a wooden roof structure, showing several light-colored wooden beams and planks. The structure is set against a bright blue sky with scattered white clouds. The perspective is looking up at the roof, creating a sense of height and openness.

# Finance & Procurement

# 2017 Bond Final Report

FUNDING SOURCES	
Bond Proceeds	\$ 184,244,393
Bond Premiums	\$ 24,763,142
State Support	\$ 8,000,000
Interest & Other Revenues	\$ 7,764,738
<b>Total Funds</b>	<b>\$ 224,772,273</b>

# 2017 Bond Expenditures by Location



# 2017 Bond Expenditures by Initiative

B01 Health Interprofessional Training	\$ 1,760,477
B02 OC42	\$ 33,901,898
B03 Sylvania Health Technology Building	\$ 68,174,860
B04 Casacde Public Safety Building	\$ 763,492
B05 Sylvania Site Improvement	\$ 1,540,963
B06 RC B9 Parking Lot	\$ 1,765,564
B07 RC Child Development Center	\$ 5,805,809
B08 Deferred Maintenance	\$ 29,372,424
B09 Safety & Security	\$ 7,051,249
B10 Information Technology	\$ 20,768,818
B11 Facilities Planning Phase 2	\$ 2,203,047
B12 Capital Equipment	\$ 4,886,205
B13 Owner Project Management	\$ 20,181,951
B16 Rock Creek Services Tech Building	\$ 8,342,749
B17 OMIC	\$ 8,467,871
B18 Property Acquisition	\$ 601,652
B19 RC Library	\$ 178,554

# 2017 Bond Expenditures by Initiative (cont'd)

B20 IT Space Needs	\$	2,130,880
B21 Sylvania Wayfinding	\$	1,388,019
B22 HT West Renovation	\$	2,337,994
B23 RC Campus Utility Survey	\$	46,683
B24 Sylvania SS GIS Lab Buildout	\$	220,515
B25 HT Pool Study	\$	161,254
B26 SE MT Tabor Study	\$	244,919
B29 CA MAHB Auditorium	\$	682,411
B30 Rock Creek Drafting Lab	\$	274,290
B31 OC 42 Multnomah County Health Clinic	\$	1,000,000
B33 Newberg Center	\$	9,250
B34 SE Parking Lot	\$	75,388
B35 Willow Creek AI Learning Laboratory	\$	371,910
B36 - SE Accessibility Hub	\$	61,176
	\$	224,772,273

# Use of Bond Funds

## IRS and State restricts the use of tax-exempt bond proceeds

- Must result in a capital asset (useful life over one year)
- Cannot be used for software unless College owns the product – does not apply to incidental use e.g. operating systems and software required for equipment. This is a limitation in the State Constitution and Oregon Statutes
- Cannot be used for “ordinary” repair and maintenance
- Cannot be used for salaries and operating expenses other than those required to manage the bond program
- Additionally, expenditures must comply with ballot measure language



**P&CC Team**

# Planning & Capital Construction Team

Abby Martin	Amy Hanson	Amy James Neel	Angela Alexander
AriAnne Lacambra	Casey Hagerman	Cherie Maas Anderson	CiCi Ross
Debra Jarcho	Dusty Hoerz	Gary Sutton	Isabel Gallegos
Jack Brosy	Jaime English	Janaya Bjornstrom	Jessie Lau
Jim Lasseter	Jody Giffin	John MacLean	Juanita Lognion
Julie YeagerWalker	Krystsina Paulava	Leanne Drake	Mark Seeley
Mary Kulikov	Megan Saari	Rachel Guerin	Richard Leslie
Sherry Durfey	Thalia Martinez	Tim Kremer	Tina Parkvold
Tracy Nguyen	Valerie Duback	Wendy Wright	

A low-angle shot looking up at a wooden roof structure. The wooden beams are light-colored with visible grain and knots. They form a triangular pattern against a bright blue sky with soft, white clouds. The perspective creates a sense of height and structure.

Questions?

# Questions

(Questions & Answers from today's BAC)

- ?
- ?
- ?
- ?

A photograph of a wooden roof structure, likely a pergola or a modern roof design, featuring several light-colored wooden beams. The beams are arranged in a geometric pattern, with some running vertically and others diagonally. The background is a bright blue sky with soft, white clouds. A dark blue rectangular banner is overlaid on the right side of the image, containing white text.

**Thanks! See you April 23rd**