

BOND ADVISORY COMMITTEE

FALL 2022



Planning & Capital
Construction

December 8, 2022

Agenda

- Welcome & Introductions
- 2022 Bond Projects
- Update on 2017 Projects
 - Capital Projects
 - IT/Safety & Security
 - Workforce & Contracting
 - Budget
- Discussion/Questions

2022 BOND PROJECTS

PORTLAND COMMUNITY COLLEGE
**2022 EDUCATION
BOND MEASURE**



Voters passed a \$450 million bond measure to fund capital improvements district-wide. The bonds will mature in about 16 years or less.

Bond Funding

- Major Capital Projects
- Deferred Maintenance
- IT Infrastructure
- Safety and Security
- Facilities Planning
- College Accreditation
- General Fund



Identified Projects

Alignment with Strategic Plan Initiatives

Project Goals

- Update technology and equipment to provide students with modern higher education and greater flexibility for hybrid learning
- Improve accessibility for people with disabilities
- Provide students with up-to-date job training spaces that can be adapted as industry needs evolve
- Enhance the health, safety and lifespan of facilities



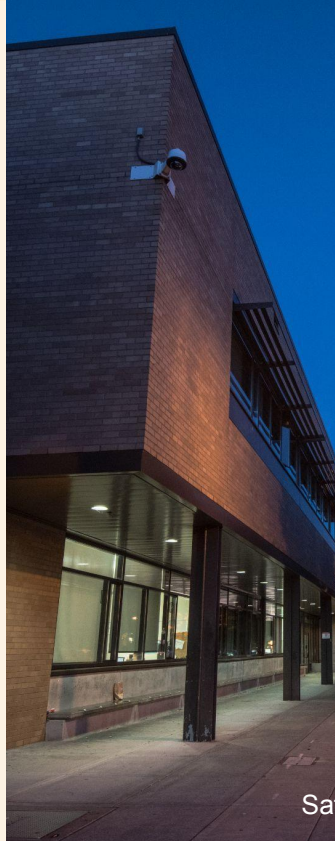
Modernize and Retrofit Existing Assets

- Replace Rock Creek Building 2 and add Career Technical Education facilities
- Renovate Sylvania Communications Technology Building
- Renovate Health Technology West
- Expand Career Technology in Washington County



Update Essential Building Functions

- Deferred maintenance and roof replacement
- Accessibility upgrades
- Information Technology infrastructure upgrades
- Safety and security upgrades



Roof replacement

Safety and security upgrades



Information Technology upgrades

Optimize Existing Resources

- Campus planning at both Cascade and Southeast
- College-wide space management
- Facility support of college reorganization



Minority, Women and Emerging Small Businesses

- Continue the goal of requiring 20% participation of COBID firms in contracted work
- Support workforce diversity
- Improve worksite culture



Public Equity and Workforce
Program



Contractor Equity
Dashboard

Contractor Workforce
Dashboard



Architect Equity
Dashboard

Architect Workforce
Dashboard

To learn more about PCC's commitment to workforce and equity please visit: [PCC Workforce and Contracting Equity Objectives](#)

Next Steps

- PCC Board to approval the sale of bonds
- \$225 million bond sale Spring 2023
- Staffing
- Developing project schedules and assembling project teams
- Revisit and refine project processes

PORTLAND COMMUNITY COLLEGE

2022 EDUCATION BOND MEASURE

Thank You!



CAPITAL PROJECTS

2017 Bond Projects



2017 Bond Projects Under Construction



HT Renovation
Summer 2023



Portland Metropolitan Workforce Training Center
Summer 2023

2017 Projects in Design or Preconstruction

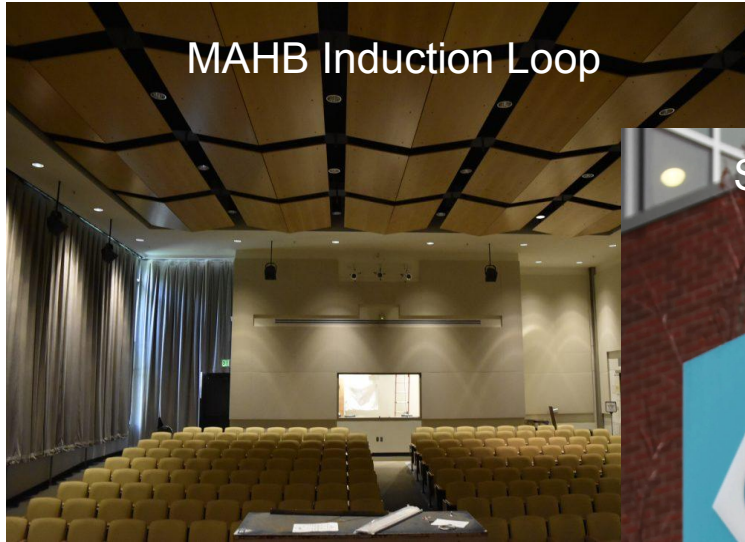
CA PSB Redevelopment



RC Barn Replacement



2017 Projects in Design or Preconstruction



Active 2017 Bond Projects

In Construction

- HT Renovation
- PMWTC
- RC B9 Roof Replacement

Designed/Preconstruction

- CC Roof Replacement
- MAHB Induction Loop
- DW Restrooms Upgrades
- RC Barn Replacement

In Design

- HT West Renovation
- DW IT Staff Relocations
- CA VRF Mechanical Replacement
- CA PSB Redevelopment
- SY Signage & Wayfinding Improvements

IT/SAFETY & SECURITY

Information Technology Projects

Network Optimization (Phase 2)

Replacement of local network switches,
currently 5-8 years old

- All Centers completed and a few campus buildings have been completed
- Project went on hold for 3 months when switch manufacture ended current model due to resource challenges
- Currently processing the return of existing equipment purchased and receiving quotes for updated switches



Information Technology Projects

Wireless Upgrades

Replacement of 800+ access points located across our district:

- Pilot processes working with Covendis for technical services and support with WAP installation
- 190 WAPs currently available for replacement
- Dependencies on new network switch installation
- Due to network switch procurement challenges, completion is now Fall 2023

Phase 3 (2024)

- Planning underway to enhance coverage areas, including outdoor locations
- Address high power demands from new access points



Information Technology Projects

Podium Upgrades

Disability Services Requests:

- Button/font color adjusted for legibility (based on feedback)
- Closed captioning button added to Blu-ray/DVD playback controls (remote to be left in the podium)
- Height adjustable tables
 - House PC monitor, keyboard, doc cam, touch panel, user HDMI input, and power outlet
 - Touch panel is within 24" reach standard

Podiums will be updated by 2023



Information Technology Projects

Conference Room & Classroom Standards Updates

- In collaboration with IT partners, *bring your own device* testing is underway. We are looking at multiple solutions for the ability to stream your own device to existing monitors in conference rooms
- For classrooms- we are working on a new standard hardware configuration as our standard control/switcher model has been discontinued
- We are collaborating with Media Services and other departments to help provide solutions for a flexible classroom

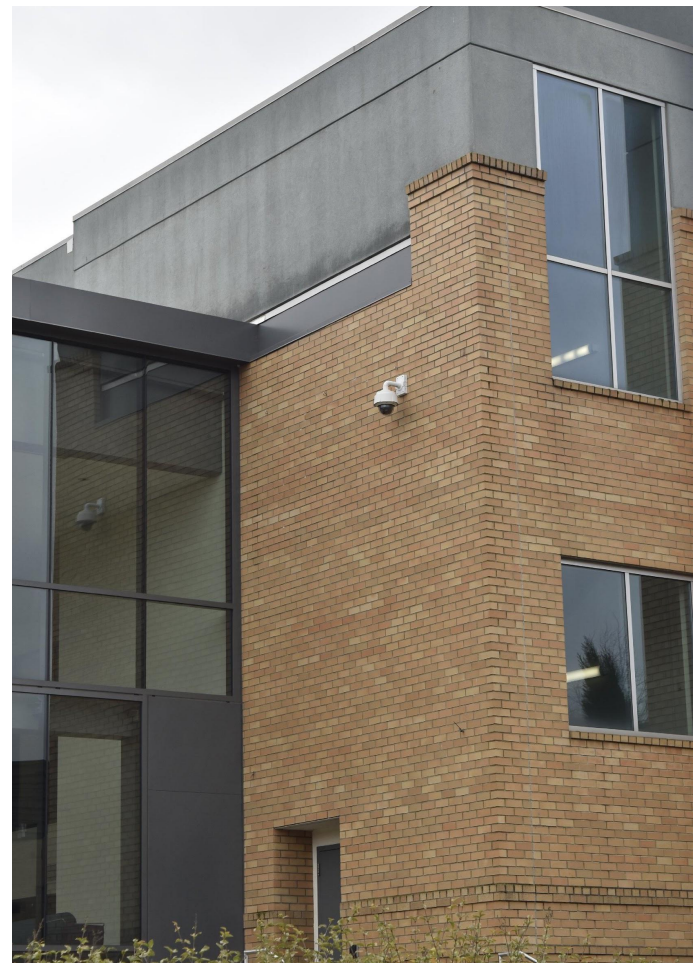


Public Safety Projects

Southeast Camera Replacement

Public Safety chose Southeast Campus for a pilot program to enhance public safety camera hardware and software.

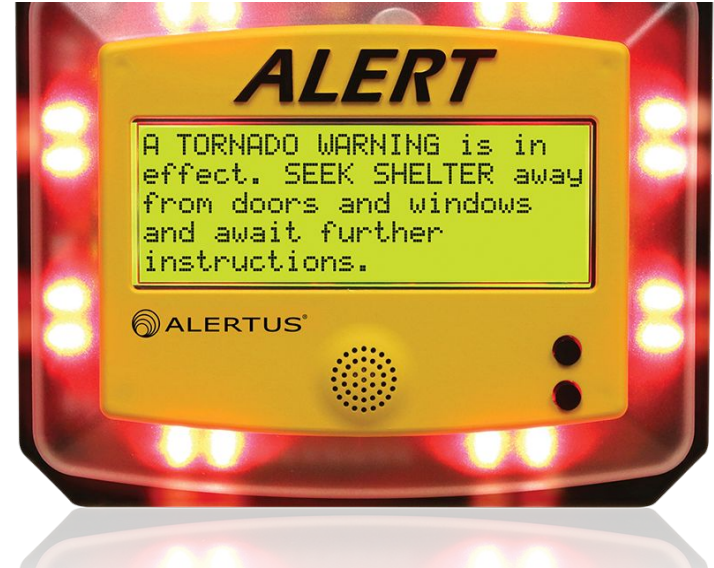
- Project underway now and is approximately 90% complete
- Included in this project:
 - Replacement of analog cameras with high definition IP (internet protocol) cameras
 - New camera network storage solutions and hardware leveraging Dells VXRail virtual hardware and EMC Isilon storage
 - Brief Cam Enhanced Analytics to help with Public Safety forensic research and real-time incident response



Public Safety Projects

Mass Notification Improvements

- Following successful pilot projects with equipment installations and testing at OMIC and CLIMB, PCC negotiated with Alertus to furnish mass notification equipment at Southeast, Cascade, Sylvania, and Rock Creek campuses
- Public bidding process for the project's installation phase was awarded to Cache Valley Electric
- Currently the team has completed Southeast and Cascade campuses and will be testing those locations in early January 2023
- Project to be completed by June 2023



WORKFORCE & CONTRACTING

Advancing Business & Workforce Diversity

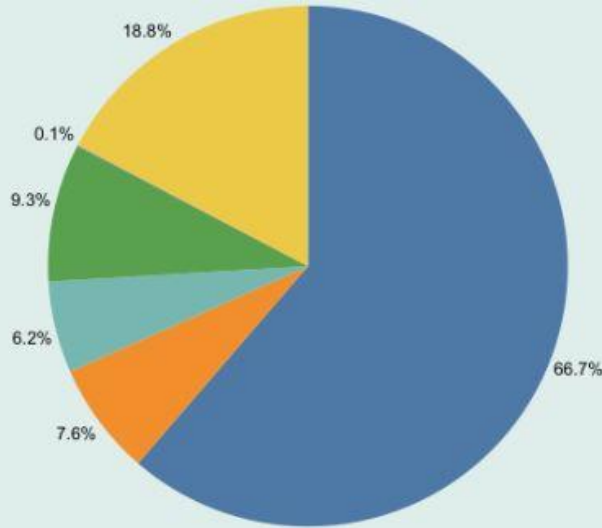
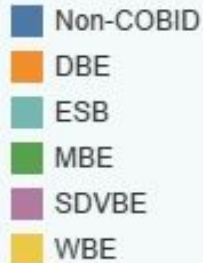
- Hiring a team member to focus intently on expanding certified contractor access and capacity-building
- Instituting disaggregated workforce and contracting equity objectives on new projects
- Hosting Two Contracting Outreach/Bond Info Events: Feb 14th/16th
- All of our workforce and contracting utilization stats are posted to our (4) public dashboards

<https://public.tableau.com/app/profile/bob.maczko/viz/PortlandCommunityCollegeLandingPage/PCCDashboardLandingPage>

COBID goal: 20%

COBID Participation

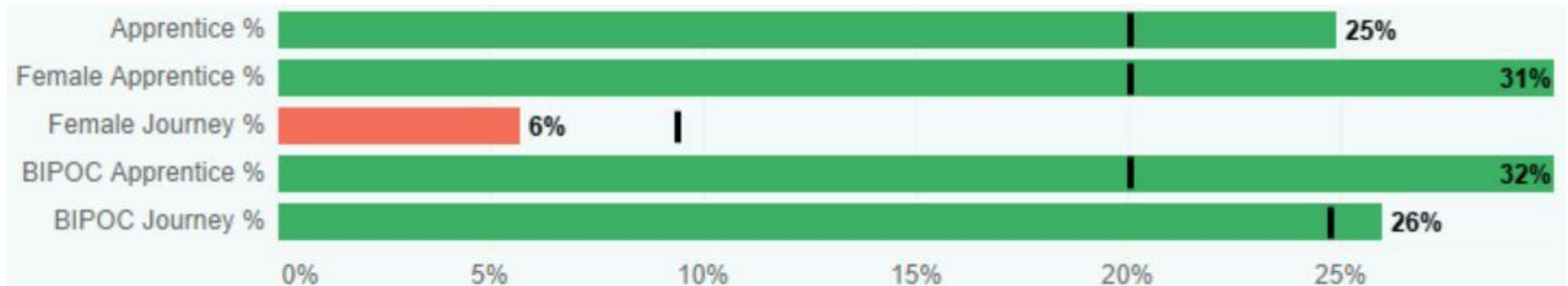
33.3%



P&CC is currently exceeding overall social equity objectives

Journeyworker women are a priority

Workforce Equity Snapshot Feb



Tradeswomen Build Nations 2022

Las Vegas, Nevada



Largest Gathering of Tradeswomen in History



2017 Bond Financial Report – 12/08/2022

FUNDING SOURCES	
Bond Proceeds	\$ 184,244,393
Bond Premium	\$ 24,763,649
State Support (HT & OMIC)	\$ 13,000,000
Interest & Other Revenues To Date	\$ 12,779,397
Total Funds Available	\$ 234,787,439

BY INITIATIVE	BUDGET	ACTUALS PAID	% SPENT
B1 - Health Interprofessional Training (Cascade Sim Lab)	\$ 1,890,000	\$ 1,818,954	96.24%
B2 - Metro Workforce Training Center	\$ 36,434,425	\$ 19,191,175	52.67%
B3 - Sylvania Health Technology Building (Included \$8M from State) includes all swing space work	\$ 75,349,270	\$ 52,076,537	69.11%
B4 - Public Satety Space Improvements	\$ 3,789,820	\$ 259,665	6.85%
B5 - Sylvania Site Improvement	\$ 2,000,902	\$ 593,209	29.65%
B6 - Rock Creek Improvements -Event Center Parking Lot	\$ 1,765,564	\$ 1,765,564	100.00%
B7 - Rock Creek CDC	\$ 5,827,029	\$ 5,743,411	98.57%
B8 - Deferred Maintenance	\$ 28,617,354	\$ 21,960,099	76.74%
B9 - Safety and Security	\$ 5,352,001	\$ 2,930,965	54.76%
B10 - Information Technology	\$ 20,740,179	\$ 18,017,287	86.87%
B11 - Facilities Planning Phase 2	\$ 2,500,000	\$ 2,188,460	87.54%
B12 - Capital Equipment	\$ 2,000,000	\$ 902,286	45.11%
B13 - Owner Program	\$ 18,737,429	\$ 14,461,385	77.18%
B14 - Escalation, Inflation, FF&E	\$ -	\$ -	0.00%
B15 - Contingency	\$ 3,803,253	\$ -	0.00%
B16 - Rock Creek Dealer Services Tech Building	\$ 8,556,114	\$ 8,426,581	98.49%
B17 - OMIC	\$ 8,150,000	\$ 7,603,551	93.30%
B18 - Property Acquisition	\$ 700,000	\$ 601,652	85.95%
B19 - Rock Creek Library	\$ 184,860	\$ 182,177	98.55%
B20 - IT Space Needs	\$ 2,000,000	\$ 120,406	6.02%
B21 - Sylvania Wayfinding	\$ 750,000	\$ 66,164	8.82%
B22 - HT Westside Design	\$ 1,749,105	\$ 340,458	19.46%
B23 - RC Campus Utility Survey	\$ 57,000	\$ 39,594	69.46%
B24 - Sylvania SS GIS Lab Buildout	\$ 222,153	\$ 222,153	100.00%
B25 - Sylvania HT Pool Study	\$ 161,254	\$ 161,254	100.00%
B26 - Mt Tabor Study	\$ 300,000	\$ 244,919	81.64%
B27 - Willow Creek Mechatronics	\$ 500,000	\$ 337,428	67.49%
B29- CA Campus Improvements	\$ 895,000	\$ 59,252	6.62%
B30 - RC Drafting Lab	\$ 345,000	\$ 238,308	69.07%
B31 - Multo Health Clinic	\$ 1,000,000	\$ 8,160	0.82%
B32 - Hillsboro	\$ 50,000	\$ 38,500	77.00%
B33 - Newberg	\$ 60,000	\$ 8,000	13.33%
B34 - SE Parking Lot	\$ 100,000	\$ -	0.00%
B35 - Willow Creek AI Learning Lab	\$ 129,727	\$ -	0.00%
B36 - SE Accessibilty Hub	\$ 70,000		0.00%
TOTAL BUDGET	\$ 234,787,439	\$ 160,607,554	68.41%

DISCUSSION/QUESTIONS

Resources

Planning & Capital Construction webpage

www.pcc.edu/bond

Facilities Plan Report

<https://www.pcc.edu/strategic-plan/where/facilities-planning/phase-2/>

P&CC Annual Report FY 2020-2021

https://www.pcc.edu/bond/wp-content/uploads/sites/57/2021/12/PCC-Annual-Report-FY-2020_2021_accessible_digital_opt.pdf

Planning & Capital Construction Public Equity and Workforce Program

<https://public.tableau.com/app/profile/bob.maczko/viz/PortlandCommunityCollegeLandingPage/PCCDashboardLandingPage>

THANK YOU

Next BAC: March 23, 2023