



PCC Sylvania – HT Renovation

MONTHLY REPORT – January 2022

01/14/2022

LEASE CRUTCHER
Lewis

Monthly Report – January 2022

1

SAFETY &
QUALITY

2

SCHEDULE &
PROGRESS

3

COMMUNICATION
NOTIFICATIONS

4

COVID &
WORKFORCE
TRAINING

1 - Safety

Highlights

- No changes to pedestrian and ADA accessibility routing from last month
- Major subcontractors working onsite:
 - Staton – Demolition
 - Pacific Foundation – Micropile
 - Weitman Excavation - Earthwork
 - Cherry City – Electrical
 - Total Mech – HVAC and Plumbing
 - Sawtooth – FRP
 - Lewis – Concrete / Shotcrete
- Good housekeeping with daily clean up and haul off debris



Guardrail at opening

1 - Safety

Highlights

- High risks / Noisy activities
 - Heavy Power Equipment
 - Saw cutting
 - Micro piling
 - Excavating
 - Material handling
 - Electrical
 - Fall



Tagged existing live power and utilities to avoid during demolition



Temp lighting in stair wells

1 - Quality

Highlights

- Relocate artwork @ South Courtyard
 - Documentation
 - Layout of existing anchor points
 - Evaluate existing structural integrity of the artwork
 - Temporary bracing of existing artwork for relocation and storage



1 - Quality

Highlights

- LEED
 - Separate concrete material from steel rebar for recycling
 - Salvage existing wood siding for reuse



1 - Quality

Highlights

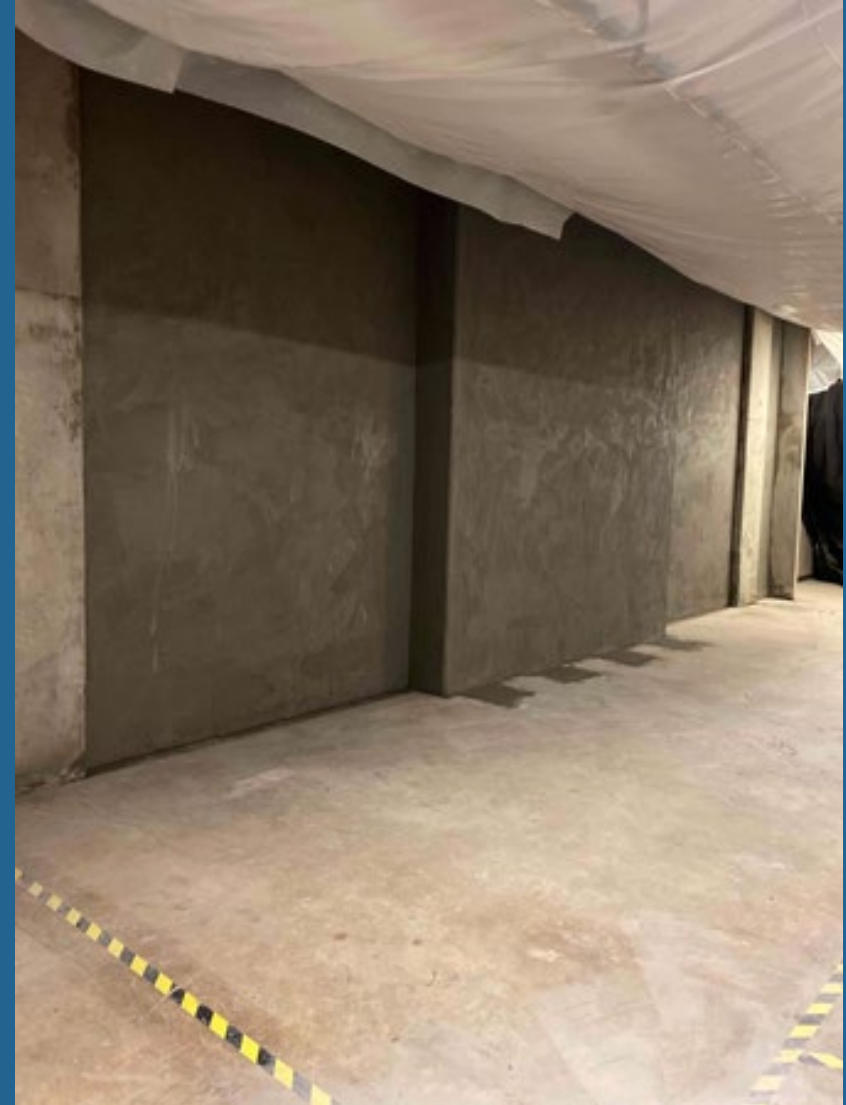
- Cast in Place Concrete @ Elevator Pit
 - Identified and solved the conflict of the underground power conduits within the pit.
 - Formed and placed concrete walls with a special waterproofing concrete mix design.
 - Eliminated the need of waterproofing due to constructability issue around existing grade beams



2 – Schedule & Progress

Highlights

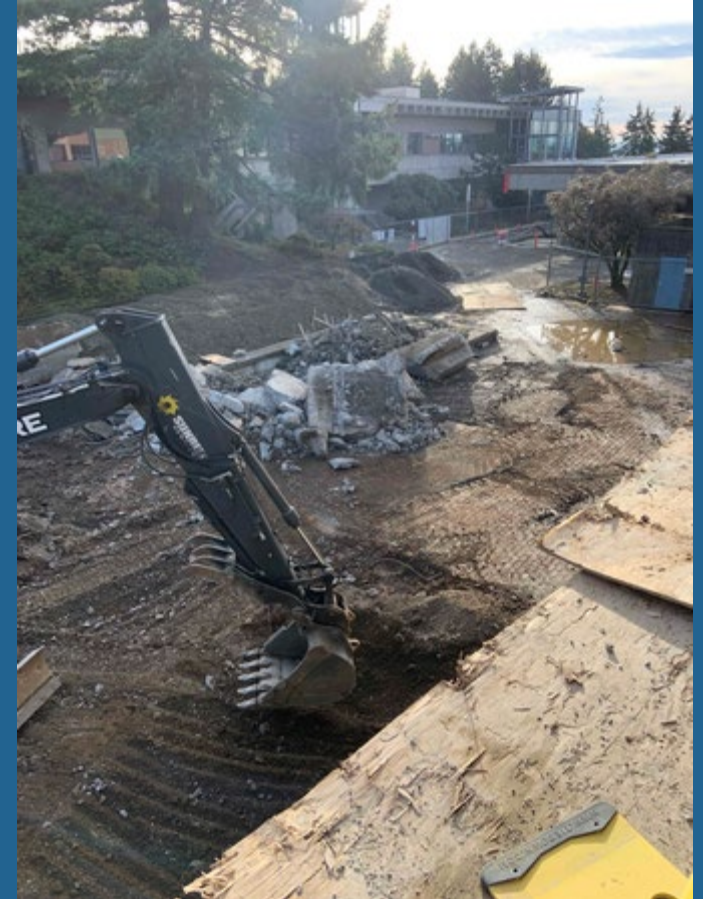
- Shotcrete @ Basement Shearwall
 - Completed



2 – Schedule & Progress

Highlights

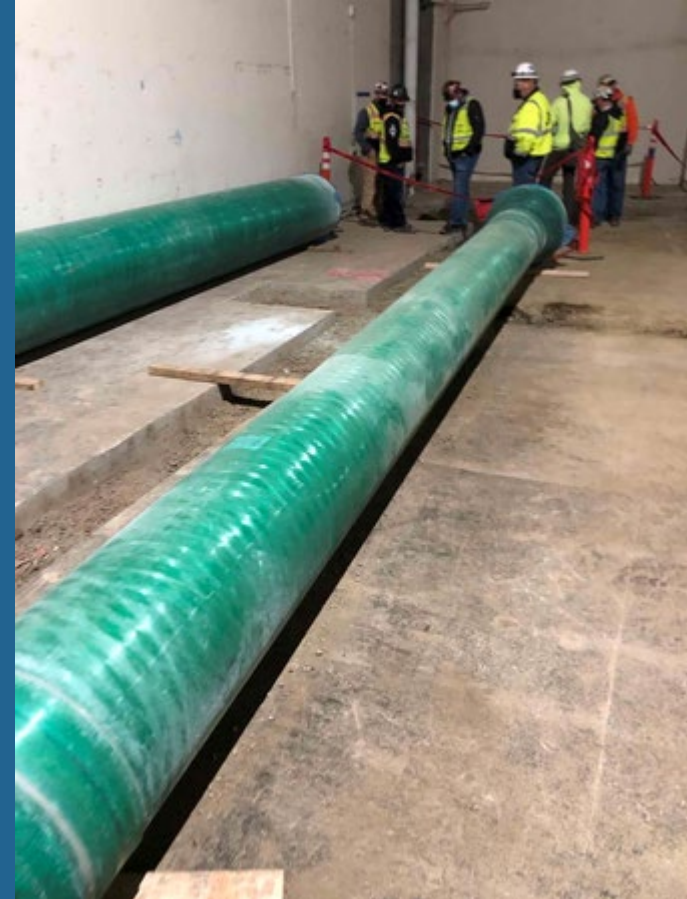
- Demolition of Restroom Tower @ South Courtyard
 - Completed over the Winter Break



2 – Schedule & Progress

Highlights

- Underground HVAC @ Room 118
 - Completed slab on grade sawcut and removal
 - Received underground HVAC piping material
 - Excavation and trenching are in progress



2 – Schedule & Progress

Highlights

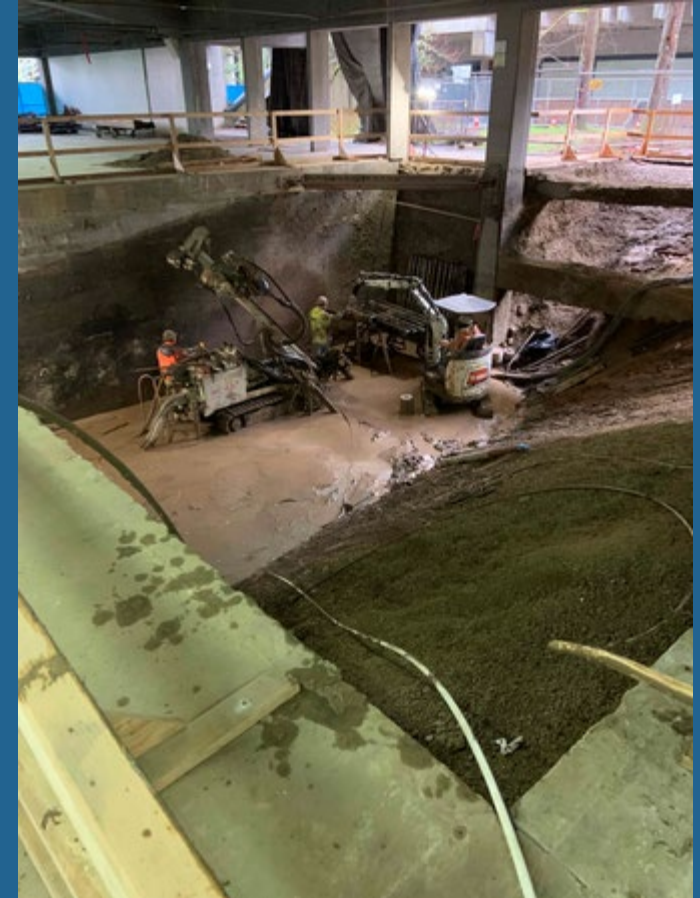
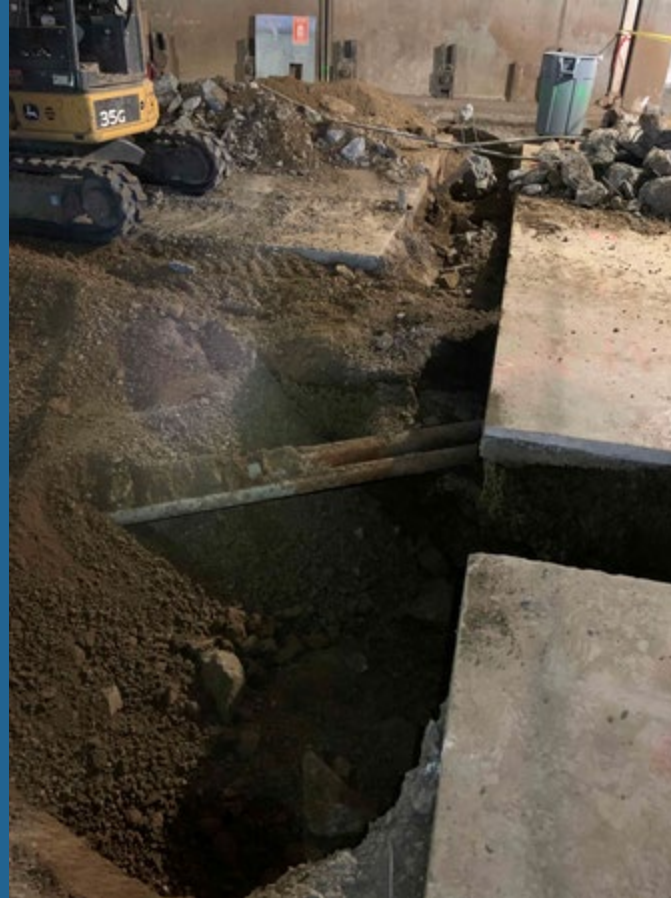
- FRP on 3rd and 2nd floors
 - Completed 3rd floor
 - On-going on 2nd floor



2 – Schedule & Progress

Highlights

- Underground Trenching and Micropiles
 - Identified underground live power conduits in the micropiling areas
 - Developed a work-around plan to minimize cost and schedule impacts
 - Micropiling – in progress



2 - Schedule & Progress

Highlights

- Upcoming new Major Activities
 - West side exterior ADA ramp
 - Structural steel
- Material Procurement Concerns
 - The metal deck was ordered and didn't see escalation impact on this order. No new updates on structural steel cost.
 - Roofing material will have cost escalation which we expected and have budgeted in the GMP
 - No escalation impact on the AHU order
 - Lighting material will have cost escalation



3 - Communication Notification

Highlights

- Disruption Notification
 - Loud noise activities from micropile on going to end of February
 - Micropile will be in Room 118 (adjacent to Medical Imaging room below) in the first week of Feb.
 - Temp heater installed in chiller room
 - Heat trace installed on exposed fire sprinkler and chiller piping
- Upcoming Logistics Changes
 - The All User Restroom (south on Level 2) is being used.
 - The exterior west ADA ramp (phase 1) will open in April 2022.
 - The south pedestrian accessible routing will open in April 2022

4 - COBID & Workforce Training

Highlights

- Workforce Report
 - December Report from City of Portland
 - Minorities (%) : 19.25%
 - Women (%) : 8.29%.
 - Apprentice (%) : 20.59%
- COBID
 - COBID % projecting for HT based on bid values
 - \$13.8 mil or 25% (goal is 20%)
 - MBE: \$513,000 (1%)
 - WBE: \$8.52 mil (15%)
 - ESB: \$4.78 mil (8%)