



PCC Sylvania – HT Renovation

MONTHLY REPORT – December 2021

12/09/21

LEASE CRUTCHER
Lewis

Monthly Report – December 2021

1

SAFETY &
QUALITY

2

SCHEDULE &
PROGRESS

3

COMMUNICATION
NOTIFICATIONS

4

COVID &
WORKFORCE
TRAINING

1 - Safety

Highlights

- OSHA consultation meeting on 12/14/21
- No changes to pedestrian and ADA accessibility routing from last month
- Major subcontractors working onsite:
 - Staton – Demolition
 - Pacific Foundation – Micropile
 - Weitman Excavation - Earthwork
 - Cherry City – Electrical
 - Total Mech – HVAC and Plumbing
- Installed guardrails at all openings
- Installed temp lighting at all spaces
- Good housekeep with daily clean up and haul off debris



Guardrail at opening

1 - Safety

Highlights

- High risks / Noisy activities
 - Heavy Power Equipment
 - Saw cutting
 - Micro piling
 - Excavating
 - Material handling
 - Electrical
 - Fall
- Planning for an onsite consultation meeting with OHSA in Nov. LCL will notify P&CC once we have a firm schedule with OHSA.



Site fencing @ North Entry

1 - Quality

Highlights

- Micropile @ Basement
 - Utilized small but powerful equipment to drill 4 each of 8" diameter micropiles in the basement room.
 - Avoided any damages to existing finishes in the corridor, doors and overhead utilities
 - On top of water and spoil control with bio bag dam, vacuum truck and experienced crews



Micropile @ Basement

1 - Quality

Highlights

- FRP @ Level 3
 - Done extensive coordination with manufacturer, PCC, Hacker and ABHT on pre-installation
 - Identified and solved the floor cracks with epoxy injection to keep up with schedule and warranty
 - Contained and tempered the FRP work area with plastic containment to protect the prep surface from water intrusion and freezing temperature



FRP @ Level 3 – Epoxy injection

2 – Schedule & Progress

Highlights

- ST Biology:
 - Commissioning and training on HVAC controls to be completed in Dec 2021
- All User Restrooms
 - Turned over 11/15/21
 - Shut down for permanent installation of HVAC exhaust fan 12/20 – 12/23



ADA shower and Full Height Toilet Partition @ HT All User Restroom

2 - Schedule & Progress

Highlights

- HT Renovation
 - Overall Schedule:
 - On track
 - Demolition
 - Interior Non-Structural Demolition Completed
 - Exterior South Restroom Bunker Starts 12/20/21
 - On going with slab on grade saw cutting
- Micropile
 - On track
 - Tie-back anchors at existing shearwalls - completed
 - Drilled (3) each of test micropiles
 - Drilled (4) each micropiles in basement
 - Moved to Level 1 next

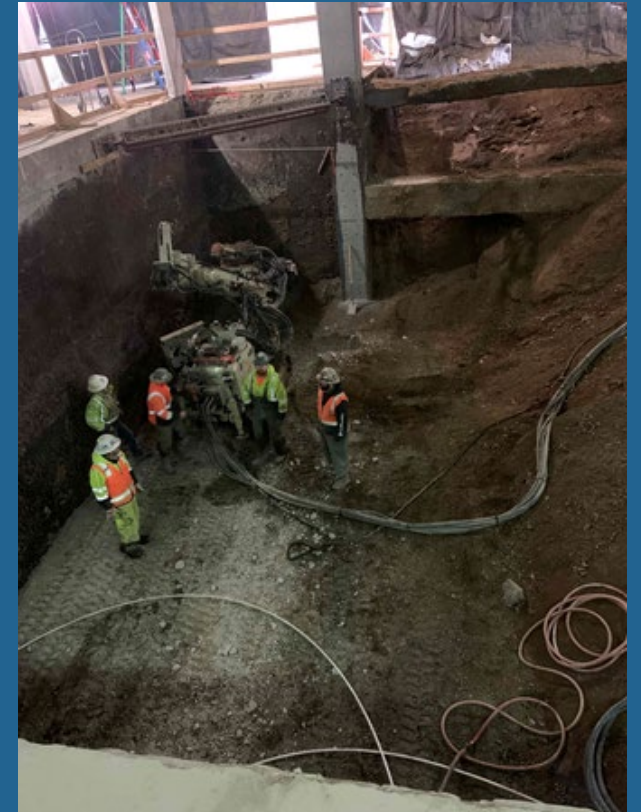


Monthly Report – December 2021

2 - Schedule & Progress

Highlights

- HT Renovation
 - Excavation
 - Dug and exposed grade beam @ 20 ft below grade on the East side
 - On going with exterior work
 - Concrete
 - On going with GPR scanning and drilling @ existing columns
 - FRP
 - On going with floor prep on Level 3



2 - Schedule & Progress

Highlights

- FRP
 - On going with floor prep on Level 3
- Upcoming Major Activities
 - Roof demolition for FRP
 - West side exterior ADA ramp
 - Structural steel
- Material Procurement Concerns
 - Structural steel and metal deck – checking on progress
 - Escalation: checking on mechanical AHU equipment



3 - Communication Notification

Highlights

- Disruption Notification
 - Loud noise activities from micropile on going to end of February
 - Micropile will be in Room 118 (adjacent to Medical Imaging room below) in the first week of Feb.
 - Temp heater installed in chiller room
 - Heat trace installed on exposed fire sprinkler and chiller piping
- Upcoming Logistics Changes
 - The All User Restroom (south on Level 2) is being used.
 - The exterior west ADA ramp (phase 1) will open in April 2022.
 - The south pedestrian accessible routing will open in April 2022

4 - COBID & Workforce Training

Highlights

- Workforce Report
 - November Report from City of Portland
 - Minorities (%) : 20.39% vs. 20.21% from Oct
 - Women (%) : 8.75% vs. 6% from Oct.
 - Apprentice (%) : 21.57% vs. 21.57 % from Oct.
 - Rise Up Development (Respectful Workplace Program)
 - Incorporated into orientation, tool box meetings
 - Amy James Neel attended one of the Lewis' Orientation in Oct.
- COBID
 - Current total of Subcontractor Utilization is at 16% for all swing space projects.
 - COBID % projecting for HT based on bid values
 - \$13.8 mil or 25% (goal is 20%)
 - MBE: \$513,000 (1%)
 - WBE: \$8.52 mil (15%)
 - ESB: \$4.78 mil (8%)