



FACILITIES PLAN SOUTHEAST CAMPUS WORKSHOP SPRING 2021



**Portland
Community
College**

Planning & Capital
Construction

- 1** *WHAT IS A FACILITIES PLAN?*
- 2** *SCHEDULE AND COMMUNITY INPUT*
- 3** *BREAKOUT DISCUSSIONS*
- 4** *WRAP UP AND NEXT STEPS*

PHASE I: EXISTING CONDITIONS COMPLETED 2019

AREAS OF WORK:

**Capital Projects
Space Utilization
Facility Conditions Assessment
Information Technology
Safety and Security
ADA
Transportation and Parking
Sustainability
CRT Student Cohort - Space Matters**



PHASE II: LONG-TERM VISION 2020 - 2021

AREAS OF WORK:

**Demographic And Space Needs Analysis
Future Development Capacity Studies
Transportation Recommendations
2022 Bond Projects
Integration With District Processes
Communication, Outreach, Engagement
CRT Student Cohort - Future Space**

FACILITIES PLANNING

SPACE NEEDS ANALYSIS

SPACE NEEDS ASSESSMENT
BUILDING FUNCTIONAL
ASSESSMENT

DEMOGRAPHIC ANALYSIS

DEMOGRAPHIC + ENROLLMENT
ANALYSIS
AFFORDABLE HOUSING STUDY

FACILITIES PLAN

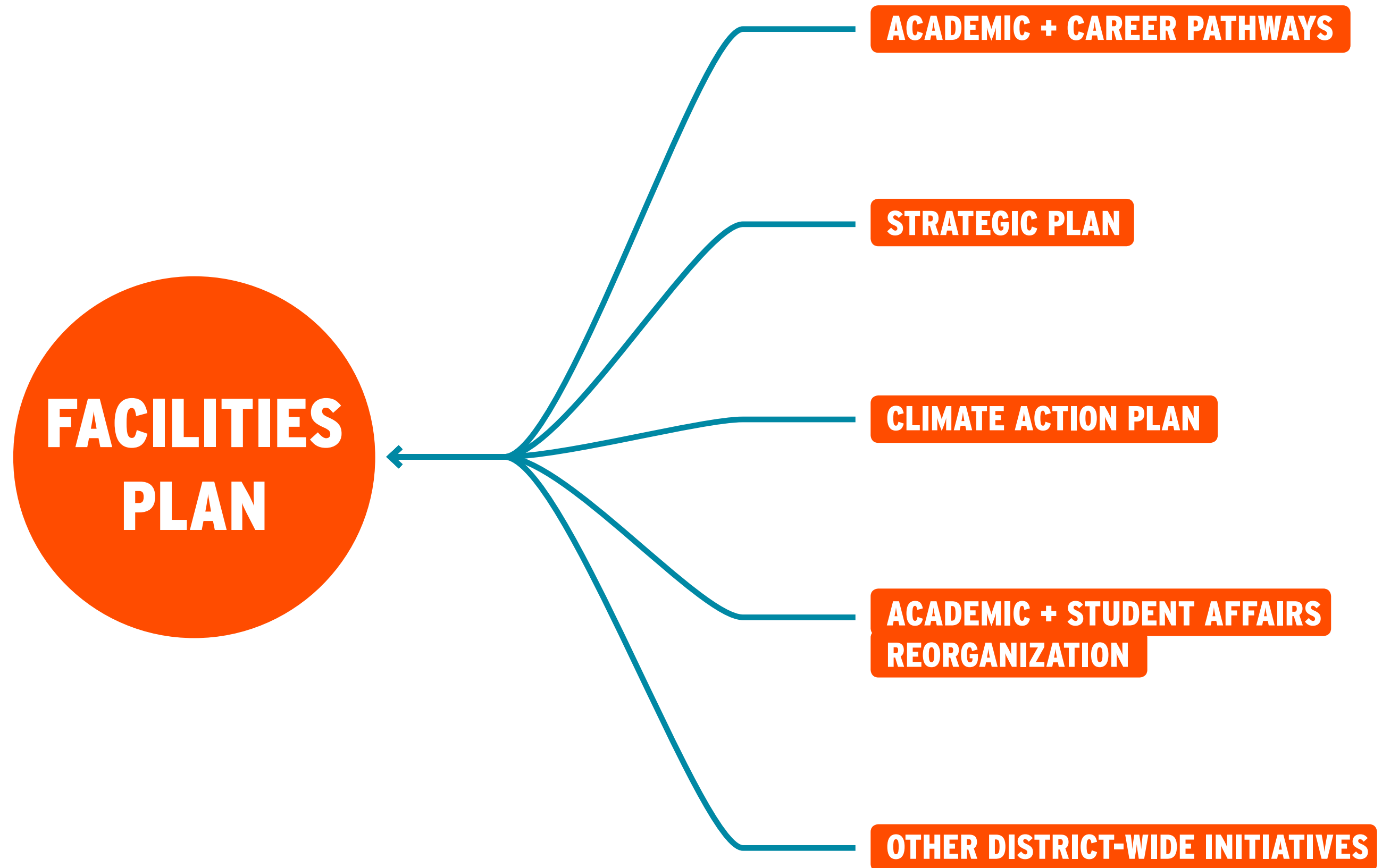
COMMUNICATION, OUTREACH + ENGAGEMENT

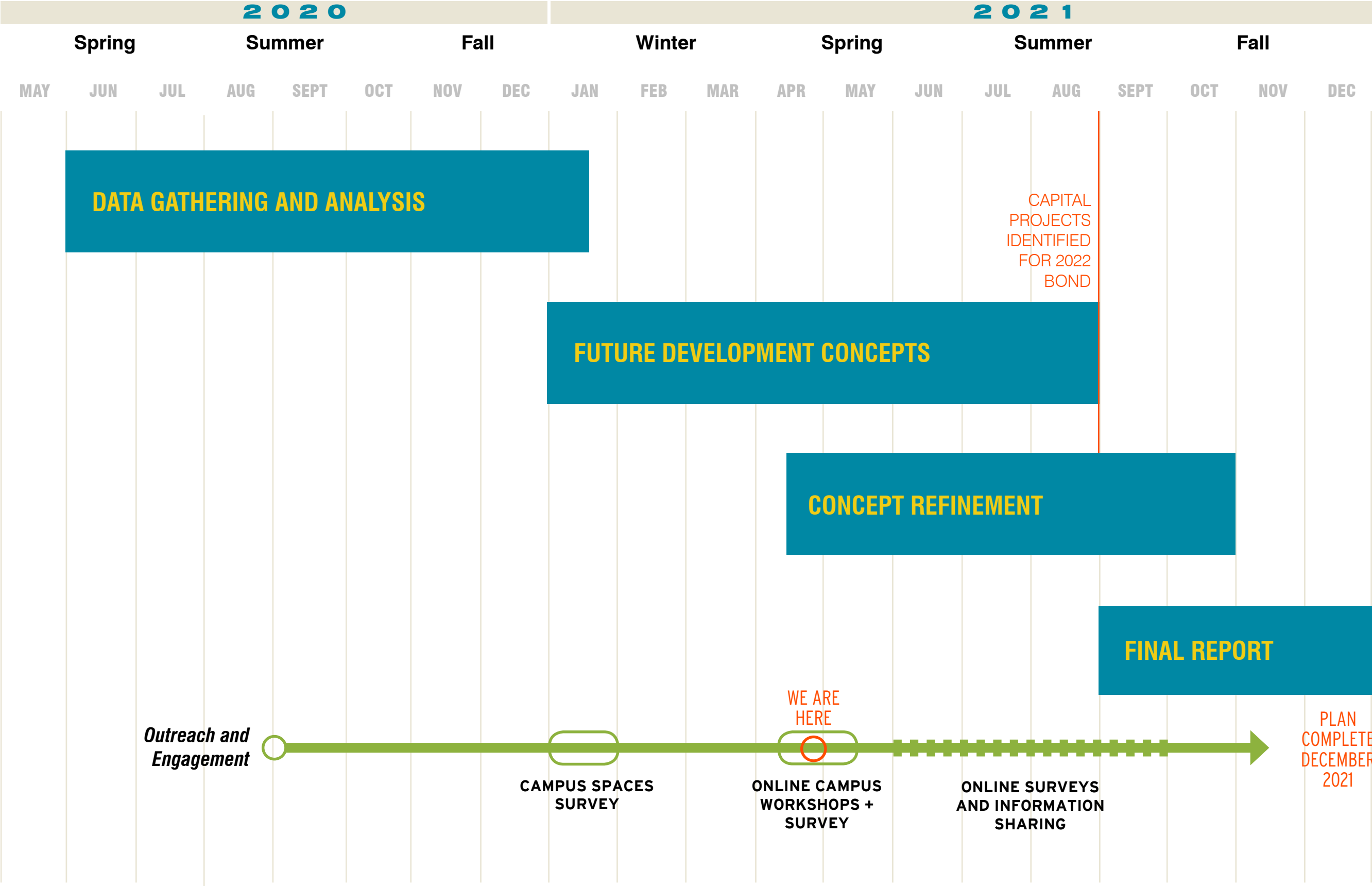
CRT STUDENT COHORT
ONLINE SURVEYS
LISTENING SESSIONS
WORKSHOPS
TABLING

DEVELOPMENT CONCEPTS

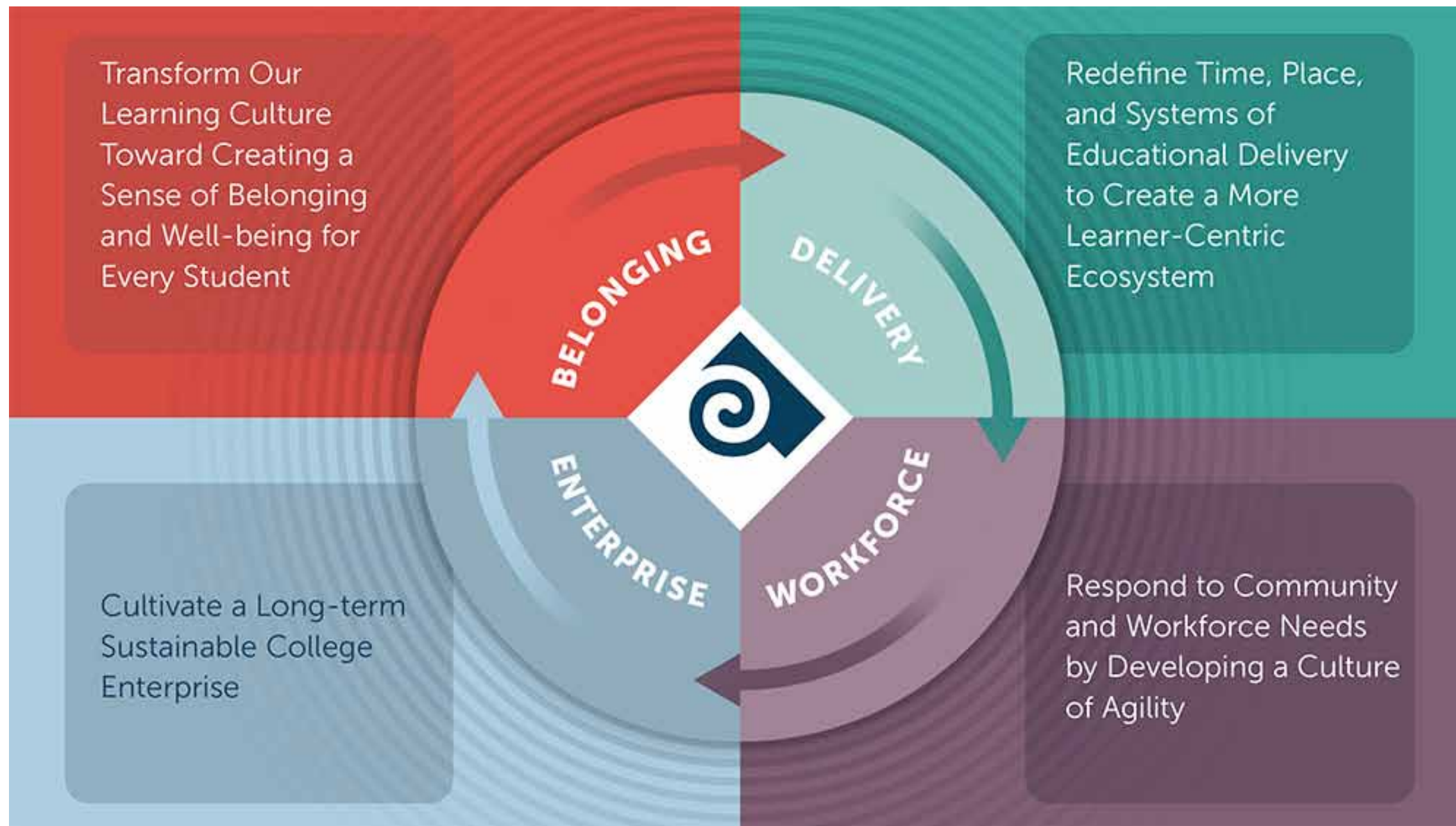
ZONING+REGULATORY REVIEW
POTENTIAL DEVELOPMENT SITES+CAPACITY
TRANSPORTATION IMPROVEMENTS
CAPITAL PROJECTS LIST
BOND PROJECTS LIST

**CRT + DESIGN JUSTICE
FRAMEWORK**

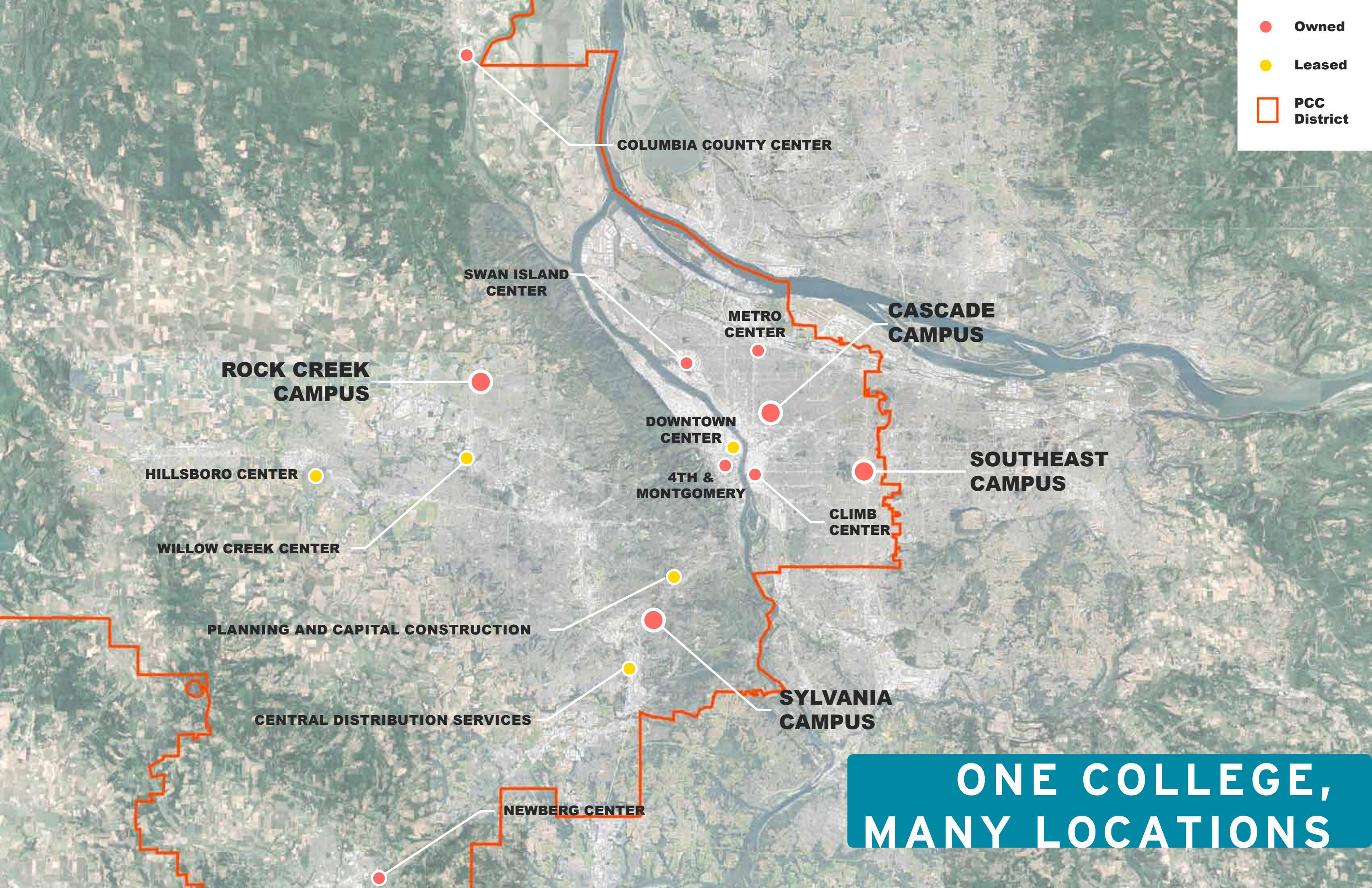




PROJECT SCHEDULE



STRATEGIC PLAN AND "ONE COLLEGE" MODEL



Owned

Leased

PCC District

COLUMBIA COUNTY CENTER

SWAN ISLAND CENTER

METRO CENTER

CASCADE CAMPUS

ROCK CREEK CAMPUS

DOWNTOWN CENTER

SOUTHEAST CAMPUS

HILLSBORO CENTER

4TH & MONTGOMERY

CLIMB CENTER

WILLOW CREEK CENTER

PLANNING AND CAPITAL CONSTRUCTION

SYLVANIA CAMPUS

CENTRAL DISTRIBUTION SERVICES

NEWBERG CENTER

ONE COLLEGE,
MANY LOCATIONS





The background of the slide is a faded, artistic rendering of a campus scene. On the left, there is a large building with a grid of windows. In the center and right, there is a large, dark statue of a person, possibly a historical figure, standing on a pedestal. The overall tone is muted and artistic.

CONSIDER: WHAT MAKES A SPACE FEEL WELCOMING TO YOU?

How can PCC spaces better support and reflect the experiences, cultures, and contributions of BIPOC students, faculty, and staff?

How can PCC spaces better support, embody, and reflect the many dimensions of diversity in the PCC community?

Are there barriers to equitable student success at this campus that the Facilities Plan can help to dismantle?

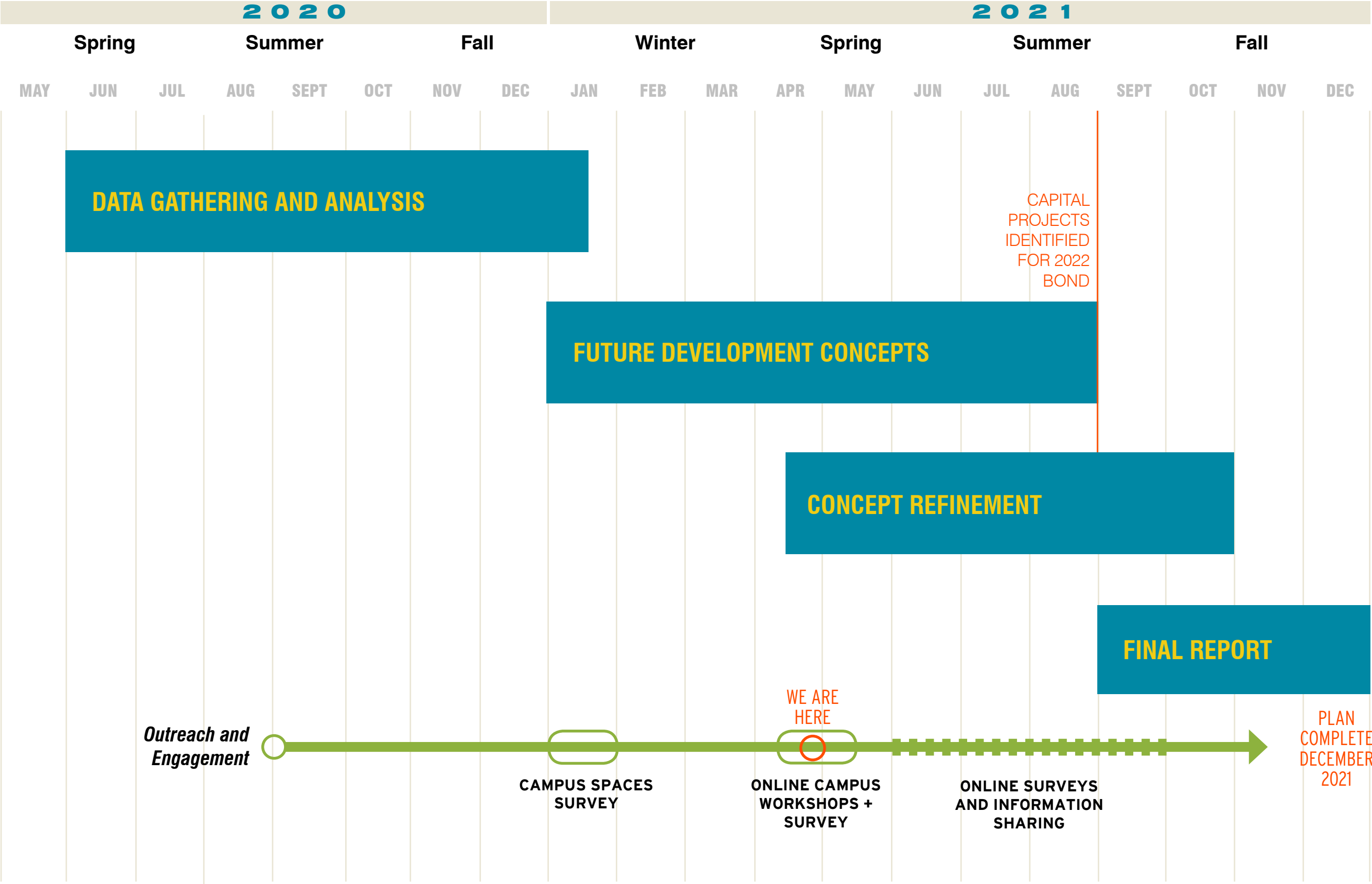
Note: Amara H. Pérez, PhD., worked with the Facilities Planning team to introduce a Critical Race Spatial Lens. These questions are informed by Dr. Perez's work. Dr. Perez developed and coordinated Space Matters, designed to recruit, train, and support a cohort of PCC students of color to work as co-researchers in phase one of the planning process. For more information check out the project link: www.spacemattersatpcc.com

CAMPUS SPACE & CRITICAL RACE THEORY

The background image is a faded, artistic rendering of a campus scene. On the left, there is a large building with a grid of windows. In the center, a person is walking on a path. On the right, a large, dark, textured statue of a person is visible. The overall tone is light and airy, with a focus on the architectural and sculptural elements of the campus.

TODAY WE WANT TO LEARN ABOUT:

- *Your perception and experience of physical spaces at Southeast Campus*
- *Your vision for the future of campus spaces*
- *Your thoughts and ideas about how campus spaces can be made more welcoming*



PROJECT SCHEDULE



THANK YOU!

- ***FILL IN AND SHARE THE ONLINE SURVEY
VERSION OF THE CAMPUS WORKSHOPS:***

<https://www.surveymonkey.com/r/D5H8M7S>

- ***CONTACT REBECCA OCKEN BY EMAIL WITH
ANY COMMENTS OR QUESTIONS:***

REBECCA.OCKEN@PCC.EDU