

A watercolor illustration of a modern, multi-story building with a courtyard. The building features large windows with horizontal blinds and colorful panels in shades of orange, blue, and grey. In the foreground, a person is sitting on a wooden bench, looking at a book. The courtyard is filled with various plants, including tall grasses and white flowers. The overall style is artistic and painterly.

FACILITIES PLAN CASCADE CAMPUS WORKSHOP SPRING 2021



**Portland
Community
College**

Planning & Capital
Construction

- 1** *WHAT IS A FACILITIES PLAN?*
- 2** *SCHEDULE AND COMMUNITY INPUT*
- 3** *BREAKOUT DISCUSSIONS*
- 4** *WRAP UP AND NEXT STEPS*

SPACE NEEDS ANALYSIS

SPACE NEEDS ASSESSMENT
BUILDING FUNCTIONAL
ASSESSMENT

DEMOGRAPHIC ANALYSIS

DEMOGRAPHIC + ENROLLMENT
ANALYSIS
AFFORDABLE HOUSING STUDY

FACILITIES PLAN

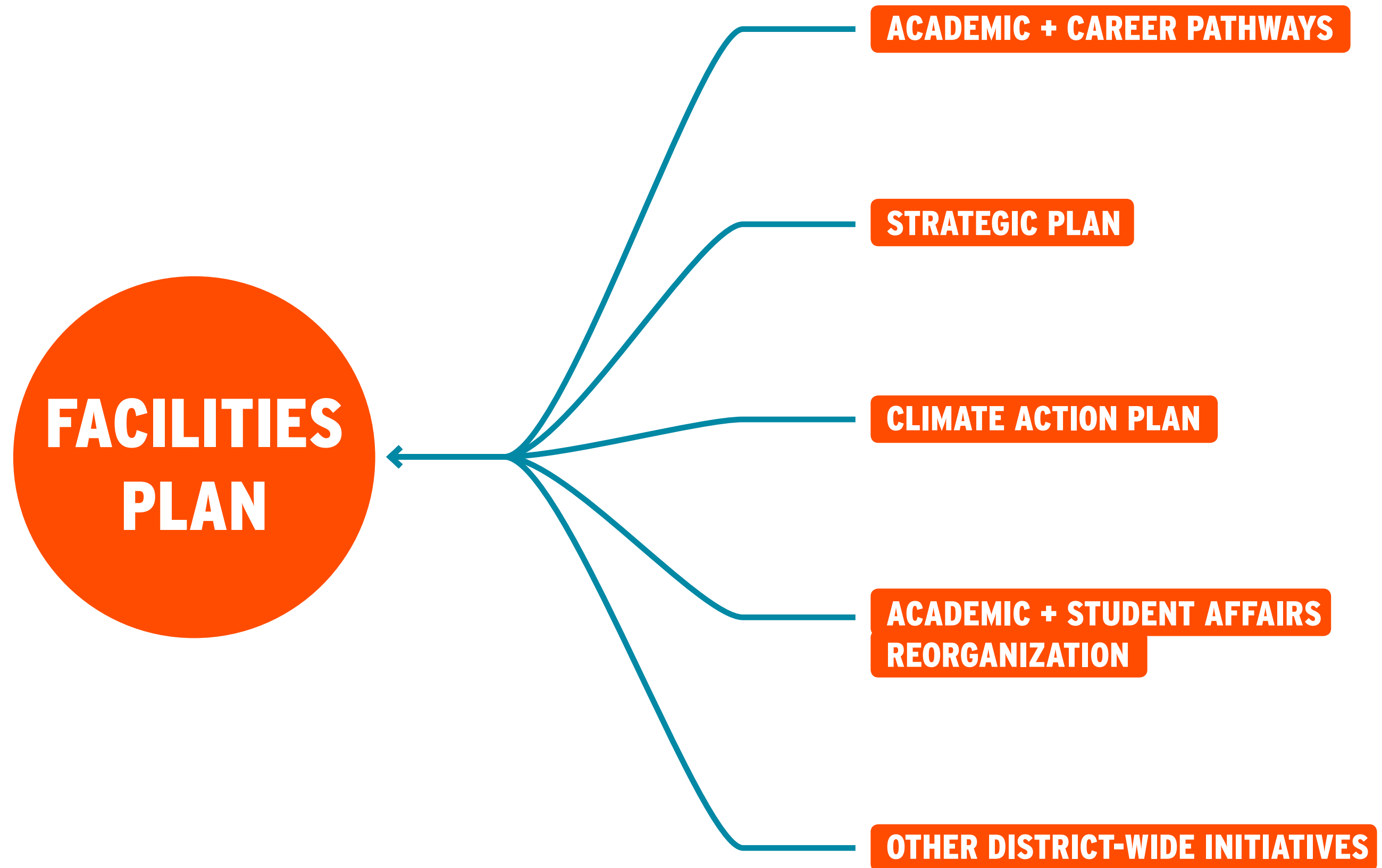
COMMUNICATION, OUTREACH + ENGAGEMENT

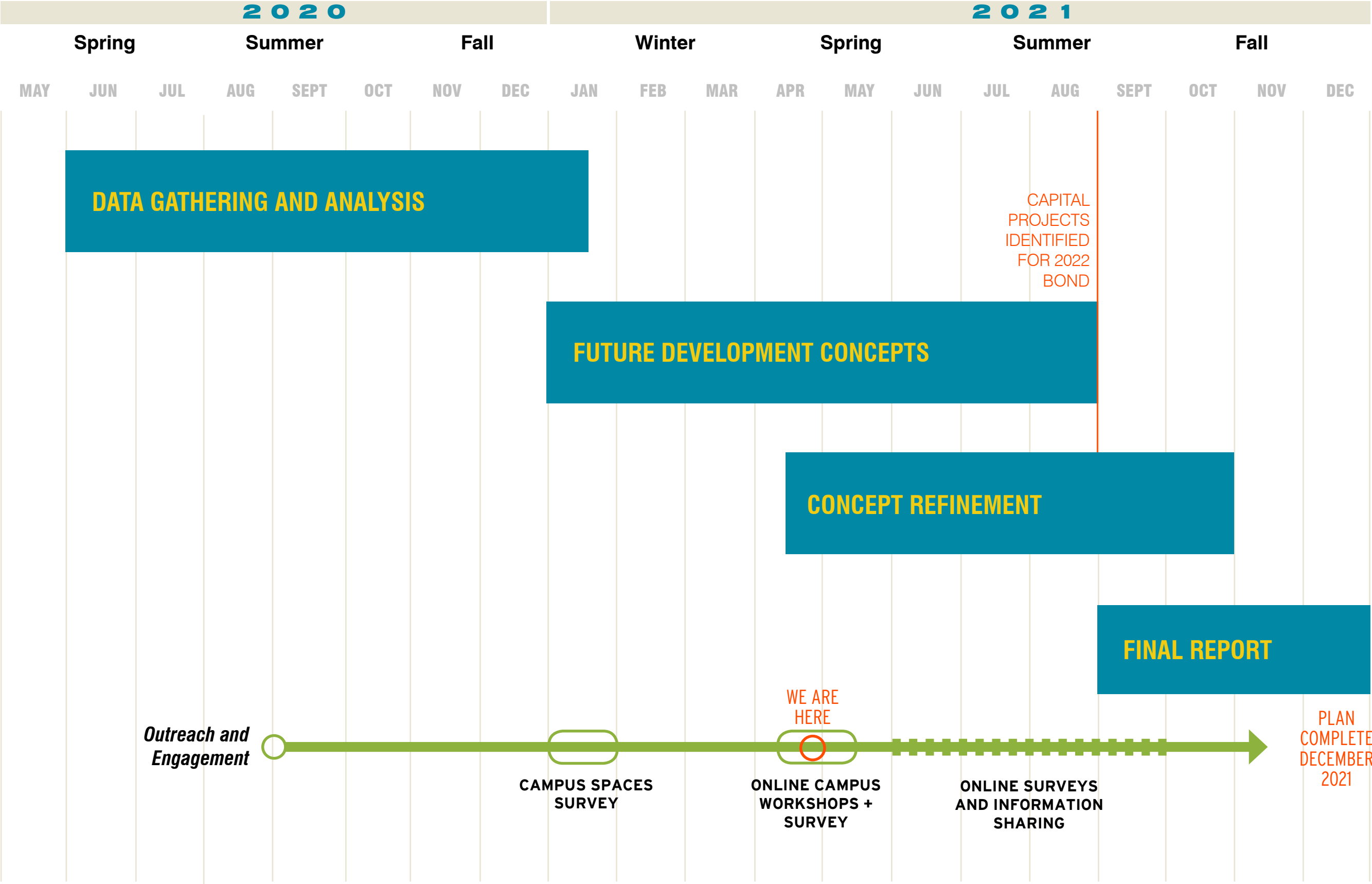
CRT STUDENT COHORT
ONLINE SURVEYS
LISTENING SESSIONS
WORKSHOPS
TABLING

DEVELOPMENT CONCEPTS

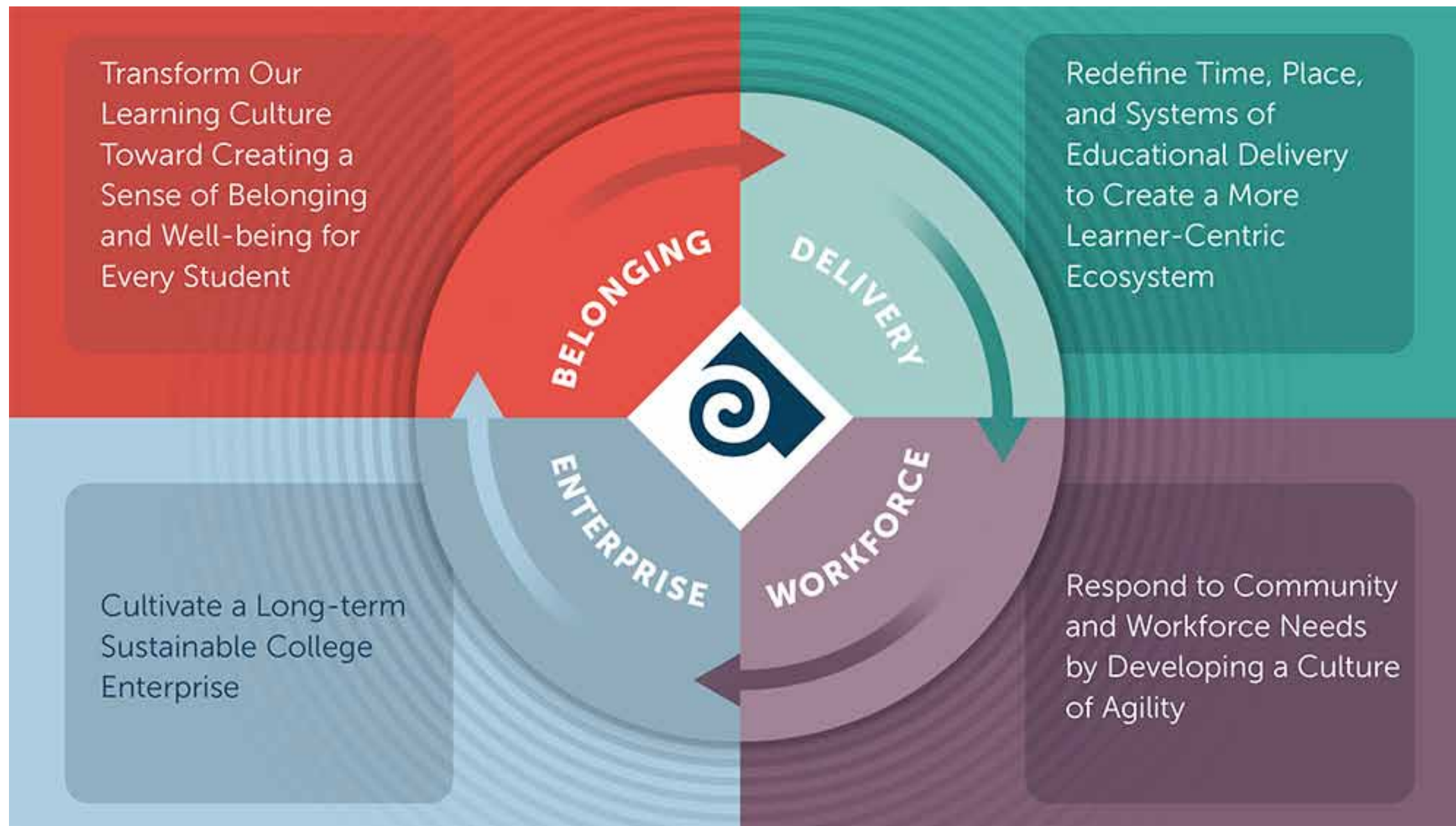
ZONING+REGULATORY REVIEW
POTENTIAL DEVELOPMENT SITES+CAPACITY
TRANSPORTATION IMPROVEMENTS
CAPITAL PROJECTS LIST
BOND PROJECTS LIST

**CRT + DESIGN JUSTICE
FRAMEWORK**

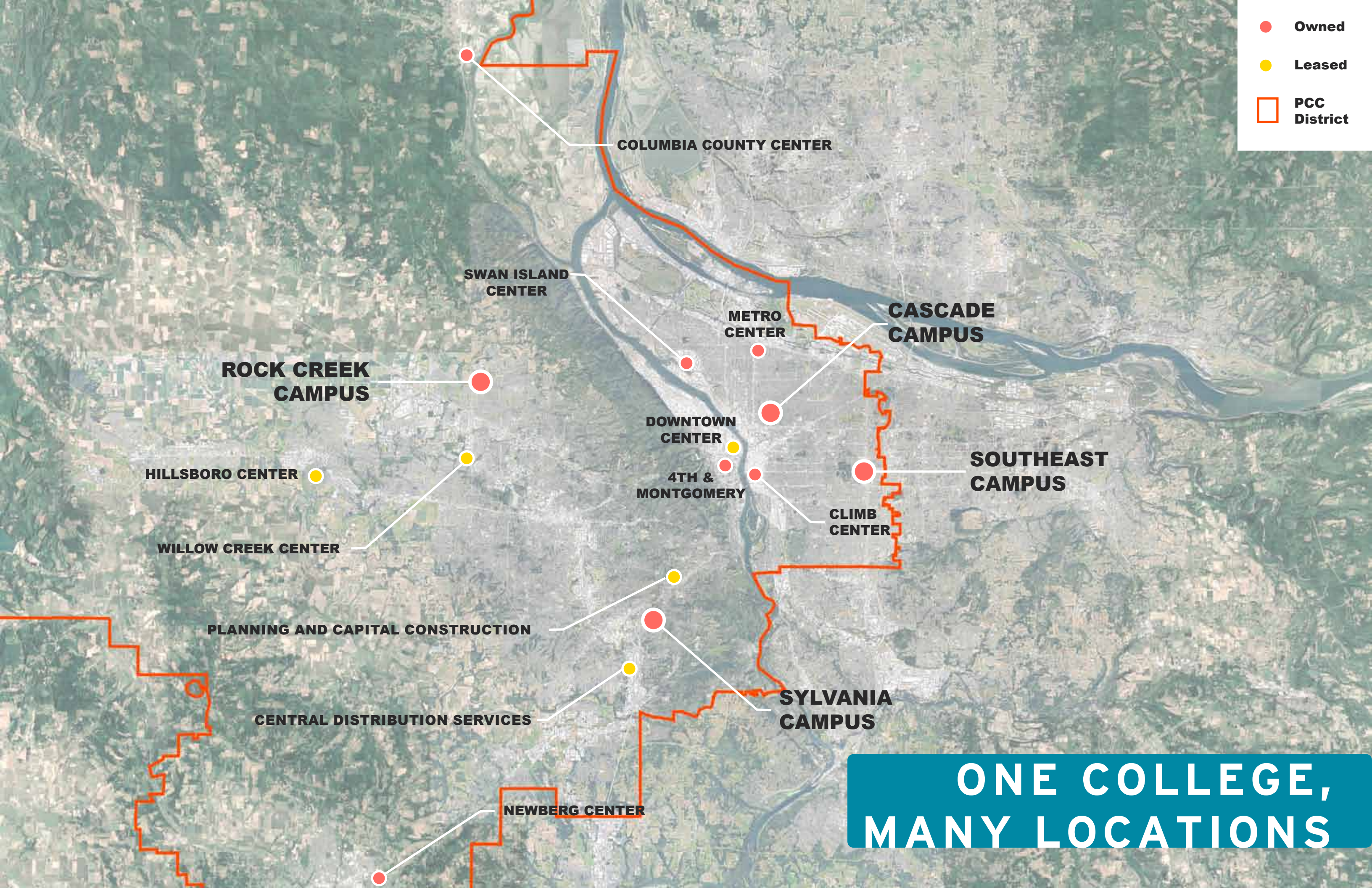




PROJECT SCHEDULE



STRATEGIC PLAN AND "ONE COLLEGE" MODEL



Owned

Leased

PCC District

COLUMBIA COUNTY CENTER

SWAN ISLAND CENTER

ROCK CREEK CAMPUS

HILLSBORO CENTER

WILLOW CREEK CENTER

PLANNING AND CAPITAL CONSTRUCTION

CENTRAL DISTRIBUTION SERVICES

NEWBERG CENTER

METRO CENTER

DOWNTOWN CENTER

4TH & MONTGOMERY

CLIMB CENTER

CASCADE CAMPUS

SOUTHEAST CAMPUS

SYLVANIA CAMPUS

**ONE COLLEGE,
MANY LOCATIONS**







CONSIDER: WHAT MAKES A SPACE FEEL WELCOMING TO YOU?

How can PCC spaces better support and reflect the experiences, cultures, and contributions of BIPOC students, faculty, and staff?

How can PCC spaces better support, embody, and reflect the many dimensions of diversity in the PCC community?

Are there barriers to equitable student success at this campus that the Facilities Plan can help to dismantle?

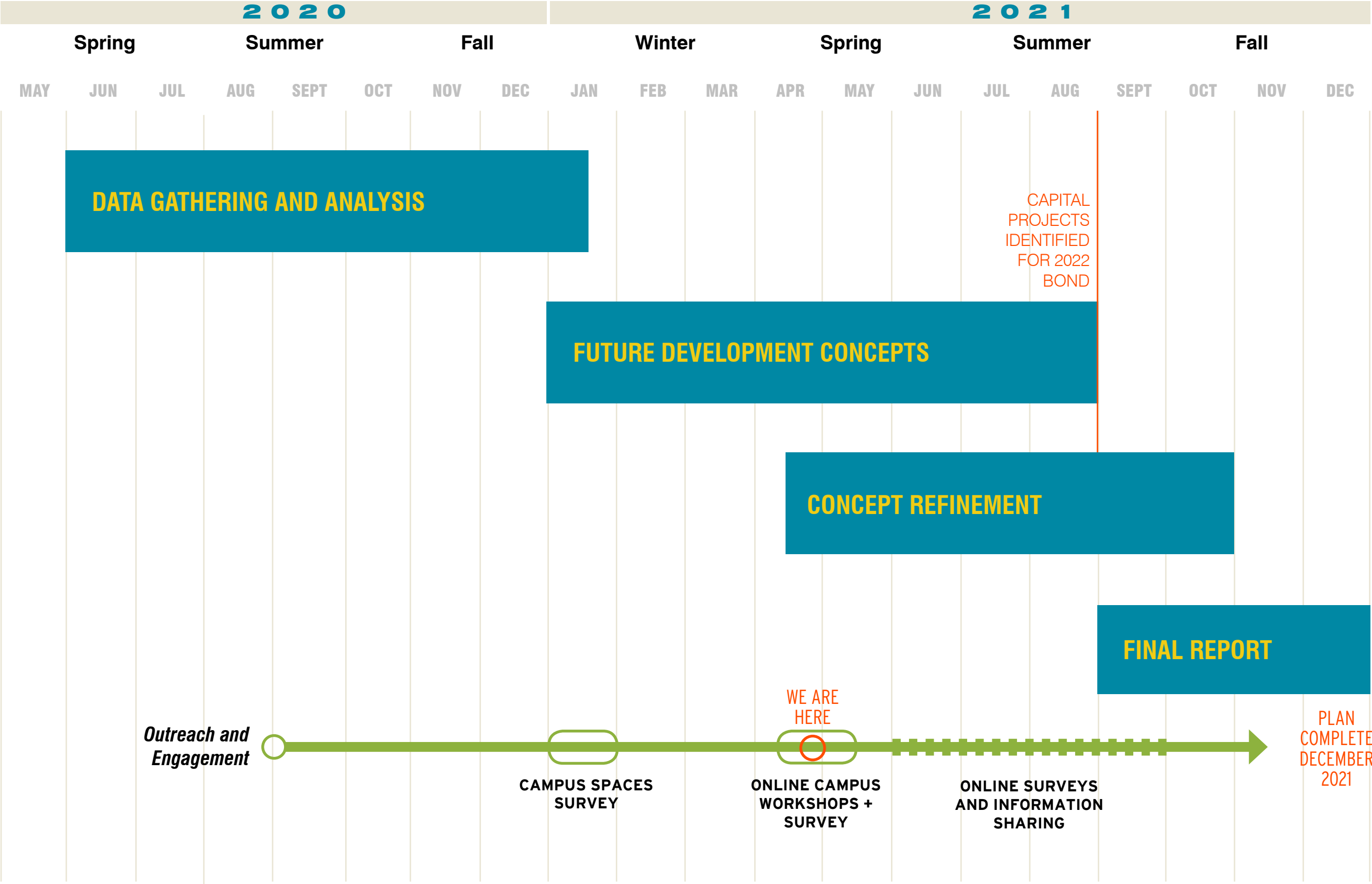
Note: Amara H. Pérez, PhD., worked with the Facilities Planning team to introduce a Critical Race Spatial Lens. These questions are informed by Dr. Perez's work. Dr. Perez developed and coordinated Space Matters, designed to recruit, train, and support a cohort of PCC students of color to work as co-researchers in phase one of the planning process. For more information check out the project link: www.spacemattersatpcc.com

CAMPUS SPACE & CRITICAL RACE THEORY

The background image is a photograph of a modern, multi-story building with a courtyard. The building has large windows and balconies. In the foreground, there is a concrete platform or bench where a person is sitting. The person is wearing a blue jacket and is looking down at something in their hands. There are some plants and flowers in the foreground, including a large white flower bush on the left. The overall scene is bright and sunny.

TODAY WE WANT TO LEARN ABOUT:

- *Your perception and experience of physical spaces at Cascade Campus*
- *Your vision for the future of campus spaces*
- *Your thoughts and ideas about how campus spaces can be made more welcoming*



PROJECT SCHEDULE

THANK YOU!

- *FILL IN AND SHARE THE ONLINE SURVEY VERSION OF THE CAMPUS WORKSHOPS:*

<https://www.surveymonkey.com/r/D5H8M7S>

- *CONTACT REBECCA OCKEN BY EMAIL WITH ANY COMMENTS OR QUESTIONS:*

REBECCA.OCKEN@PCC.EDU