

BORA

Portland Community College

Opportunity Center

OAC Meeting
September 28, 2020

AGENDA

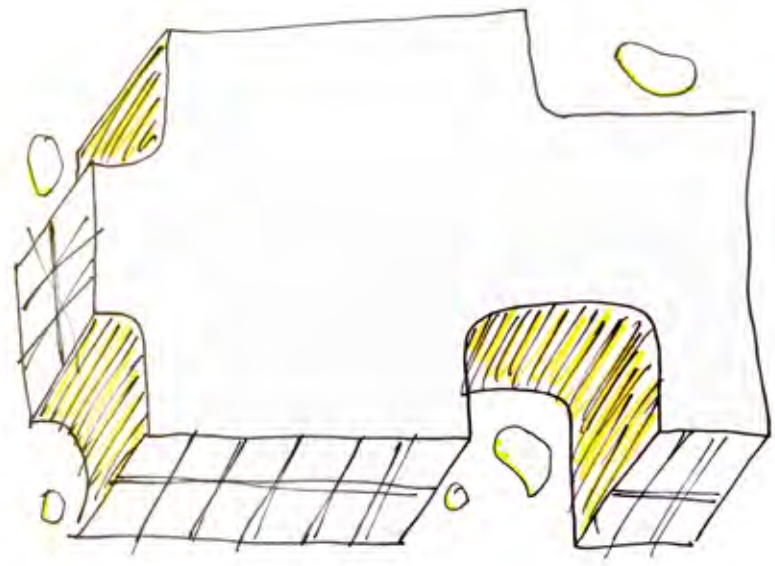
Agenda	00:03
Building Update	00:30
Floor Plans	
Lobby/Front Office	
Site Design Elements	00:40
Design Justice	
Break	00:05
Moment of Reflection	00:20
Guiding Principles	
Project Update	00:20
Next Steps	00:02

00:30

Building Design Update



EXTERIOR DESIGN DEVELOPMENT

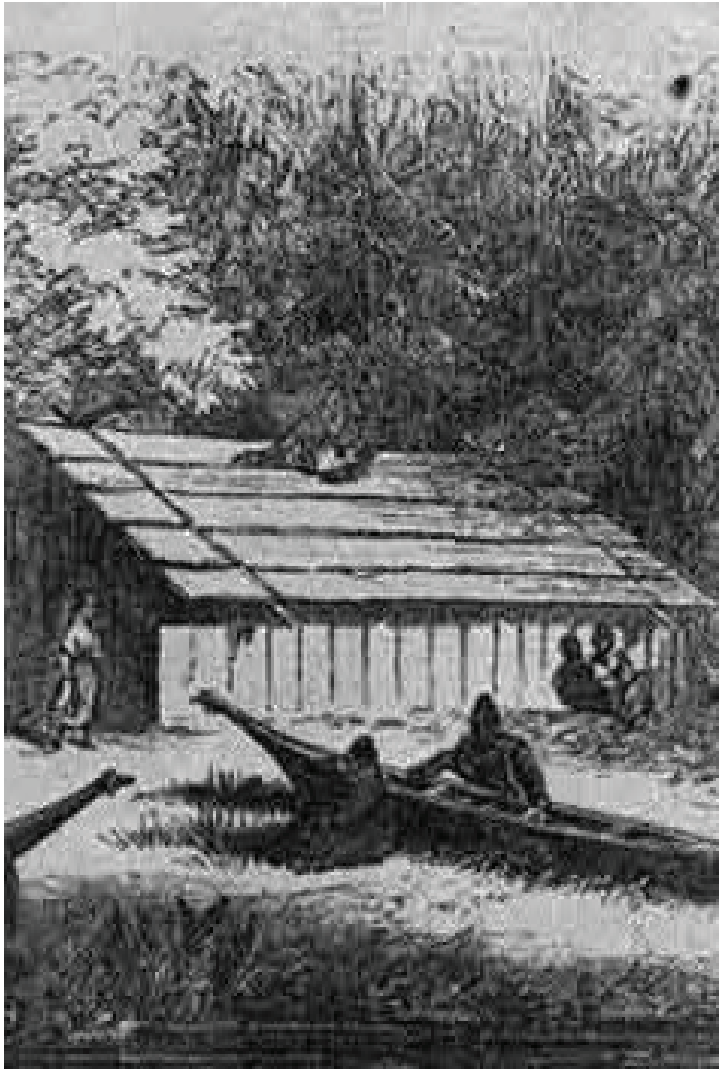


DESIGN CONCEPT



Wood as a central design concept providing tangible benefits at multiple scales.

MULTIPLICITY



CONTEXT
Site Heritage
PNW
Regional Economy



NEIGHBORHOOD
Reduce Heat Island
Air Quality
Carbon Sequestration



SUSTAINABILITY
Mass Timber
Carbon Reduction
Construction Efficiencies

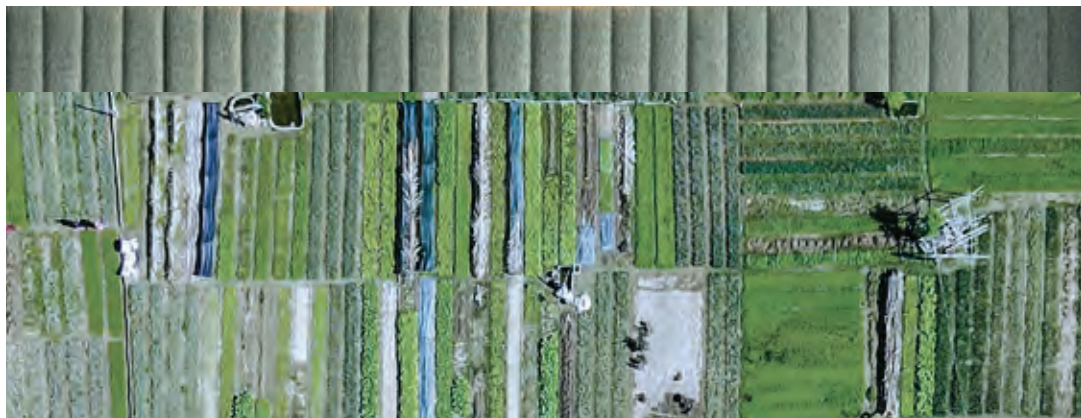
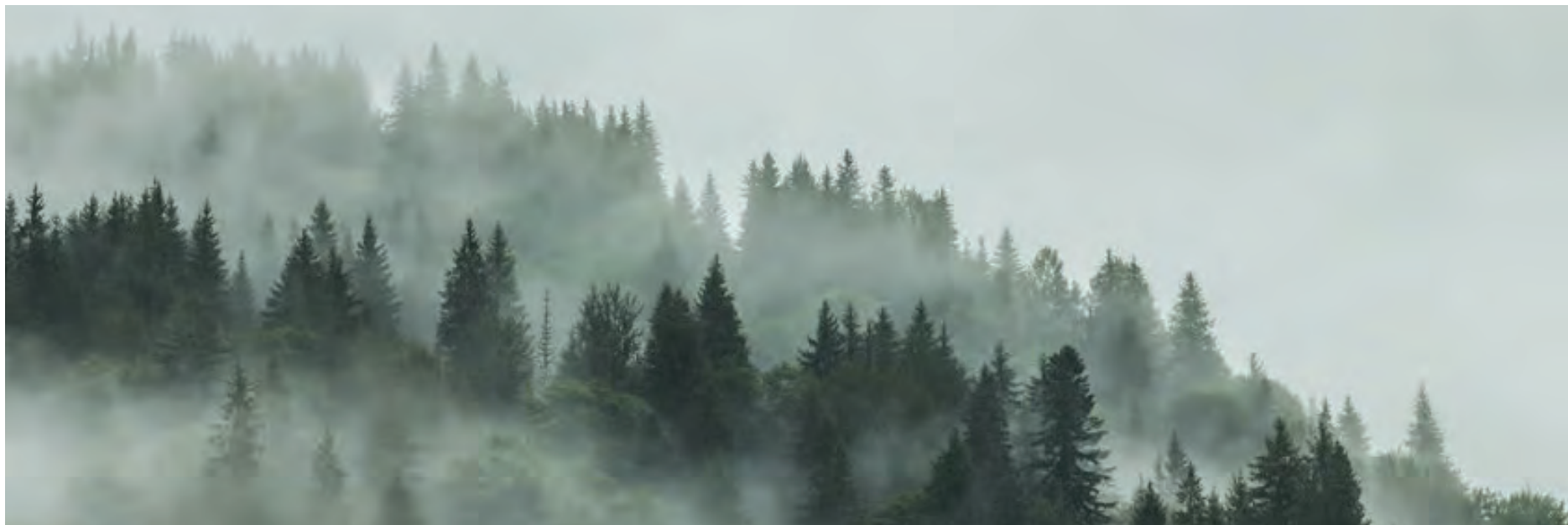
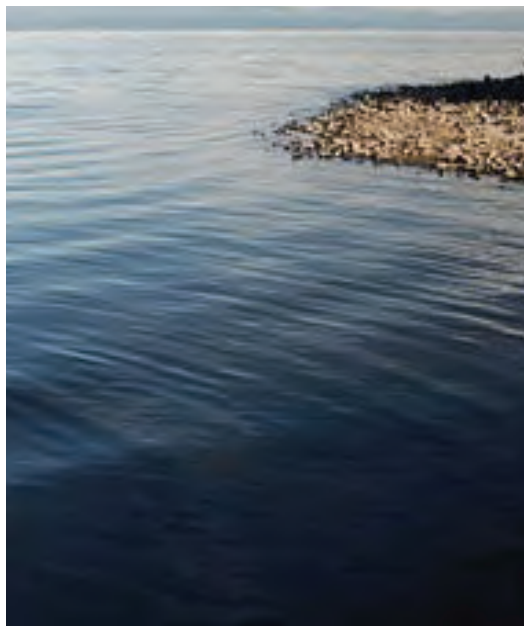
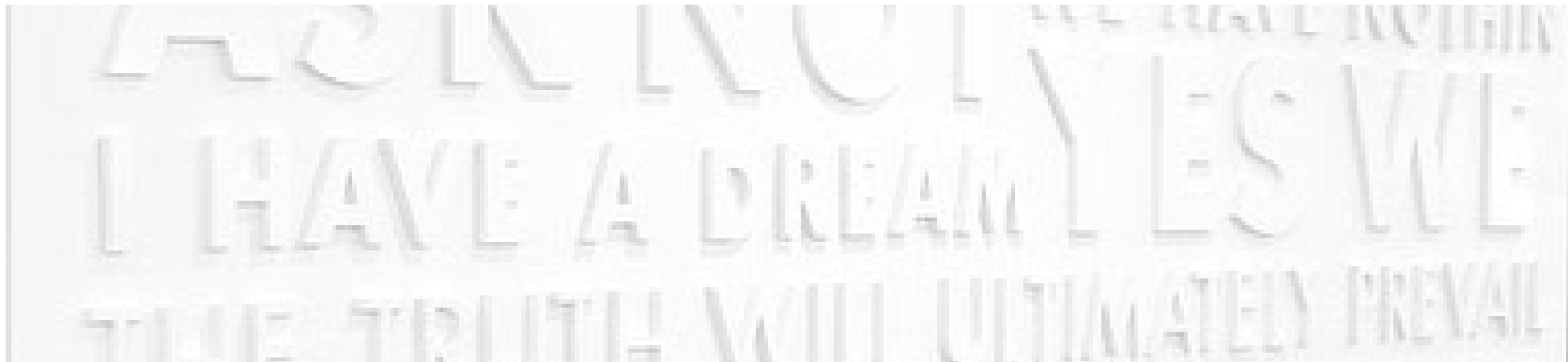
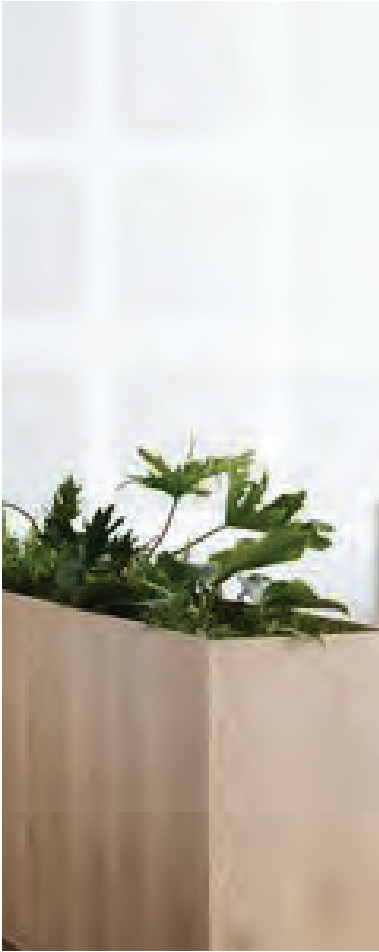


EXTERIOR
Intuitive
Hospitality
Warmth



INTERIOR
Biophilic
Beauty / Wellbeing
Trauma Informed Design

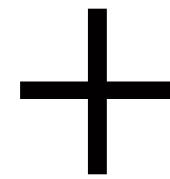
PCC OPPORTUNITY CENTER LOOK AND FEEL





NATURE

Calm
Harmony
Organic
Rhythm



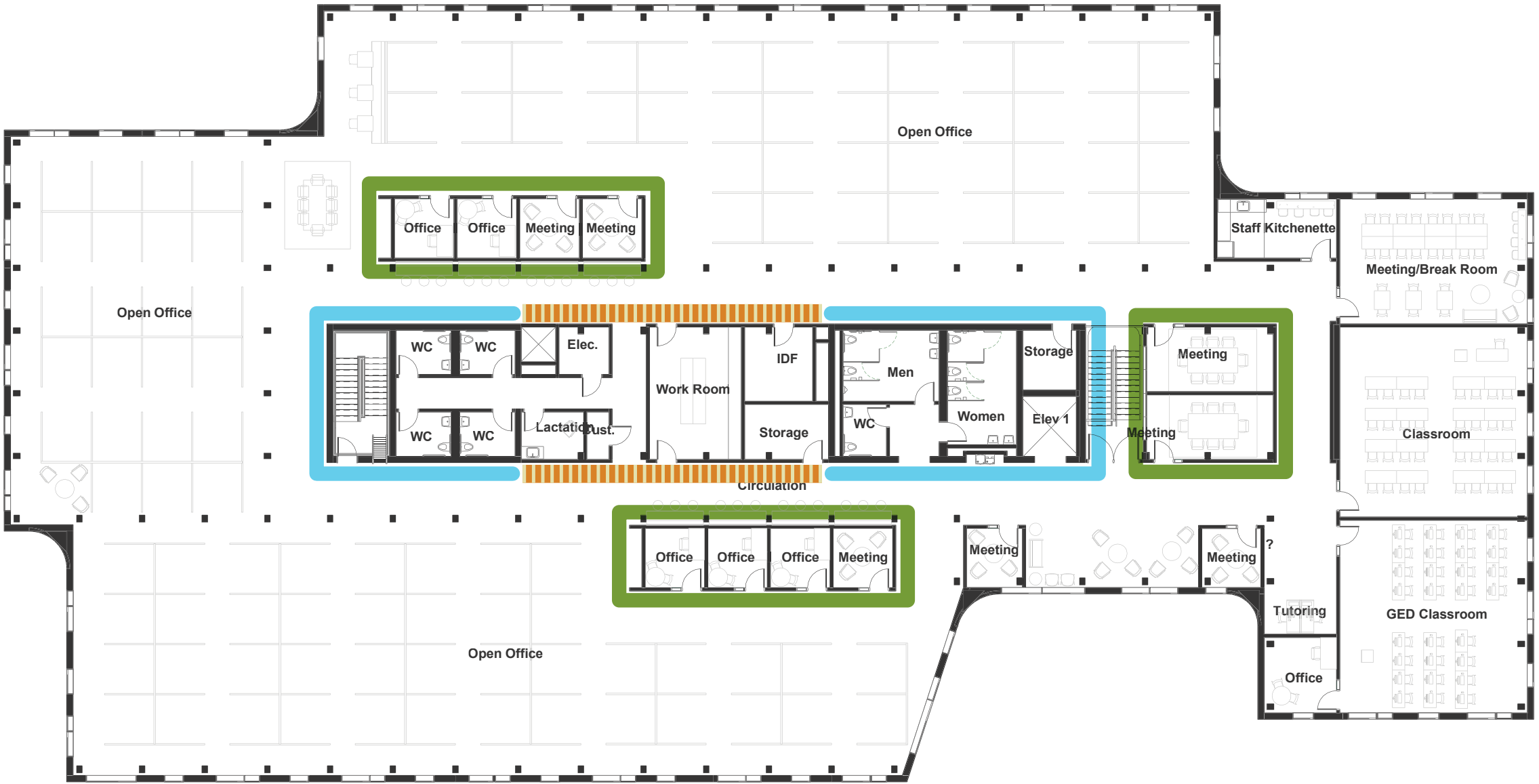
CULLY + CONCORDIA

Distinctive
Color
Diversity
Texture/Pattern

WOOD + COLOR

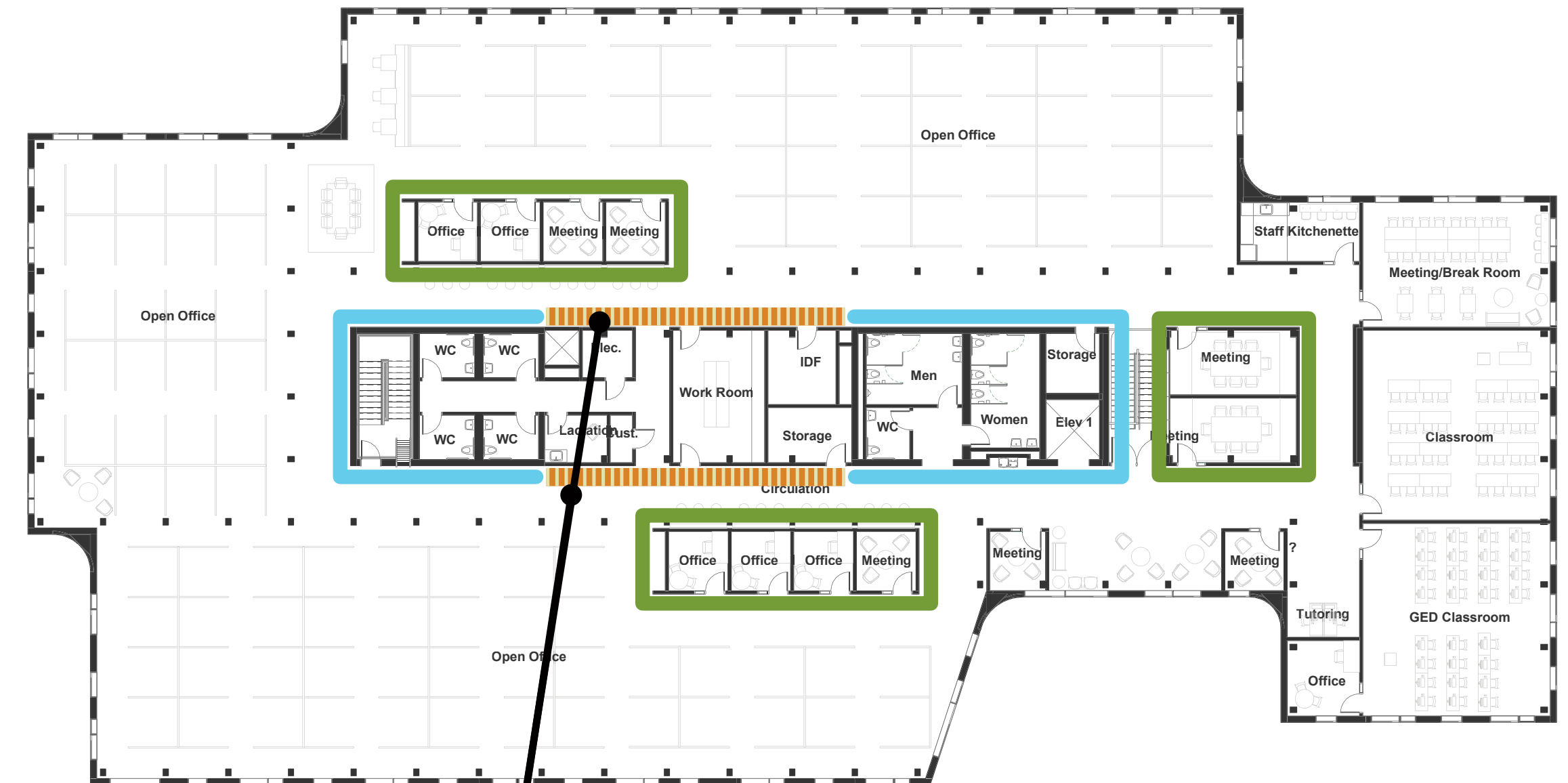


CONNECTIVE DESIGN ELEMENT

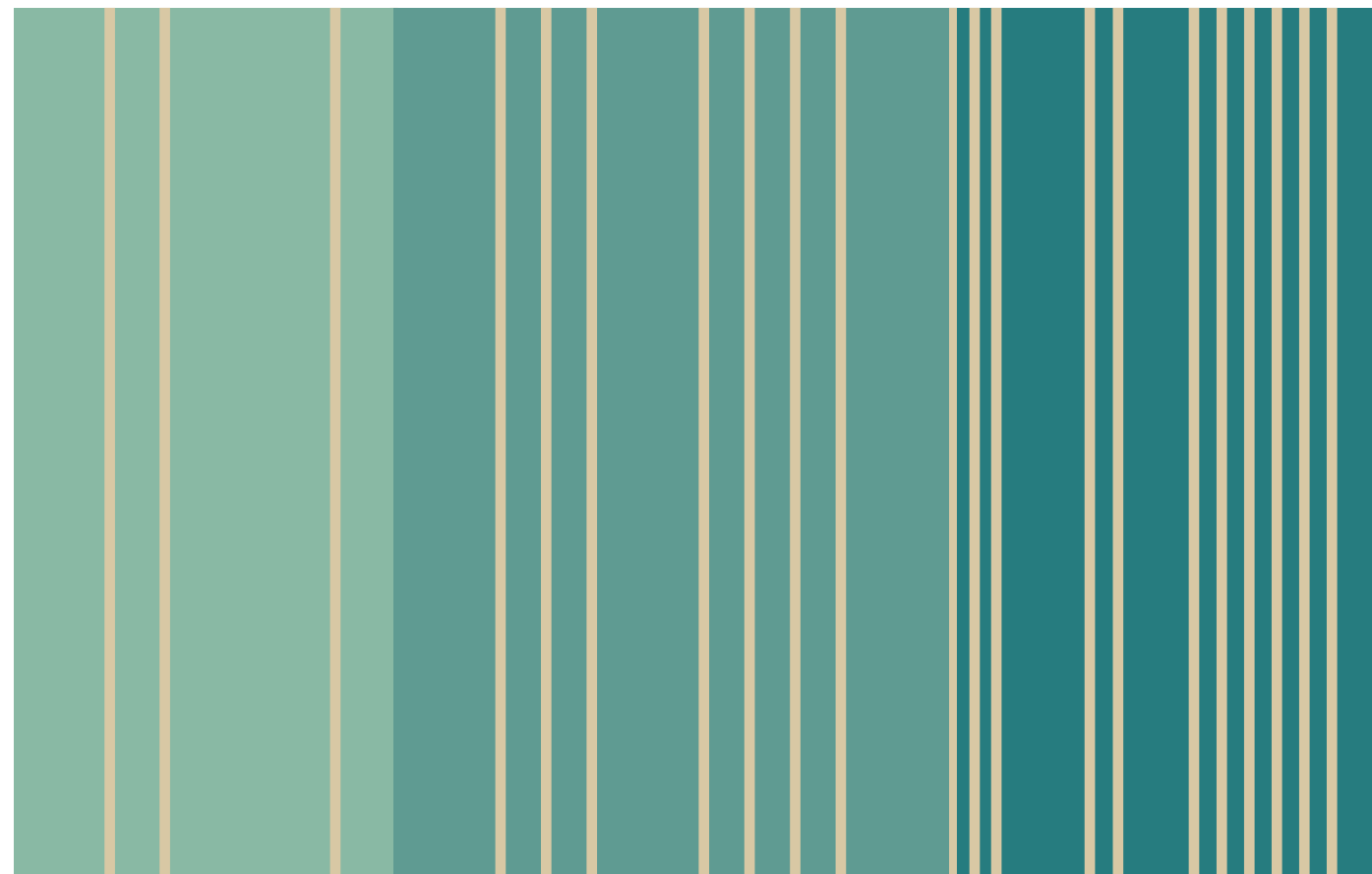
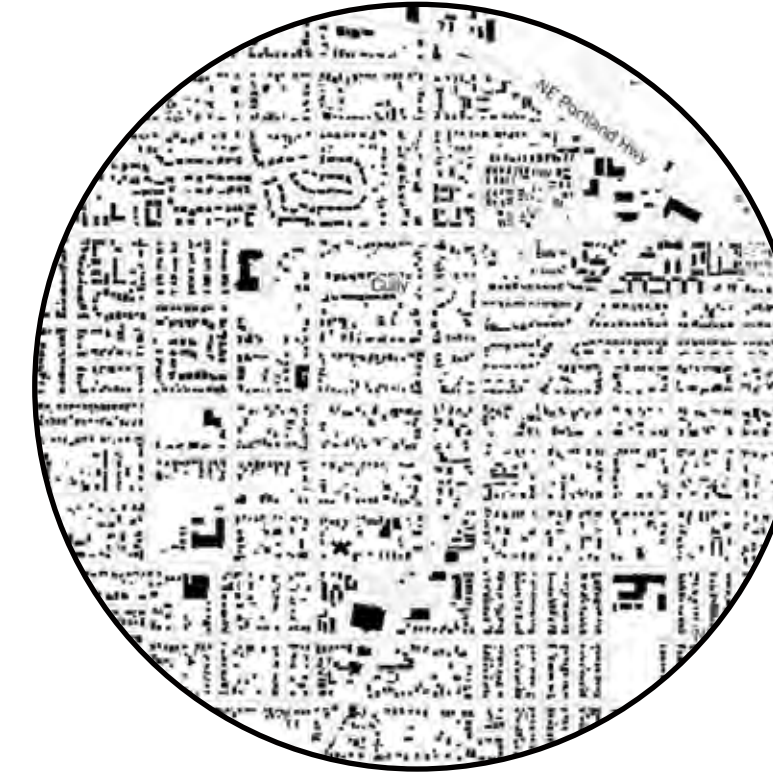


- WOOD + COLOR DESIGN ELEMENT
- CONCRETE CORE WALL
- PAINTED WALL
- GRAPHIC / MURAL WALL

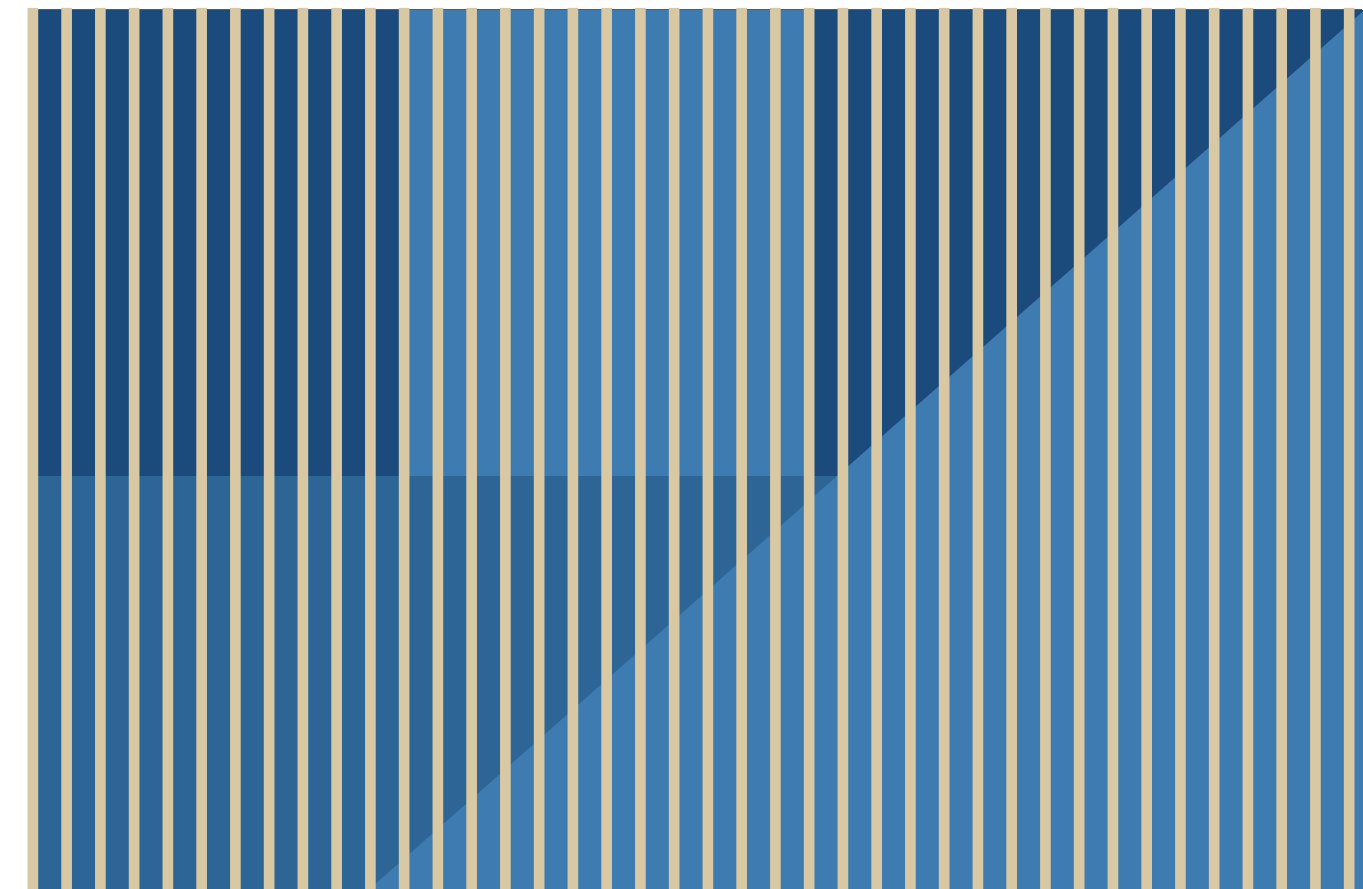
CONNECTIVE DESIGN ELEMENT



- WOOD + COLOR DESIGN ELEMENT
- CONCRETE CORE WALL
- PAINTED WALL
- GRAPHIC / MURAL WALL

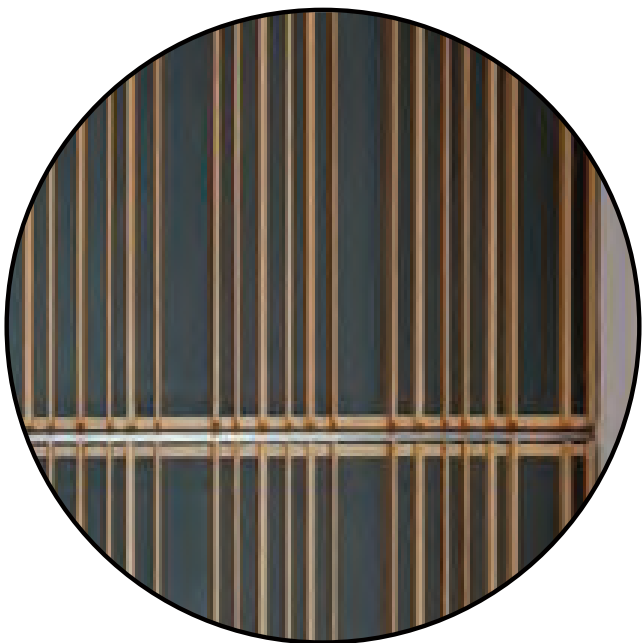
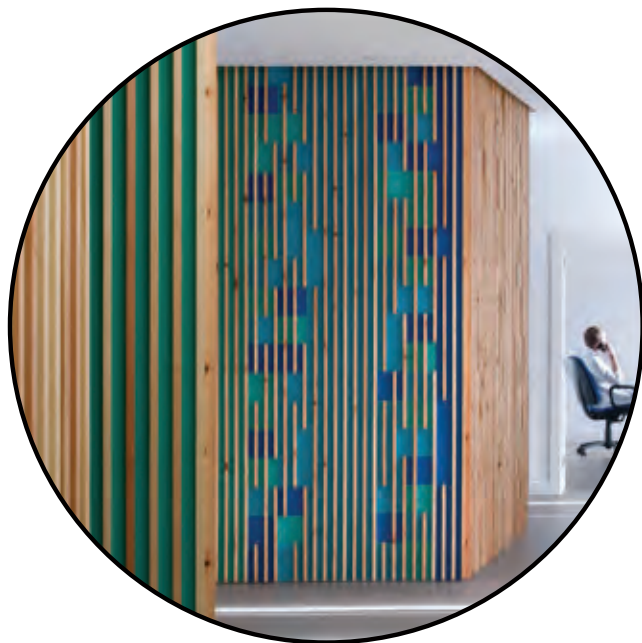


NATIVE FOREST

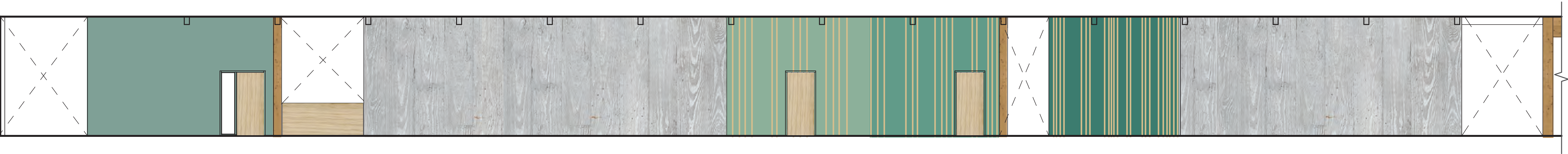


CULLY BOULEVARD

CONNECTIVE DESIGN ELEMENT CORE APPLICATION



LEVEL 01 CORRIDOR SOUTH

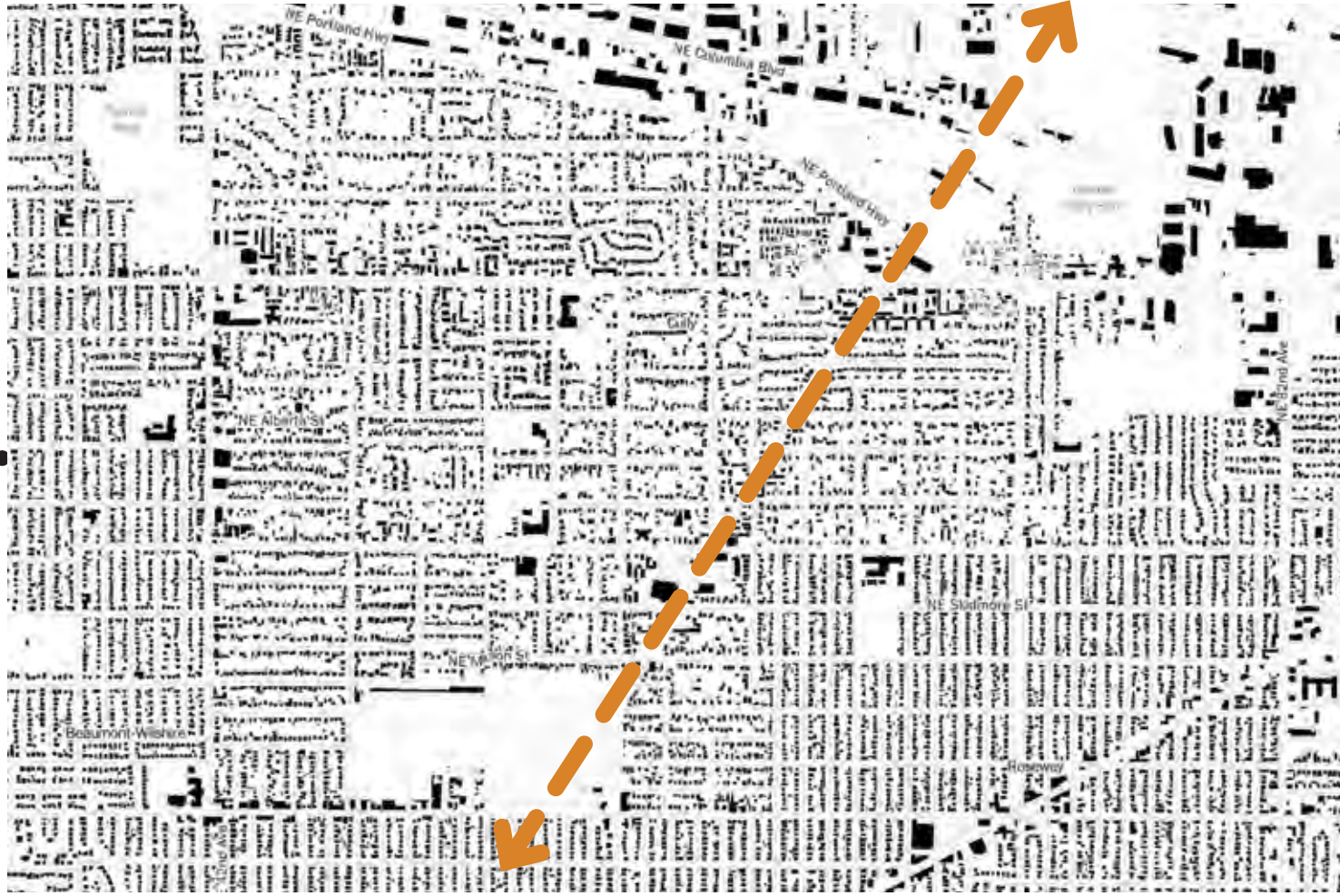


LEVEL 02 CORRIDOR SOUTH

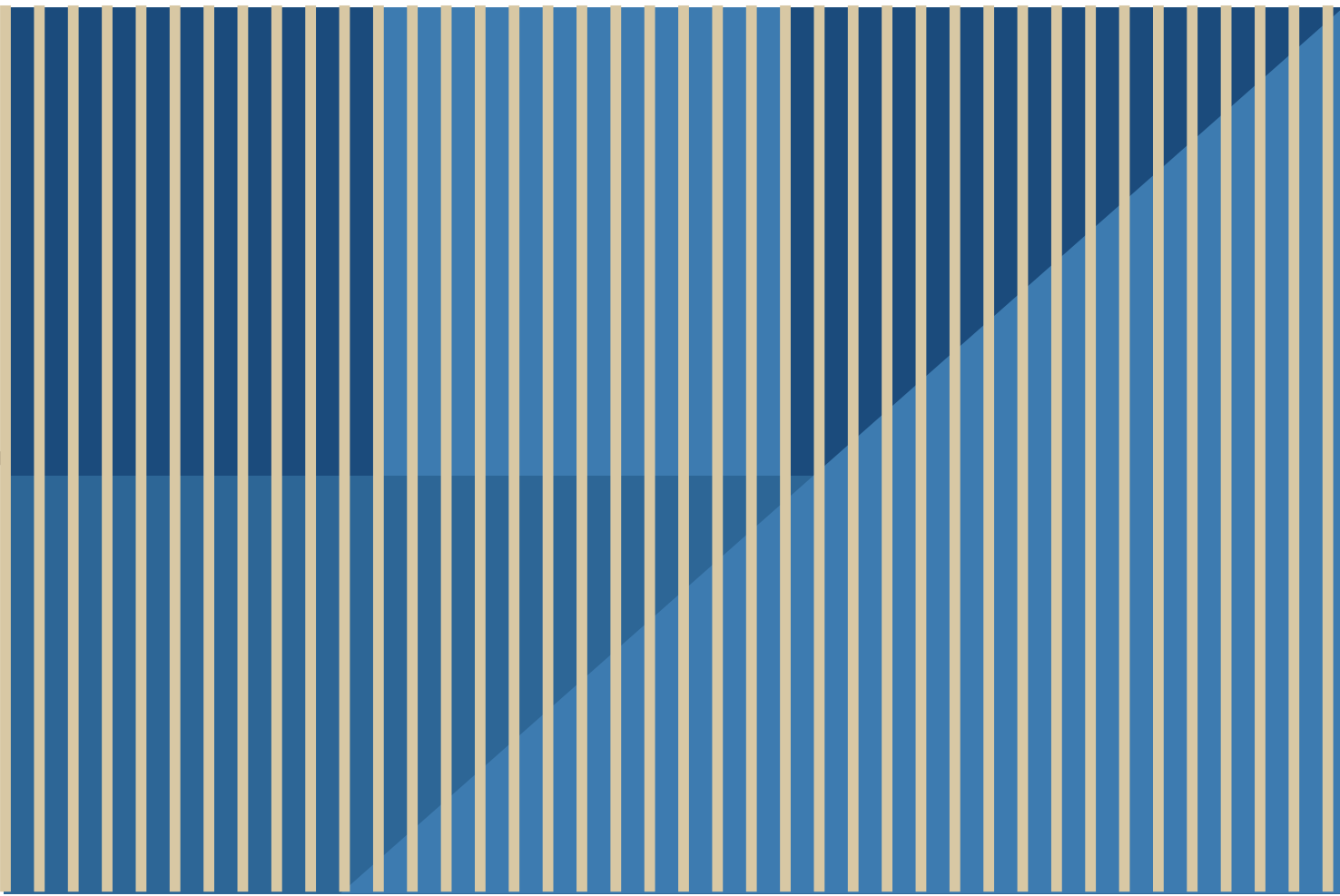
CONNECTIVE DESIGN ELEMENT FRONT OFFICE APPLICATION



CULLY BOULEVARD



CUTTING THROUGH GRID



COLOR BLOCKING + WOOD

WELCOMING THE COMMUNITY



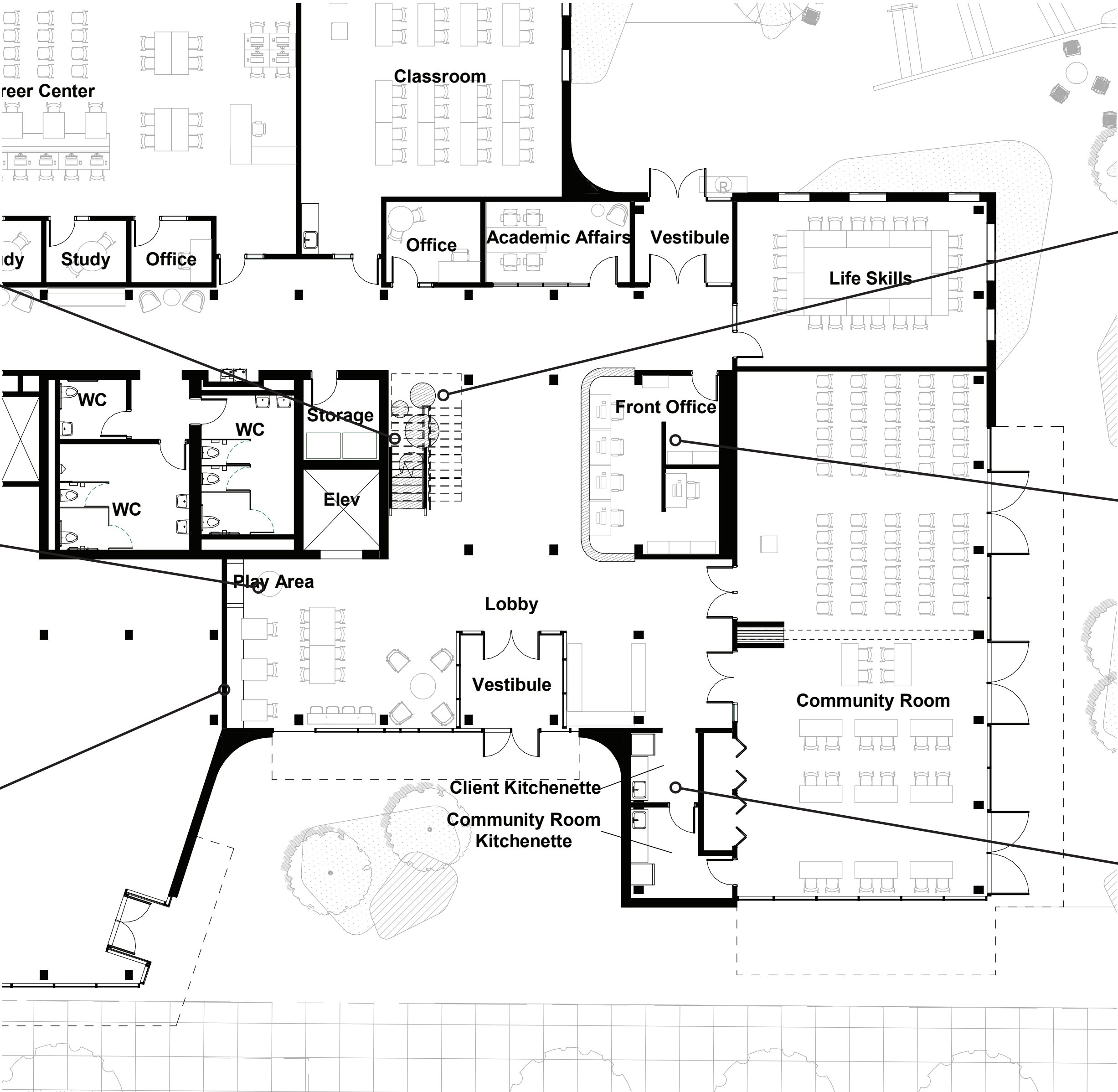
Mass Timber Stair



Play Area



Wall Mural



Seat Pods / Stairway Barriers



Lockable Storage



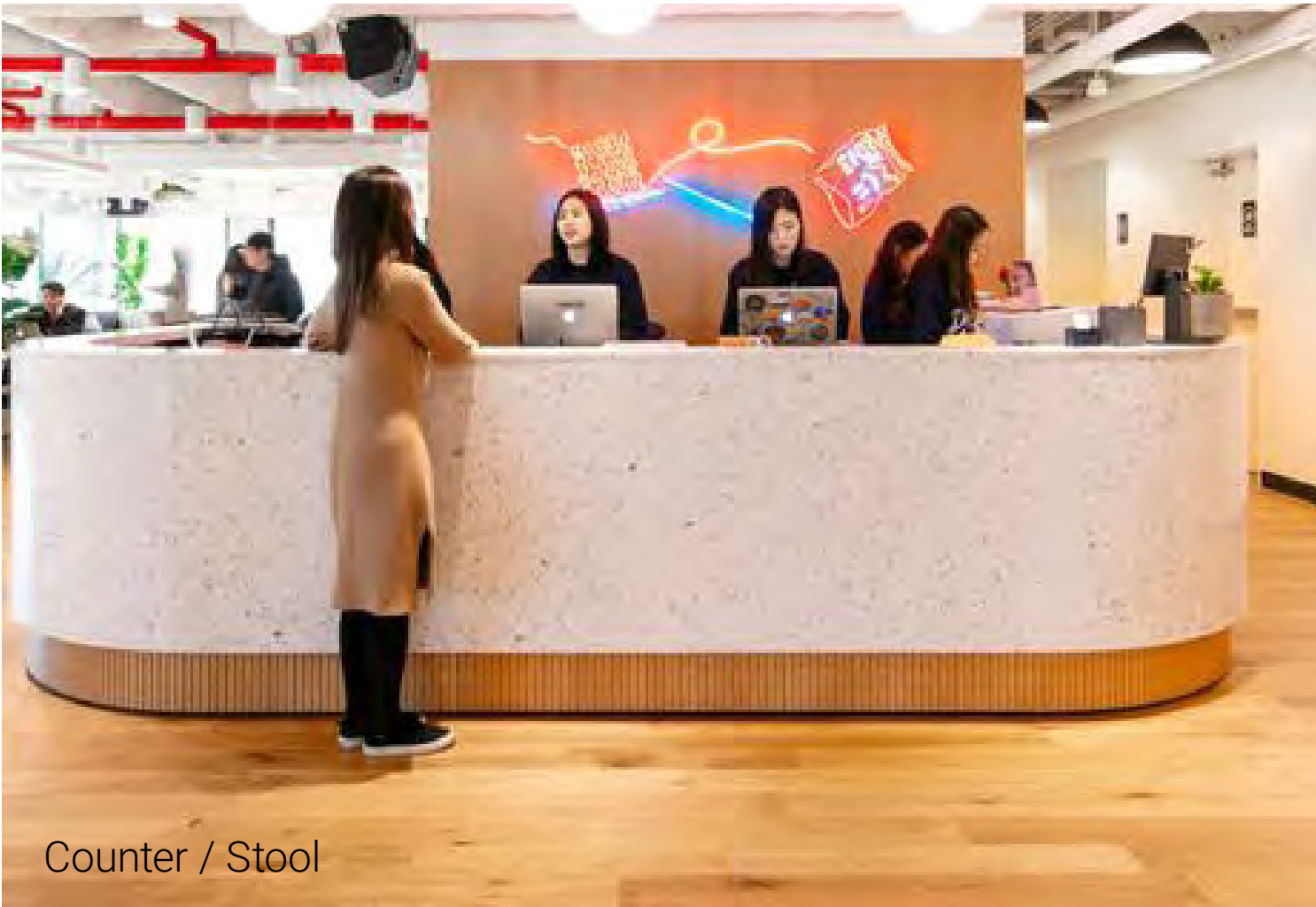
Client Kitchenette



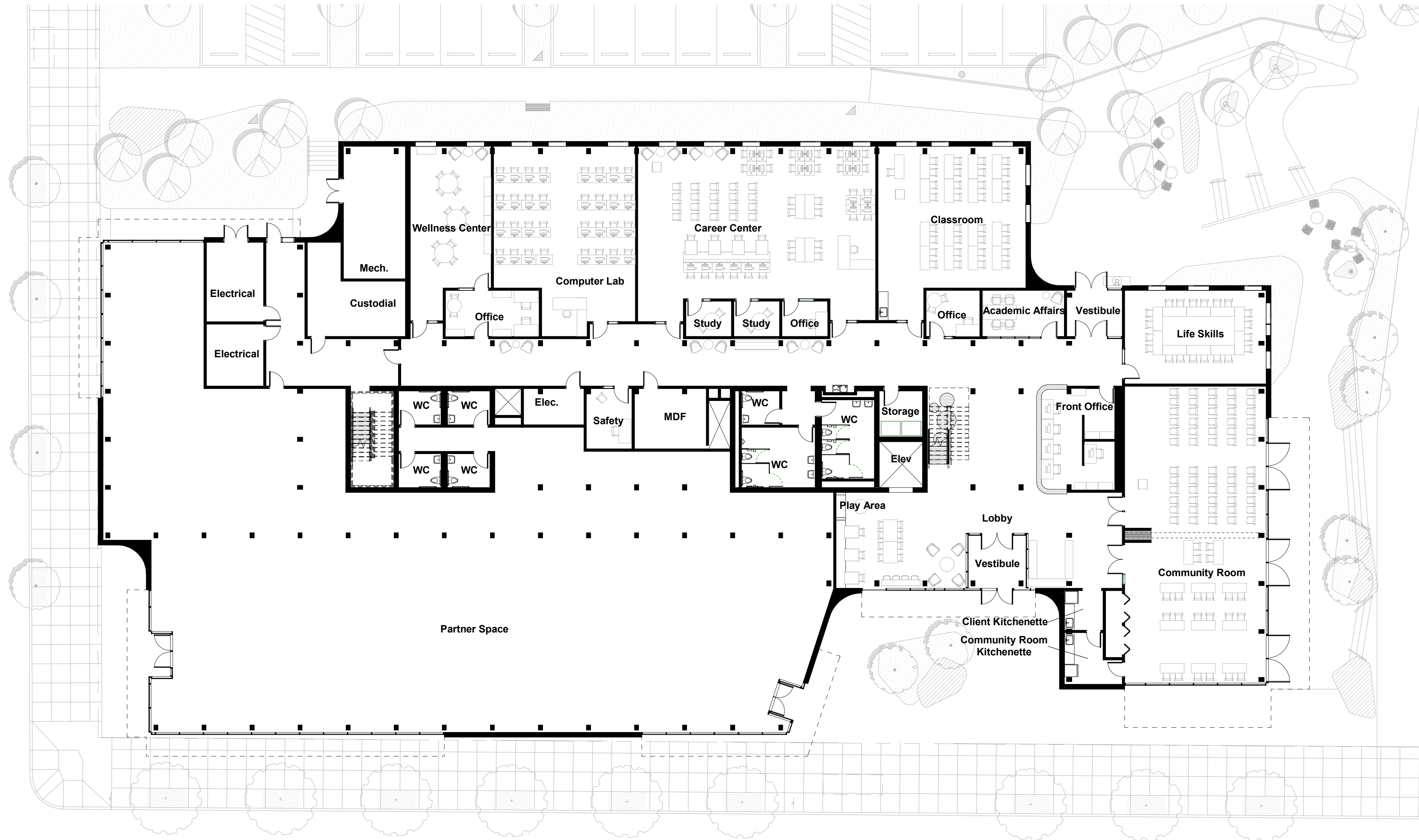




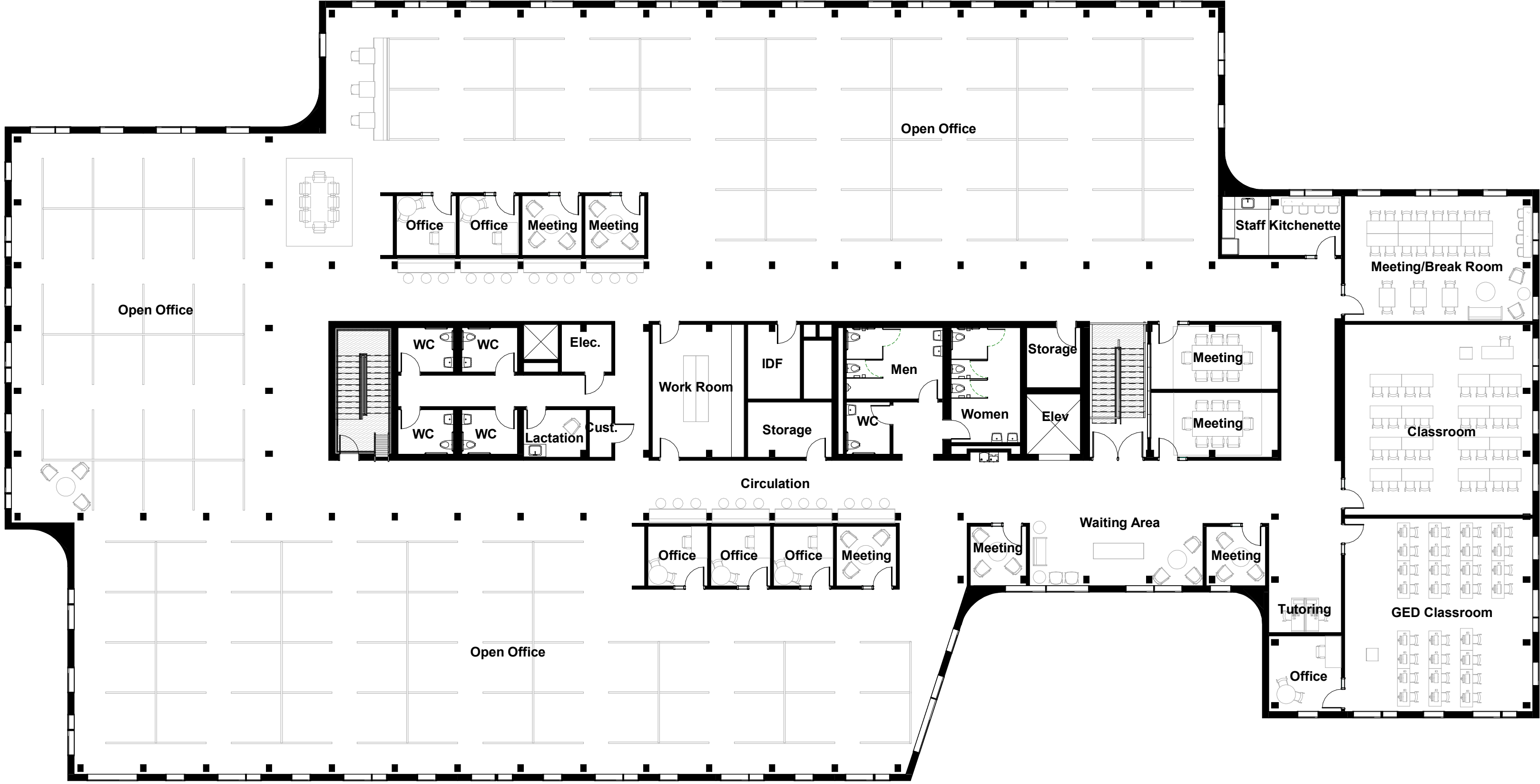
RECEPTION FIRST IMPRESSION



FIRST FLOOR PLAN

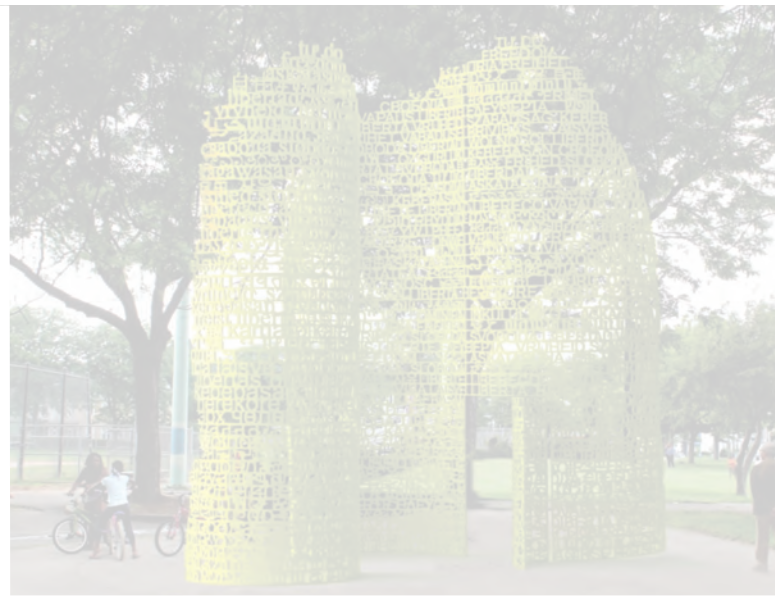


SECOND FLOOR PLAN

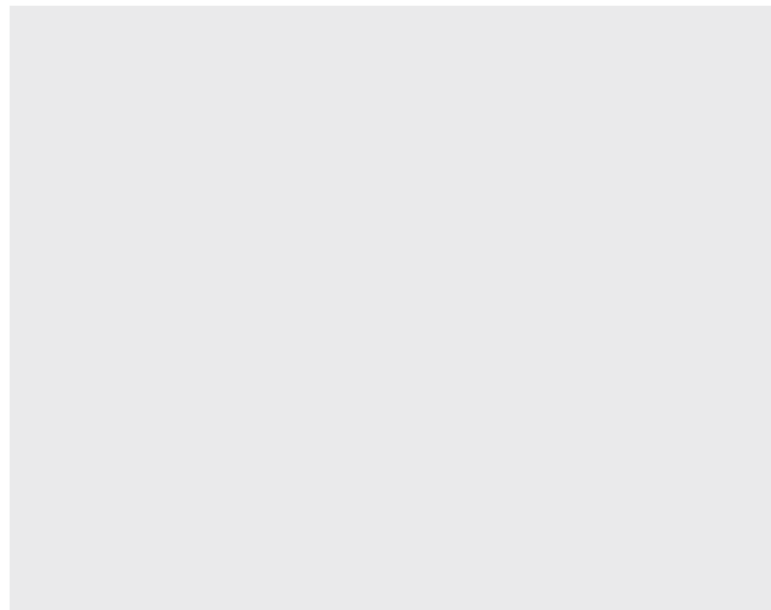
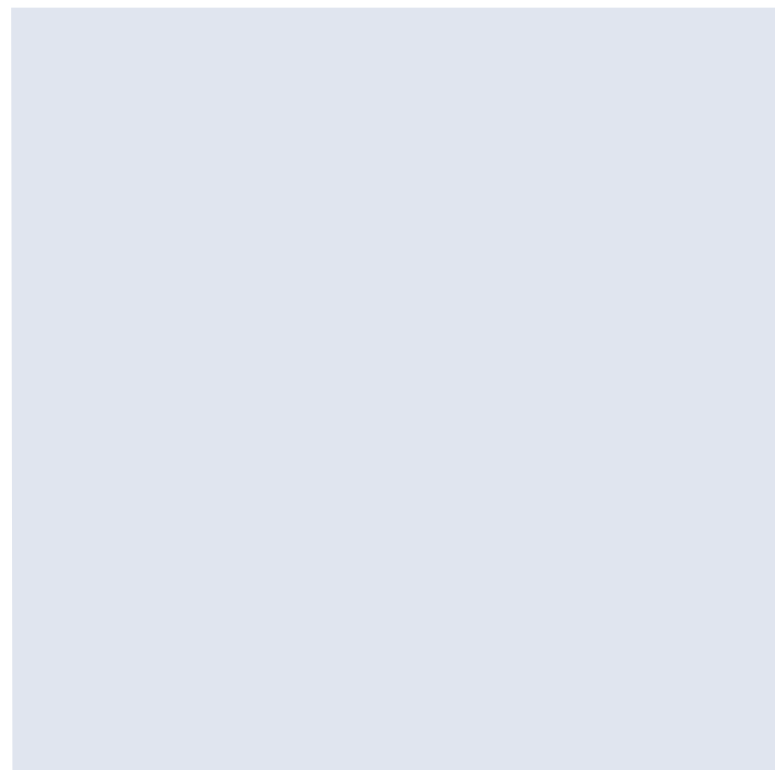
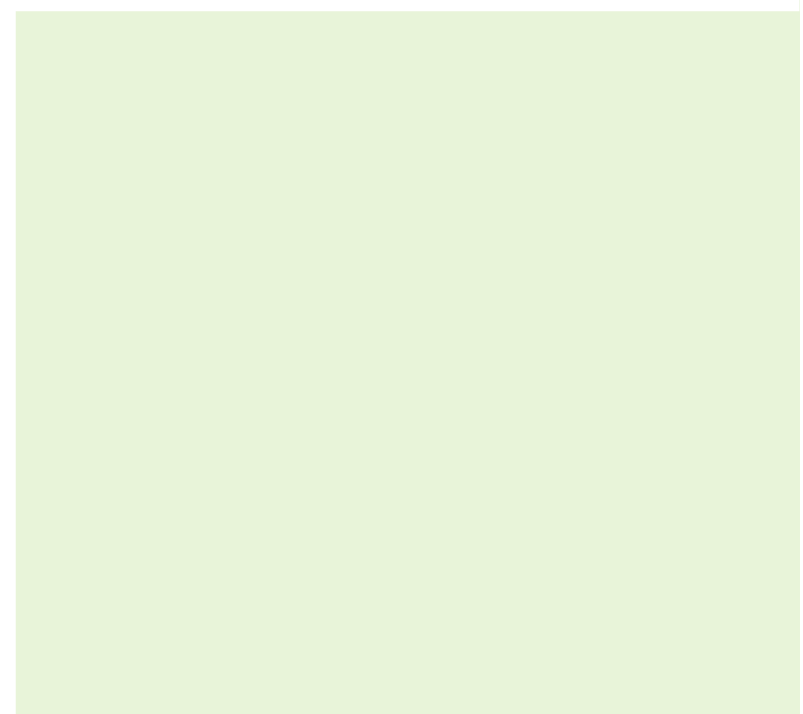


00:40

Site Design Elements / Design Justice



Outreach Summary + Spatial Implications



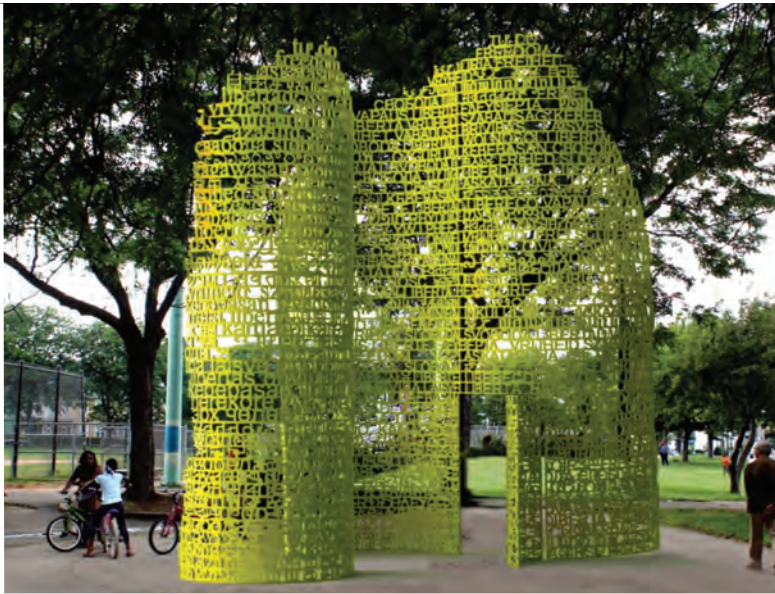


Community Spaces + Value

People valued outdoors activities and places, including parks, green space, gardens, and general outdoor areas. People also mentioned local services as being important to them, like grocery stores and libraries. Community events, meetings, and associations were consistently mentioned, as well as outdoor exercise such as walking and biking. Secondary themes include informal interactions with neighbors, community centers and spaces, and cafes.

Insights

People valued these space because of a general sense of gathering together to explore shared interest, building relationships and feeling connected to others. This is an admittedly broad category, but was a strong through line in the responses. Less common themes were knowledge-sharing & education and accessibility. Specifically, accessibility in terms of cost (free), proximity to home, safety, and ease of use. Minor themes noted personal well-being, diversity, and an appreciation for natural areas. People also felt a level of comfort, respect, safety, and relaxation when they were in community spaces. A few folks compared their feelings in these spaces to being around family.



Valued Spaces + Activities

Parks & gardens were mentioned the most in this question's responses. The second most common answer was connecting and engaging with fellow community members, either socially or through community organizations. People also noted that businesses, libraries, cultural events, and aspects of the walkability of their neighborhood (sidewalks, seeing people while walking) helped build community.

Desired Spaces + Activities

The main answer to this questions was a desire for community events and community spaces. Other answers covered a broad range of topics, including services such as health fairs, a pool, and a desire for greater social service visibility instead of community policing. Respondents also called for specific affinity spaces and events, such as a Native Student Center, PCC Powwow, and things in events and activities that draw Black people.



Race & Ethnicity

Twelve people answered this question, with a handful noting down more than one racial or ethnic identity. Five people identified as white, three people identified as Black or African American, one person as Asian American & Pacific Islander, one person as Southwest Asian & North African, one person as Native American and Sicilian, and one person as biracial Black and white.

Age

Most respondents were in their 50s and 60s.

Gender

Six respondents identified as female, five as male. Two respondents marked Other/Prefer not to Share. This question will be revised in future surveys to read "What is your gender?" followed by a short answer field, in order to avoid labeling non-binary and transgender people as "other."

Sexual Orientation

Seven respondents wrote down heterosexual or straight. One respondent wrote down gay, and one respondent wrote down bi.



Themes from respondents who identified as Black, African-American, or within the African Diaspora.

Themes that arose here included specific desire for spaces that drew Black people or were dedicated to Black art and culture. Gathering spaces were also frequently mentioned, and a desire for spaces for children, older folks, and multi-generational gatherings. Diversity was mentioned as a reason for a space being special, and church spaces were repeatedly noted as important spaces.

Themes from respondents who identified as having Asian or Pacific Islander heritage.

Only two respondents identified in this category, so any patterns identified here aren't strongly confirmed. The two respondents both mentioned social services as important, either generally or specifically "innovative housing/co-housing." Access to resources was also valued, as well as place that bring together shared interest.





Themes from respondents who identified as female.
Themes emerging here were strongly aligned with connection and relationship building. Throughout all the questions, relationships and connection-building were consistently mentioned as highly valued. Respondents also valued spaces dedicated to specific cultures as well as spaces where cultures could exchange.

Themes from respondents who identified as LGBTQIA+.
Only two respondents identified in this category, so any patterns identified here aren't strongly confirmed. Respondents noted feeling relaxed and safe in spaces of community, as well as feeling general positive feelings of happiness.

Spatial Implications
This collection of spatial implications is based upon the collective outreach done so far in the Metro Center design process, including meetings with DHS clients, Metro Center staff, outreach done by Living Cully, as well as the most recent survey hosted in the newspaper and online.

Community Spaces
This most recent survey specifically asked about spaces that made people feel like part of a community, and how those spaces did that, and it deepened themes we already had engaged with around community value and gathering space. Accessibility - including low-cost or free access and the proximity of the space to home was important. Spaces where people feel safe were raised as well. Metro Center spaces should be low-cost or free, easily usable, and make people feel welcomed and safe. Design practices such as hostile architecture and CPTED should be avoided, as those practices can create discomfort and stress for many users of the building.

Spaces for Black and Indigenous People
Multiple respondents requested spaces and programming that spoke to Black and Indigenous community members. These respondents' requests fit the form of gathering and events - this means we should continue to prioritize open and public spaces within the building that can be used for such functions. The project team should also consider dedicated spaces and regular events specifically for Black and Indigenous residents. An essential part of this is the programmatic considerations mentioned. While a space can be designed with outreach that prioritizes Indigenous and Black voices, ongoing programming and management that continues to speak to Indigenous and Black community members is an ongoing effort over the life of the building.

Green Spaces
Respondents continued to show love for green spaces and spending time in them. The Metro Center should continue to devote space to greenery, and make sure that these spaces are accessible to all, and remain as such.

Social Services
A theme emerging from the recent newspaper survey is a desire for social services being present within community spaces. These were sometimes defined as grocery stores, libraries, housing, and more. This suggests partnerships with libraries, grocery stores, food pantries, or community gardens to provide mutual-aid-style resources for folks looking for such services, and spaces that could function as such. One respondent specifically requested social services instead of community policing, suggesting we minimize or eliminate spaces dedicated to police in the Metro Center.

Community Access
A theme throughout all outreach so far has been how respondents' see themselves as part of a larger neighborhood and community, interconnected. This building must be built as part of that network if it is to succeed as a resource for people who live nearby. Ease of access into the building, open and free programming, and exterior features that welcome, rather than deter, interaction are vital to that mission.

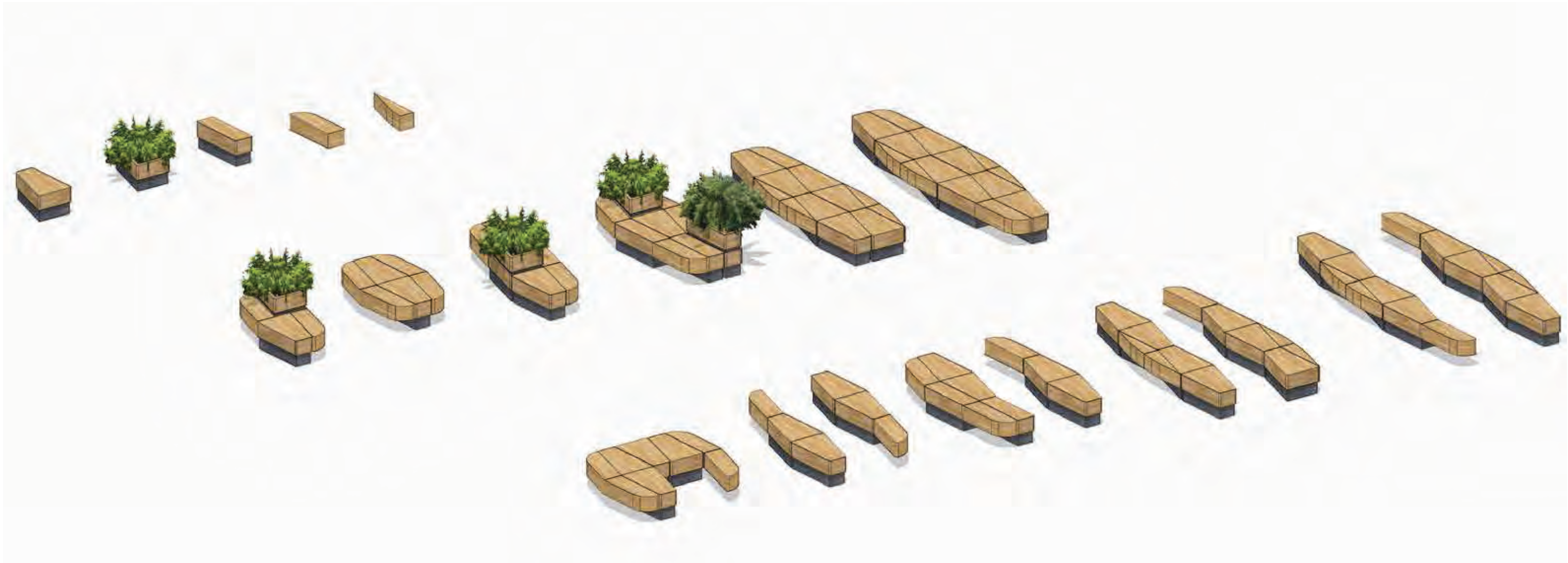
ASSEMBLY TYPES - KIT OF PARTS

We are proposing a modular element that can be expanded to many different opportunities for experience and interaction. These elements would be constructed from the off-product from the CLT process. We are proposing this scale as a opportunity to lean into a community driven process that is tactile and haptic. One that allows communities to engage in the development and have a hand in shaping of the space.

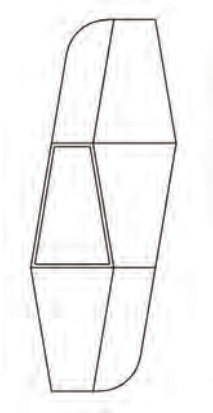
BASE ELEMENTS

CONFORMED ELEMENTS

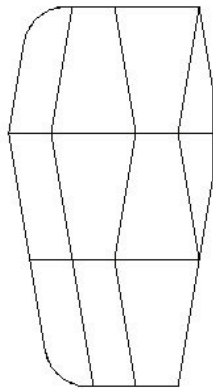
CONFORMED AND SEPARATED ELEMENTS



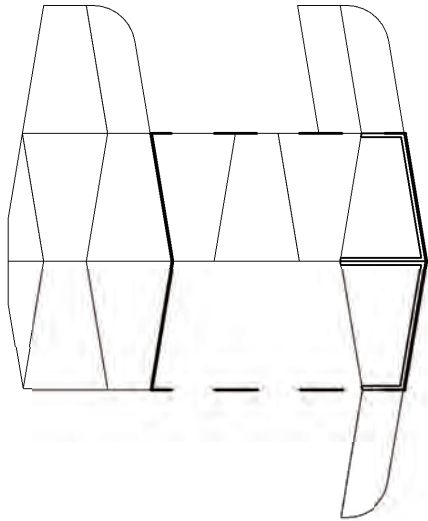
ASSEMBLY TYPES



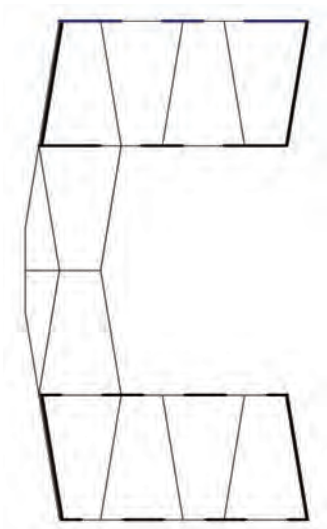
ASSEMBLY TYPES

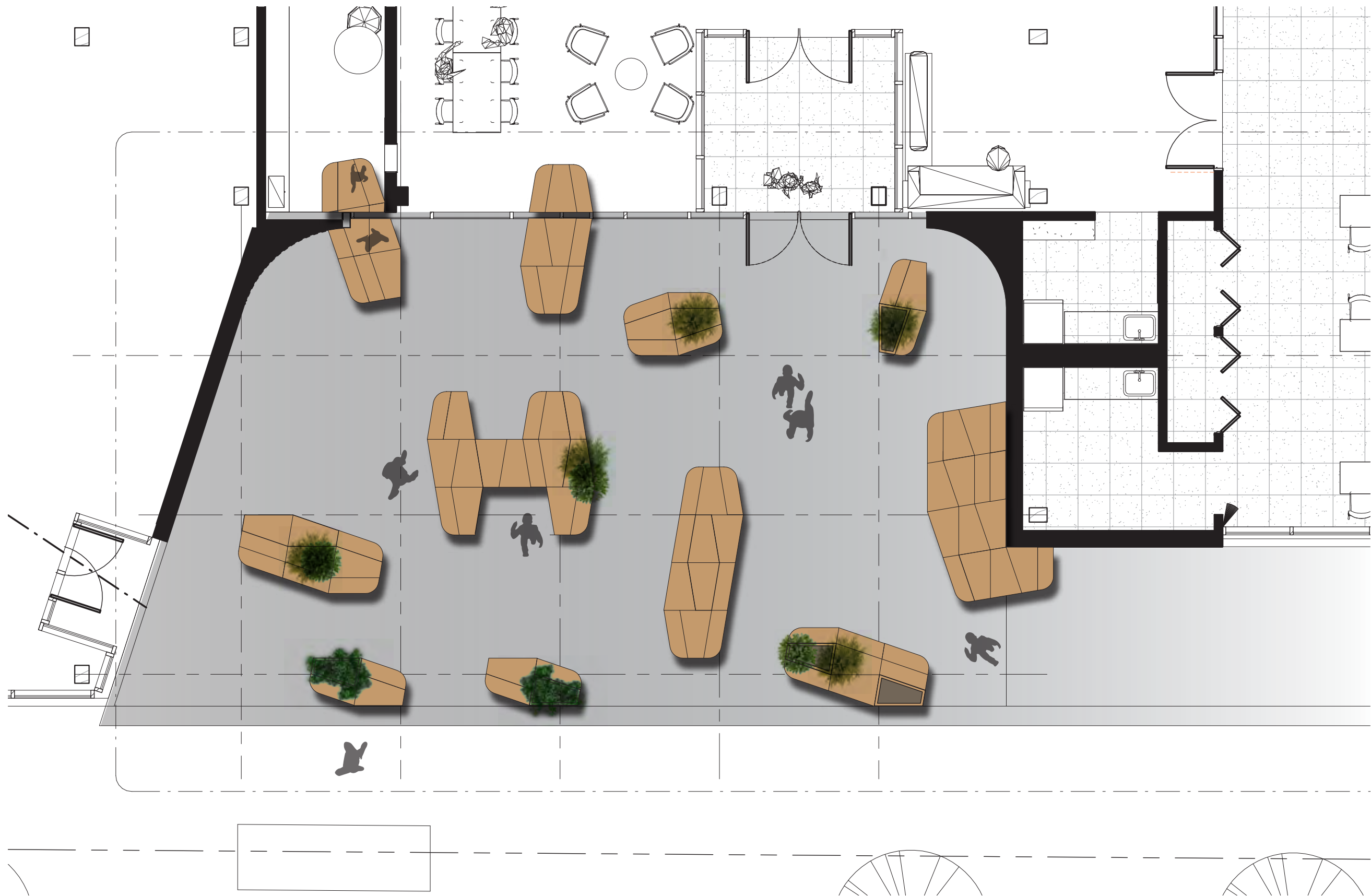


ASSEMBLY TYPES



ASSEMBLY TYPES





00:05

Break

00:20

Moment of Reflection

The new Opportunity Center embodies Portland Community College’s mission to strengthening the futures for their students and communities by:

INCLUSIVE DESIGN PROCESS

The staff, clients, students, partners, community, are engaged throughout the design process, guided by the principles of Critical Race Theory and Design Justice. Developed to expand representation at the table and elevate under-represented voices, the transformative process reflects larger narratives of place rather than individual stories. This inclusive approach strives to create a sense of agency in the design process, creating stronger ownership and building connections in the greater community.

COMMUNITY PLACE

The Opportunity Center – the building and its site - enlivens its neighborhood, supporting Cully and Concordia’s diverse array of residents and businesses. The project creates a humane, sustainable, safe urban place reflective and welcoming to its surrounding communities. The Opportunity Center serves as a beacon for PCC and its partners and adds to the physical and social fabric of NE Portland.

DESIGN FOR WELLBEING

The building is designed for wellbeing and belonging, with ample daylight and connections to nature and the outdoors. Designed using Trauma-Informed design principles, visitors and staff feel safe, grounded, and at ease. Avoiding the pitfalls of a sterile institutional image, it offers a unique sense of place, with a variety of spaces and a cohesive harmonious experience throughout. The Opportunity Center is a nurturing space, supporting personal and professional growth.

DESIGN FOR EQUITY AND JUSTICE

As an inclusive institution, the Opportunity Center is filled with positive and supportive space. The center strives to be a welcoming environment where all can feel valued, creative and inspired. The building recognizes and addresses past inequities and celebrates the diversity of its users, staff, and community – inclusive to families and children, and to people of all ages, gender identities, races, ethnicities, and abilities. Spaces are porous, accessible and easy to navigate, offering intuitive spatial organization and layering of spaces to give choices and variety from privacy to communal gatherings. The Opportunity Center will be a visible symbol of investment in the community without being a vehicle for displacement – it offers a sense of belonging and empowerment.

HIGHLY SUSTAINABLE

Aspiring to exceed its mandated LEED Silver certification, the Opportunity Center’s sustainable performance is achieved by making the best and most sustainable choices balancing economic, social, and environmental targets for site and building. The building is an example and teaching tool for sustainable building design, demonstrating the effective use of mass timber in construction and strategies for carbon reduction. The Opportunity Center is designed to be resilient, and to support effective long-term maintenance.

RESPONSIVE AND ADAPTABLE DESIGN

The Opportunity Center will be delivered on time and on budget, with flexible and adaptable spaces to serve the College well into the future. The building design will optimize PCC’s investment for the long term – supporting physical change over time to accommodate a broad range of workspace and teaching uses. The Opportunity Center will reflect stewardship of its public investment.

TEAMWORK & COLLABORATION

The design team is inclusive of the architect, owner, general contractor, consultants and trade partners, who work together in a transparent way to bring value to the project and the community. The team will collaborate closely with the neighboring housing project. PCC’s framework for decision-making will guide the team.

MOMENT OF REFLECTION

COMMUNITY PLACE

The Opportunity Center – the building and its site - enlivens its neighborhood, supporting Cully and Concordia's diverse array of residents and businesses. **The project creates a humane, sustainable, safe urban place reflective and welcoming to its surrounding communities.** The Opportunity Center serves as a beacon for PCC and its partners and adds to the physical and social fabric of NE Portland.



LET'S SPIN THE WHEEL OF NAMES!

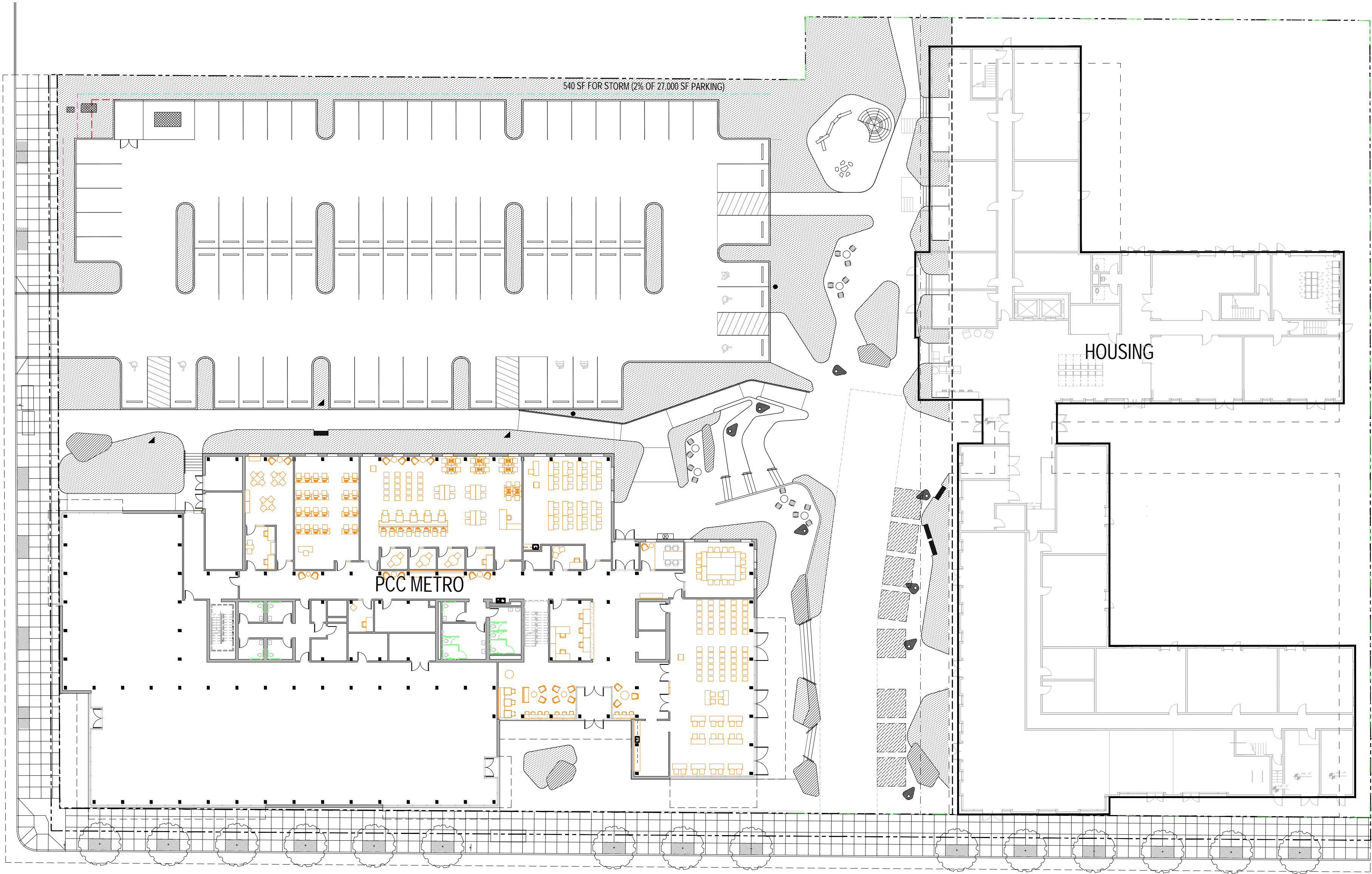


00:20

Project Updates

Next Steps

OVERALL SITE PLAN



PROJECT UPDATE

Construction

MEPF Trade Partner Selection + Award

Cost

Updating on Exterior Design

Facade Trade Partner Selection Process + Timeline

Schedule Update

Pending: FF&E and move in timelines for PCC + Flushing for LEED ???

Outreach Updates

Survey

TRACKING

Fiberglass windows. Keep entry doors and frame as aluminum.

Next Action: Meeting 9/29 2pm

Mass Notification System/ Blue Light Security Kiosk/ Extended Wifi / Energy Dashboard/
Aluminum feeders for 100A/ Lighting control/ Wireless control

Next Action: Set up meeting to discuss with Debra Jarcho

Sound masking system / Operable window actuators specs

Next Action: Bora to research and provide specs/info for review

Mechanical system options VRF vs Hydronic

Next Action: Decision needed by mid October with Mechanical Sub input once on board

Eliminate slab at partner space / Provide gravel only.

Next Action: PCC

NEXT STEPS

10/02 Staff Brunch + Learn

10/07 DHS Participants

10/12 OAC

10/15 PCC Board Meeting

TBD Site Accessibility / Universal Design Meeting

TBD October: DHS Participants, Living Cully, Neighborhood Meetings, 42nd Ave

Training

10/01 Design Justice Training

10/9 Confirm: Andersen Mass Timber Detail Optimization Workshop

10/19-29 CRT Training for Andersen

10/23 DISC training

THANK YOU

Date
09.28.2020

By
Becca Cavell and Emily Haydeb

Subject
OAC Meeting
Design Development Meeting 5

Project Name
PCC Opportunity Center

Project Number
19016

Present

Rebecca Ocken
Dusty Hoerz
Linda Degman
Krista Phillips
John MacLean
Gina Valencia
Sherry Durfey
Pam Hester
Jeff Slinger

Sam Stadler
Trudy Jacobs
Bryan Lee
Elizabeth Chen
John Ludlam
Jody Giffin
Amy Donohue
Jeanie Lai
Isaac Adams

Amy Maras
Sarah Oeftering
Emily Hayden
Charlie Brucker
Julie Livingston

Distribution
Those invited / present

Bora File

Minutes

1. INTRODUCTIONS AND AGENDA REVIEW

- A. Jeanie reviewed the agenda

2. BUILDING DESIGN UPDATE

- A. Jeanie noted that great info was received from this group at the last OAC. Today the team will focus on the interior.

1. Excited that wood has become a central design concept, beyond simply mass timber structure
2. Wood will tie the whole building together - reminder of earlier slides about the site, its history, indigenous architecture (plank houses) as well as the tangible sustainability benefit of using wood in construction.
3. Team is looking at adding wood at the exterior, helping focus the entries and signal warmth/welcome.
4. Also, biophilia, beauty and trauma informed design

- B. Floor plans

1. Amy Maras presented the interior, and a reminder of what has been shared before.

2. Now, focusing on the natural material properties as well as the elements of the neighborhood which add distinctive elements such as diversity, color, texture and pattern.
 3. This can become a dynamic combination
 4. Amy presented a “connective design element” that will begin to unite all parts of the building
 5. The front office is conceived as a true connection to the neighborhood
 6. “Native Forest” concept
 7. “Cully Boulevard” concept
 8. Taking the simple color blocking and making it denser as you move away from the core to signify a denser forest
 9. The core is planned to be formed concrete with some texture from the mass timber forms
- C. Lobby / front office
1. A distinguishing aspect of the neighborhood is how Cully Blvd cuts through the regular grid – a vestige from the agricultural history of the area
 2. Bora has developed a simple color block that references this diagonal line
 3. Emily shared an enlarged plan that shows the updated lobby plan with an east-side front office, with a series of notes regarding each of the key components of the design.
 - a. Mural opportunity at play area – visible from the exterior
 - b. Client kitchenette connected with a door to another kitchen space that supports the community room
 4. Jeanie notes the floor plans have been updated to reflect the curves shown at the last OAC
 5. Emily shared a series of interior views and highlighted a series of key topics
 6. Reception Desk
 - a. Utilizes furniture solution
 - b. What is the first impression for first time visitors?
 - c. ADA height entirely, or a variety?
 - d. Also need to consider technology
- D. Discussion
1. Linda: how will reception desk accommodate ADA? Jeanie: entire counter is the lower height right now.
 2. Linda: when did we change from 2 to four folks? Looks tight for workstations. Jeanie: folks won't be at the front all the time
 - a. Pam: Fadwa thinks 2 PCC folks should be at the front desk but Pam believes it should be OK to have just one
 - b. Linda: should be able to accommodate sit-to-stand; concern that these are not large enough to be full time workstation
 - c. Jeanie: Willowcreek example; staff will have lockers; Fadwa's office is adjacent
 3. Krista wonders if the entire component could be mobile to support future reconfiguration. Linda is often concerned about built-ins. The entire transaction counter area could be furniture. Jeanie: team will study this
 4. Jody supports the desk component being a kit of parts / less permanent as things change
 - a. Answer Centers designed in last bond aren't functioning as designed
 - b. Would like more flexibility with front desks
 5. Krista asked if seat pods below stairs would be fixed / built-in; what materials?
 - a. Jeanie: yes, fixed. Detail TBD but team would like more color in addition to wood – concept would be very playful
 6. Trudy encourages the team to detail the wood to protect it from foot damage
 7. Rebecca: how would you repaint with the wood slats?
 - a. Jeanie – the wood slats would be modular and would be panelized but would need to be removed to repaint.

- b. Dusty is happy to help develop details when the team is at that point.
- 8. Gina: compared to the existing Metro Center this is a great landing place – folks arrive for the very first time and will know where to go. Also, we now have a kitchenette for the clients that they feel welcome to use without being in somewhere else's space. Worries about kitchen for community room – does it have enough space?
 - a. Jeanie: team / PCC should review these spaces together to ensure they each have adequate space
- 9. Dusty worries about a clash zone at the elevator – perhaps change the play area position to avoid conflict
- 10. Pam: loves the interior design proposal - the color, the Cully reference. Very welcoming.
- 11. Pam: the front desk will need to welcome MANY first-time visitors – a first college experience. Modular, flexible approach is good but this will be heavily used, more so than other college desks
- 12. John: will there be more service animals than typical PCC front desks?
 - a. Pam – probably not.
- E. Floor Plan Updates
 - 1. Working to adjust proportion of some rooms, and adjust the core configuration to allocate more space to the Partner – Bora will recalculate the Partner space
 - a. Krista is concerned that a future connection is possible between partner space and PCC. Jeanie: the Safety Office provides this connection
 - 2. All curves shown, and entry locations proposed.

3. SITE DESIGN ELEMENTS

A.

4. DESIGN JUSTICE

- A. Bryan's team has reviewed the Spatial Implications of the designs in the context of what has been heard from the community
- B. How do we make an opportunity for folks to engage in the design
- C. Outreach summary: a recap of the newspaper survey and how we might integrate this moving forward:
 - 1. Folks really value community spaces. See summary in Colloquate slide. Folks want to gather, make social connections, share knowledge. Education and accessibility are important.
 - 2. Activities
 - 3. What would people like to see in the future? Community spaces, social services rather than community policy; affinity spaces
- D. John quickly reported on demographics of survey respondents and noted that this question will be simplified in the next round of the questionnaire.
- E. Social services have emerged as a strong theme – grocery stores, housing, libraries.
 - 1. Can Metro Center partner with these sorts of partners?
 - 2. Specific request to not have police space in the building
 - 3. Ease of access is important
- F. Elizabeth introduced the concept of proving a kit of parts that can be aggregated to create seating, planters, communal gathering spaces
 - 1. Bryan – the team has been looking at the CLT process to see if anything can be used from the manufacturing process
 - 2. Sam: Andersen has been looking at this; the mill and the cutting facility [Cut My Timber]; does wonder if an extra panel is booked for the project. There will be a treatment component due to exterior installation but seems achievable.
- G. Elizabeth showed some possible assembly types that work with the modular approach – a seating component, a play area.

- H. Very interested in a “soundscape” program and other opportunities to collect and share community input
- I. Could be air quality monitoring stations, or bike repair station with tools on cables for public use
- J. Vertical elements can introduce shade and other elements [books/community library? Other]
- K. Bryan showed a possible series of these pods that might populate the entry court from Killingsworth
 - 1. Supporting a clear pathway to the doors
 - 2. Indoor/outdoor connections in two places including the play area
 - 3. Possible stage/ serving window at community room kitchen

5. MOMENT OF REFLECTION

- A. Krista was picked
- B. Jeanie reviewed guiding principles – focus on ‘community place’
- C. Is the current design doing enough to welcome the community into the building/site?
 - 1. Krista thinks the level of investigation and engagement seems to be working and connecting to the design outcomes
 - 2. Krista is interested to see how the design relates to the human/individual scale – it’s nice to see the ideas being interpreted at a more intimate scale
 - 3. Are the pods mobile?
 - a. Colloqate says they are likely too heavy to be moved frequently
 - b. If they could be mobile, it would allow for more flexibility and unpredictability
 - c. Jeanie notes that we could have larger fixed modules, and smaller ones in the same language that could be mobile and personalized by the community
 - d. People could move modules into the sun when it’s cold out or move under the canopies – maximize outdoor comfort
 - 4. The pods relate to the overall concept, especially with wood at every scale
 - 5. Layered uses and modular pieces are really interesting and supportive of different community events – allows for spontaneity and individualized uses, the community can make them their own
 - 6. Krista wonders about maintenance and durability
- D. Amy D and Sam wonder if these will occur at other areas on site, will they wrap around into the plaza?
 - 1. Colloqate notes that they do reflect the site design language established by Place, but could also occur at other areas on the site
- E. Let’s look at ideas to integrate site lighting into this concept
 - 1. Would solar powered lighting be possible?
- F. Could community be involved in the design of the pods?
- G. Rebecca O notes that it’s hard to know what is welcoming to some people and not to others – community input would help us know what people want
- H. Need to make sure this area is easily navigable for a wheelchair user and companion moving side by side
- I. “Not just a bench” – specific activities and interactions associated with different modules and shapes
- J. Potential partnerships – library, food bank, Cully Air, bike repair kits, etc.
 - 1. Opportunity to include Home Forward in this area – create an environment where people can interact with partners casually
 - 2. “Common ground”
- K. Gina likes that the pods are playful for all ages, combination of recreation, relaxation, information. Would be nice to have something like this for smaller children further away from the street

BORA

-
- L. How do we measure the perception of these spaces by the community? How do we identify/define the success of our efforts?
 - M. Good continuity between interior and exterior spaces – extending the courtyard into the building, bringing the lobby out into the courtyard
 - N. Dusty is not clear on the intended use of the modular seating at the Killingsworth entry. Social Interaction of adult clients / users?

6. PROJECT UPDATE

- A. North piece of Hacker building is shifting west – coordination in progress
- B. MEP trade partners have been selected
- C. Next round of trade partners will be façade – in about a month or so. Similar process as MEP partner selection
- D. Schedule update – Andersen got the information they needed from PCC/Bora, update should be available by next OAC meeting
- E. Next OAC will focus on exterior development
- F. Upcoming meetings – Staff Brunch & Learn, DHS participant meeting
- G. Upcoming trainings – DJ, CRT, DISC

ZOOM CHAT RECORD

13:22:31 From Linda Degman : How will this accommodate ADA?

13:23:58 From Krista Phillips : This interior form as a built in is very specialized as a transactional space. Why not do away with the lower portion to keep it most flexible?

13:59:22 From Emily Hayden (she/her) : Thanks for sharing all this!

14:01:13 From Jeanie Lai (she/her) : Thanks John for the great summary!

14:51:46 From Dusty Hoerz : my internet connection is in and out, so I am leaving a few comments here 1) I am not clear on the intended use of the modular seating at the Killingsworth entry. Social Interaction of adult clients / users? 2) how does the purpose of

14:54:32 From Dusty Hoerz : 2) how does the purpose of the Entrance interaction play off of or into the common courtyard to the North East?

3) I have concerns for the density of the seating and it's close proximity to vehicular traffic on Killingsworth?

14:55:14 From Emily Hayden (she/her) : Thanks Dusty - all the chat comments will be incorporated into the notes.

14:55:54 From Dusty Hoerz : 4) safety concerns for the Entry Seating becoming a jungle gym which brings additional small people safety concerns.

14:56:04 From Krista Phillips : Is there a way to push the PCC building northward, even if 5-6 feet, to gain more plaza/open space along Killingsworth? I feel like we should consider if possible.

14:56:44 From Pam Hester : I have to jump into another meeting. Thanks everyone. It's looking terrific!

14:56:50 From Emily Hayden (she/her) : Thanks Pam!

15:01:07 From Sam Stadler : thank you all, I have to hop off into a 3pm!

15:03:02 From Krista Phillips : Will we have Functional Teams forming sometime soon?

END OF MEETING NOTES