

Rock Creek
Bond Internal Steering Committee Meeting # 63
May 22, 2017

In Attendance: Janis Nichols, Ginger Smith, Mitch Kilgore, Matthew Altman, Ryan Aeillo, Terry Lookabill, Phyllis Petteys, Karen Sanders, Ivan Hernandez (ASPCC), Tony Ichsan, Kathy McMullen, Cau Chan (Bond), Zahava Jones (Bond), Lisa McClellan (Scott Edwards Architects), Jennifer Hamlin (Notes)
Chair: Sandra Fowler-Hill

I. BISC Notes from January 2017 Approved

II. **Project Updates**

a. **Signage**

1. **Building 2, 3 & 9:** Additional signage just installed. For most part all interior signage is installed except for HEP/CAMP signs and PACTEC sign (mistakes are being corrected). Campus decided not to add an interior sign for Counseling & Disability Services (one outside of door exists).
2. **Exterior Wayfinding** (pedestrian and vehicular): The plan is to have signs completed and installed by Fall term.
3. **Entry Monument Sign:** Entry signs have been put on hold, for the time being, pending review of the campus entry location.
 - a. The potential to move the entrance in order to line up with 178th Avenue and have a light & crosswalk put in is under discussion between the college and the county.
4. Please see pages 3 - 5 for signage details.

b. **Kiln Equipment Installation:** Bond and Art department have procured all necessary equipment. They will be installing 2 kilns and 1 melter.

1. Permit is ready for pick-up and payment.
2. Fortis will begin getting construction team in-line. Some lighting changes will be made to the structure while installation is being completed.
3. At this same time a wall washer will be installed in the Printmaking classroom in B3.
4. Project to be completed by August 2017 in order for faculty to test equipment prior to Fall term.

c. **Farm, BCT, Vet-Tech:**

1. New barn is up. New shop, cattle handling facility and new BCT restroom are complete.
2. Terry's house is moving forward and should be completed by July 2017: (tresses are up), getting walls, windows, doors & electrical work, picking paint, etc.
3. Curbing on cattle handling will go in this summer. Barn gutters may end up getting tied into the storm drain.
4. Bond is working with FMS to figure out getting fire sprinklers in Vet-Tech building. Voice speaker system for B4 & Vet-Tech is likely going to be installed this summer.

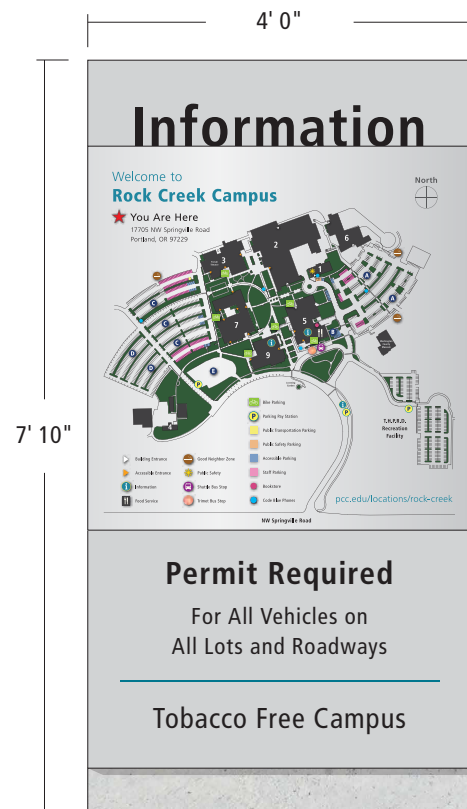
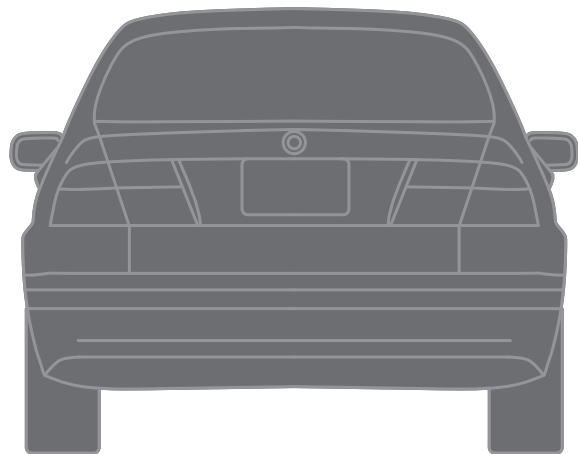
d. **Childcare Center & Childcare Provider RFI:** Leadership looked at multiple locations on campus. Final destination was decided on and landed just south of

Washington County Museum location on campus. Upon review of current plan and taking SE campus child care center input into consideration it was decided that the initial design for RC was a bit too small & required an infant room. A new layout was presented today. See page 6 for details.

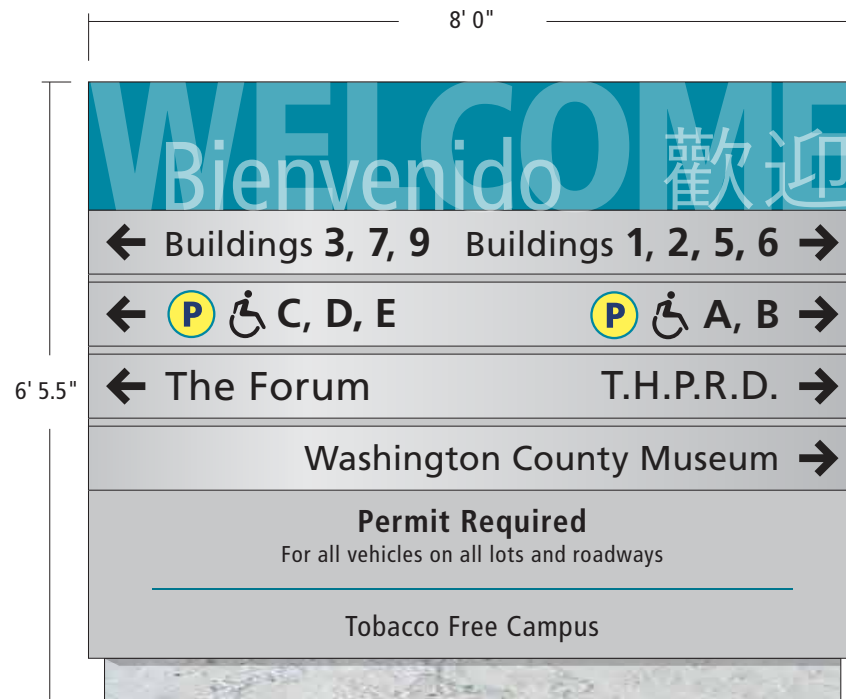
1. Expected to be approx. 7,750 SF ADA accessible facility
2. Will include secured entrance/check-in area, lobby with reception, director's office, staff area & conference room, 2 preschooler classrooms (20 kids/room; 1 staff/10 children), 1 toddler classroom (16 kids; 1 staff/8 children), infant room (8 infants), indoor motor-skills play area and an outdoor, fenced-in, covered play area. Potential for small outdoor garden is being discussed.
3. Some parking spots in THPRD lot will be assigned as short-term drop-off/pick-up parking spots.
4. Ground breaking, mid-construction and Grand Opening events will occur throughout the process.
5. Center expected to open for business in September 2018.

III. Announcements:

- a. Bond staff will be doing presentations to campuses to inform on new upcoming projects if/when next Bond passes. RC projects will be the Childcare Center and turning the Event lot into a paved parking lot.
- b. **Dream** Center Project proposal will be presented at next Board meeting.
- c. **Fortis** lot plan is currently up in the air. It was never intended to be permanent but we are looking into extending the permit and, if possible, may use it as a temporary location for the Veterans Resource Center, provided minor upgrades could be made. Otherwise it will be sold and removed.
- d. **This will be our last BISC meeting.** Since projects are at a close there is no longer a need to meet to help steer decisions. Thanks to everyone for your participation, dedication, and input over the years to help get our campus to project completion!



Sign Type EC-3
Welcome Map



Sign Type ED-1
Welcome / Vehicular Directional



Sign Type ED-2
Vehicular Directional



ANDERSON KRYGIER, INC.

106 RIVERSTONE BLDG
820 NW TWELFTH AVE
PORTLAND, OR 97209
PHONE 503-243-2060

This drawing and other drawings produced for this project are considered intent drawings. Some interpretation may be necessary in order to fabricate a finished product. Refer to specifications. Fabricator accepts the responsibility for materials, fabrication, engineering and installation. Colors are shown for reference only, and are subject to the limitations of the printing process. All photographs and scaled figures shown are for reference only, and do not necessarily reflect actual site conditions. Locations shown are approximate. Final location to be determined in the field. Messages shown in drawings are for reference only. Refer to Message Schedule for actual message.



ROCK CREEK CAMPUS
Exterior Masterplan
REVISED

Scale: 1/2" = 1'-0"
(except as noted)

AT-A-GLANCE

Vehicular Wayfinding

Page A.1

March 2017



ANDERSON KRYGIER, INC.

106 RIVERSTONE BLDG
820 NW TWELFTH AVE
PORTLAND, OR 97209
PHONE 503-243-2060

This drawing and other drawings produced for this project are considered intent drawings. Some interpretation may be necessary in order to fabricate a finished product. Refer to specifications. Fabricator accepts the responsibility for materials, fabrication, engineering and installation. Colors are shown for reference only, and are subject to the limitations of the printing process. All photographs and scaled figures shown are for reference only, and do not necessarily reflect actual site conditions. Locations shown are approximate. Final location to be determined in the field. Messages shown in drawings are for reference only. Refer to Message Schedule for actual message.



ROCK CREEK CAMPUS

Exterior Masterplan REVISED

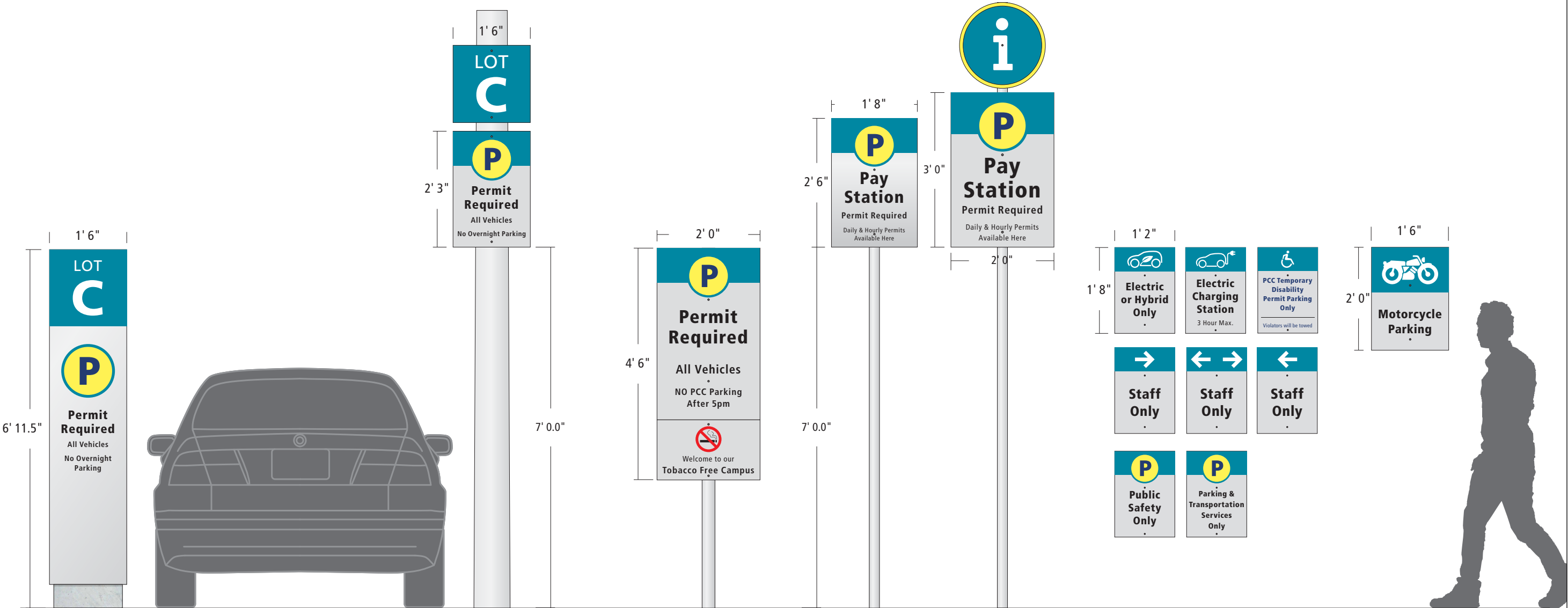
Scale: 1/2" = 1'-0"
(except as noted)

AT-A-GLANCE

Pay Station & Parking

Page A.2

March 2017



Sign Type EL-1
Parking ID



Sign Type EP-1 & EP-2
Parking ID
Permit Required ID



Sign Type EP-4
Permit Required ID



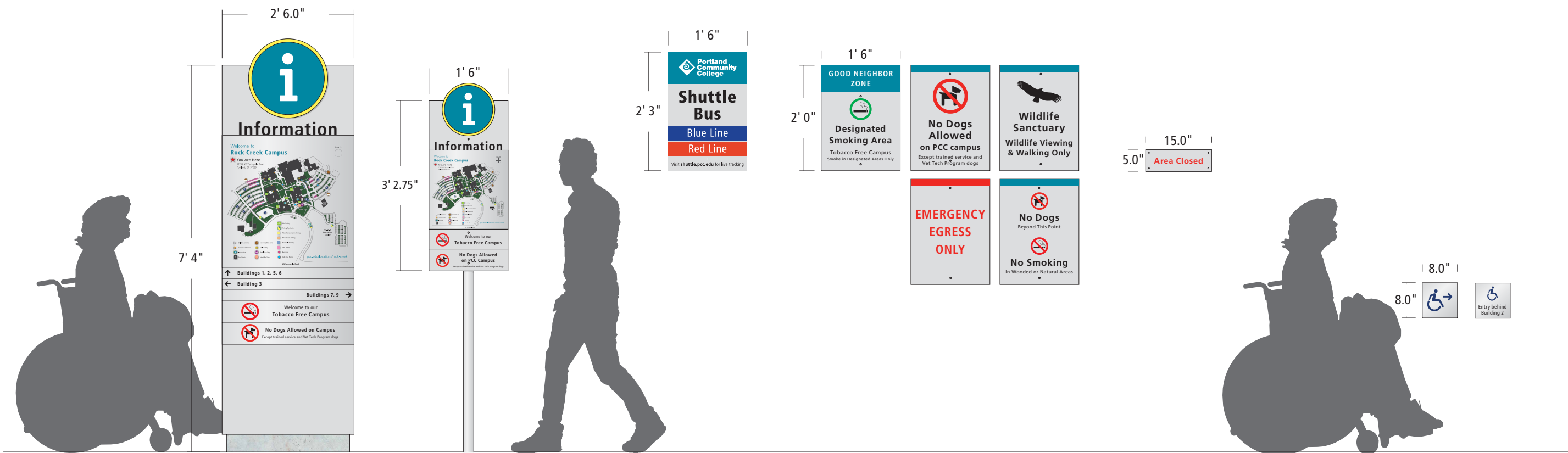
Sign Type EP-3 & EP-6
Pay Station ID
Information Symbol



Sign Type ES-1
Parking Space ID



Sign Type ES-2
Parking Space ID



Sign Type EC-1
Large
Pedestrian Wayfinding

Sign Type EC-2
Small
Pedestrian Wayfinding

Sign Type EP-5
Shuttle Bus ID

Sign Type ER-1
Regulatory

Sign Type ER-2
Regulatory

Sign Type ET-1
Accessible Path
Directional



ANDERSON KRYGIER, INC.

106 RIVERSTONE BLDG
820 NW TWELFTH AVE
PORTLAND, OR 97209
PHONE 503-243-2060

This drawing and other drawings produced for this project are considered intent drawings. Some interpretation may be necessary in order to fabricate a finished product. Refer to specifications. Fabricator accepts the responsibility for materials, fabrication, engineering and installation. Colors are shown for reference only, and are subject to the limitations of the printing process. All photographs and scaled figures shown are for reference only, and do not necessarily reflect actual site conditions. Locations shown are approximate. Final location to be determined in the field. Messages shown in drawings are for reference only. Refer to Message Schedule for actual message.



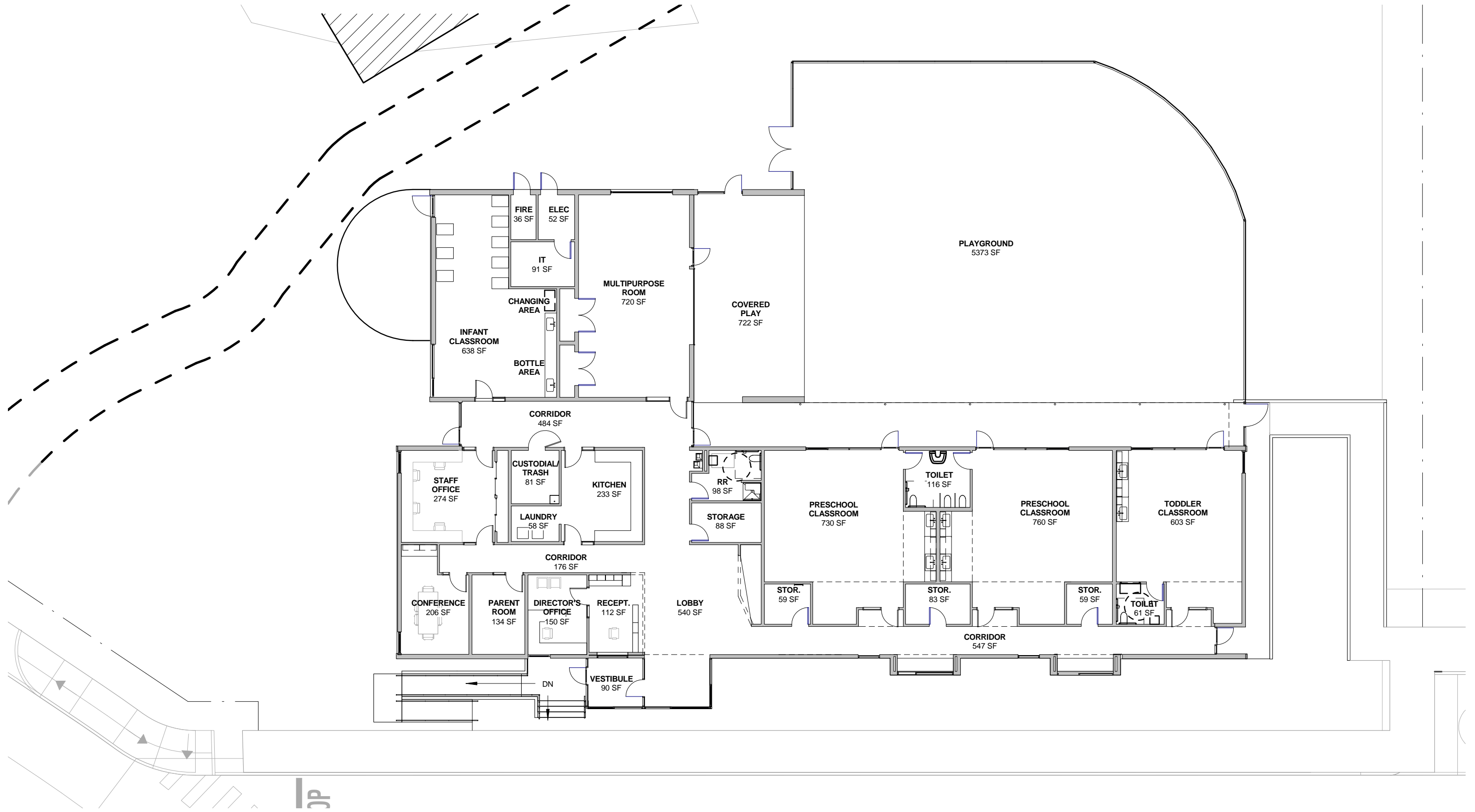
ROCK CREEK CAMPUS

Exterior Masterplan REVISED

Scale: 1/2" = 1'-0"
(except as noted)

AT-A-GLANCE

Pedestrian Wayfinding, Regulatory & Accessible



PCC ROCK CREEK CAMPUS CHILD
DEVELOPMENT CENTER

17705 NW SPRINGVILLE RD PORTLAND, OR 97229

05.22.17 | 15096

LEVEL 1 FLOOR PLAN

