

# PORTLAND COMMUNITY COLLEGE



THA ARCHITECTURE



Thanks to voters throughout the region, the Portland Community College's bond program was approved in November 2008. With increasing enrollment, programs and facilities are at capacity. The Bond will make it possible for the College to support expanded program growth, update equipment and technology, make health and safety upgrades and expand and renovate space to serve more students. With the bond program comes the opportunity to fulfill a vision of offering an accessible, quality college education to every member in the PCC District.

#### Cascade Campus (\$60,265,000)

- New Academic Building
- New Simulation Center for First Responders
- Renovate Student Center | Library Building
- Renovate Student Service Building
- Parking and Site Improvements
- Real Estate Acquisitions



**2008**

**Voters approve PCC Bond**

- \$374,000,000 total
- \$60,265,000 allocated to Cascade Campus



**Cascade Campus Plan  
Bond 2008**

**Guiding Principles  
February 2011**

Through the 2008 Bond Program, PCC Cascade will further the College mission of creating new educational opportunities for generations to come by building and renovating facilities that sustain our resources, delight our students, enhance our community, exceed the expectations of District citizens, and inspire generations to achieve their educational goals.

These guiding principles will be used to inform and direct the Campus Plan. They are a checkpoint to assure the needs of the campus and surrounding neighborhoods are met as the Bond Program progresses. They were derived from the PCC College Mission and in large part from a vision document that was drafted and vetted with faculty, staff, students and stakeholders from throughout the Cascade Campus surrounding community.

PCC Cascade pledges to:

**Foster collaborative thinking**

- Partner with organizations that can help achieve the vision, such as, public agencies, neighborhood associations, community businesses, and social-service organizations
- Reach out to college students, faculty and staff, residents, and businesses alike to garner the widest possible range of input
- Provide a transparent planning and design process with opportunities for input
- Value the input received

**Design facilities that inspire excellence in teaching and learning**

- Create a variety of learning spaces that are both beautiful and functional
- Provide a sufficient number of classrooms to meet campus need
- Support collaboration, both in and outside of classrooms
- Develop spaces that can be multi-purpose, flexible, and adaptable
- View any space as a potential learning space by individuals or groups
- Provide a supportive and accessible environment for all
- Serve the needs of Cascade's diverse student body
- Provide access to appropriate technology that is both flexible and adaptable

- Find opportunities to integrate art

**Improve the sustainability and quality of the overall campus environment**

- Create an open, safe, and welcoming campus
- Strive to surpass PCC's Bond Program's goal of LEED Silver certification
- Find innovative and sustainable transportation and parking solutions
- Recognize long- and short-term cost effectiveness, durability, and maintenance, and operational efficiencies
- Improve the sustainable basis of campus operations
- Celebrate Cascade as a neighborhood amenity while respecting the residential surroundings
- Create external spaces that are inviting, well-lit, and safe at all times
- Utilize existing land resources efficiently while preserving flexibility for future campus needs

**Promote the uniqueness of the neighborhood's history, architecture, diverse culture, and urban location**

- Preserve and improve the commercial mixed-use corridors of both Killingsworth and Albina
- Create designated zones that retain active ground-floor use
- Encourage a diversity of uses in the neighborhood to increase safety to the campus and the community
- Recognize the existing street grid to maximize connectivity with the neighborhood

**Support the commercial vitality of the Albina/Killingsworth commercial district**

- Design new structures that interface with the neighborhood commercial corridors
- Seek opportunities to partner on neighborhood beautification and commerce efforts
- Incorporate gateways and other visual cues to identify the campus and community
- Make Cascade's presence in the neighborhood benefit those living and working in the districts that surround the campus

**2011**

**Guiding Principles finalized**

- Based on outreach and feedback from Campus and Neighborhood communities

Guiding Principles

## Cascade Campus Plan Bond 2008

### Guiding Principles February 2011

Through the 2008 Bond Program, PCC's Cascade will further the college mission of creating new educational opportunities for generations to come by building and renovating facilities that sustain our resources, delight our students, enhance our community, exceed the expectations of future citizens, and inspire generations to achieve their educational goals.

These guiding principles will be used to inform and direct the Campus Plan. They are a checkpoint to assure the needs of the campus and surrounding neighborhoods are met as the Bond Program progresses. They were derived from the PCC College Mission and a large call to action from the community, staff, and students.

#### PCC's Cascade changes to:

- Foster collaborative thinking
- Design facilities that inspire excellence in teaching and learning
- Improve the sustainability and quality of the overall campus environment
- Promote the uniqueness of the neighborhood's history, architecture, diverse culture, and urban location
- Support the commercial vitality of the Albina/Killingsworth commercial district

- Find opportunities to integrate art

#### Improve the sustainability and quality of the overall campus environment

- Create an open, safe, and welcoming campus
- Strive to surpass PCC's Bond Program's goal of LEED Silver certification
- Find innovative and sustainable transportation and parking solutions
- Recognize long- and short-term cost effectiveness, durability, and maintenance and operational efficiencies
- Improve the sustainable basis of campus operations
- Celebrate Cascade as a neighborhood amenity while respecting the residential surroundings
- Create external spaces that are inviting, well-lit, and safe at all times
- Utilize existing land resources efficiently while preserving flexibility for future campus needs

#### Promote the uniqueness of the neighborhood's history, architecture, diverse culture, and urban location

- Preserve and improve the commercial mixed-use corridors of both Killingsworth and Albina
- Encourage ground-floor use
- Encourage diverse uses in the neighborhood to increase vitality to the campus and the community
- Support existing uses and to increase connectivity with the neighborhood

#### Support the commercial vitality of the Albina/Killingsworth commercial district

- Support existing and future commercial corridors
- Seek opportunities to partner on neighborhood beautification and commerce efforts
- Incorporate gateways and other visual cues to identify the campus and community
- Make Cascade's presence in the neighborhood benefit those living and working in the districts that surround the campus

**2011**

**Guiding Principles finalized**

- Based on outreach and feedback from Campus and Neighborhood communities

Guiding Principles



Option A1



Option A2



Option A3



Option A4



Option B1



Option B2



Option B3



Option C1



Option C2



Option D1



Option E1

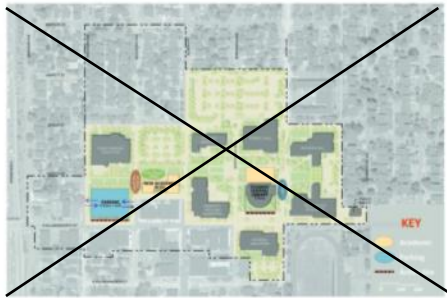


**2009-2011** Option E2

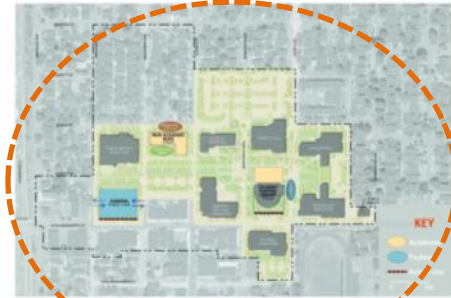
### Campus Planning

- Twelve Campus Plan options developed
- Positions of new Student Center, Academic Building & Parking Garage vary





Option A1



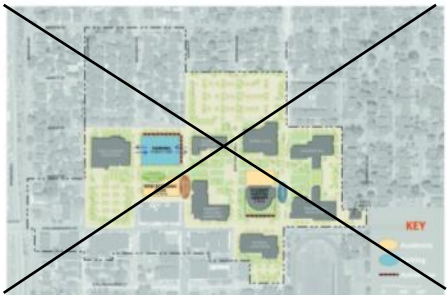
Option A2



Option A3



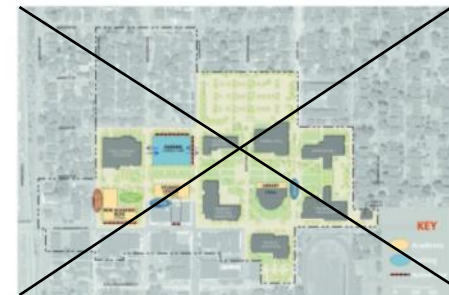
Option A4



Option B1



Option B2



Option B3



Option C1



Option C2



Option D1



Option E1



**2009-2011** Option E2

**Campus Planning**

- Two Options selected for detailed consideration
- Position of Student Center is the variable

ARCHITECTURE  
INC





## 2011

### Campus Planning

- Option A3 is preferred, based on extensive outreach
- Final Campus Plan includes underground parking garage in lieu of structured parking







organic. emerging. urban campus. connection to green. growing. **transforming.**



'we fix broken hives'  
**edgy.** not afraid to take risks.



**fun.** colorful. we take care of chicks. all colors. diversity.



internationalization initiative.



people working together. connection. oneness.



**earth/ universal theme.** PCC reaching out to the world/ world coming to PCC. internationalization.



sustainability.. connection to green. literal: campus  
**Oregon green.**

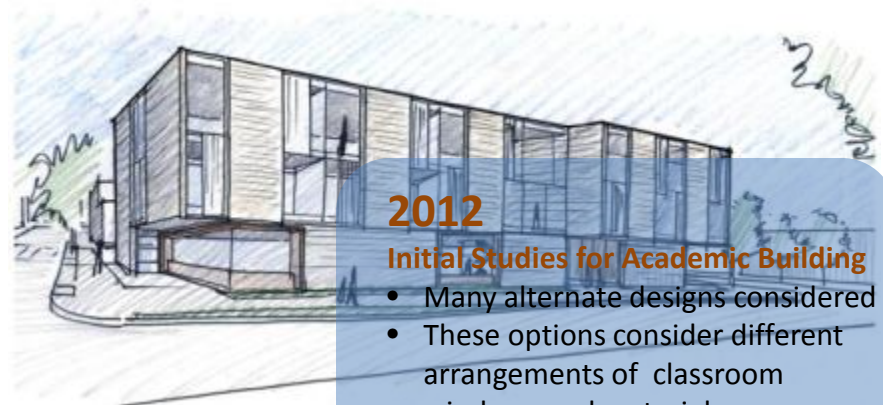


**peaceful place.** alone and shared community.

**2012**

**Building Committee participates in Visioning process**

- Images and words evoke powerful aspirations for the new building designs and programs



**2012**

### Initial Studies for Academic Building

- Many alternate designs considered
- These options consider different arrangements of classroom windows and materials



# Academic Building – South Elevation



**2012**

**Design Concepts**

- Sketch of Student Center, south elevation from Plaza

Design Concepts



**2012**

### Design Concepts

- First Floor Plan layout for Academic Building

Academic Building: First Floor Plan





**2012**

**Design Concepts**

- Second Floor Plan layout for Academic Building

Academic Building: Second Floor Plan



**2012**

**Design Concepts**

- Third Floor Plan layout for Academic Building

Academic Building: Third Floor Plan



# Student Center – North Elevation



**2012**

**Design Concepts**

- Sketch design: north elevation of Student Center from Mississippi

Design Concepts



**2012**

**Design Concepts**

- First Floor Plan layout for Student Center

Student Center: First Floor Plan



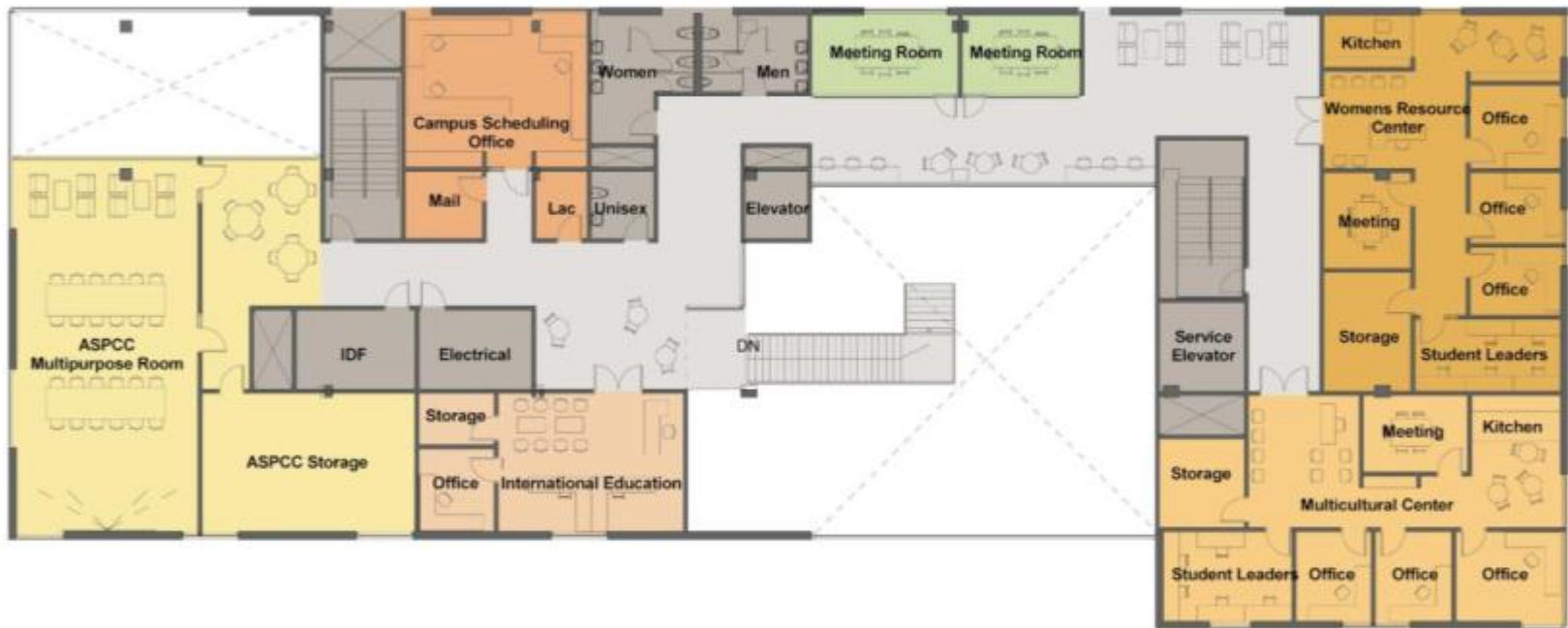


**2012**

**Design Concepts**

- Second Floor Plan layout for Student Center

Student Center: Second Floor Plan



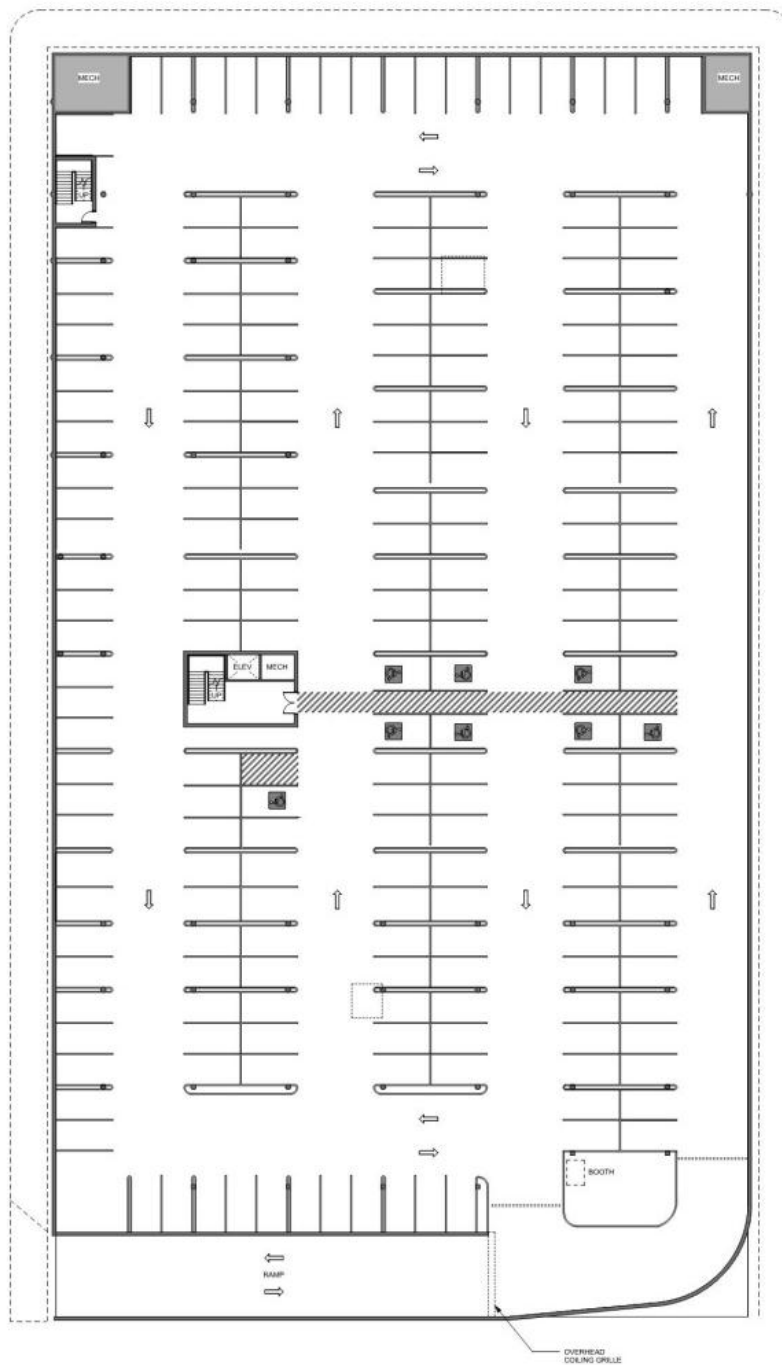
**2012**

### Design Concepts

- Third Floor Plan layout for Student Center

Student Center: Third Floor Plan





**2012**

### Design Concepts

- Layout of Parking Garage showing accessible pathways and vertical circulation

Parking



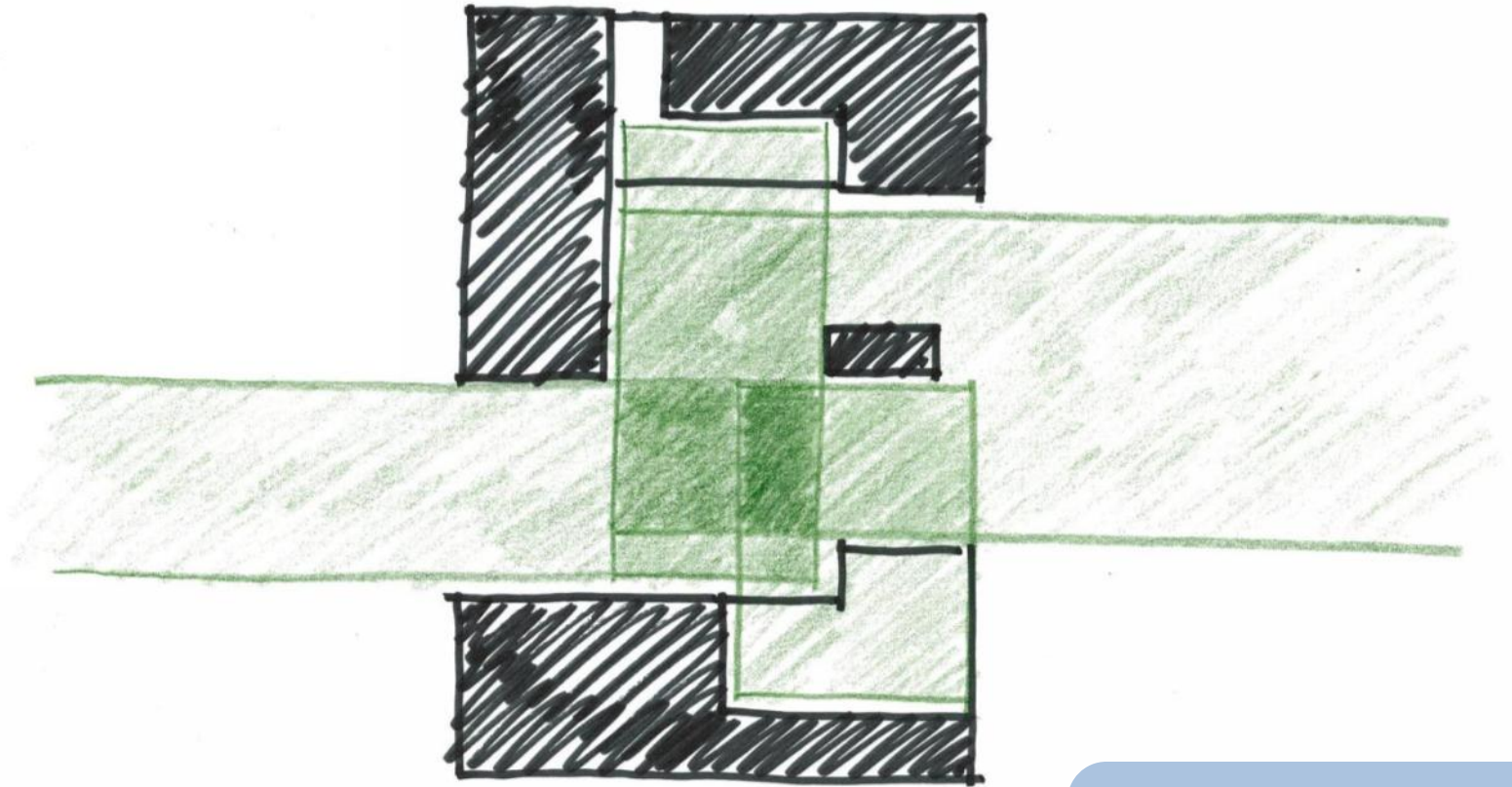
**2012**

**Campus Design Concepts**

- Overall view of campus open space and connections through new work

Future Connections





**2012**

**Site Design Concepts**

- Possible approach to open space design for Academic Building and Student Center

Complex Connection



Market



Orchard



Cascadia



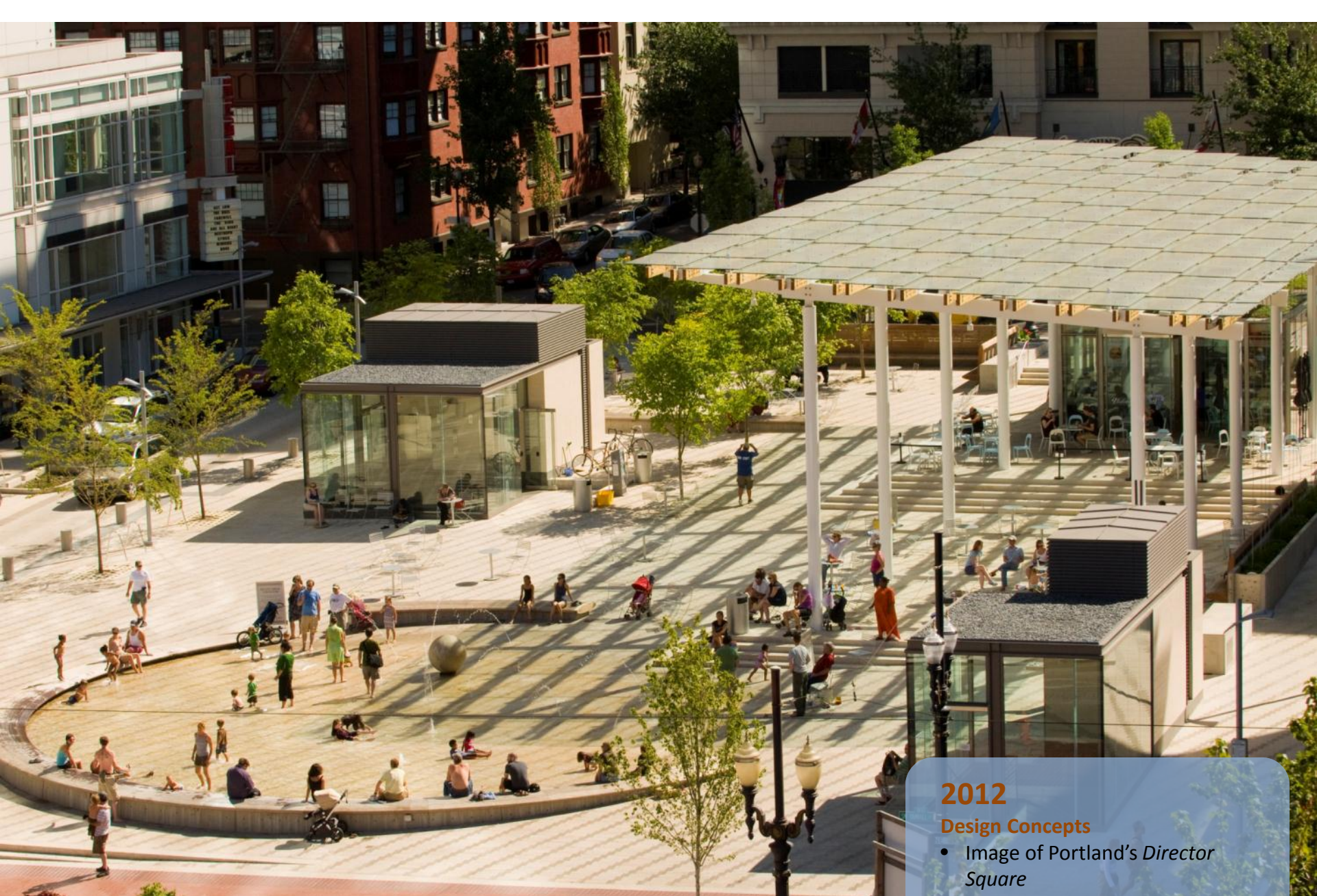
**2012**

**Landscape Design Concepts**

- Four options being considered for landscape design

Landscape Options





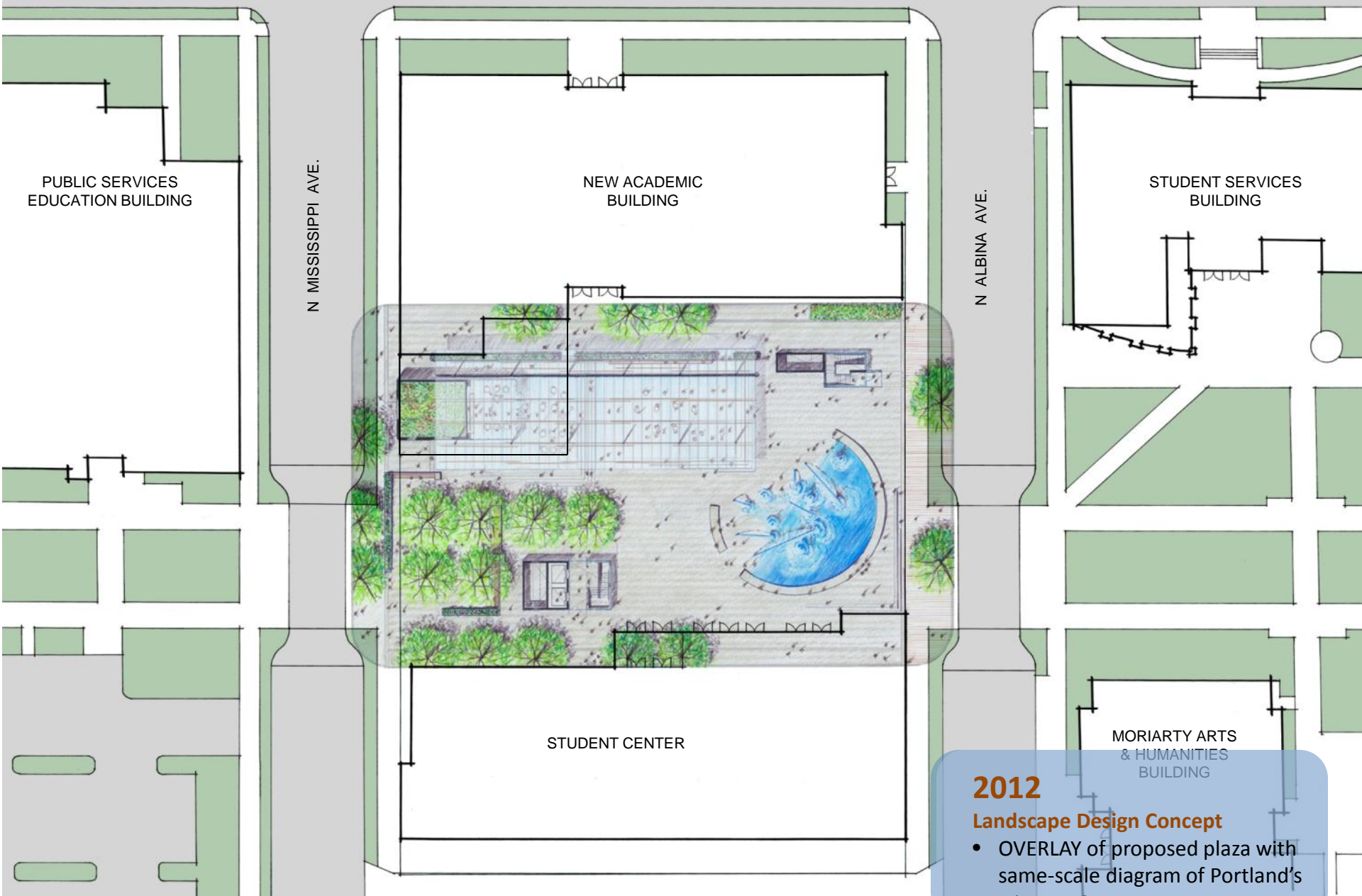
**2012**

**Design Concepts**

- Image of Portland's *Director Square*

Portland's Director Park – view looking south





PUBLIC SERVICES  
EDUCATION BUILDING

N MISSISSIPPI AVE.

NEW ACADEMIC  
BUILDING

N ALBINA AVE.

STUDENT SERVICES  
BUILDING

STUDENT CENTER

MORIARTY ARTS  
& HUMANITIES  
BUILDING

**2012**

**Landscape Design Concept**

- OVERLAY of proposed plaza with same-scale diagram of Portland's Director Square

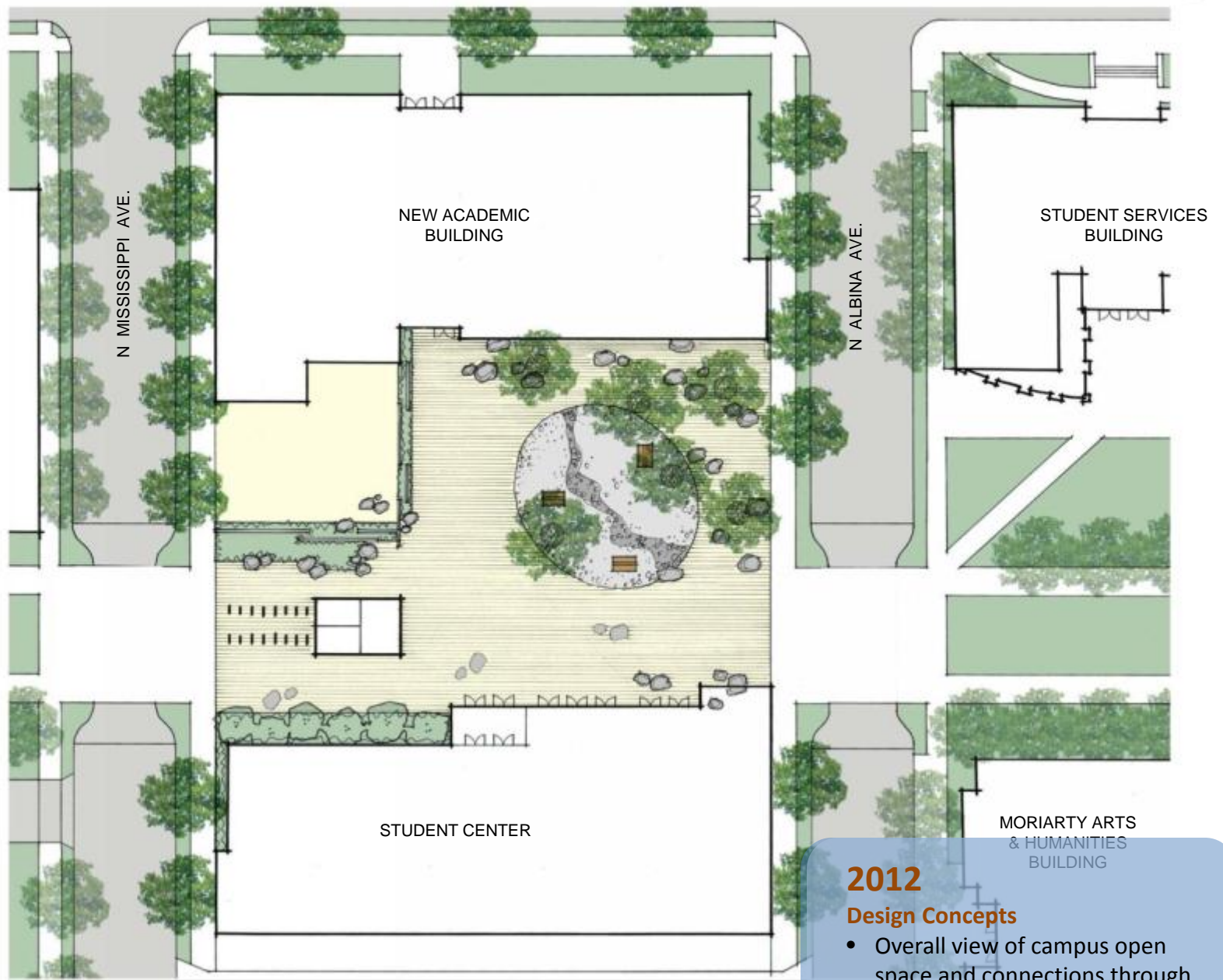


**2012**

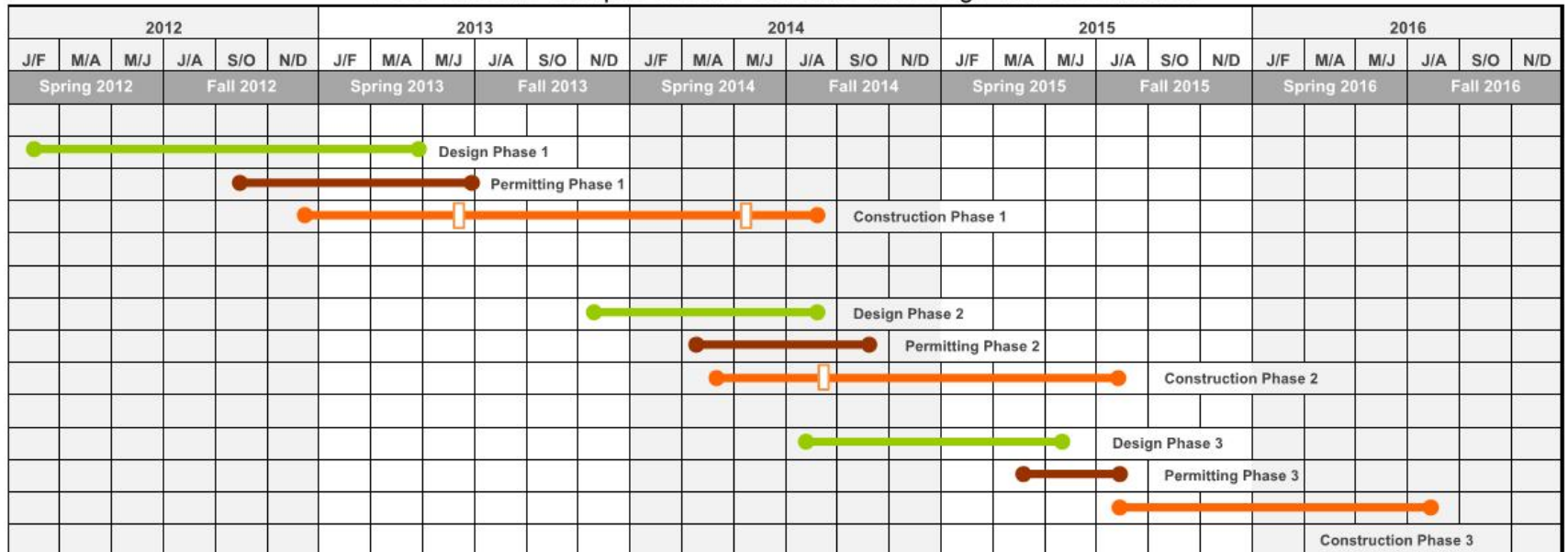
**Landscape Design Concepts**

- *Cascadia* concept – images of similar approaches





PCC Cascade Campus Phased Schedule for Design and Construction



**2012**

**Design & Construction Schedule**

- Please note that this schedule is subject to change

## QUESTIONS OR COMMENTS

Rebecca Ocken  
Bond Project Manager  
971-722-8463  
[rebecca.ocken@pcc.edu](mailto:rebecca.ocken@pcc.edu)