

Winter 2009

PCC

COMMUNITIES

College News
Community Education Schedule
Portland Community College

Enroll now!
Classes starting
November – January

Voters Say Yes!

Bond measure will increase
workforce training, reduce waiting lists

Spreading Opportunity

The Miller Foundation challenges
PCC to raise money for hundreds
of scholarships

INSIDE:
Community
Education
non-credit
class schedule

Pages 9-71

Inspiration

We're all about that.

Being part of PCC helped me realize things I could do in the community. I'm more community-oriented now, helping out wherever I can.

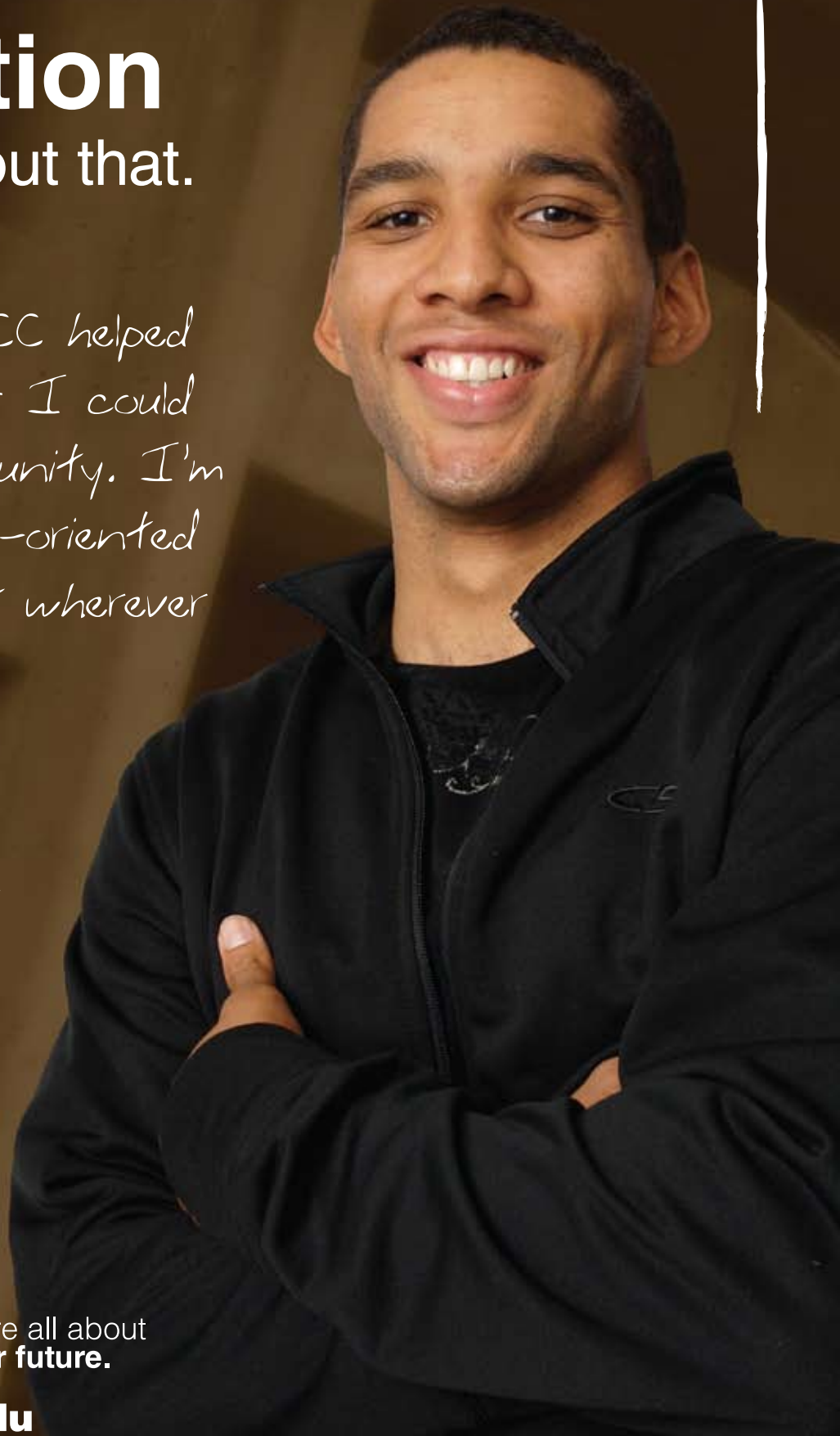
Austin

*Transfer Degree Student
Future Nurse and Educator*



We're all about
your future.

www.pcc.edu



Contents

PCC Communities Winter 2009

President's Column 4

Preston Pulliams thanks voters for their support of the PCC bond measure and talks about next steps for the college district.

Never Say Goodbye 5

Nearly 30 years after she graduated from PCC's Radiologic Technology Program, Mary Savage lends a hand to the college foundation and alumni.

Approved by Voters 6

The \$374 million voter-backed bond measure will help with the many challenges facing the college district: increased student enrollment and demand for workforce training.

Challenging the Status Quo 8

A grant from the Miller Foundation challenges PCC to raise more money for scholarships. And the real winners: financially strapped Oregonians who can't attend college because of the cost.

Calendar of Events, PCC Degree Programs and Credit Classes 72

Making Machinists Job Ready 73

Machine manufacturing offers well-paying jobs in an industry with workforce shortages. PCC steps in to train workers and fill an almost dry pipeline.

A Firm Foundation 74

Faculty member Spencer Hinkle teaches students the ins and outs of Building Construction Technology.

On the Links 77

Thanks to steadfast support from the construction industry, PCC scores big at the annual golf invitational, which benefits students who need help paying for college.

A Phenomenal Leader 78

Norma Jean Germond has been a friend to PCC for more than two decades. It's her commitment to students that sets her apart in the most distinguished way.

Expert Advice 79

PCC's Community Education offers classes around town and inside many local businesses. It's the perfect way to partner with industry leaders and give students hands-on instruction at cool shops.

On the Cover:



Tamara Moland, who works for the Bureau of Land Management in Portland, is active in PCC's Professional Enhancement Lunch and Learn series. She often takes classes on conflict resolution.

Community Education Schedule pages 9-71

Creative Arts

- 12 Fine Arts
- 18 Performing Arts
- 19 Digital and Photo Art
- 21 Art of Writing

Home & Garden

- 23 Food and Wine
- 25 Green Living
- 26 Horticulture
- 26 Hobbies and Crafts
- 28 Home Improvement
- 30 Pets
- 30 Welding and Metal Work

Language & Culture

- 31 Educational Services
- 32 Languages
- 37 Personal Paths
- 38 World View
- 40 Travel Tours

Professional Enhancement

- 43 Careers
- 46 Computer Skills
- 49 License Renewal and Continuing Education
- 50 Money Matters
- 51 Resume Boosters
- 53 Transitions

Recreation & Wellness

- 55 Dance
- 56 Health and Wellness
- 58 Mind-Body Fitness
- 60 Sports
- 62 Work Out
- 64 Registration Information

President

Dr. Preston Pulliams

Board of DirectorsDenise Frisbee
Jim Harper
Jaime Lim
Marilyn McGlasson
Bob Palmer
David Squire
Harold Williams**Director of College Advancement**

Kristin Watkins

Public Affairs Manager

Dana Haynes

Marketing Manager

Russell Banks

Assistant Marketing Manager

Jennifer Boehmer

Guest Designer

Sarah McClure

Magazine Staff**Editorial Coordinator**

Christina Holmes

ContributorsKate Chester
Dana Haynes
James Hill
Eloise Holland**Photography**Jerry Hart
James Hill
Jonathan House, Community
Newspapers Inc.
Rosemary Ragusa

"PCC Communities"
(USPS 001-624) Winter 2009,
Vol 22, No. 1,
is published quarterly by
Portland Community College,
12000 SW 49th Ave.,
Portland, OR, 97219
Periodicals postage paid
at Portland, Oregon.

POSTMASTER: Send address changes to
"PCC Communities"
P.O. Box 19000,
Portland, OR 97280-0990.

Visit the
Portland Community College
Web site at www.pcc.edu



This November the majority of voters in our district supported Portland Community College's bond measure. Thank you. We are deeply grateful to the voters for their confidence in the college and their understanding of the critical role PCC plays in our region's economy – especially during these difficult times.

PCC provides the education and training that leads to well-paying jobs, the kind of jobs that let you raise a family and buy a home. Nurses, welders, teachers and more: business and industry need them and with the passage of this bond measure, PCC will be better prepared to address these workforce shortages. To learn more about what the bond would do at locations throughout PCC's district, please see the article on page 6 of the magazine or go online at www.pcc.edu/bond.

Support for the measure could not have come at a better time. Many of our workforce training programs are at capacity and class waiting lists throughout the college remain high. Our enrollment this fall increased nearly 10 percent compared to last fall.

My vision is to be able to provide a quality college education to whoever wants it, but access to college is a three-legged stool. It takes adequate space and facilities to offer classes; funds for instruction, student services, and operating expenses; and scholarship support for students who cannot attend without financial help. The bond measure will shore up one of those legs by expanding classroom and laboratory space so that we can offer students more classes and programs.

Over the next few months we will have the opportunity to address the other two legs of the stool. After years of under-funding community colleges, lawmakers began the process of reinvesting in higher education in the 2007 Legislative session. We're heading into a new session in January and we're optimistic that the legislature, like the voters, will recognize how community colleges fuel economic development and will increase their investment in instructional and operating support for Oregon's colleges and universities.

We also have a chance to increase dramatically the number of student scholarships through an exciting challenge grant. If the PCC Foundation can raise an additional \$320,000 for scholarships over what it raised last year, the Miller Foundation will match it with another \$320,000. This would mean scholarships for hundreds more students who cannot afford to attend college. You can learn more on page 8.

On behalf of the entire college, thank you again for your support of the PCC bond measure. We will spend the money wisely and as promised.

Sincerely,

Preston Pulliams
District President

PCC Alumna **Mary**Savage

ByChristina A. Holmes

Mary Savage had one big break in her longtime career in radiology.

That break came when she was a 9-year-old at St. Ignatius Parish School in Southeast Portland when she broke her arm. So amazed that doctors could take pictures of a person's bone, she instantly decided to study radiology.

After graduating from St. Mary's Academy, she headed straight to Portland Community College because the Radiologic Technology Program was the best around. She graduated with an applied science degree.

"I picked berries every summer since I was a kid and it was that berry money that helped pay for college," she recalls.

She reconnected with PCC about 15 years ago when she was asked to serve on the Foundation Board. She's also currently chair of the Alumni Committee.

"Portland Community College touches the lives of such a vast population and helps so many people advance," she said. "Everywhere you go you see the contribution that the community college makes to the lives of the citizens."

Q. After earning a degree from PCC did you transfer to a four-year university?

A. Eventually I did. You know life gets in the way of continued college education and while I continued to take some classes I really got serious about a bachelor's degree in 1988. I finished my bachelor's degree at Concordia University in 1991 and then I went to Portland State University and received my MBA in June 1996.

Q. How did your time at PCC help with future jobs?

A. My time at PCC was the foundation to continued employment for my entire career. Long-term career advancement requires additional education, however, a health care degree assures there will always be employment opportunities. That has been true, for me, for 36 years.

Q. Do any of your PCC instructors stand out in your mind?

A. Yes, there are several. The gentleman who was instrumental in beginning the Radiologic Technology Program was Fred Reichensberger. He passed away several years ago. The instructor who made sure we all developed as professional radiologic technologists was a very talented woman named Norine Dietrich. I couldn't forget Ann Erlich and Betty Palmer. These women were the heart and soul of the program and hundreds of radiologic technologists owe their success to the things these women taught us.

Q. Tell us about your current job.

A. I'm the Regional Director of Diagnostic Imaging for Providence Health System in the Portland Service Area. I'm responsible for the diagnostic imaging services at the three acute care hospitals in Portland. All of us who work for Providence Health System are privileged to play a role in the work of an organization that contributes so much to the citizens of Portland and my education at PCC made that possible for me.

Q. Your ties to PCC have remained strong. Why do you stay involved with the college?

A. I believe that each of us has a responsibility to assure that our industry, whichever industry we work in, continues to be able to recruit and retain the highest level of skilled individuals. After all, they are the people who will carry on the business or care for us some day.

Q. What role do you think PCC plays in developing and strengthening the local economy?

A. PCC plays a vital role. The more we can educate people in the community the better they will be able to get jobs and support the community. ■





VOTERS SAY YES! PCC SAYS THANK YOU

Bond measure will enable the college to serve more students, offer more workforce training

By Dana Haynes and Christina A. Holmes

Voters in November said “yes” to the Portland Community College \$374 million bond measure. Next up: construction and renovation plans at all three primary campuses, the Southeast Center, new venues in Washington County and a building in Newberg.

“We are grateful to constituents of the college district,” said President Preston Pulliams. “During these harsh economic times we know voters thought cautiously about their own finances when considering this measure. We are thankful they have trusted us with this decision and we will spend each dollar wisely and efficiently.”

Randy McEwen, college vice president, predicted that it will take two months of discussions to develop key, strategic ideas on the structure and approach to the building process. He expects to have a plan for selling the bonds by this spring, so-called “requests for proposals” for architects and construction firms around July, hiring by the start of the school year next September.

College leaders expect construction of new buildings to begin in 2010 but renovations to bring instructional facilities up to industry standards and to make facilities more energy efficient could begin sooner. The majority of bond program projects are expected to be completed by 2016.

Among the programs to be expanded or offered at new sites are nursing, welding, emergency first-responders and teacher education. Careers such as these allow people to raise a family, buy a home and support the local economy.

“We are thankful and deeply appreciative that voters trust us to continue educating and training the workforce of tomorrow,” said Denise Frisbee.

“The passage of the PCC bond measure is a key cornerstone in our region’s future economic health,” said Sandra McDonough, president and chief executive officer of the Portland Business Alliance. “By investing in PCC, we are ensuring that students have opportunities to succeed and that businesses have a skilled and trained workforce.”

The bond measure allows all three campuses — Cascade, Rock Creek and Sylvania — to gain new classrooms and

labs, reducing the long waiting lists that hamper student success. Classrooms also will gain new, updated technology.

Approval of the bond also gives the college the go-ahead to make investments in the Southeast Center, as well as the Willow Creek training facility, to be built on the Max transit line in Washington County. A new academic building and additional career training opportunities are slated for Newberg and expanded career opportunities will become a reality in Sherwood.

“The college plays an integral role in this community by preparing everyone from high school graduates to those seeking a new career in the changing workforce,” said Denise Frisbee, chair of the PCC Board of Directors. “We are thankful and deeply appreciative that voters trust us to continue educating and training the workforce of tomorrow.”

The added classrooms and labs — along with more distance learning and child care facilities — are all part of the college’s philosophy of providing access to education for everyone who wants in. “This will help us reduce waiting lists for classes and reduce the workforce shortages that plague the region,” Pulliams said. “The voters saw the bond measure as an economic stimulus for the region. And it is.” ■



“We are grateful to constituents of the college district. We are thankful they have trusted us with this decision and we will spend each dollar wisely and efficiently.”

—Preston Pulliams, PCC president

What the bond measure will finance

Projects at the main locations include:

Cascade Campus

705 N. Killingsworth St.

- Add a simulation lab for first responder and allied health students
- Add and expand instruction for careers in pre-kindergarten through high school education
- Add classrooms
- Add a child care facility for students
- Increase parking
- Increase capacity of library and other student services

Rock Creek Campus

17705 NW Springville Rd.

- Add space to offer nursing and allied health care programs
- Increase classroom space
- Renovate welding, auto collision repair, diesel repair and building construction technology facilities
- Expand child care facility for students
- Modernize arts facilities
- Increase capacity of student services

Southeast Center

2305 SE 82nd Ave.

- Add science labs
- Add career training facilities for welding, construction and/or electronic engineering technology programs
- Add library and tutoring services space
- Add classrooms
- Add a child care facility for students

Sylvania Campus

12000 SW 49th Ave.

- Expand dental programs
- Upgrade space to add renewable energy technician training
- Increase classroom space
- Increase capacity of student services space
- Expand child care facility for students
- Upgrade automotive, machine manufacturing, radiography, and photography facilities

Other projects include the Willow Creek training center on the Max transit line, and facilities in Newberg and Sherwood.



Pictured above are some of the students who received PCC Foundation scholarships in 2008.

STEPPING UP FOR STUDENTS

The Miller Foundation challenges PCC to increase access to higher education

By Dana Haynes and Eloise Holland

Each year, hundreds of PCC students receive scholarships through the Portland Community College Foundation, making the difference between going to college and not going to college; of getting that well-paying job or earning minimum wage.

Often, these scholarships are more than just financial support. Lezlie Bugg found her calling while volunteering for Tualatin Valley Gleaners as a requirement of the Service to Community scholarship through the PCC Foundation.

"It's been wonderful," said Bugg of working with the food assistance program. "My work with the Gleaners has confirmed that this is a population I want to work with." Bugg was recently accepted into PCC's Sign Language Interpretation Program and is excited about pursuing a career in the nonprofit field.

But what about the hundreds of students who apply and get turned away, because there's more demand than there is money in the college foundation coffers?

The James F. and Marion L. Miller Foundation has a little something to say about that.

The Miller Foundation has issued a challenge grant that will match up to \$320,000 for every scholarship dollar raised over and above the amount raised last year by the

PCC Foundation. In other words, if PCC can raise \$320,000 over last year's benchmark of \$371,000 by the end of March 2009, it would result in more than \$1 million raised and additional scholarships for hundreds of the most financially strapped Oregonians.

"This is visionary, daring," said Rick Zurow, executive director of the Portland Community College Foundation. "To the best of our knowledge, this is the largest investment for scholarships by a private foundation in the history of Oregon's community colleges."

PCC is one of 17 Oregon community colleges included in the \$1.5 million challenge grant from the Miller Foundation.

"Frequently, the opportunity to attend a community college is the pathway to a living wage and a secure family," said Chuck Putney, president of the Miller Foundation board. "We feel community colleges are a vital part of Oregon's educational system and economy."

Scholarship recipient Erica Bailey agrees. "These scholarships have a radiating impact on the community," said Bailey, who is raising a daughter while studying to be a nurse practitioner. "In our future careers, we will give back to our communities in a variety of ways as we become nurses, teachers, social workers, service professionals and so much more."

Zurow said 850 students applied for scholarships in 2007-08 and the PCC Foundation had funds for only 300 of them. If the college meets the Miller Foundation challenge, more students like Lezlie Bugg and Erica Bailey would have the chance to receive an education.

"We are providing scholarships for students who never dreamed they could afford to go to college," said Preston Pulliams, president of PCC. "But we also turn many students away. The Miller Foundation challenge would bring us close to the goal of serving every student who applies for a grant. This is a fundamental step toward our long-range goal of access for everyone who wants in." ■



Chuck Putney,
President of the Miller Foundation Board

To give, go to www.pcc.edu/foundation.
Or call (503) 977-4382.





IRON-CLAD CAREER ADVICE

Machine manufacturing offers well-paying jobs but faces vast workforce shortages

By Kate Chester

It was a reality check at a recent meeting of industrial technology manufacturers in Newberg.

Alvin Elbert, owner and president of ARE Manufacturing Inc. – a local contract machine shop that produces precision parts for dental, hydraulic and high tech industries – said he trains his machinists on-site in about five years. While he'd like to hire machinists with associate's degrees, he can't find them. And once trained, he hopes they won't be hired elsewhere.

Scott Simmons, vice president of manufacturing at Climax Portable Machine Tools, also based in Newberg, commented that he recently hired two machinists at a conference in San Diego because he couldn't find local workers with the skills he needs. "We have an industry demand for trained machinists – the pipeline is dry,"

said Pat Kraft, department chair of PCC's Machine Manufacturing Technology Program based at the Sylvania Campus. "PCC's mission is to prepare its students with skills that enable them to find fulfilling work that offers livable wages. Our program is in a prime position to do this."

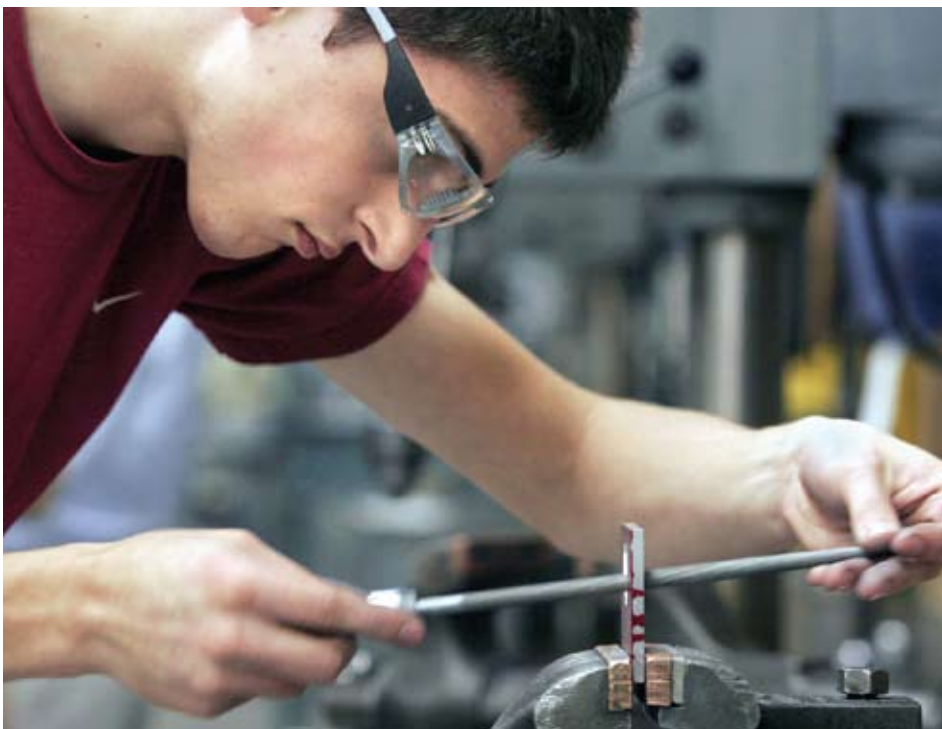
The program is meeting industry needs by educating and training high-functioning, entry-level machinists. It provides students with fundamental machining skills and concepts by way of multimedia, written materials, video, hands-on laboratories and interaction with instructors. The program offers a self-paced learning format called "Open Entry Open Exit." All classes are modular by design – there are no "regular" classes. Rather, students complete courses and assigned work on schedules that suit them. Students register at any time. PCC also continues to forge

partnerships in an effort to monitor the pulse of the industry and to create learning opportunities for machine manufacturing students.

"We have an industry demand for trained machinists — the pipeline is dry," said Pat Kraft.

The college is a charter member of Manufacturing 21, a statewide consortium of industry partners dedicated to refueling the pipeline of machinists through training and better marketing of a line of work seen as "non-glamorous" yet one that offers stable employment opportunities and a multitude of specialties within the field. Wages in the Portland metropolitan area vary and general machinists and computer numerically controlled machine tool operators can earn \$11 to \$27 per hour. Tool and die makers make \$18 to \$29 per hour.

Last summer, PCC offered a robotics camp for high school students who experimented with band saws, drill presses, lathes and milling machines to build parts for robots they'd created. PCC is in discussions with the Newberg School District to help broaden and deepen the high school's industrial technology program. One pilot project in the works calls for a mobile machine technology cart to be taken to middle schools to inform younger students about the field. And with a high number of industry manufacturers located in Newberg – roughly a dozen – PCC hopes to develop more teaching opportunities with them. ■



Trevor Burtzos, a Catlin Gabel student, checks the smoothness of a hole he created in a metal guide, during a robotics camp at PCC Sylvania.

To learn more about the program, go online to www.pcc.edu/machine.



FROM THE GROUND UP

Veteran faculty member Spencer Hinkle lays the foundation for many students focused on construction careers



(from left to right) Students Steve Griffin, Nikki Jeffers, Anne Frische and Duc Ho review blueprints with Spencer Hinkle.

By Christina Holmes

To hear it from his students, Spencer Hinkle is one of the reasons many got involved with the Building Construction Technology program. His thoughtfulness, his enthusiasm and most of all his passion for building.

As a Rock Creek Campus faculty member nearing the 30-year mark, Hinkle has educated and trained thousands of students intent on learning the construction trade. "As a career changer and someone who has taken years of college level

courses at a variety of schools, I would say that Spencer has definitely been one of the most, if not the most, influential instructor I have ever had," said student Nikki Jeffers, who works at The Home Depot as a kitchen and bath specialist

while she goes to school. "Not only does he have expertise in the subjects he teaches, he is an advocate for his students and for the BCT programs."

The mild-mannered Hinkle, who takes time to listen to and help just about anyone in need, is energized by his students and their desire to learn.

"When I go into a classroom it's a real joy and all my problems go away. I get to talk about a subject I know very well to people who want to know all about it," he said. "I take my job as seriously today as I did the first day I started teaching."

And his generosity doesn't stop with Rock Creek students. Recently he's dedicated a large part of his time outside of class to a New Orleans family still reeling from

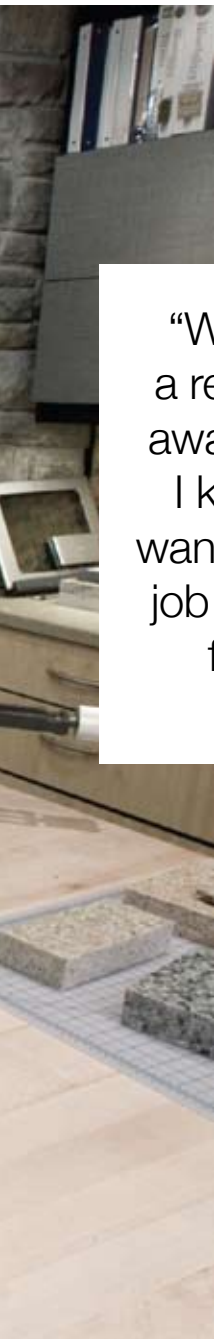
Hurricane Katrina three years ago. He met the family of six quite by chance during a visit to the area earlier this year. The family continues to live in a trailer given to them by the Federal Emergency Management Agency. Hinkle, 61, wants to build a home for the family.

"If you go to New Orleans and work and meet these people you just have to go back because you can't leave it alone. There are still 130,000 vacant homes in the city. The sight of that many devastated homes just knocks you out," said Hinkle, who's already helped rebuild one home for a New Orleans resident.

This academic year Hinkle's students will focus on sustainable construction practices and they will research methods for building houses in flood zones and probable hurricane paths. His willingness to engage his students with the community — locally and nationally — has caught the attention of various organizations and in the last two years Hinkle has received well-deserved accolades for his work.

Last year the Association of Community College Trustees named him the Pacific Region Faculty Award winner, one of five honorees across the nation. He also received the PCC Faculty/Staff Excellence Award and the Educator of the Year Award from the Oregon Building Congress. In 2006 he was honored with the Gordon Galbraith Award, given to Rock Creek faculty and staff for outstanding service to students and the community.

"He has a good nature to him and he is very likable. He doesn't prejudge anyone and that makes him a great teacher," said Ken Madden of Madden Industrial Craftsmen Inc., an industrial staffing company with offices in Portland, Vancouver and Seattle. Adds Madden, who sits on the PCC Foundation Board and the BCT advisory committee: "He brings a lot of knowledge about the building industry to his classes."



"When I go into a classroom it's a real joy and all my problems go away. I get to talk about a subject I know very well to people who want to know all about it. I take my job as seriously today as I did the first day I started teaching."

- Spencer Hinkle

Born and raised in Florida, Hinkle earned a degree in geography from the University of South Florida. He moved to Portland with his wife, Susan, in the late 1970s and opened a cabinet making shop, Hinkle & Sons Fine Woodworking. He also started teaching part time at PCC in 1980.

By 1994 the shop closed and by then Hinkle was a full-time instructor. He is now chair of the department.

BCT students span the spectrum — high school grads, career changers and professionals looking to upgrade or retrain. The program offers a certificate and an associate's degree in BCT and an associate's degree in BCT: Design/Build Remodeling. New to the program is an associate's degree in BCT: Construction Management, which is gaining popularity. Concerned about his current students

and also future ones, Hinkle spent the last three years as the principal investigator for a \$700,000-plus National Science Foundation grant, "Framing Student Success," which strengthened math, science and writing skills among high school students through hands-on instruction in construction technology.

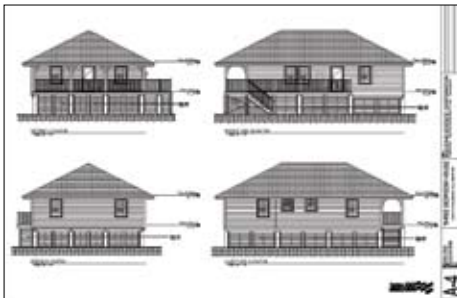
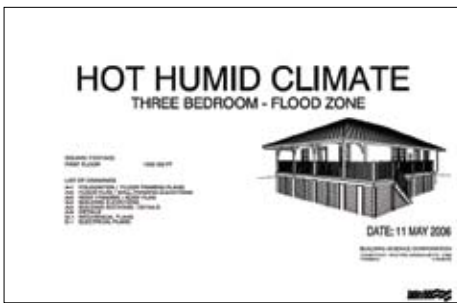
He's working on another National Science Foundation grant but this one has him and other instructors working in the field to learn more about green practices. His "apprenticeship" will be in a cabinet shop.

"Spencer is a great teacher who takes his job and the success of his students seriously," said Jeffers, who left the medical field and is now working on degrees in Building Construction Technology and Design Build Remodel as well as an Interior Design degree and

Kitchen and Bath Design certificate. "He's also a nice, down-to-earth guy with an awesome sense of humor." Away from the classroom, Hinkle enjoys spending time with his wife, two sons and two grandchildren. He's a fly fisherman and he's reacquainting himself with a jazz quintet where, for the first time in 30 years, he's playing drums. ■

To see a video about the house Hinkle and PCC students are helping to build in New Orleans, go to www.citiesrebuildingcities.com.

For more information about the Building Construction Technology Program, visit www.pcc.edu/programs/bldg-construction.



BSC © Building Science Corporation. Reprinted with permission.

(Left) Blueprints for the house Spencer and his students are building for the Brown family in New Orleans.



TRADES TEE UP FOR PCC STUDENTS

Industry bands together to fund student scholarships

ByChristina A. Holmes

Each fall contractors and professionals from the construction trades find themselves on the links to benefit PCC.

Proceeds from the annual Portland Community College Foundation Golf Invitational – the Foundation’s largest single fundraising event – funds scholarships for students throughout PCC, including students in the Building Construction Technology Program.

In 2008, the event netted over \$70,000 and the money went toward student scholarships, an endowment scholarship fund for construction students, program enhancements and equipment. In addition, \$5,000 was earmarked to help promote sustainability practices in the construction technology curriculum.

Such an event wouldn’t be possible without dedicated partners in the construction industry and it was Walsh Construction, Emerick Construction, Howard S. Wright Constructors and Skanska who pulled together as co-sponsors and helped launch the first golf invitational in 2004.

“My view of the work of the community college system is that it’s a vitally important link between high school and college,” said Bob Walsh, president of Walsh Construction, the Portland-based commercial and residential construction company with about 600 employees. “The college is also a good returning step for those already in the work place who need to improve their skills and marketability.”

The founding sponsors are among the first to point out PCC’s pivotal role in workforce development as the college responds to industry needs by training and educating future workers.

“All of these companies involved in the golf tournament have a passion for construction and the construction program at PCC,” said David Osborne, senior vice president for Skanska, a global construction firm with a 450-employee office in Beaverton. “We took a look at what the program needed to grow and then we responded.”

In addition to the founding sponsors, Metropolitan Land Group was this year’s presenting sponsor. ■



Participants in the Foundation Invitational included (from left) Harold Hartfeil, Dave Martin, Chandler Young and Jim Lampus.

Founding Sponsors of the Golf Invitational

Bob Walsh, President
Walsh Construction

Dave Osborne, Senior Vice President
Skanska

Larry Sitz, President
Emerick Construction

Dale Pellow, Chief Operating Officer
Howard S. Wright Constructors



Distinguished In Every Way

Norma Jean and Henry Germond are honored for their service to the college

By James G. Hill

Norma Jean Germond is distinguished in many ways. From her thoughtfulness to her tenacity, she's known for getting things done on behalf of the community college and especially students.

Portland Community College added one more feather to her cap by bestowing on her and husband, Henry, the 2008 Distinguished Patron Award. PCC's Board of Directors established the award last year to recognize extraordinary levels of service to the college. The first recipients were board member Doreen Margolin, who passed away in 2007, and Dick Helzer, former PCC faculty member and his wife Sharon. Both passed away in 2006.

"We are extremely honored and a little bit humbled," Germond said of the award. "To include Henry, who has done a lot for the college as well, was very wonderful. It meant a lot to me and him."

The Germonds recently established an endowed scholarship with the PCC Foundation that will provide tuition support for students taking developmental education courses.

Norma Jean Germond graduated magna cum laude from Montclair State Teachers

College (N.J.) with a bachelor's degree in English and later worked as an instructor in the Parma, Ohio, and Long Branch, N.J., school systems.

"The Foundation is extremely important. It's my wish that every low-income student receive a scholarship," said Germond.

Elected to the college board in 1985, Norma Jean Germond took active roles in the recruitment and selection of three community college presidents as well as the passage of a permanent tax base and successful capital construction bonds. She left the board in 2005.

She also served on the board of directors of the Association of Community College Trustees and the Oregon Community College Association. In recognition of her leadership and service to community colleges, OCCA honored her with the Howard Cherry Outstanding Advocate Award.

"Norma Jean is a phenomenal lady," said Harold Williams, PCC board vice chairman and a longtime board member. "She is very

positive, very direct and tenacious in everything she does. She is committed, warm-hearted and cares about people in general and students in particular. And she is really committed to PCC. I have great respect for her."

Germond now serves on the PCC Foundation Board and she plays a lead role in awarding scholarships to more than 300 students each year.

"The Foundation is extremely important," she said. "It's my wish that every low-income student receive a scholarship. It's critical to the community. Community colleges are the lifeblood of the community. I have a passion for this."

Anyone who has worked with her has seen those traits and knows how valuable she is to PCC.

"She has been a powerful advocate for community colleges with state and federal lawmakers," said PCC President Preston Pulliams. "Norma Jean has given many years of passionate service to the college and has been a voice to the critical role community colleges play across the nation. Together with her husband, Henry, she has also made the dream of a college education a reality for many PCC students to come." ■

LOCAL EXPERTS, ENDLESS OPPORTUNITIES

Community Education classes offer access to local experts around town

By Eloise Holland

Amber Schulz has firsthand knowledge that taking a class through a Community Education small business partner can change the way people see the world.

"I was really nervous because I'd never done anything with glass," said Schulz, who started with a fusing class at Aquila Glass School after receiving the Glass Arts Scholarship from the PCC Foundation.

A few months and a class at Rose's Glassworks later, Schultz has found her niche with stained glass and is even thinking of putting a glass studio in her apartment. "You can do so much with it," she said. "I really like how in-depth the medium is."

Aquila Glass and Rose's Glassworks are just two of the scores of small businesses that collaborate with Community Education to offer classes in everything from wine appreciation to home remodeling to solar energy installation.

"One of Community Education's mission statements is to 'Partner with the community to provide accessible, innovative and diverse educational experiences,'" said Tonya Booker, director of Community Education. "Partnerships with small businesses help us achieve this mission; not only by meeting the learning needs of the community we serve, but also by contributing to economic development through the promotion of the unique products and services provided by local businesses."

About 3,200 students each year take classes through small, local businesses like Ryerson Hardwood Floors, Art Media, Yoga Bhoga Yoga Project, Vino Vixens, Aquila Glass, the Community Cycling Center and Mr. Solar Sun, to name a few.

Ryerson Hardwood Floors, for example, has collaborated with Community Education for the last 14 years to offer an installation class and a sand-and-finish class. For students,

one of the main advantages of the classes is the opportunity to practice with unfamiliar and heavy equipment.

"It makes a huge difference when people get some hands-on experience before they start their project," said Bob Richardson, who works at Ryerson and helps teach the classes. "They're going to have a lot better experience." Students are not the only ones benefiting from these partnerships.

Richardson estimates that half of the do-it-yourself branch of the 60-year-old business comes from students who have taken a Community Education class.

"It drives our rental business," said Richardson.

Art Media, a locally owned art supply store, has been a Community Education partner for more than 13 years.

"We really appreciate having the connection," said Art Media founding partner Gail Vines, who shares the business with Kathleen Christian and David Mosher. "It's great being in the catalog. It brings more awareness of Art Media to the students who take classes."

They offer three acrylic classes each term, teaming with PCC for the workshop space and with Golden Acrylics for materials and expert teacher, Corrine Loomis-Dietz.

These partnerships keep the cost affordable to Community Education students.

But Vines believes that the classes are more than just a good deal. They also offer important encouragement to student artists. "If the students understand how to use their paint, they'll be more interested in continuing," she said. ■

A list of arts classes through Community Education begins on page 9 of the schedule.



About 3,200 students each year take classes through small, local businesses like Ryerson Hardwood Floors (below), Art Media (above), Yoga Bhoga Yoga Project, Vino Vixens, Aquila Glass (middle) the Community Cycling Center and Mr. Solar Sun, to name a few.



K103 fm

Project: YOU

with PCC Community Education

My Project:

Name: Dana Jeffries

Occupation: K103 FM Morning Show Personality

My Project: Try out a healthy new menu to share with my listeners.

Class I Took: Luscious, Low-fat, Lightning-quick Meals - and I took it online!

And Now: Delicious recipes to post on my blog, like Greek Pizza and Very Cherry Cake. Plus, the quick meals are perfect for a mom who works in radio!



We're all about your future.

Community Education

www.pcc.edu/communityed

Make YOU the project!

If you can dream it, Community Education's hundreds of classes can help you achieve it. Go online and get started on your own Project:YOU this Winter.



P.O. Box 19000 Portland, Oregon 97280-0990
MC516

Residential Customer